

# SPACE FOR LEASE

## Palm Plaza

811 SE 8th Avenue, Deerfield Beach, FL 33441

Coastal Deerfield Beach Area  
Located just West of US1

### PRIME RETAIL/ OFFICE LOCATION

- 640 SF Fully Built Out First Floor End Cap Available
- Extensively Renovated Units
- Exceptional Design and Property Maintenance
- Abundant Parking
- Competitive Lease Rates
- High Traffic Shopping Area
- Located just off US1



Licensed Real Estate Broker

954.491.2281 PH

954.491.2298 FX

[www.negproperty.com](http://www.negproperty.com)

[harry@negproperty.com](mailto:harry@negproperty.com)

**HARRY CHASKALSON**

Licensed Sales Associate

The information above has been obtained from sources believed reliable. While we do not doubt its accuracy, we have not verified it and make no guarantee, warranty, or representation about it. It is your responsibility to confirm its accuracy and completeness. Any projections, opinions, assumptions, or estimates used are for examples only and do not represent the current or future performance of the property.

# SPACE FOR LEASE

## Palm Plaza

811 SE 8th Avenue Deerfield Beach, FL 33441

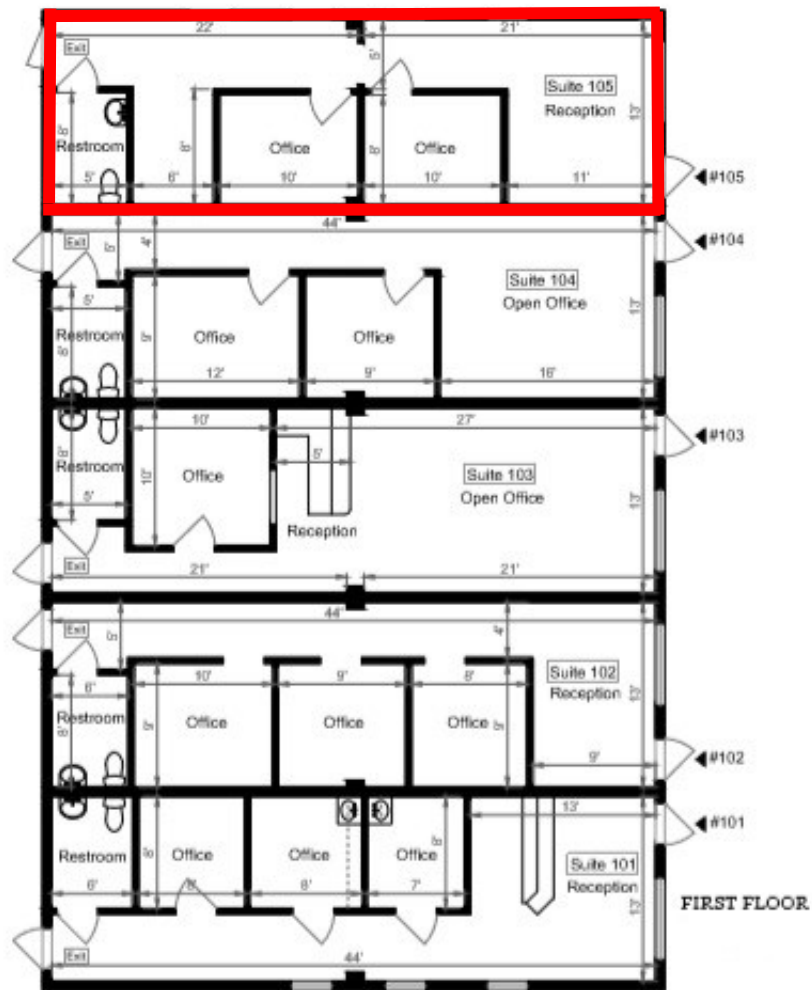
Estimated Total Square Footage: 6,310 SQ FT

Calculated from outside face of exterior walls and center line of dividing walls.

Each Individual Suite: 640 SQ FT

### 811 SE 8TH AVENUE

DEERFIELD BEACH, FL 33441



Rendering by Floor Plan Visuals.  
All measurements are approximate. While deemed reliable, no information  
on these floor plans should be relied upon without independent verification.

Presented by Harry Chaskalson, N.E.G. Property Services, Inc.  
Office: 954-491-2281 Cell: 954-270-6012  
Email: [harry@negproperty.com](mailto:harry@negproperty.com)