

**\$22.00 PSF
START RATE
FULL SERVICE**

PEAKVIEW V

1241 W MINERAL AVE, LITTLETON, CO

5,020 SF -
35,252 SF

OFFICE OR MEDICAL

For leasing information contact:

Matt Smith | 303.996.8460
msmith@premisescommercial.com

Michelle Gertzman | 720.743.6399
mgertzman@premisescommercial.com

PREMISES
PREMISES COMMERCIAL REAL ESTATE, LLC

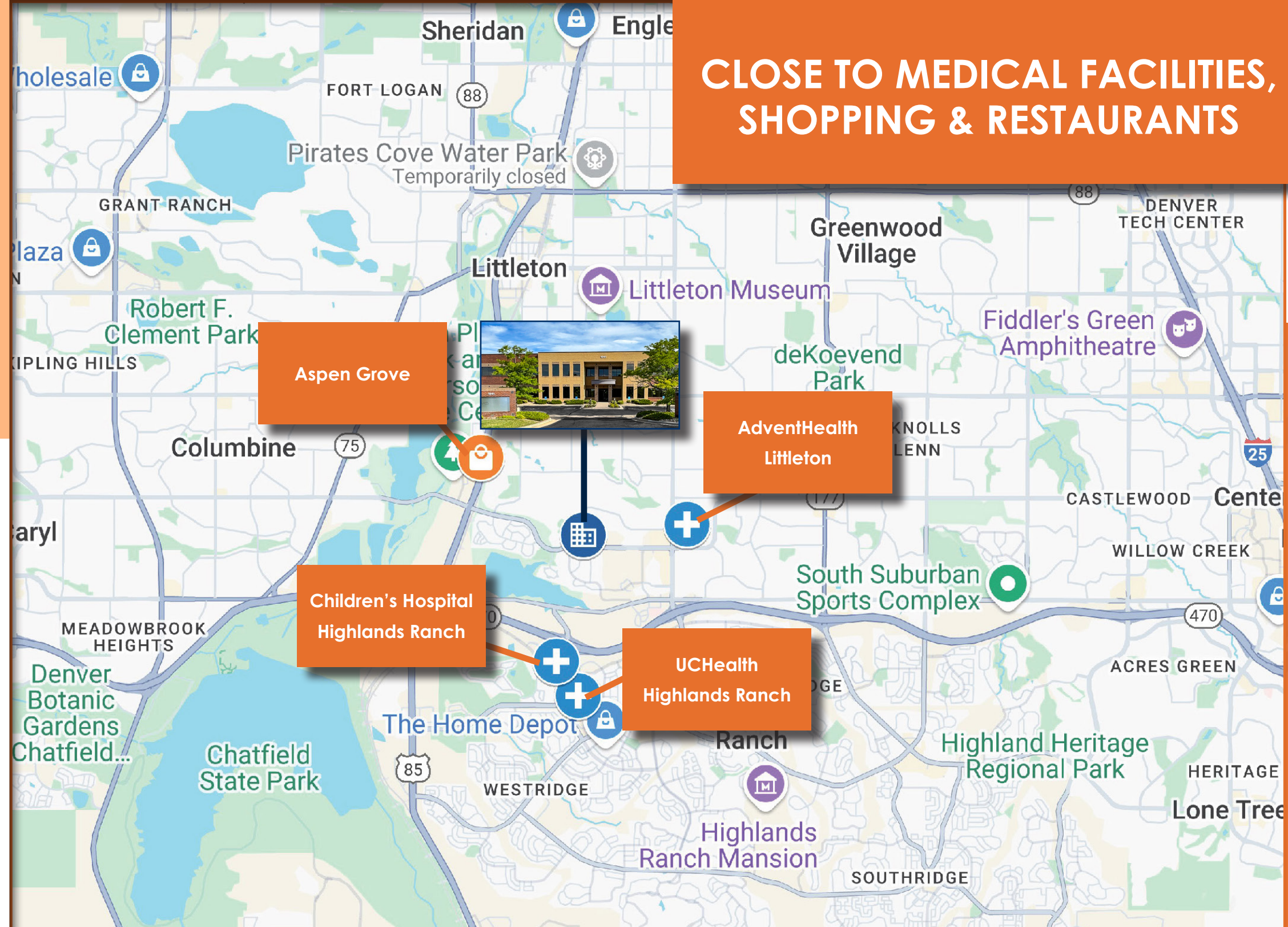


PROPERTY HIGHLIGHTS:

- Signage Opportunities
- Great Location with Easy Access to Littleton, Highlands Ranch, Ken Caryl, Englewood, Sterling Ranch and Greenwood Village
- Close Proximity to Multiple Medical Facilities, Including Littleton, UCHealth, and Children's Hospitals
- Bright, Newly Renovated 1st & 2nd Floor Lobbies
- Suite Options that offer Drive-In Door, Lab Area, Showers & Training Room
- Leasing Options Available Starting from 5,020 SF
- Near restaurants and shopping

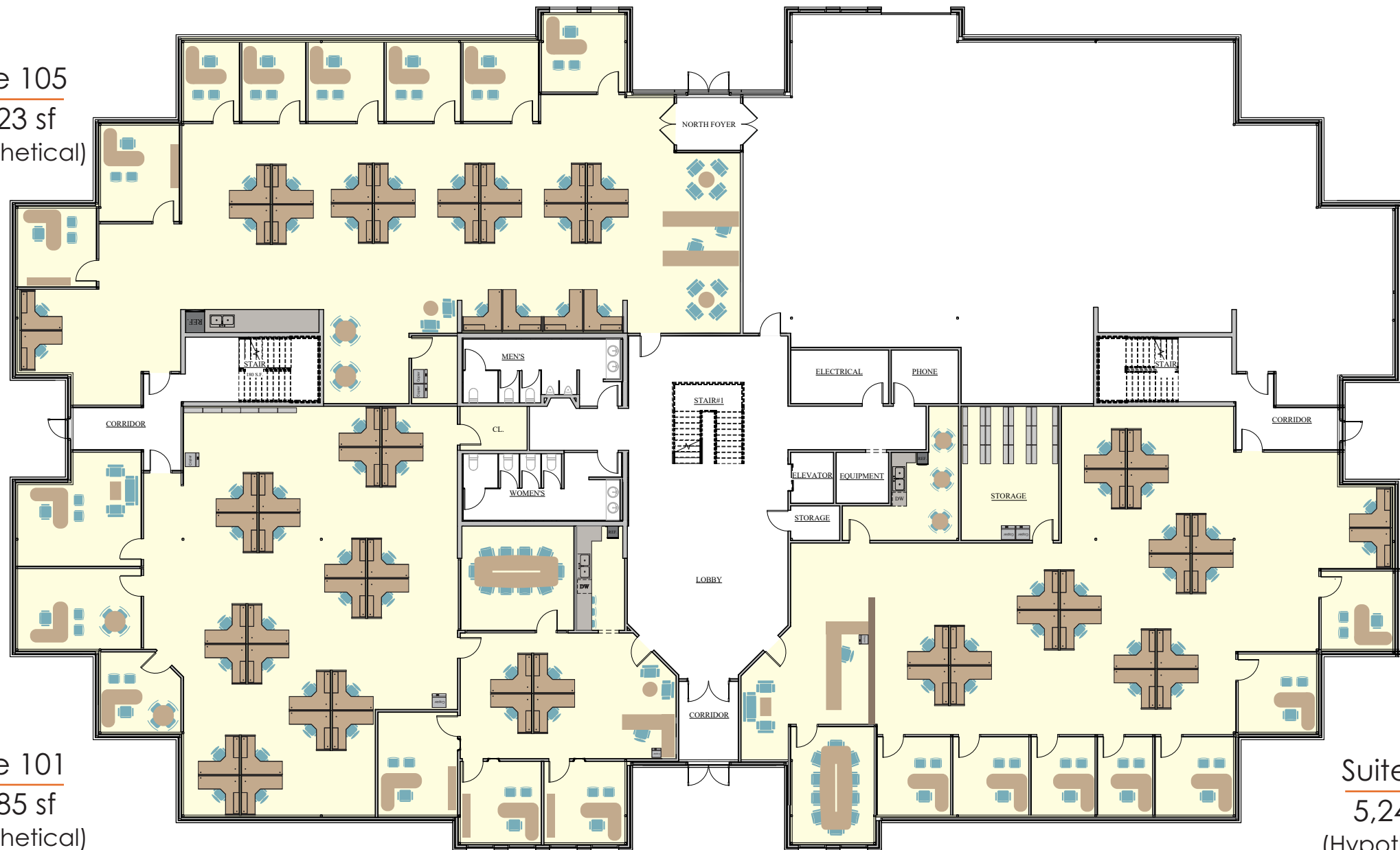


CLOSE TO MEDICAL FACILITIES, SHOPPING & RESTAURANTS





Suite 105
5,023 sf
(Hypothetical)



First Floor

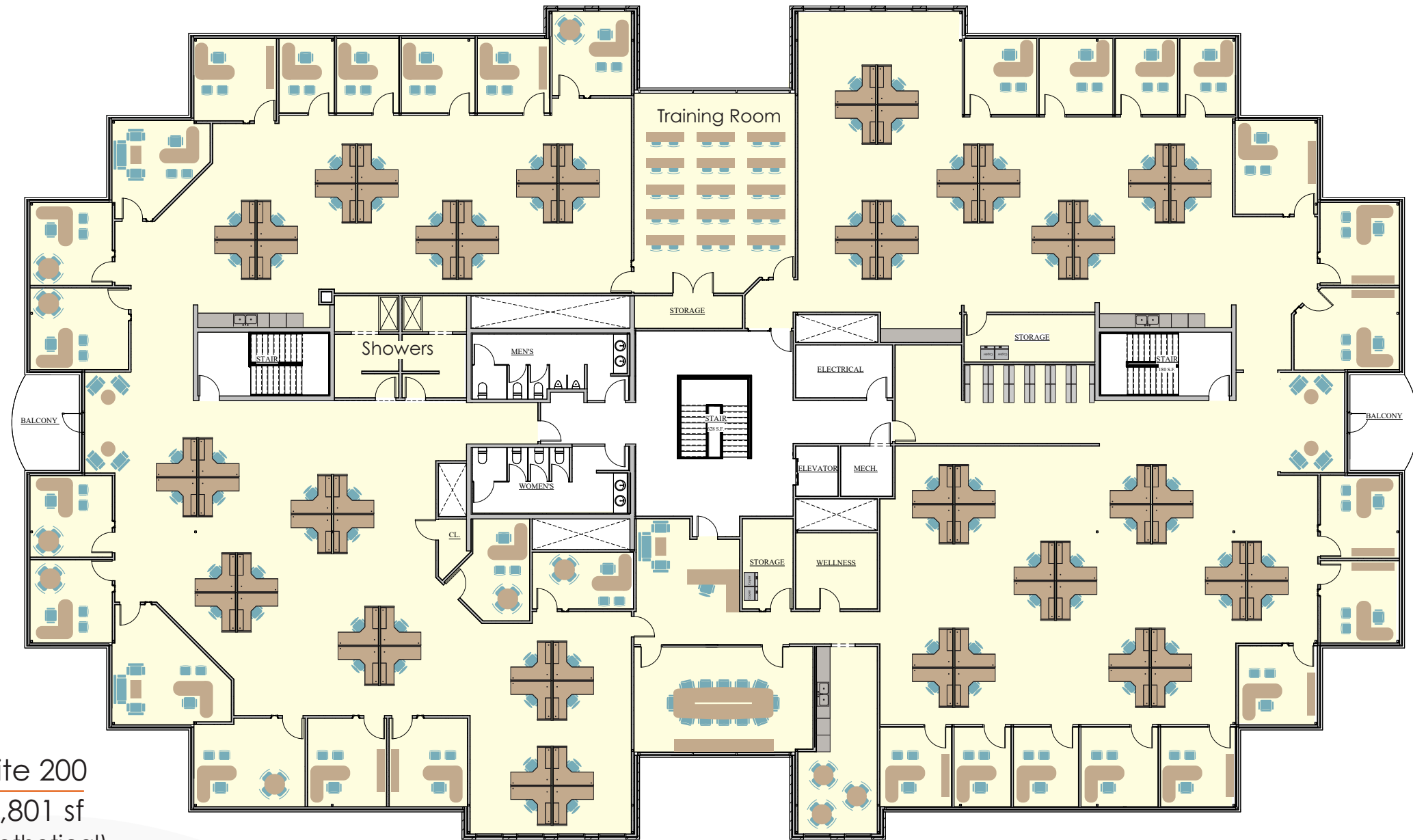
Suite 101
5,185 sf
(Hypothetical)

Suite 100
5,243 sf
(Hypothetical)

AVAILABLE SUITES

PREMISES
PREMISES COMMERCIAL REAL ESTATE LLC

The information contained herein, while not guaranteed, has been secured from sources we believe to be reliable. Different brokerage relationships are available which include Seller/Landlord Agency, Buyer/Tenant Agency and Transaction Broker. Premises Commercial Real Estate, LLC is acting in this capacity as Landlord's/Sublessor's Agent, unless otherwise agreed, and owes its fiduciary allegiance to Landlord/Sublessor as defined by Colorado Real Estate Commission.



Second Floor



AVAILABLE SUITES

For leasing information contact:

Matt Smith | 303.996.8460
msmith@premisescommercial.com

Michelle Gertzman | 720.743.6399
mgertzman@premisescommercial.com

The information contained herein, while not guaranteed, has been secured from sources we believe to be reliable. Different brokerage relationships are available which include Seller/Landlord Agency, Buyer/Tenant Agency and Transaction Broker. Premises Commercial Real Estate, LLC is acting in this capacity as Landlord's/Sublessor's Agent, unless otherwise agreed, and owes its fiduciary allegiance to Landlord/Sublessor as defined by Colorado Real Estate Commission.