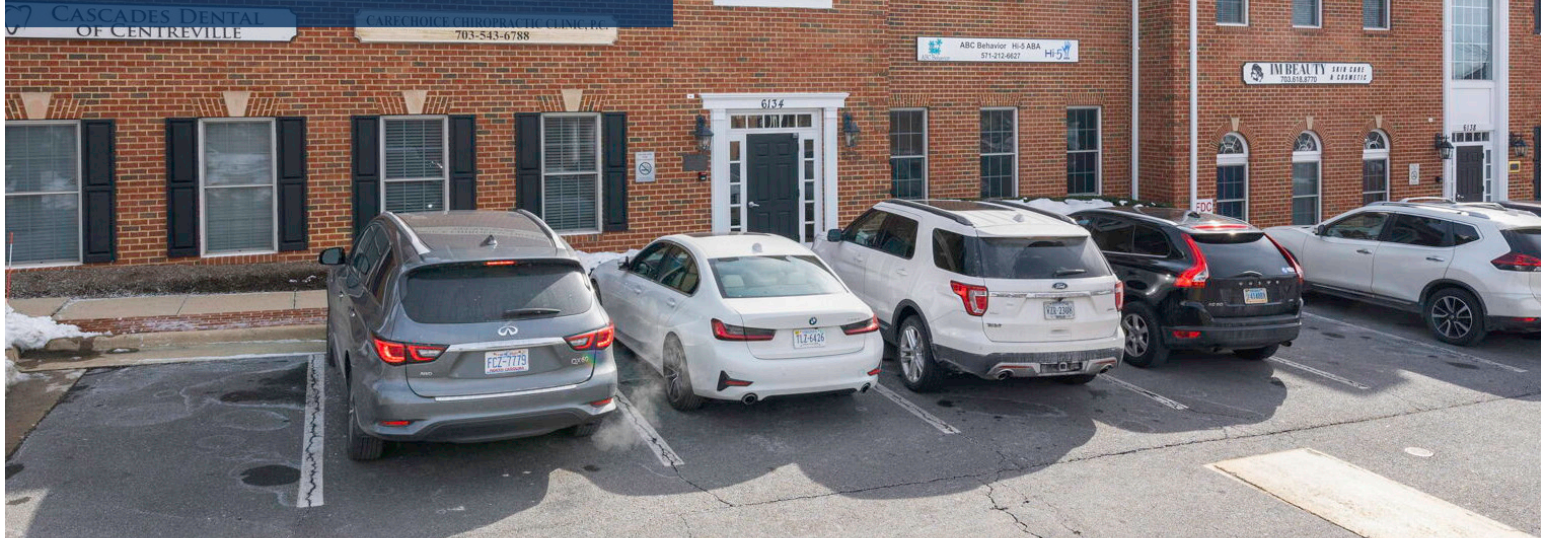


# DENTAL OFFICE SPACE FOR SALE OR LEASE



## WHAT MATTERS TO YOU >

### LOCATION

CONVENIENT ACCESS OFF I-66  
AND ROUTE 28

### SIZE

3,280 SF

## REDWOOD SQUARE

6134 REDWOOD SQUARE CENTRE  
SUITE 201/202  
CENTREVILLE, VA 20121

### ADDITIONAL FEATURES

- 7 operatories, admin office, bathroom, waiting area, reception desk, breakroom
- Exterior signage available
- Motivated owner
- Free surface parking



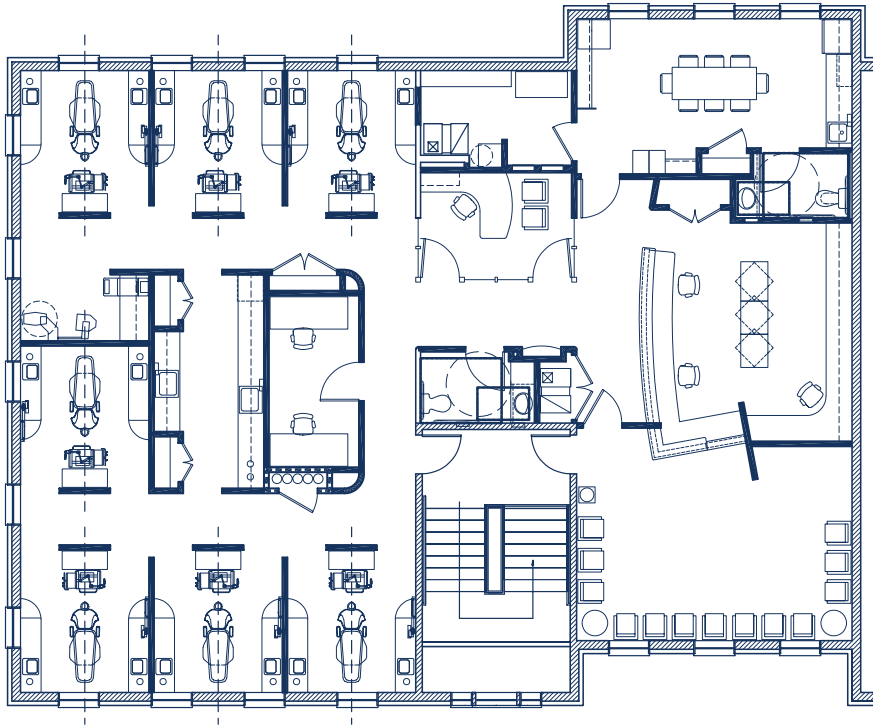
3 Bethesda Metro Center, Suite 700 // Bethesda, MD 20814  
301.235.1300 // gzrealty.net

CONTACT US TODAY

**ADRIAN DOMINGUEZ**  
ADRIAN@GZREALTY.NET  
703.856.0952

**NORA BOWEN**  
NORA@GZREALTY.NET  
703.401.6235

## Suite 201/202 | 3,280 SF



3 Bethesda Metro Center, Suite 700 // Bethesda, MD 20814  
301.235.1300 // [gzrealty.net](http://gzrealty.net)

CONTACT US TODAY

**ADRIAN DOMINGUEZ**  
[ADRIAN@GZREALTY.NET](mailto:ADRIAN@GZREALTY.NET)  
703.856.0952

**NORA BOWEN**  
[NORA@GZREALTY.NET](mailto:NORA@GZREALTY.NET)  
703.401.6235