

NORTHPOINT 35

1203 REUTHINGER PARKWAY, LAREDO, TEXAS

PHASE II

±238,000 SF CLASS A INDUSTRIAL



CBRE

STRATEGICALLY LOCATED

Northpoint 35 is a ±238,000 SF, two-phase industrial development strategically located off Interstate 35 on approximately 50 acres in Webb County, Texas. It's in the fast-growing Laredo market, offering easy access to key transportation points:

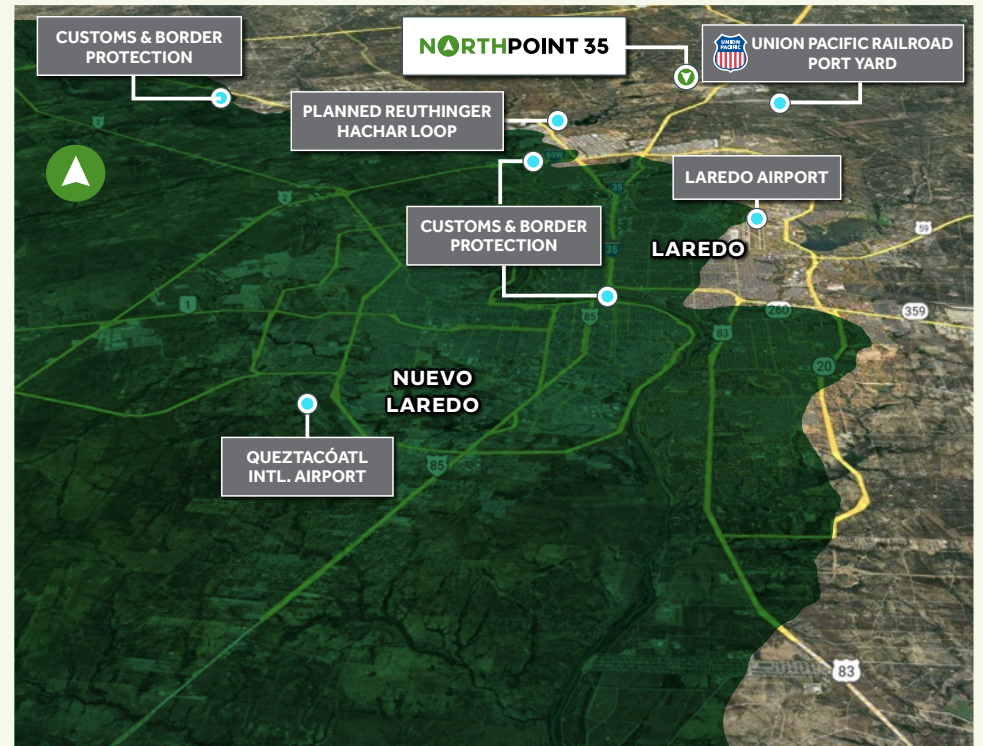
UNION PACIFIC
RAILROAD PORT YARD
3.5 MILES

LAREDO
INTERNATIONAL AIRPORT
14.9 MILES

WORLD TRADE
BRIDGE
9.2 MILES

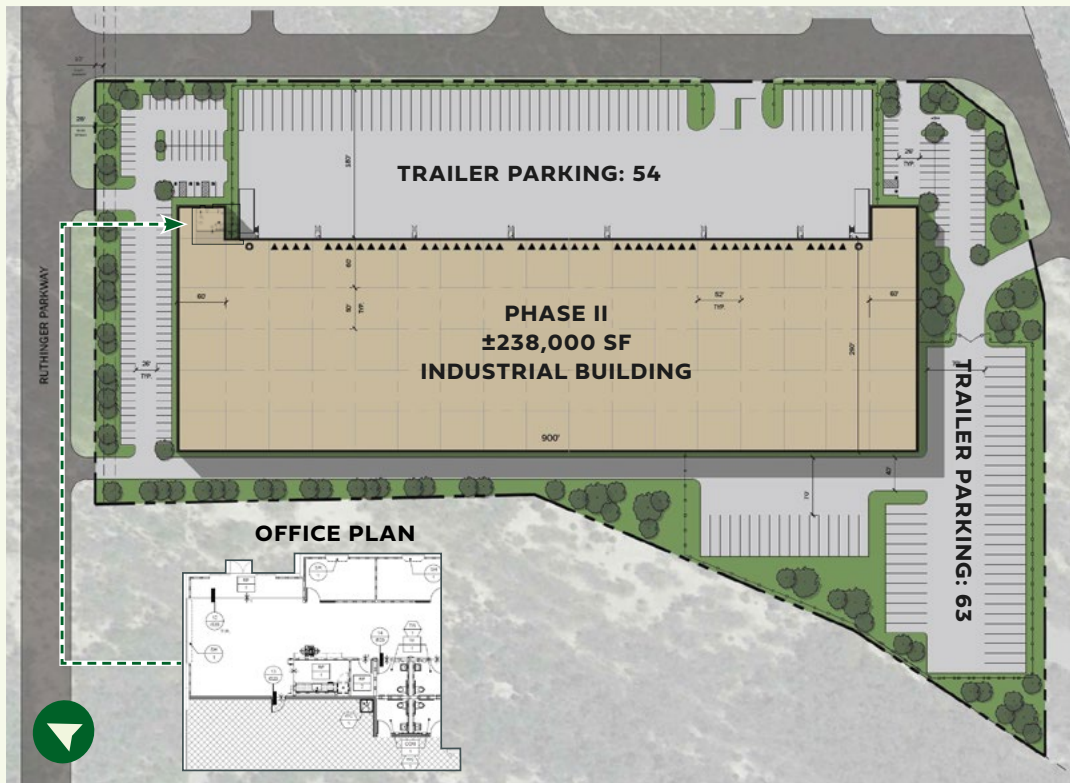
LAREDO-COLOMBIA SOLIDARITY
INTERNATIONAL BRIDGE
3.5 MILES

NORTHPOINT 35 ALSO HAS
DIRECT ACCESS
TO INTERSTATE 35 VIA MERCURY DRIVE.



SITE PLAN

BUILDING(S) DETAIL



Building Size: ±238,000 SF



Office SF: ±1,928 SF



Trailer Parking: 117



CTPAT Compliant



Highly Secured, Fully Fenced and Gated Development



Fully Lit Property with Asphalt Millings Surface in Yard/Trailer Parking Area Surface



Wheel Stops and Wheel Pads for all Spaces



LED Lighting in Warehouse



156 Car Parking Spots



48 Dock High Doors



2 Drive-In Doors

NORTHPOINT 35

1203 REUTHINGER PARKWAY, LAREDO, TEXAS



CONTACT US

JOSHUA AGUILAR, SIOR

Executive Vice President

+1 210 253 6049

joshua.aguilar@cbre.com

ROB BURLINGAME, SIOR, CCIM

Executive Vice President

+1 210 507 1123

rob.burlingame@cbre.com

BRAD O'NEILL

Vice President

+1 210 253 6070

brad.oneill@cbre.com

© 2025 CBRE, Inc. All rights reserved. This information has been obtained from sources believed reliable, but has not been verified for accuracy or completeness. You should conduct a careful, independent investigation of the property and verify all information. Any reliance on this information is solely at your own risk. CBRE and the CBRE logo are service marks of CBRE, Inc. All other marks displayed on this document are the property of their respective owners. Photos herein are the property of their respective owners. Use of these images without the express written consent of the owner is prohibited.

CBRE