



# 1301 SHOREWAY

FOR LEASE

1301 SHOREWAY ROAD. BELMONT. CA

## Available Suites

SUITES RANGING FROM ±531 TO ±31,662 SF



**NEWMARK**

**Dan Matteucci**

650.358.5276

[dan.matteucci@nrmk.com](mailto:dan.matteucci@nrmk.com)

CA RE License #01848064

**John Kraft**

650.358.5277

[john.kraft@nrmk.com](mailto:john.kraft@nrmk.com)

CA RE License # 01787698

**Sarah Bohannon**

650.358.5268

[sarah.bohannon@nrmk.com](mailto:sarah.bohannon@nrmk.com)

CA RE License #01940402



# AVAILABLE SUITES



## VARIOUS SUITES AVAILABLE

ranging from  
 $\pm 531$  to  $\pm 31,662$  sf

**SUITE 170:**  $\pm 531$  sf

**SUITE 175:**  $\pm 3,092$  sf

**SUITE 195:**  $\pm 727$  sf

**SUITE 300:**  $\pm 31,662$  sf

**SUITE 325:**  $\pm 1,850$  sf

**SUITE 400:**  $\pm 20,062$  sf

**SUITE 425:**  $\pm 20,870$  sf







## HIGH-QUALITY

finished office suites



## FITNESS CENTER

with showers & lockers



## REMODELED

lobby & common area  
destination dispatch elevator system  
HVAC upgrades



## ON-SITE

common area conference room



## OUTDOOR COLLABORATION

bbq & basketball area  
dedicated outdoor patio/balcony space



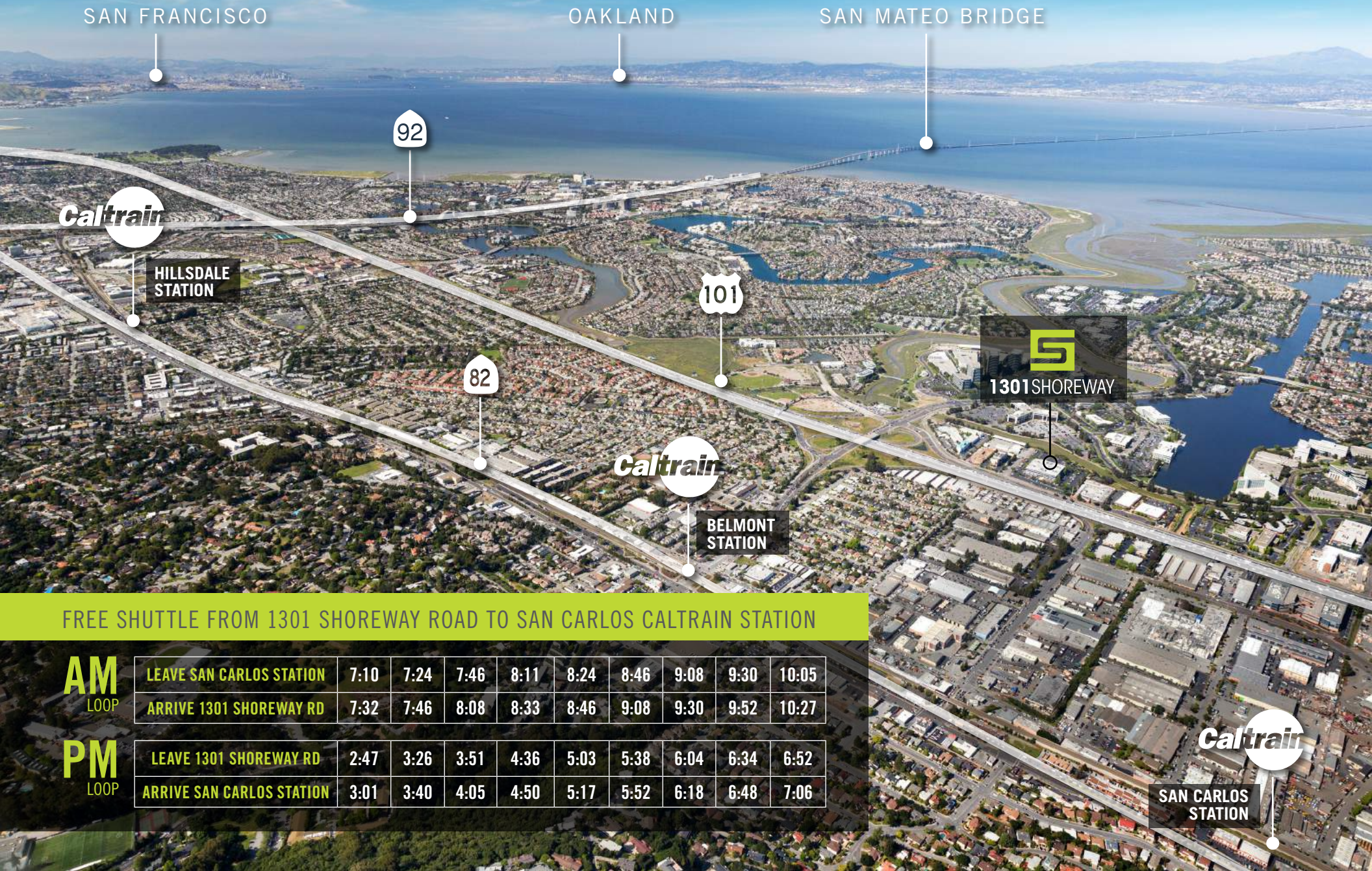
## CHARGING STATIONS

for electric vehicles



# LOCAL TRANSPORTATION

Shuttle access to the San Carlos Caltrain Station with  
**DIRECT PICK-UP / DROP-OFF**  
at 1301 Shoreway Road



FREE SHUTTLE FROM 1301 SHOREWAY ROAD TO SAN CARLOS CALTRAIN STATION

**AM**  
LOOP

LEAVE SAN CARLOS STATION	7:10	7:24	7:46	8:11	8:24	8:46	9:08	9:30	10:05
ARRIVE 1301 SHOREWAY RD	7:32	7:46	8:08	8:33	8:46	9:08	9:30	9:52	10:27

**PM**  
LOOP

LEAVE 1301 SHOREWAY RD	2:47	3:26	3:51	4:36	5:03	5:38	6:04	6:34	6:52
ARRIVE SAN CARLOS STATION	3:01	3:40	4:05	4:50	5:17	5:52	6:18	6:48	7:06



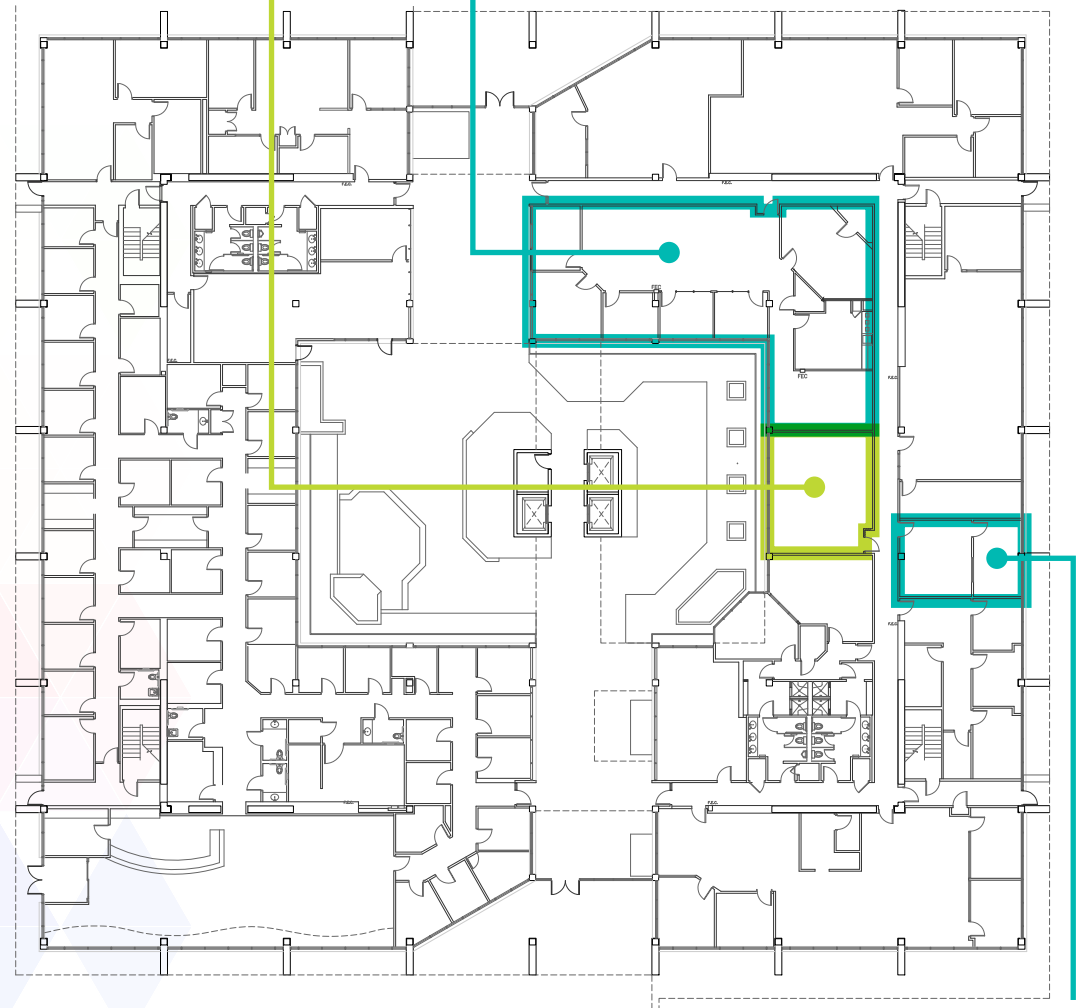


# FLOOR PLANS

**Suite 195**  
±727 sf

**Suite 175**  
±3,092 sf

**Existing 1st Level  
Floor Plan**



**Suite 170**  
±531 sf

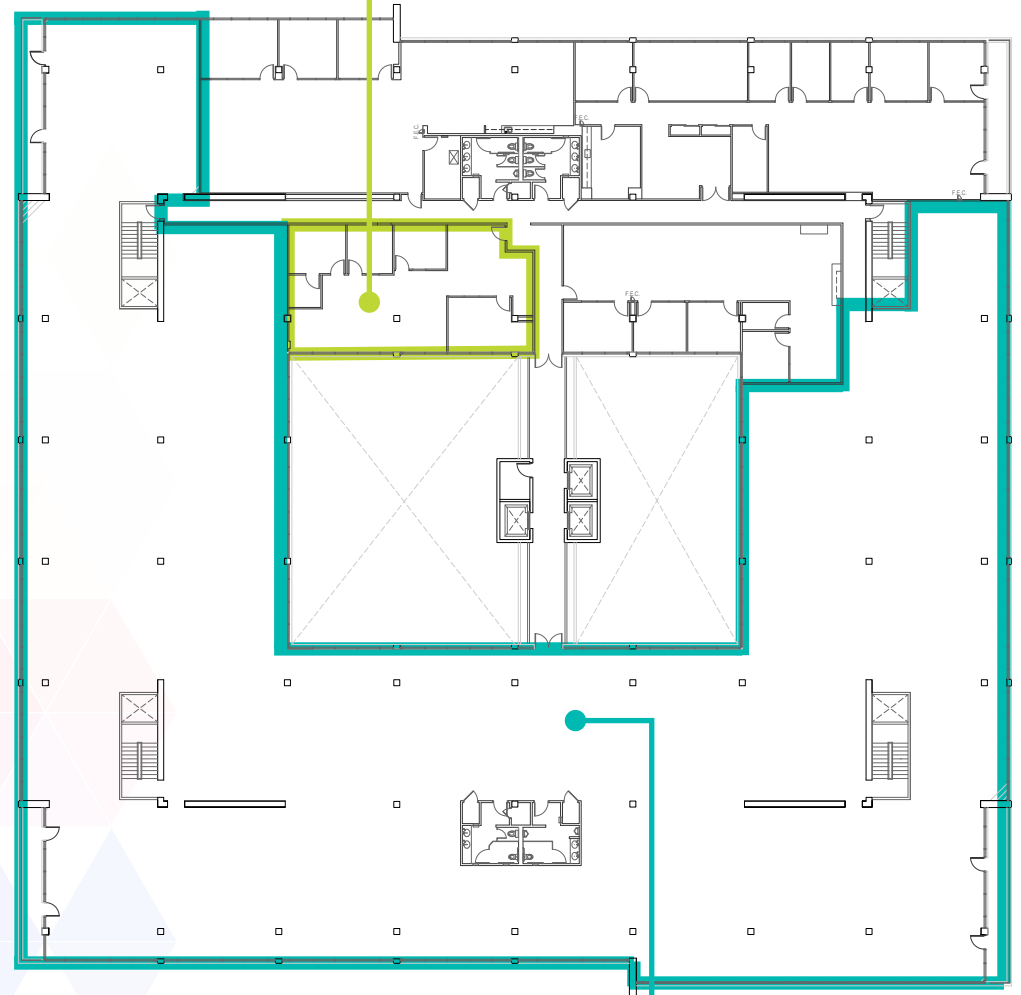
1301 SHOREWAY ROAD. BELMONT. CA



# FLOOR PLANS

**Suite 325**  
±1,850 sf

Existing 3rd Level  
Floor Plan



**Suite 300**  
±31,662 sf

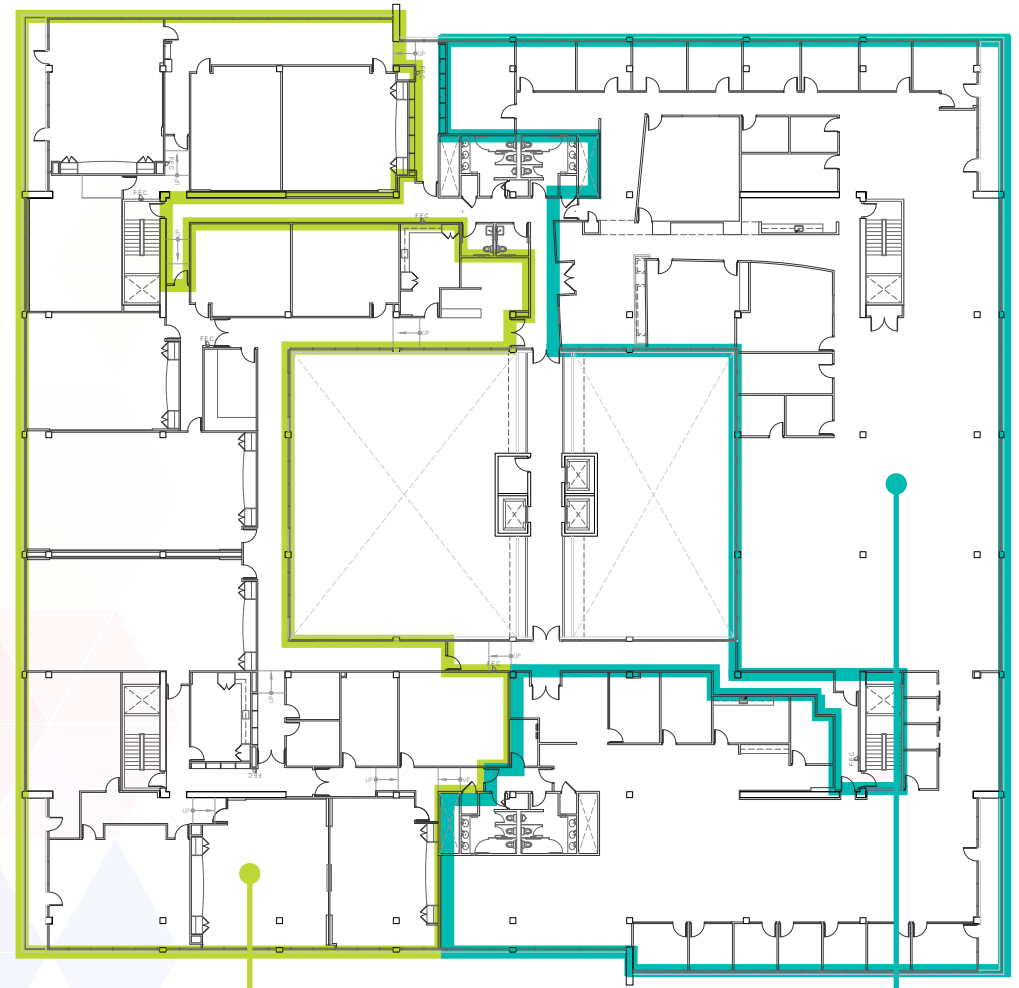
1301 SHOREWAY ROAD, BELMONT, CA





# FLOOR PLANS

## Existing 4th Level Floor Plan



**Suite 400**  
±20,062 sf

**Furnished  
Suite 425**  
±20,870 sf

1301 SHOREWAY ROAD. BELMONT. CA





**1301 SHOREWAY**

**FOR LEASE**

1301 SHOREWAY ROAD. BELMONT. CA



**Dan Matteucci**

650.358.5276

[dan.matteucci@nmrk.com](mailto:dan.matteucci@nmrk.com)

CA RE License #01848064

**John Kraft**

650.358.5277

[john.kraft@nmrk.com](mailto:john.kraft@nmrk.com)

CA RE License # 01787698

**Sarah Bohannon**

650.358.5268

[sarah.bohannon@nmrk.com](mailto:sarah.bohannon@nmrk.com)

CA RE License #01940402

2950 SOUTH DELAWARE STREET, SUITE 125  
SAN MATEO, CA 94403

**NEWMARK**

The distributor of this communication is performing acts for which a real estate license is required. The information contained herein has been obtained from sources deemed reliable but has not been verified and no guarantee, warranty or representation, either express or implied, is made with respect to such information. Terms of sale or lease and availability are subject to change or withdrawal without notice.

18-0509.01/22