

ASHTON CREEK INDUSTRIAL PARK

NEW INDUSTRIAL DEVELOPMENT

14504 – 14512 Route 1, Chester (Chesterfield County), Virginia 23831



For Sale
79 +/- Acres



Terry Earnest, CCIM
(804) 744-9290
terry@ccrealtyllc.com

Parker Hall
(804) 339-7639
parker@ccrealtyllc.com

Chesterfield Commercial Realty
5001 West Village Green Drive, Suite 203
Midlothian, VA 23112



Investment Summary

79 +/- Acres Available For Sale

Sales Price: \$25,000,000

Zoning: I-2 General Industrial District

Located in the Chesterfield County Technology Zone

Owner Installing 40' Industrial Park Entrance by August 2024

Heavy Duty 12-inch Gravel Base

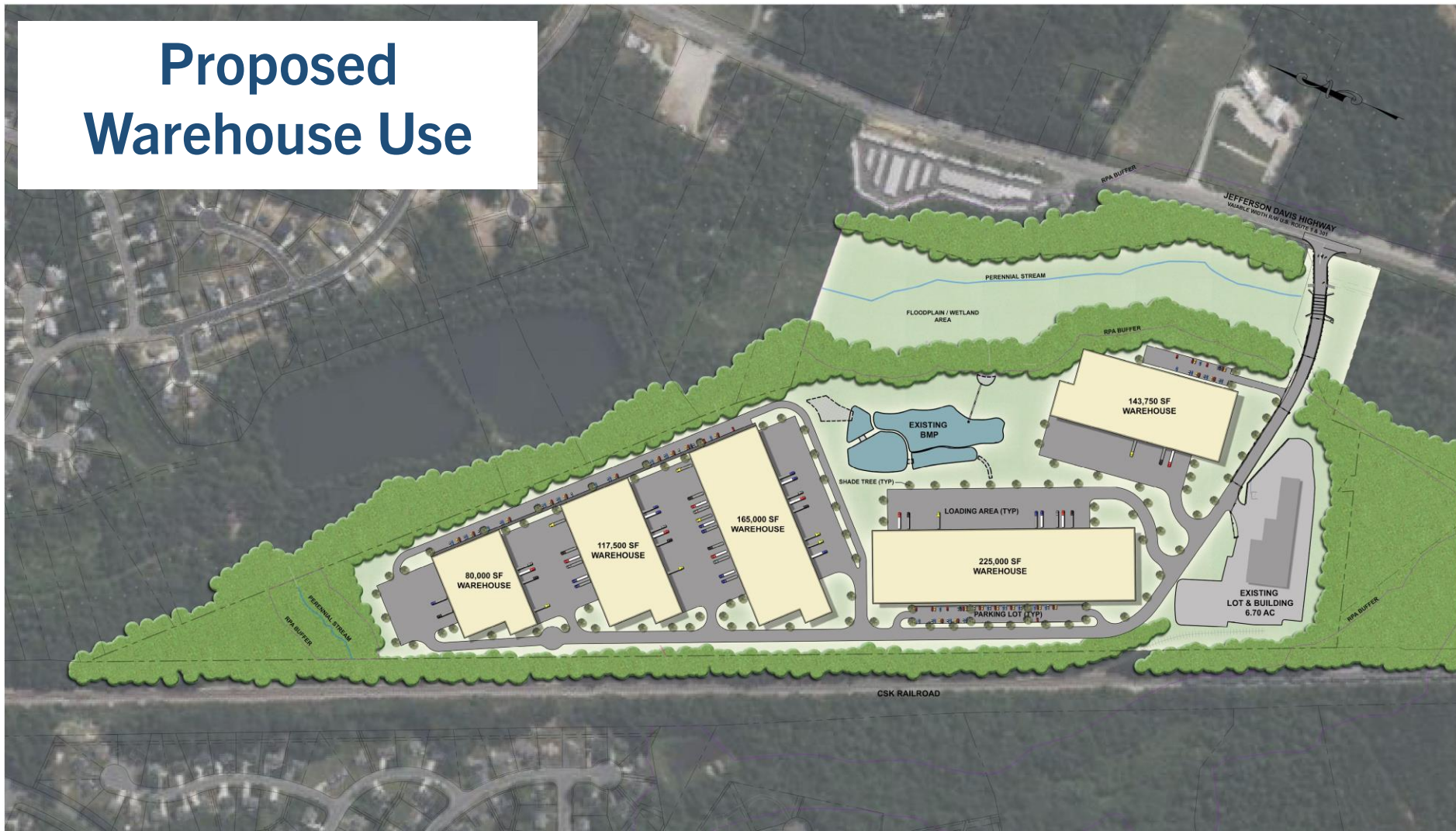
Fenced and Secure

County Water & Sewer Onsite

Adjacent to CSX Railroad

Located very close to I-95, I-295, and Route 288

Proposed Warehouse Use

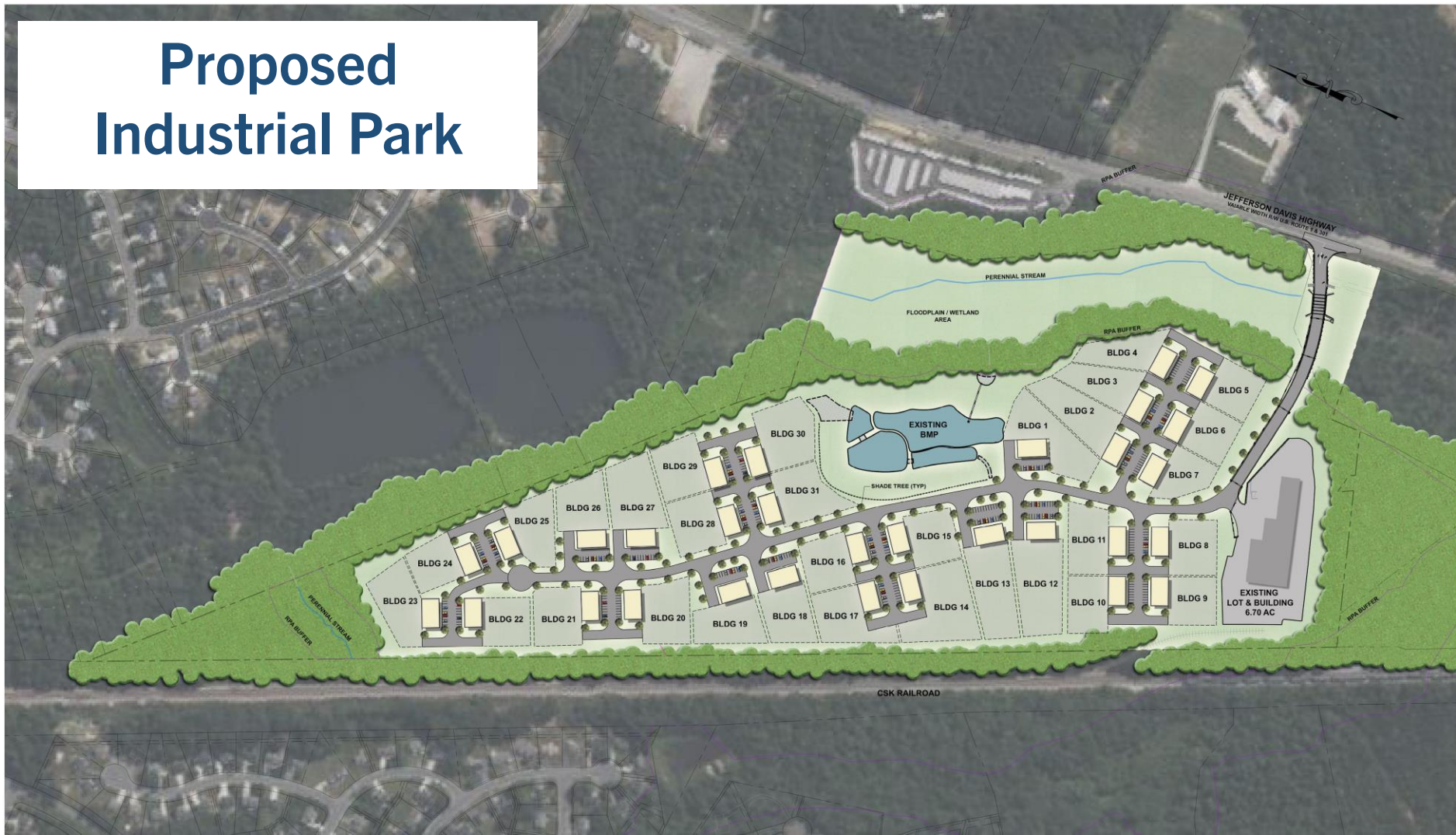


Building Area 750,000 +/- RSF

Total Land Area 79 +/- Acres

Buildings 5 Divisible Warehouses

Proposed Industrial Park

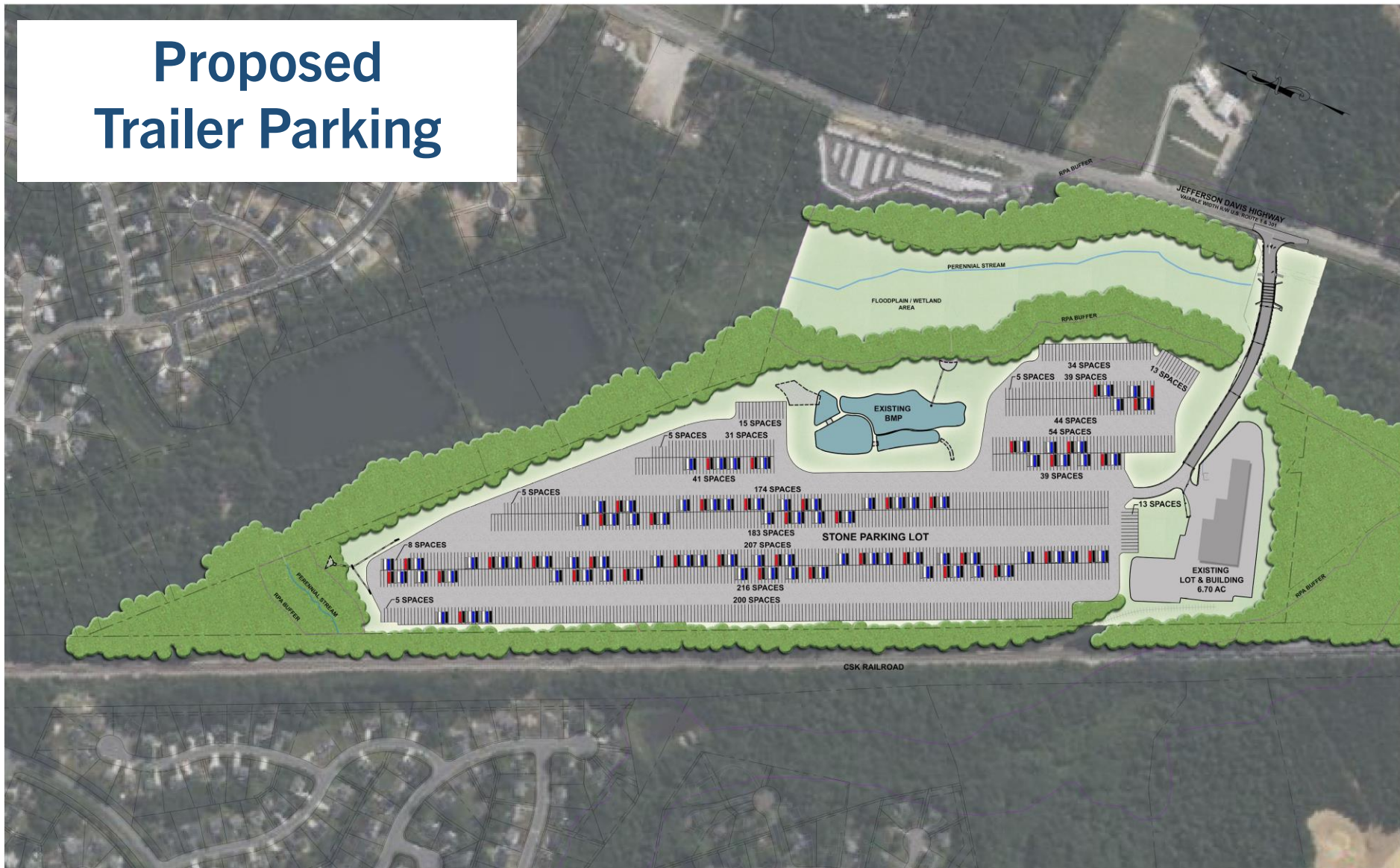


Building Area 31 Building of 6,000 – 12,000 +/- RSF

Total Land Area 79 +/- Acres

Buildings 31 Contactor Shops With Yard

Proposed Trailer Parking



Total Land Area

79 +/- Acres

Trailer Parking Spaces

1,331 Trailer Spaces



Demographics

5 Miles

Total Population

81,492

Population Growth 2023-2028

+ 8.87%

Median Household Income

\$78,248



The Chesterfield County Technology Zone offers a range of advantages for businesses. Being in the Technology Zone is an attractive destination for companies looking to grow and thrive in a technology-focused environment.



Tax Incentives: Businesses within the Technology Zone may be eligible for various tax incentives, including reduced machinery and tool taxes, sales and use tax, and business license tax exemptions. These incentives can significantly lower operating costs.



Supportive Regulatory Environment: Chesterfield County is known for its business-friendly regulatory environment. This includes streamlined permitting processes and a responsive local government that is committed to supporting the growth of businesses.



Potential for Growth and Expansion: Being in a Technology Zone positions businesses for growth and expansion. The environment is conducive to attracting investors, partners, and customers who are seeking cutting-edge technology solutions.



Access to a Skilled Workforce: Chesterfield County is home to a diverse and well-educated workforce. This ensures that businesses can utilize skilled talent to support their operations.



Collaborative Environment: The Technology Zone fosters a culture of collaboration and innovation. Businesses benefit from being part of a community where they can continuously network and work with other companies.

Prime Location

This newly developed 45-acre industrial site boasts a strategic industrial and commercial activity. It is easily accessible via major transportation routes, including I-95, I-64, and I-295, facilitating efficient transportation and logistics.

Proximity to Key Markets

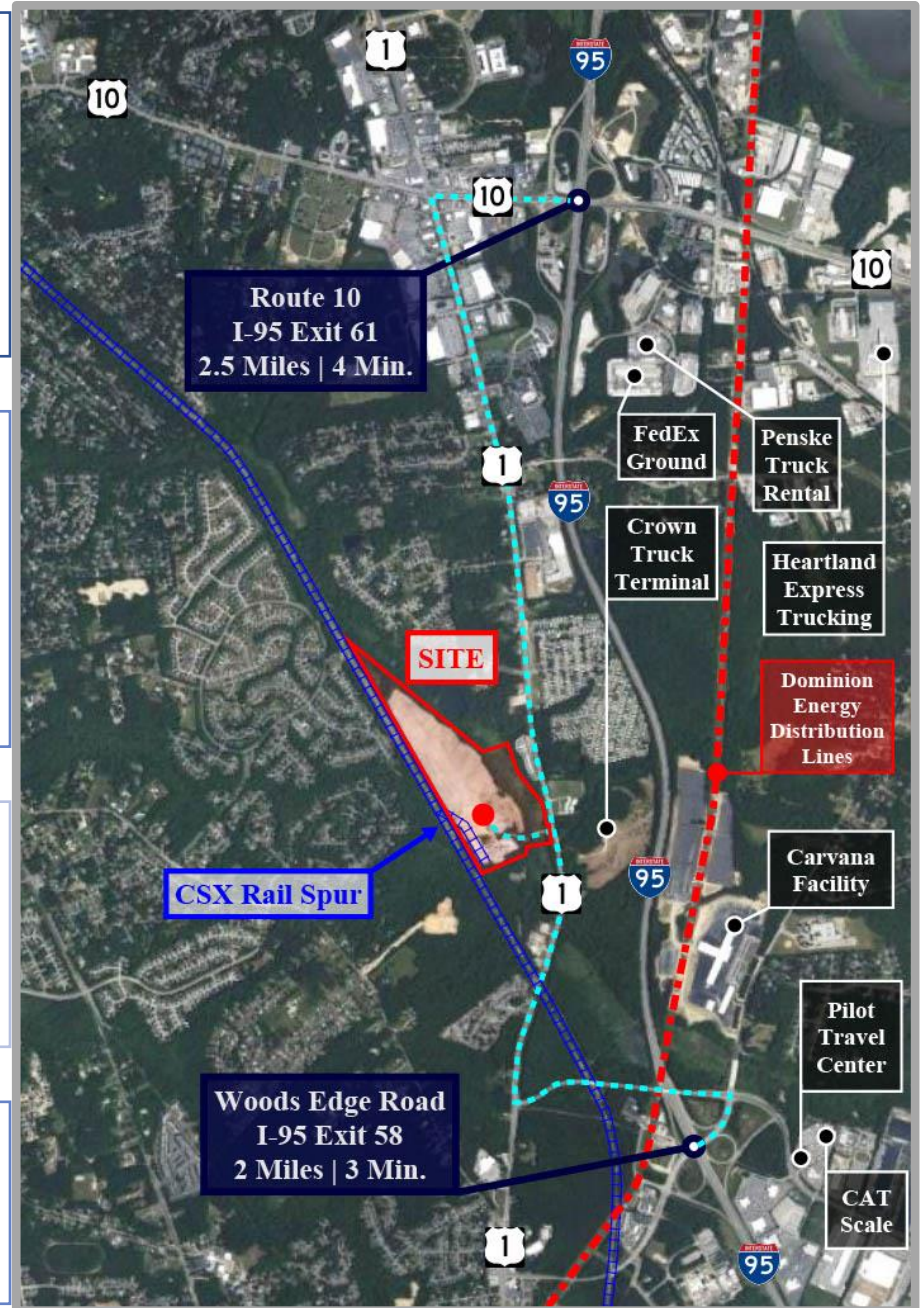
Located within the Richmond MSA along the I-95 corridor and in close proximity to major commercial hubs and transportation networks, this property is ideal for businesses that require easy access to regional, national, and even international markets.

Investment Potential

The property is primed for immediate development and occupancy. This site can support the industry's long-term growth and operational needs.

I-2 Zoning

The property's zoning permits a wide range of industrial uses, making it ideal for outside storage yards and build-to-suit building construction.





RICHMOND
INTERNATIONAL AIRPORT
17 Miles

I-64
18 Miles

THE PORT OF VIRGINIA
13 Miles

I-895
9 Miles

Route 288
3 Miles

I-95 N
2.5 Miles

I-295
5 Miles

SITE

I-95 S
2.0 Miles

Chesterfield County has recently been recognized as the “17th Best Place to Live in America”, “One of the 100 Best Communities in America for Young People”, and it has the lowest crime rate in the Richmond Metropolitan region and is the fourth largest county in Virginia. The county is proud to provide its own public utility system and complete local government services including police protection, fire protection, and emergency rescue to all businesses.

