

PRIME OFFICE FOR LEASE

# SUNMARKE BUILDING

12900 STROH RANCH PLACE, PARKER, CO 80134

TREVEY  
COMMERCIAL



## PROPERTY FEATURES

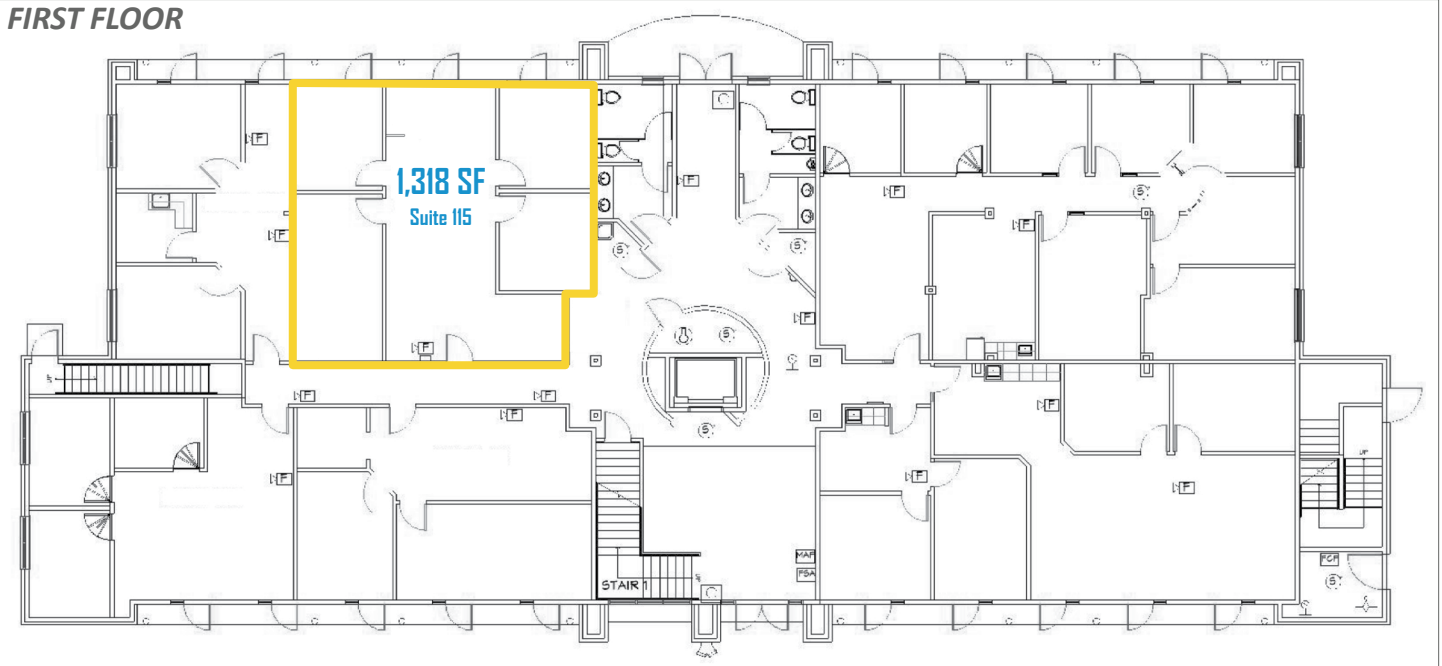
- **Suite 115 (±1,318 SF):** Featuring Four (4) Offices, Reception and Kitchenette - Available June 1, 2026
- **Suite 220 (±684 SF):** Featuring Two (2) Offices, Reception, Large Closet / 3rd Office - Available Immediately
- Amenities Include: Janitorial Services, High Speed Internet, 24-Hour Access / Secure Building
- On-site Property Management
- 1/2 Block Off of Parker Road on the West Side
- Adjacent to King Soopers Center, Bellco Credit Union, The UPS Store, Walgreens and Many More
- 7 Minutes to E-470, 15 Minutes to I-25, and 30 Minutes to Downtown Denver

## PROPERTY DETAILS

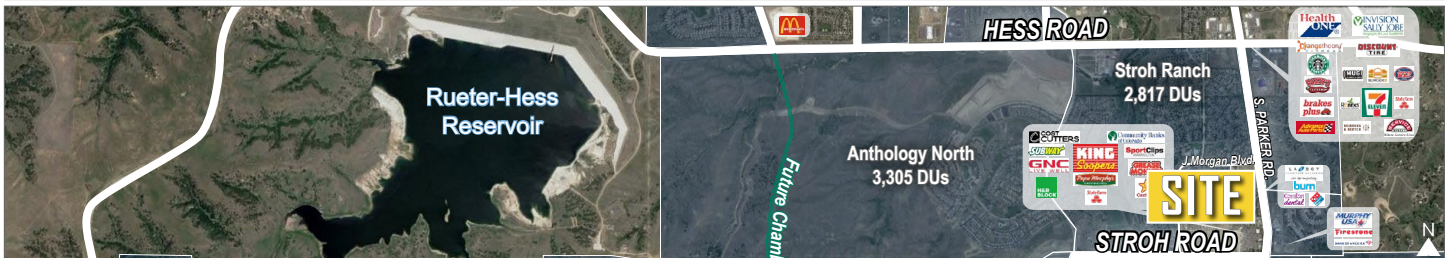
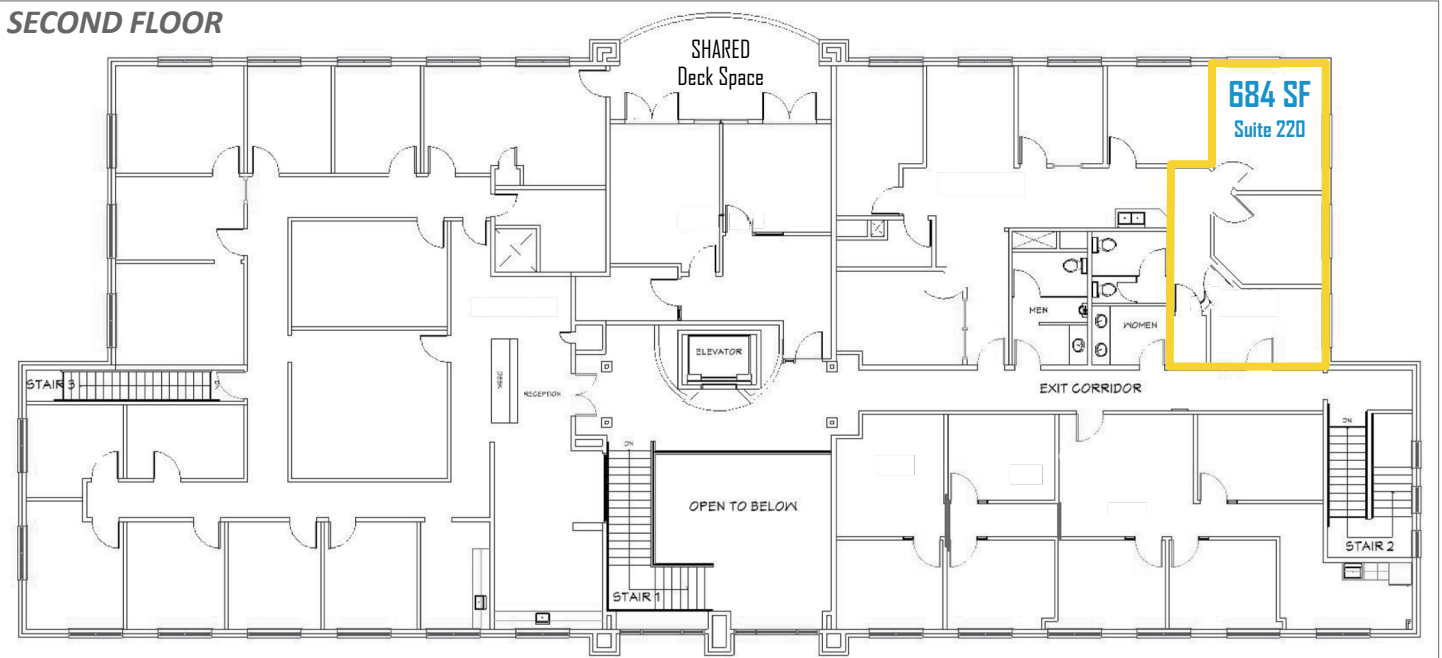
AVAILABLE	<ul style="list-style-type: none"><li>• <b>Suite 115: ±1,318 SF</b> \$2,965.50 / Month</li><li>• <b>Suite 220: ±684 SF</b> \$1,539.00 / Month</li></ul>
LEASE RATE	\$27.00 / SF MG (Modified Gross)
BUILDING SIZE	16,329 SF
Y.O.C.	2002
PARKING	4:1,000
CITY / COUNTY	Parker / Douglas
ZONING	Commercial

BUILDING FLOOR PLAN

FIRST FLOOR



SECOND FLOOR



BROKERAGE DISCLOSURE