

# NEW WAREHOUSE SPACE FOR LEASE

4254 HANAHAO PL, PUHI INDUSTRIAL PARK, LIHUE, HI 96766 | KAUAI



# SITE PLAN

PUHI ROAD

drawing not  
to scale

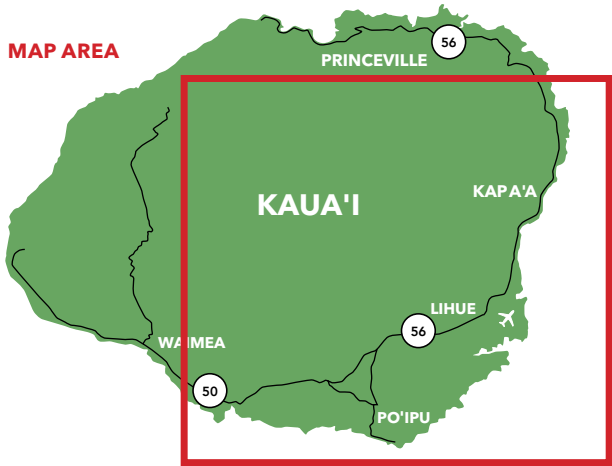
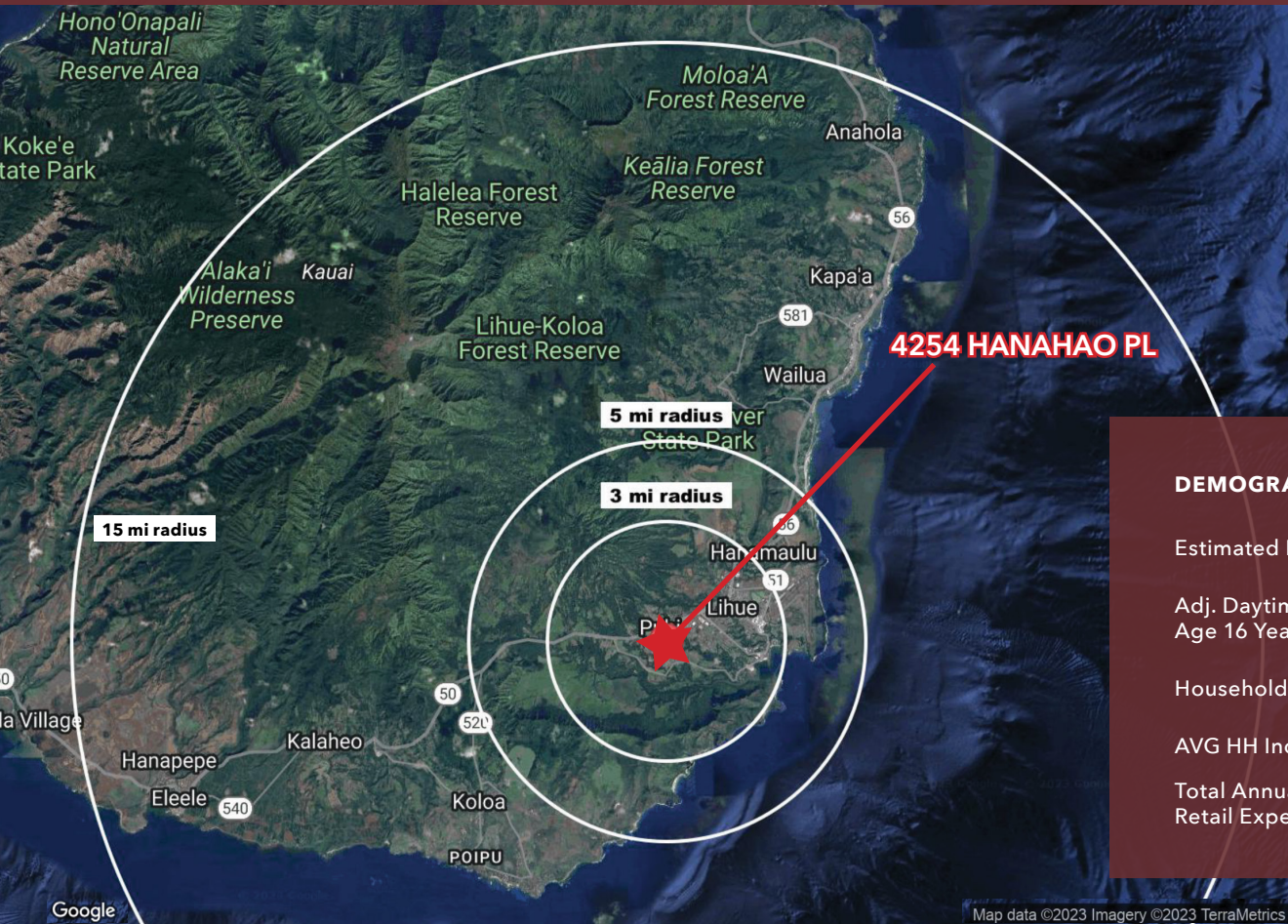


artist's rendering



# AREA HIGHLIGHTS & DEMOGRAPHICS

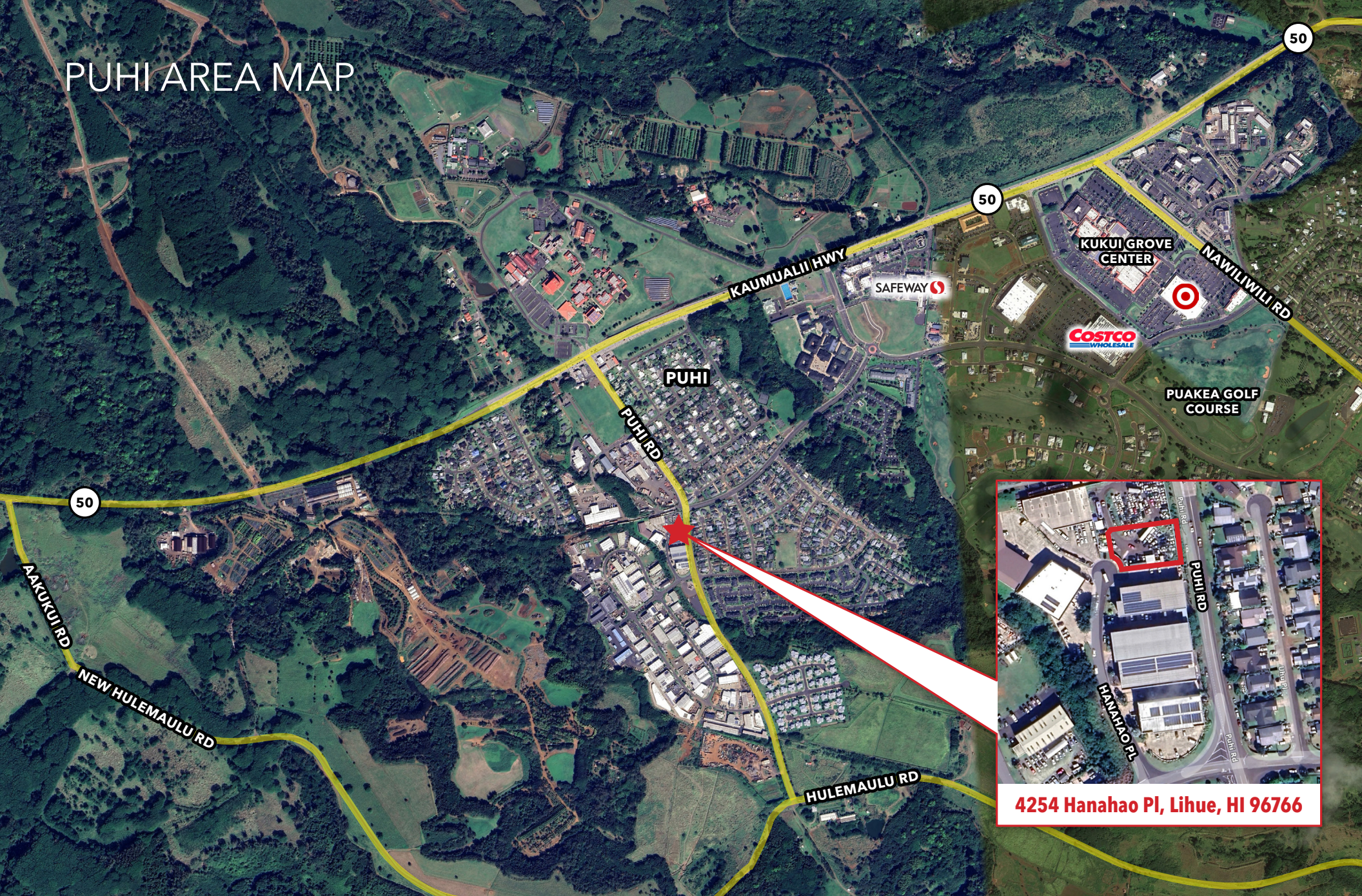
- 1,736 Visitor Units in the Lihue Area
- Additional 1,903 Visitor Units in the nearby Wailua/Kapaa Area
- Kauai received an estimated 1.37 million visitors in 2024
- Kauai resident population (2025 estimated): 73,996



DEMOGRAPHICS	3 MILE	5 MILE	15 MILE
Estimated Population 2025	12,167	16,154	58,164
Adj. Daytime Demographics Age 16 Years or Over	15,039	17,102	38,659
Households	4,186	5,260	19,772
AVG HH Income	\$133,669	\$128,383	\$132,958
Total Annual Consumer Retail Expenditure	\$241.1 M	\$302.38 M	\$1.14 B



# PUHI AREA MAP





# LEASE DETAILS

New, proposed warehouse for lease in Puhi Industrial Park, located less than three miles from downtown Lihue, Kauai. Many potential uses as your future showroom, retail outlet, warehouse, or multi-level office space with ample natural light. This is a very unique parcel with excellent visibility from Puhi Road and vehicle access from Hanohao Place or Puhi Road. Features include a planned 18-stall lot, on-street parking, full-size loading bay, two roll-ups, and a covered lanai with views. Perfect for a single tenant user, this space could be built-to-suit.



PROPOSED BLDG.	Ground Floor Area:	7,722 SF
	<u>Second Floor Area:</u>	<u>1,326 SF</u>
	Total Floor Area:	9,048 SF
PARKING	18 Stalls + Street Parking	
POTENTIAL USE	Retail, Showroom, Warehouse, Office	
TERM	10 Years	
GROSS RENT	\$3.00 PSF + Utilities	
AVAILABILITY	Upon completion (est. 2025)	
HIGHLIGHTS	<ul style="list-style-type: none"><li>• Brand new construction, could be built-to-suit</li><li>• Located in Puhi Industrial Park, Lihue</li><li>• Storefront visibility from Puhi Rd</li><li>• Vehicle access from Hanahao Pl &amp; Puhi Rd</li><li>• Single tenant building</li></ul>	

