

**FOR
LEASE**

743 COLUMBIA TURNPIKE

EAST GREENBUSH, NY 12061

800 SF OFFICE AVAILABLE



- **2 OFFICES PLUS PRIVATE ENTRANCE TO UNIT**
- MINUTES FROM I-95
- RECEPTION AND WORKSTATION AREAS
- AMPLE ON SITE PARKING
- DIRECTLY ON PUBLIC BUS ROUTE
- RECENTLY RENOVATED COMMON AREAS AND RESTROOMS
- SURROUNDED BY NUMEROUS DINING AND ENTERTAINMENT OPTIONS

FOR MORE
INFORMATION
PLEASE
CONTACT

THOMAS A. MILLER
NYS Licensed Associate Real Estate Broker
(518) 462-7491 x 110 office
(518) 495-1000 mobile
Tommy@CarrowRealEstate.com

AVAILABLE FOR LEASE

\$1,300 / Month
PLUS UTILITIES



Adding Value Through Professional Real Estate Services

the information herein has not been verified, and is provided without warranty unless otherwise guaranteed in writing. readers are advised to investigate and verify same prior to entering into a transaction.

**FOR
LEASE**

743 COLUMBIA TURNPIKE

EAST GREENBUSH, NY 12061

ABOUT
EAST GREENBUSH



East Greenbush is a town in Rensselaer County, New York, United States. It is a suburb of Albany, New York. The population was 16,473 at the 2010 census. The word Greenbush is derived from the Dutch *het groen bosch*, referring to the pine woods that originally covered the land.^[5] The first settlement of the land now known as East Greenbush was made by tenants under patroon Kiliaen van Rensselaer circa 1630. The town was established in 1855 as Clinton, and was renamed in 1858. It is mostly suburban along its major highways and rural in the southwestern and northeastern corners.

FOR MORE
INFORMATION
PLEASE
CONTACT

THOMAS A. MILLER
NYS Licensed Associate Real Estate Broker
(518) 462-7491 x 110 office
(518) 495-1000 mobile
Tommy@CarrowRealEstate.com



Adding Value Through Professional Real Estate Services

the information herein has not been verified, and is provided without warranty unless otherwise guaranteed in writing. readers are advised to investigate and verify same prior to entering into a transaction.

**FOR
LEASE**

743 COLUMBIA TURNPIKE

EAST GREENBUSH, NY 12061

PHOTOS



FOR MORE
INFORMATION
PLEASE
CONTACT

THOMAS A. MILLER
NYS Licensed Associate Real Estate Broker
(518) 462-7491 x 110 office
(518) 495-1000 mobile
Tommy@CarrowRealEstate.com



Adding Value Through Professional Real Estate Services

the information herein has not been verified, and is provided without warranty unless otherwise guaranteed in writing. readers are advised to investigate and verify same prior to entering into a transaction.

**FOR
LEASE**

743 COLUMBIA TURNPIKE

EAST GREENBUSH, NY 12061

PHOTOS



FOR MORE
INFORMATION
PLEASE
CONTACT

THOMAS A. MILLER
NYS Licensed Associate Real Estate Broker
(518) 462-7491 x 110 office
(518) 495-1000 mobile
Tommy@CarrowRealEstate.com



Adding Value Through Professional Real Estate Services

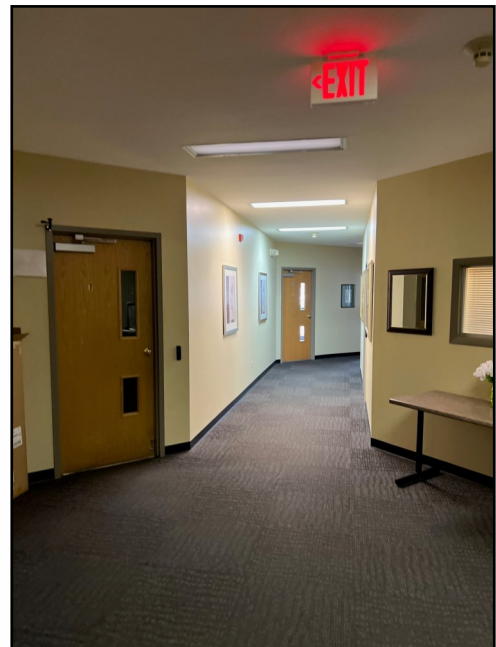
the information herein has not been verified, and is provided without warranty unless otherwise guaranteed in writing. readers are advised to investigate and verify same prior to entering into a transaction.

**FOR
LEASE**

743 COLUMBIA TURNPIKE

EAST GREENBUSH, NY 12061

COMMON
AREA



FOR MORE
INFORMATION
PLEASE
CONTACT

THOMAS A. MILLER
NYS Licensed Associate Real Estate Broker
(518) 462-7491 x 110 office
(518) 495-1000 mobile
Tommy@CarrowRealEstate.com



Adding Value Through Professional Real Estate Services

the information herein has not been verified, and is provided without warranty unless otherwise guaranteed in writing.
readers are advised to investigate and verify same prior to entering into a transaction.

**FOR
LEASE**

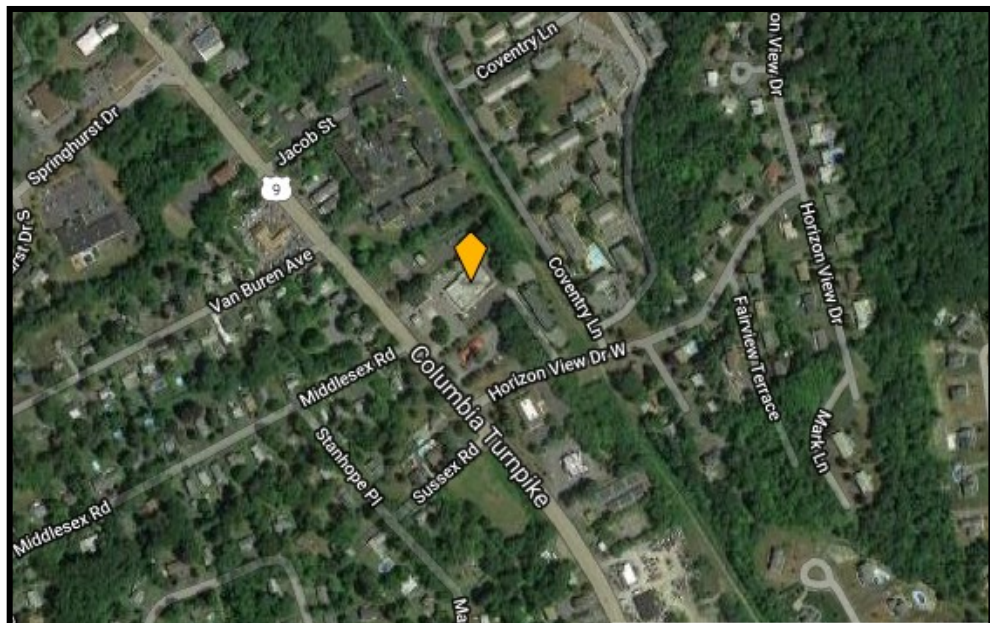
743 COLUMBIA TURNPIKE

EAST GREENBUSH, NY 12061

DEMOGRAPHICS

Population	1 Mile	3 Mile	5 Mile
2019 Total Population:	5,857	16,707	39,488
2024 Population:	6,096	16,972	39,956
Pop Growth 2019-2024:	4.08%	1.59%	1.19%
Average Age:	41.00	42.10	41.00
Households			
2019 Total Households:	2,407	6,821	16,381
HH Growth 2019-2024:	4.20%	1.66%	1.29%
Median Household Inc:	\$93,055	\$86,442	\$73,172
Avg Household Size:	2.40	2.40	2.40
2019 Avg HH Vehicles:	2.00	2.00	2.00
Housing			
Median Home Value:	\$250,537	\$224,401	\$212,838
Median Year Built:	1977	1973	1969

LOCATION



FOR MORE
INFORMATION
PLEASE
CONTACT

THOMAS A. MILLER
NYS Licensed Associate Real Estate Broker
(518) 462-7491 x 110 office
(518) 495-1000 mobile
Tommy@CarrowRealEstate.com



Adding Value Through Professional Real Estate Services

the information herein has not been verified, and is provided without warranty unless otherwise guaranteed in writing. readers are advised to investigate and verify same prior to entering into a transaction.