

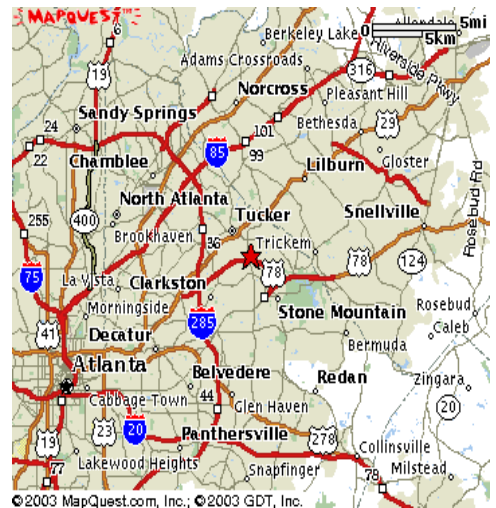
INDUSTRIAL BUILDINGS:
4742, 4744, 4746, 4748 & 4750 Hammermill Road
Tucker, Georgia 30084

FOR LEASE



Hammermill Place

- **1,000 – 2,000 s.f. Warehouse Building**
- **Below Market Price**
- **Park at your Front Door**
- **Drive-In, Drive-Up and Dock Doors**
- **Located at Stone Mountain Freeway and Mountain Industrial Blvd.**
- **Brick Exterior**



For More Information, Contact

Dan Decraene
Advance Realty Service, Inc.

dan1@advance1.com

www.advancerealty.net

Tel. (678) 464-6988 cell

(770) 220-2626 office



Executive Summary

4742-4750 Hammermill Road
Tucker, GA 30084

Land Area	6.17 acres zoned M-1 – light industrial
Building Size	46,000 s.f., 5 one-story warehouse buildings
Building Age	Built in 1984
Parking	146 spaces or 3.17/1000
Lease Term	3 years
Lease Price	\$15.95 - \$16.95 s.f. net of electric and inside maintenance
Warehouse Doors	Dock, Drive-in, Drive-up
Buildout	minimal

Dan Decraene
Advance Realty Service, Inc.
678-464-6988 cell
770-220-2626 office

dan1@advance1.com

www.advancerealty.net

Floor Plan

4742-4750 Hammermill Road
Tucker, GA 30084

Available Space:

<u>Size</u>	<u>Suite</u>	<u>Building</u>	<u>Doors</u>	<u>Available</u>	<u>S.F. Price</u>
2,000 s.f.	403	4742	Dock-high	Now	\$15.95
2,000 s.f.	501	4750	Drive-in	Now	\$15.95

Dan Decraene
Advance Realty Service, Inc.
678-464-6988 cell
770-220-2626 office

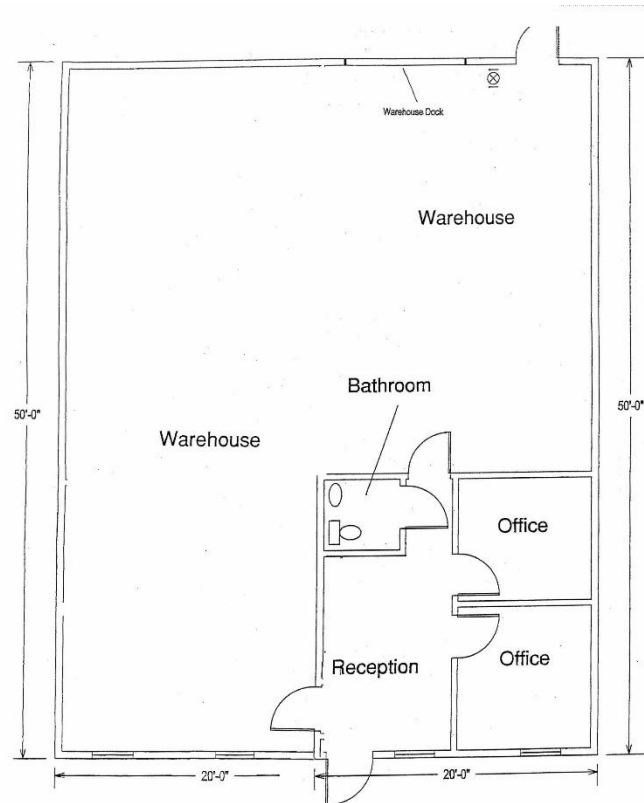
dan1@advance1.com

www.advancerealty.net

Floor Plan

4742 Hammermill Road
Tucker, GA 30084

Suite 403



2,000 s.f.

Dan Decraene
Advance Realty Service, Inc.
678-464-6988 cell
770-220-2626 office

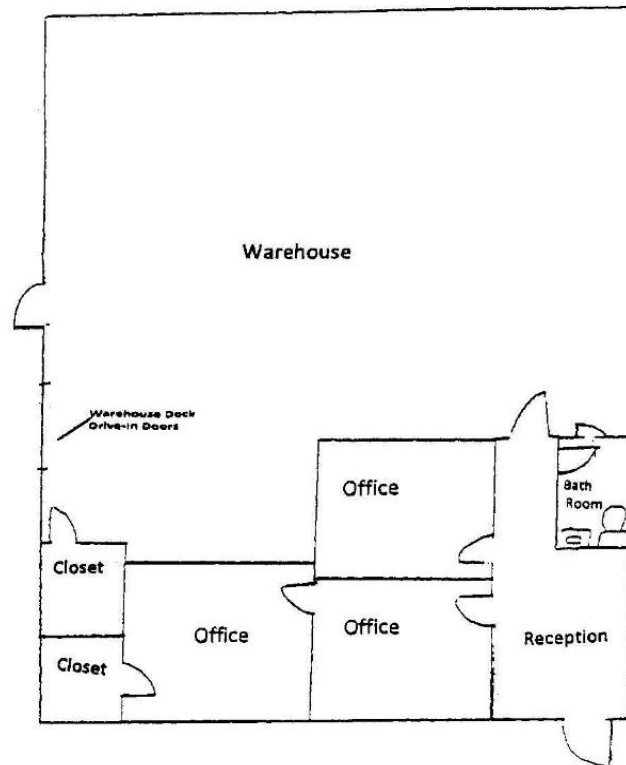
dan1@advance1.com

www.advancerealty.net

Floor Plan

4750 Hammermill Road
Tucker, GA 30084

Suite 501



2,000 s.f.

Dan Decraene

Advance Realty Service, Inc.

678-464-6988 cell

770-220-2626 office

dan1@advance1.com

www.advancerealty.net

Satellite Map

4742-4750 Hammermill Road
Tucker, GA 30084



Dan Decraene
Advance Realty Service, Inc.
678-464-6988 cell
770-220-2626 office

dan1@advance1.com

www.advancerealty.net