



## 3920 Space Drive

Vandalia, Ohio 45414

**LEASE RATE:**  
**\$5.75 PSF NNN**



### Property Highlights

- 71,000± SF Available
- Bay size 14,400 SF (40' x 360')
- Ceiling clearance: min. 21' - 22' bottom of joists
- 277/480 volt power - 3 phase
- 4 Truck docks with 10' x 10' doors with levelers
- One (1) drive-in door (12' x 14')
- Approximately 1,000± SF office with restrooms
- 120' Truck court
- Upgraded sprinkler system
- Abundant employee parking in rear
- Less than 1 mile to I-75 and approximately 3 miles to I-70/I-75 interchange



**Gerry Smith**

Senior Vice President

937.469.8274

Gerry.Smith@ApexCommercialGroup.com

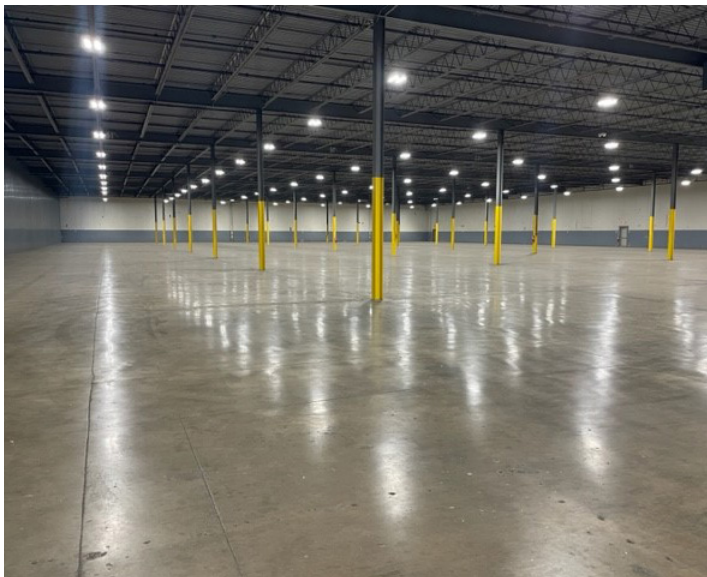
Owned and managed by:



# 3920 Space Drive

Vandalia, Ohio 45414

## Photos



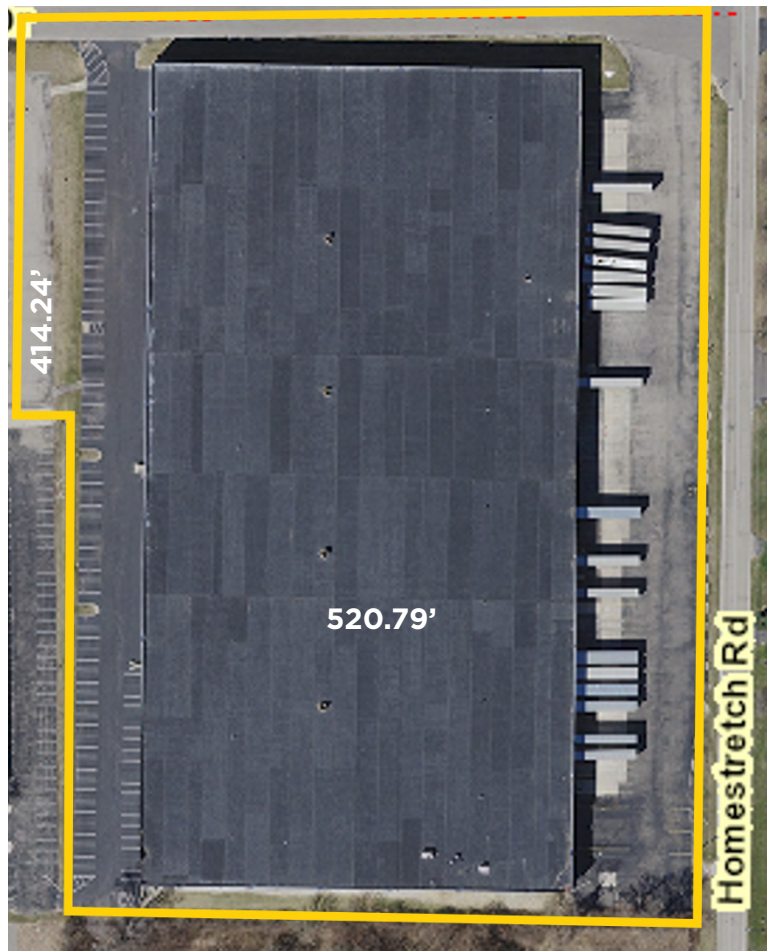
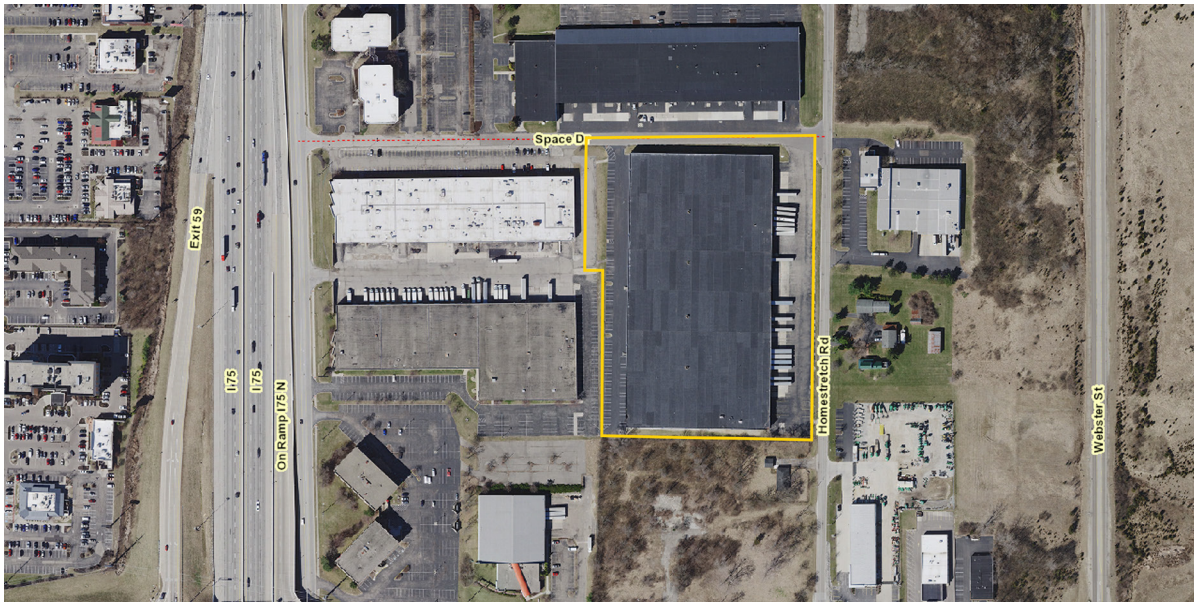
[ApexCommercialGroup.com](http://ApexCommercialGroup.com)



# 3920 Space Drive

Vandalia, Ohio 45414

## Aerial



[ApexCommercialGroup.com](https://www.ApexCommercialGroup.com)

## Floor Plan

