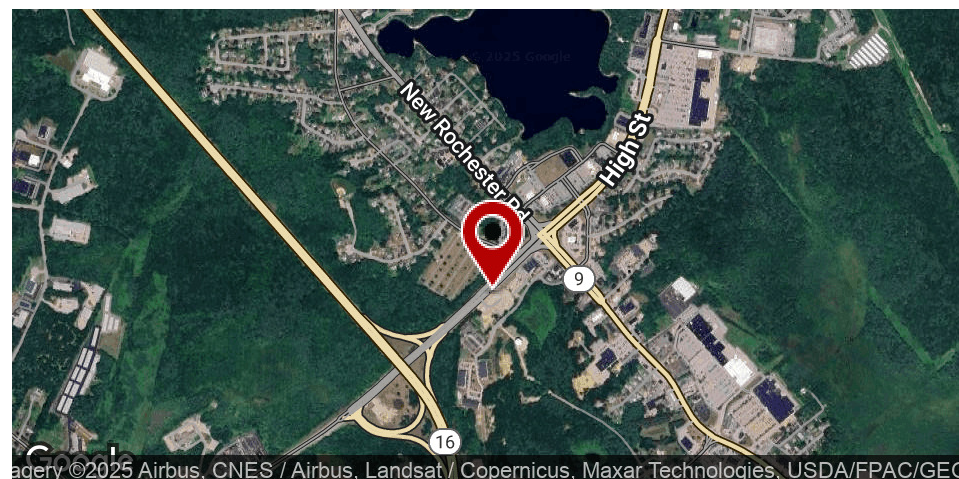


## COMMERCIAL LAND PARCEL FOR SALE

# SUPERIOR LOCATION DEVELOPMENT SITE

0 Indian Brook Rd, Dover, NH 03820



### PROPERTY DESCRIPTION

Introducing a prime commercial investment opportunity for NEW Development! This property, located at 0 Indian Brook Rd, Dover, NH, boasts a highly developable and sought-after commercially zoned site, making it an ideal choice for a range of investment ventures. With the vibrant Dover and Somersworth retail area as its backdrop, this property offers a strategic location for a retail development. Its zoning and locale present an exceptional opportunity for investors seeking a versatile space close to the highway with untapped potential. Embrace the possibilities and envision the future of this desirable property in the thriving commercial sector. Bring your hotel, restaurant, retail strip center, or other commercial business.

### PROPERTY HIGHLIGHTS

- Zoned for commercial use
- Strategic Dover location
- Prime land for business ventures

### OFFERING SUMMARY

Sale Price:	\$3,750,000
Lot Size:	3.11 Acres

DEMOGRAPHICS	1 MILE	3 MILES	5 MILES
Total Households	1,538	15,091	25,904
Total Population	3,644	34,223	59,649
Average HH Income	\$151,706	\$121,600	\$122,455

We obtained the information above from sources we believe to be reliable. However, we have not verified its accuracy and make no guarantee, warranty or representation about it. It is submitted subject to the possibility of errors, omissions, change of price, rental or other conditions, prior sale, lease or financing, or withdrawal without notice. We include projections, opinions, assumptions or estimates for example only, and they may not represent current or future performance of the property. You and your tax and legal advisors should conduct your own investigation of the property and transaction.

**DAVE GARVEY**  
Managing Director  
O: 603.610.8523  
C: 603.491.2854  
dave@kwclcg.com  
NH #004637

**VIKTORIA ALKOVA**  
Commercial Specialist, MiCP  
O: 603.610.8500  
C: 646.577.1194  
viktorija@kwclcg.com  
NH #074657

**ETHAN ASH**  
Commercial & Investment Specialist, MiCP  
O: 603.610.8500 X1430  
C: 603.707.2319  
ethan.ash@kw.com  
NH #071469

**KELLER WILLIAMS COASTAL REALTY**  
603.610.8500  
750 Lafayette Rd.  
Suite 201 - Coastal Land & Commercial Group  
Portsmouth, NH 03801

Each Office Independently Owned and Operated [kwclcg.com](http://kwclcg.com)



## COMMERCIAL LAND PARCEL FOR SALE

# SUPERIOR LOCATION DEVELOPMENT SITE

0 Indian Brook Rd, Dover, NH 03820



We obtained the information above from sources we believe to be reliable. However, we have not verified its accuracy and make no guarantee, warranty or representation about it. It is submitted subject to the possibility of errors, omissions, change of price, rental or other conditions, prior sale, lease or financing, or withdrawal without notice. We include projections, opinions, assumptions or estimates for example only, and they may not represent current or future performance of the property. You and your tax and legal advisors should conduct your own investigation of the property and transaction.

**DAVE GARVEY**  
Managing Director  
O: 603.610.8523  
C: 603.491.2854  
dave@kwclcg.com  
NH #004637

**VIKTORIA ALKOVA**  
Commercial Specialist, MiCP  
O: 603.610.8500  
C: 646.577.1194  
viktorija@kwclcg.com  
NH #074657

**ETHAN ASH**  
Commercial & Investment Specialist, MiCP  
O: 603.610.8500 X1430  
C: 603.707.2319  
ethan.ash@kw.com  
NH #071469

**KELLER WILLIAMS COASTAL REALTY**  
603.610.8500  
750 Lafayette Rd.  
Suite 201 - Coastal Land & Commercial Group  
Portsmouth, NH 03801

Each Office Independently Owned and Operated **kwclcg.com**



## COMMERCIAL LAND PARCEL FOR SALE

# SUPERIOR LOCATION DEVELOPMENT SITE

0 Indian Brook Rd, Dover, NH 03820



We obtained the information above from sources we believe to be reliable. However, we have not verified its accuracy and make no guarantee, warranty or representation about it. It is submitted subject to the possibility of errors, omissions, change of price, rental or other conditions, prior sale, lease or financing, or withdrawal without notice. We include projections, opinions, assumptions or estimates for example only, and they may not represent current or future performance of the property. You and your tax and legal advisors should conduct your own investigation of the property and transaction.

**DAVE GARVEY**  
Managing Director  
O: 603.610.8523  
C: 603.491.2854  
dave@kwclcg.com  
NH #004637

**VIKTORIA ALKOVA**  
Commercial Specialist, MiCP  
O: 603.610.8500  
C: 646.577.1194  
viktorija@kwclcg.com  
NH #074657

**ETHAN ASH**  
Commercial & Investment Specialist, MiCP  
O: 603.610.8500 X1430  
C: 603.707.2319  
ethan.ash@kw.com  
NH #071469

**KELLER WILLIAMS COASTAL REALTY**  
603.610.8500  
750 Lafayette Rd.  
Suite 201 - Coastal Land & Commercial Group  
Portsmouth, NH 03801

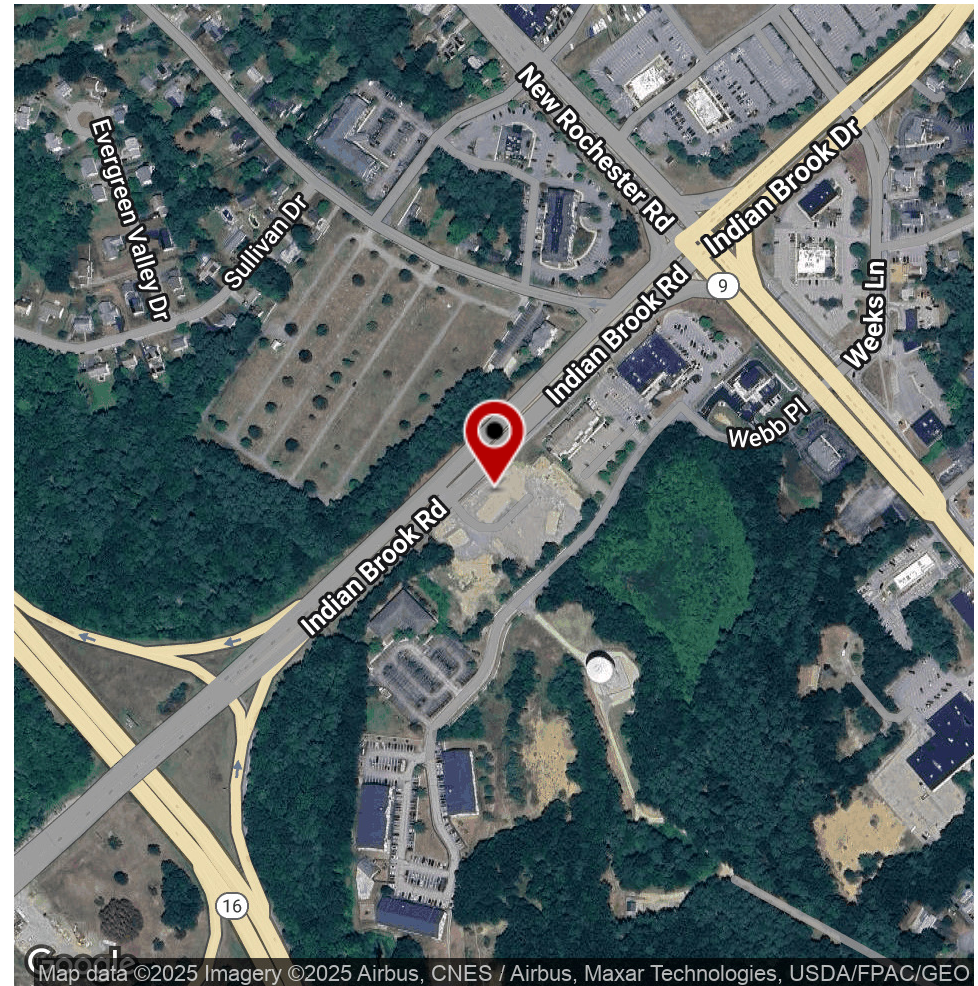
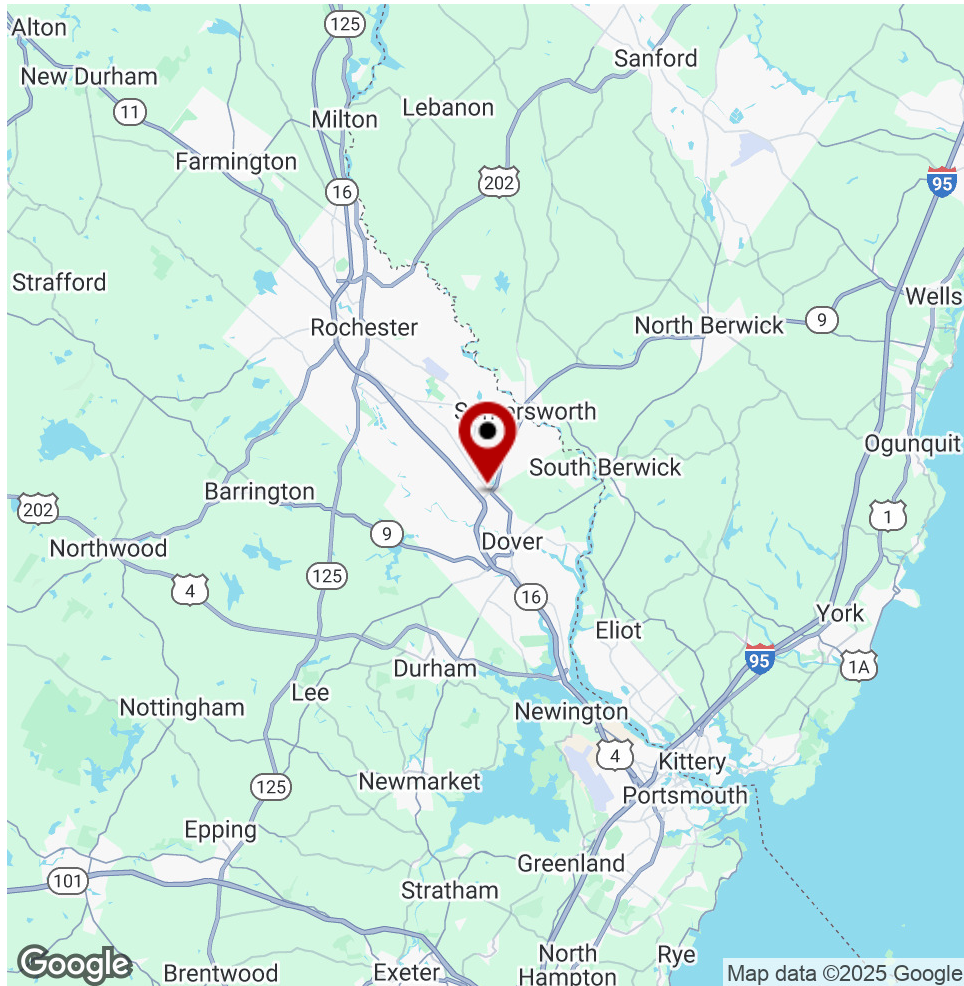
Each Office Independently Owned and Operated [kwclcg.com](http://kwclcg.com)



## COMMERCIAL LAND PARCEL FOR SALE

# SUPERIOR LOCATION DEVELOPMENT SITE

0 Indian Brook Rd, Dover, NH 03820



We obtained the information above from sources we believe to be reliable. However, we have not verified its accuracy and make no guarantee, warranty or representation about it. It is submitted subject to the possibility of errors, omissions, change of price, rental or other conditions, prior sale, lease or financing, or withdrawal without notice. We include projections, opinions, assumptions or estimates for example only, and they may not represent current or future performance of the property. You and your tax and legal advisors should conduct your own investigation of the property and transaction.

**DAVE GARVEY**  
Managing Director  
O: 603.610.8523  
C: 603.491.2854  
dave@kwclcg.com  
NH #004637

**VIKTORIA ALKOVA**  
Commercial Specialist, MiCP  
O: 603.610.8500  
C: 646.577.1194  
viktoria@kwclcg.com  
NH #074657

**ETHAN ASH**  
Commercial & Investment Specialist, MiCP  
O: 603.610.8500 X1430  
C: 603.707.2319  
ethan.ash@kw.com  
NH #071469

**KELLER WILLIAMS COASTAL REALTY**  
603.610.8500  
750 Lafayette Rd.  
Suite 201 - Coastal Land & Commercial Group  
Portsmouth, NH 03801

Each Office Independently Owned and Operated [kwclcg.com](http://kwclcg.com)



## COMMERCIAL LAND PARCEL FOR SALE

# SUPERIOR LOCATION DEVELOPMENT SITE

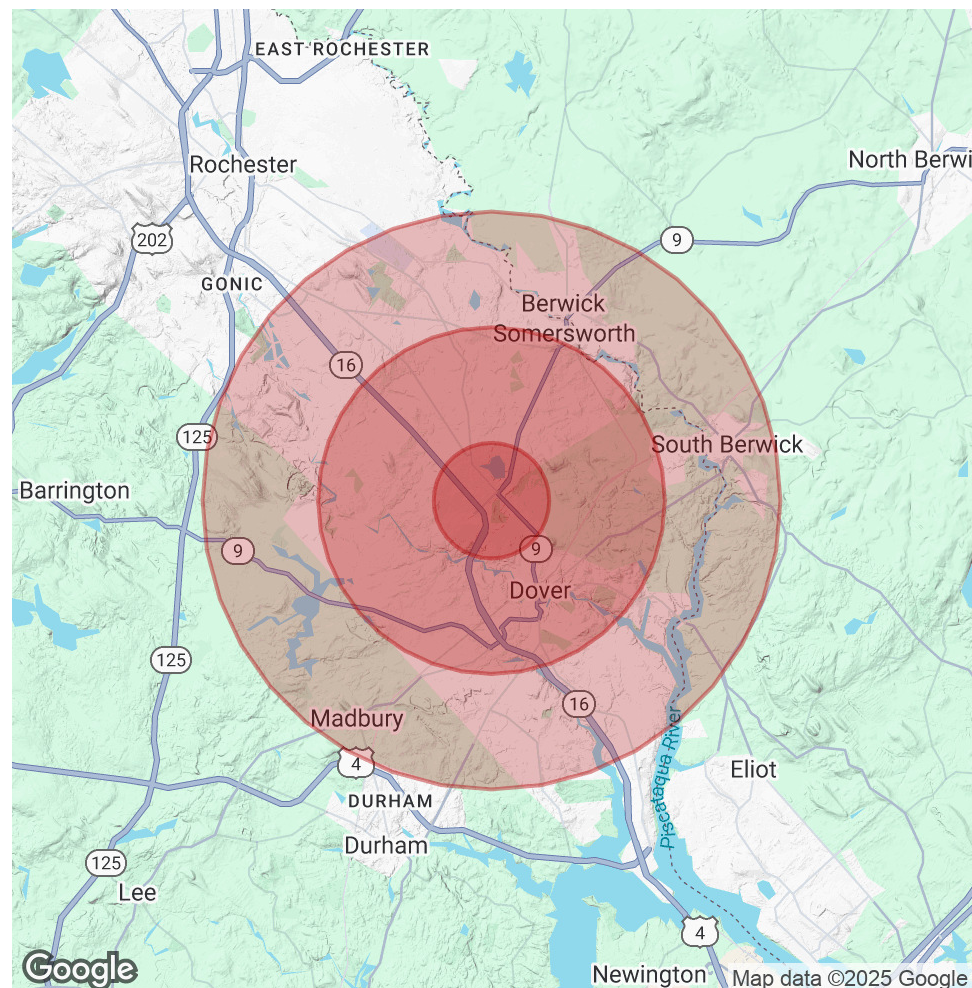
0 Indian Brook Rd, Dover, NH 03820



POPULATION	1 MILE	3 MILES	5 MILES
Total Population	3,644	34,223	59,649
Average Age	41	40	42
Average Age (Male)	40	39	40
Average Age (Female)	43	42	43

HOUSEHOLDS & INCOME	1 MILE	3 MILES	5 MILES
Total Households	1,538	15,091	25,904
# of Persons per HH	2.4	2.3	2.3
Average HH Income	\$151,706	\$121,600	\$122,455
Average House Value	\$423,220	\$442,659	\$432,225

Demographics data derived from AlphaMap



We obtained the information above from sources we believe to be reliable. However, we have not verified its accuracy and make no guarantee, warranty or representation about it. It is submitted subject to the possibility of errors, omissions, change of price, rental or other conditions, prior sale, lease or financing, or withdrawal without notice. We include projections, opinions, assumptions or estimates for example only, and they may not represent current or future performance of the property. You and your tax and legal advisors should conduct your own investigation of the property and transaction.

**DAVE GARVEY**  
Managing Director  
O: 603.610.8523  
C: 603.491.2854  
dave@kwclcg.com  
NH #004637

**VIKTORIA ALKOVA**  
Commercial Specialist, MiCP  
O: 603.610.8500  
C: 646.577.1194  
viktorija@kwclcg.com  
NH #074657

**ETHAN ASH**  
Commercial & Investment Specialist, MiCP  
O: 603.610.8500 X1430  
C: 603.707.2319  
ethan.ash@kw.com  
NH #071469

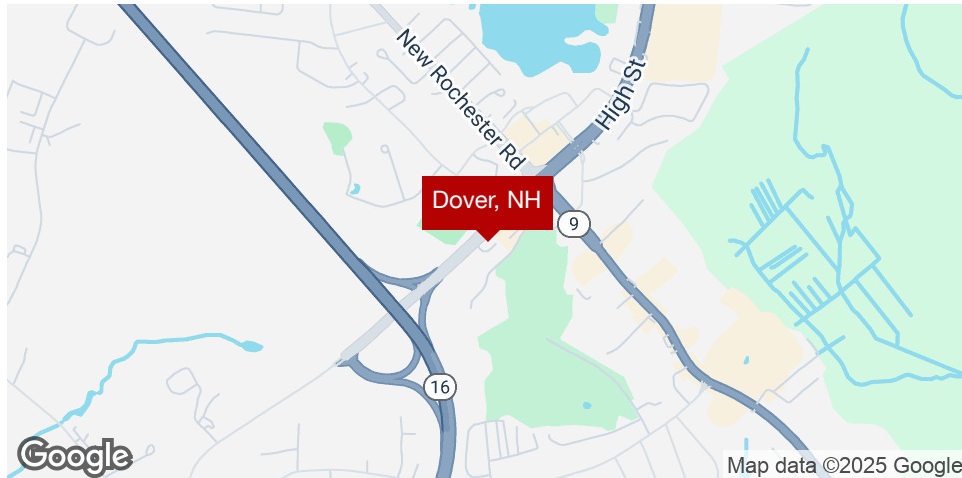
**KELLER WILLIAMS COASTAL REALTY**  
603.610.8500  
750 Lafayette Rd.  
Suite 201 - Coastal Land & Commercial Group  
Portsmouth, NH 03801

Each Office Independently Owned and Operated [kwclcg.com](http://kwclcg.com)



# SUPERIOR LOCATION DEVELOPMENT SITE

0 Indian Brook Rd, Dover, NH 03820



### LOCATION DESCRIPTION

Introducing a prime commercial investment opportunity for NEW Development! This property, located at 0 Indian Brook Rd, Dover, NH, boasts a highly developable and sought-after commercially zoned site, making it an ideal choice for a range of investment ventures. With the vibrant Dover and Somersworth retail area as its backdrop, this property offers a strategic location for a retail development. Its zoning and locale present an exceptional opportunity for investors seeking a versatile space close to the highway with untapped potential. Embrace the possibilities and envision the future of this desirable property in the thriving commercial sector. Bring your hotel, restaurant, retail strip center, or other commercial business.

### LOCATION DETAILS

County	Strafford
Street Parking	No
Signal Intersection	No
Road Type	Highway
Market Type	Medium
Nearest Highway	Spaulding Turnpike
Nearest Airport	Pease International Airport

We obtained the information above from sources we believe to be reliable. However, we have not verified its accuracy and make no guarantee, warranty or representation about it. It is submitted subject to the possibility of errors, omissions, change of price, rental or other conditions, prior sale, lease or financing, or withdrawal without notice. We include projections, opinions, assumptions or estimates for example only, and they may not represent current or future performance of the property. You and your tax and legal advisors should conduct your own investigation of the property and transaction.

**DAVE GARVEY**  
Managing Director  
O: 603.610.8523  
C: 603.491.2854  
dave@kwclcg.com  
NH #004637

**VIKTORIA ALKOVA**  
Commercial Specialist, MiCP  
O: 603.610.8500  
C: 646.577.1194  
viktorija@kwclcg.com  
NH #074657

**ETHAN ASH**  
Commercial & Investment Specialist, MiCP  
O: 603.610.8500 X1430  
C: 603.707.2319  
ethan.ash@kw.com  
NH #071469

**KELLER WILLIAMS COASTAL REALTY**  
603.610.8500  
750 Lafayette Rd.  
Suite 201 - Coastal Land & Commercial Group  
Portsmouth, NH 03801



Target Market Summary

15 Webb Pl, Dover, New Hampshire, 03820 3 (5 miles)

15 Webb Pl, Dover, New Hampshire, 03820

Ring of 5 miles

Prepared by Esri and Lisa

Latitude: 43.22147

Longitude: -70.88857

TARGET MARKET SUMMARY

15 Webb Pl, Dover, New Hampshire, 03820 3

Ring of 5 miles

Key Facts

60,127

Population

40.2

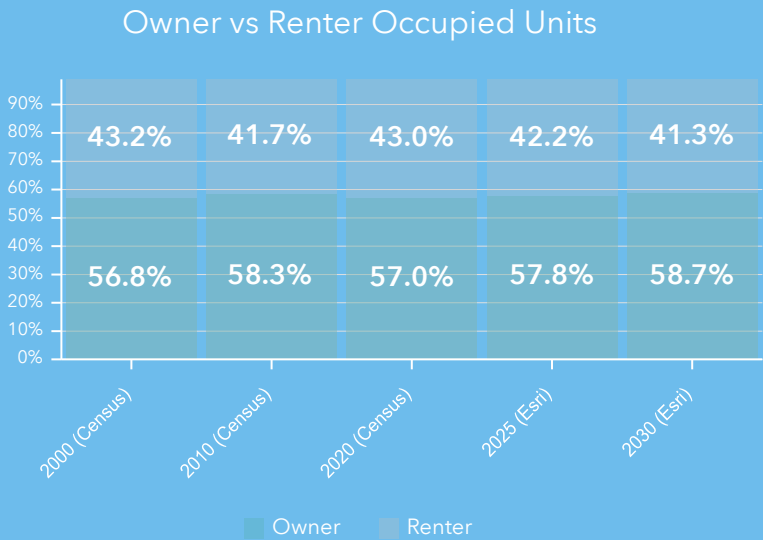
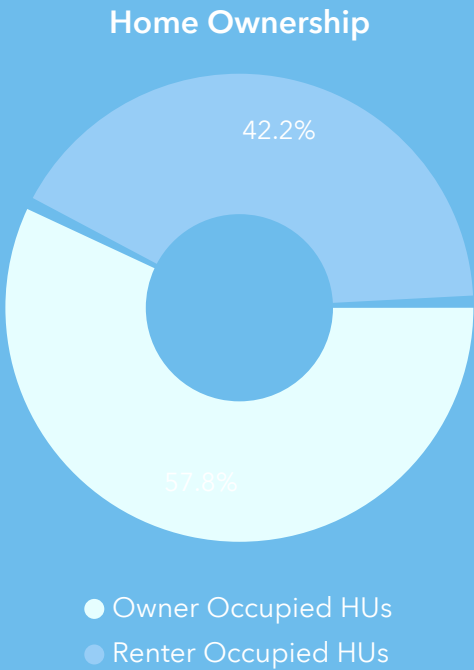
Median Age

2.2

Average Household Size

\$93,518

Median Household Income



Annual Lifestyle Spending

✈️

\$3,580

Travel

🎫

\$117

Theatre/Operas/Concerts

⚽

\$79

Movies/Museums/ Parks

👤⚽

\$95

Sports Events

🎮

\$10

Online Games

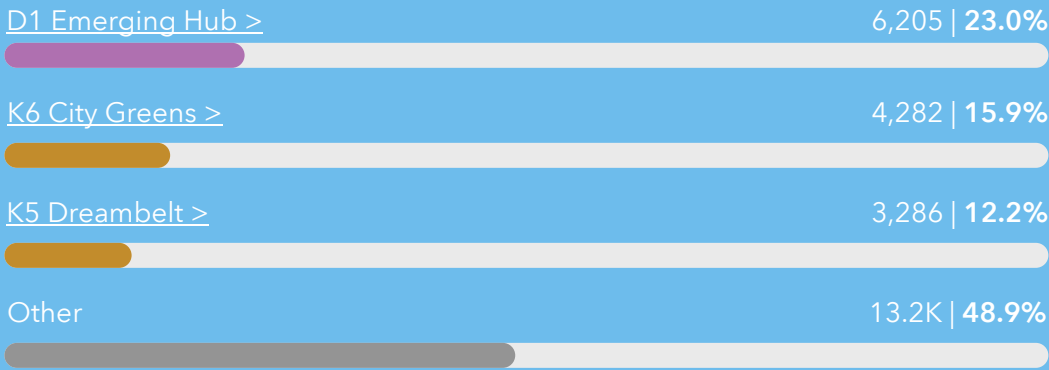
🎧

\$141

Audio

Tapestry

Top 3 segments by household count



Source: This infographic contains data provided by Esri (2025, 2030), Esri-U.S. BLS (2025), Esri-MRI-Simmons (2025), U.S. Census (2000, 2010, 2020).

© 2025 Esri