



6 Greene St

6 Greene St, New York, NY 10013

BY **ora**



Kyle Manning

6 Greene Realty

6 Greene St, New York, NY 10013

kyle@by-ora.com

(443) 528-3004

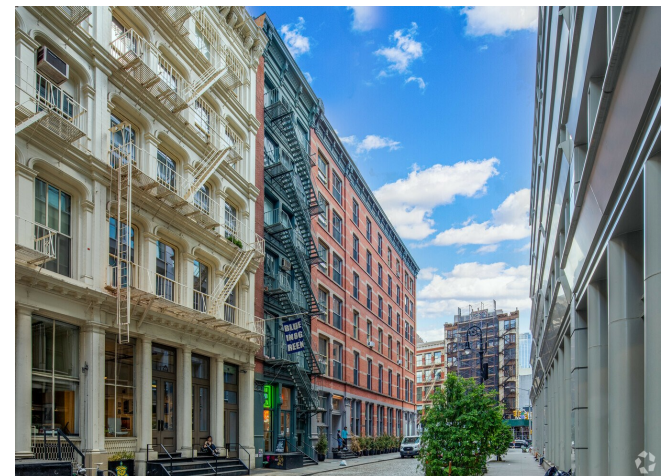


6 Greene St

Upon Request

6 Greene Street is a boutique office building in New York City's SOHO neighborhood. The six-story property contains 33,374 SF and sits at the intersection of Canal and Greene streets. It is completely renovated. Experience capital upgrades to the building's lobby, elevator, roof, HVAC, plumbing, and electrical systems.

Immediately available brand-new work areas are fully wired with FFE included. Private offices have removable walls, and some private offices can be combined to accommodate larger users. Base rent includes electric, HVAC, utilities, CAM, RE taxes, cleaning, internet/Wi-Fi connectivity, printing/copying, and employee desks and chairs. Suites receive ample natural light throughout the workday through an expansive window line. Enjoy interior details such as hardwood floors, exposed brick walls, and up to 13-foot-high unfinished ceilings....



Rental Rate: Upon Request

Property Type: Office

Property Subtype: Office/Residential

Building Class: A

Rentable Building Area: 36,298 SF

Year Built: 2020

Walk Score ®: 100 (Walker's Paradise)

Transit Score ®: 100 (Rider's Paradise)

Rental Rate Mo: Upon Request

5th Floor Ste 501

Space Available	3,911 SF
Rental Rate	Upon Request
Date Available	Now
Service Type	Negotiable
Space Type	Relet
Space Use	Office
Lease Term	1 - 5 Years

TURN KEY SOLUTION: MOVE IN TOMORROW AND START WORKING IMMEDIATELY. This unit is in the backleft of the floor - the floor is shared with one other company. Kitchen, common area, and bathrooms are shared with the other company. Rent includes: Electric, HVAC, CAM, RE taxes, cleaning, fiber internet, wifi networking, printing, copying, desks, chairs BRAND NEW Pantry, bathrooms, office partitions, flooring, HVAC, electric, elevators, lobby

6th Floor Ste 600

Space Available	2,280 SF
Rental Rate	Upon Request
Date Available	Now
Service Type	Negotiable
Space Type	Relet
Space Use	Office
Lease Term	1 - 5 Years

TURN KEY SOLUTION: MOVE IN TOMORROW AND START WORKING IMMEDIATELY Rent includes: Electric, HVAC, CAM, RE taxes, cleaning, fiber internet, wifi networking, printing, copying, desks, chairs BRAND NEW Pantry, bathrooms, office partitions, flooring, HVAC, electric, elevators, lobby

6th Floor Ste 601

Space Available	1,538 SF
Rental Rate	Upon Request
Date Available	Now
Service Type	Negotiable
Space Type	Relet
Space Use	Office
Lease Term	1 - 5 Years

TURNKEY SOLUTION: MOVE IN AND START WORKING IMMEDIATELY. Base rent includes: electric, HVAC, utilities, CAM, RE taxes, cleaning, internet, printing, copying, wifi network, and 24-hour access to the building. This property is fully renovated with brand new elevator, roof work, lobby, HVAC, electrical, and plumbing systems.

Major Tenant Information

Tenant	SF Occupied	Lease Expired
6 Greene Realty	-	



6 Greene St, New York, NY 10013

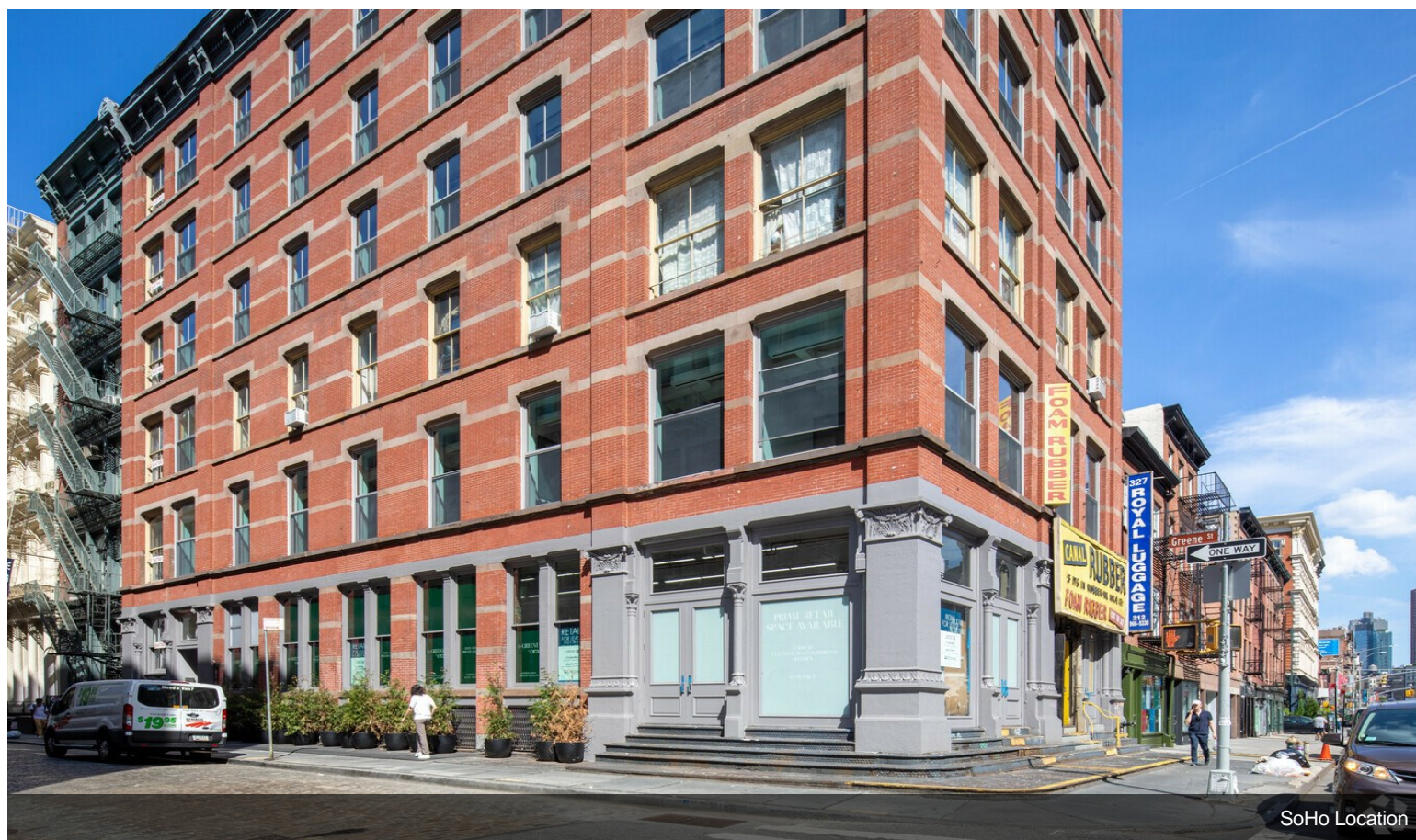
6 Greene Street is a boutique office building in New York City's SOHO neighborhood. The six-story property contains 33,374 SF and sits at the intersection of Canal and Greene streets. It is completely renovated. Experience capital upgrades to the building's lobby, elevator, roof, HVAC, plumbing, and electrical systems.

Immediately available brand-new work areas are fully wired with FFE included. Private offices have removable walls, and some private offices can be combined to accommodate larger users. Base rent includes electric, HVAC, utilities, CAM, RE taxes, cleaning, internet/Wi-Fi connectivity, printing/copying, and employee desks and chairs. Suites receive ample natural light throughout the workday through an expansive window line. Enjoy interior details such as hardwood floors, exposed brick walls, and up to 13-foot-high unfinished ceilings.

Property Photos



Entrance



SoHo Location

Property Photos



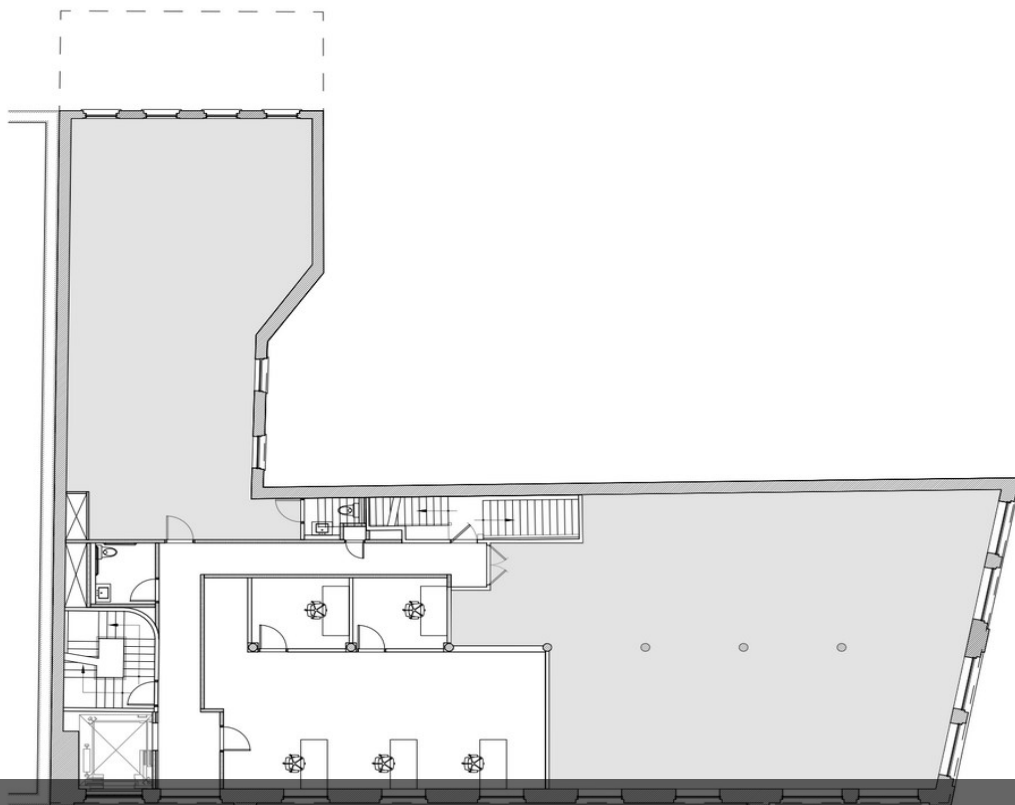
Building Lobby



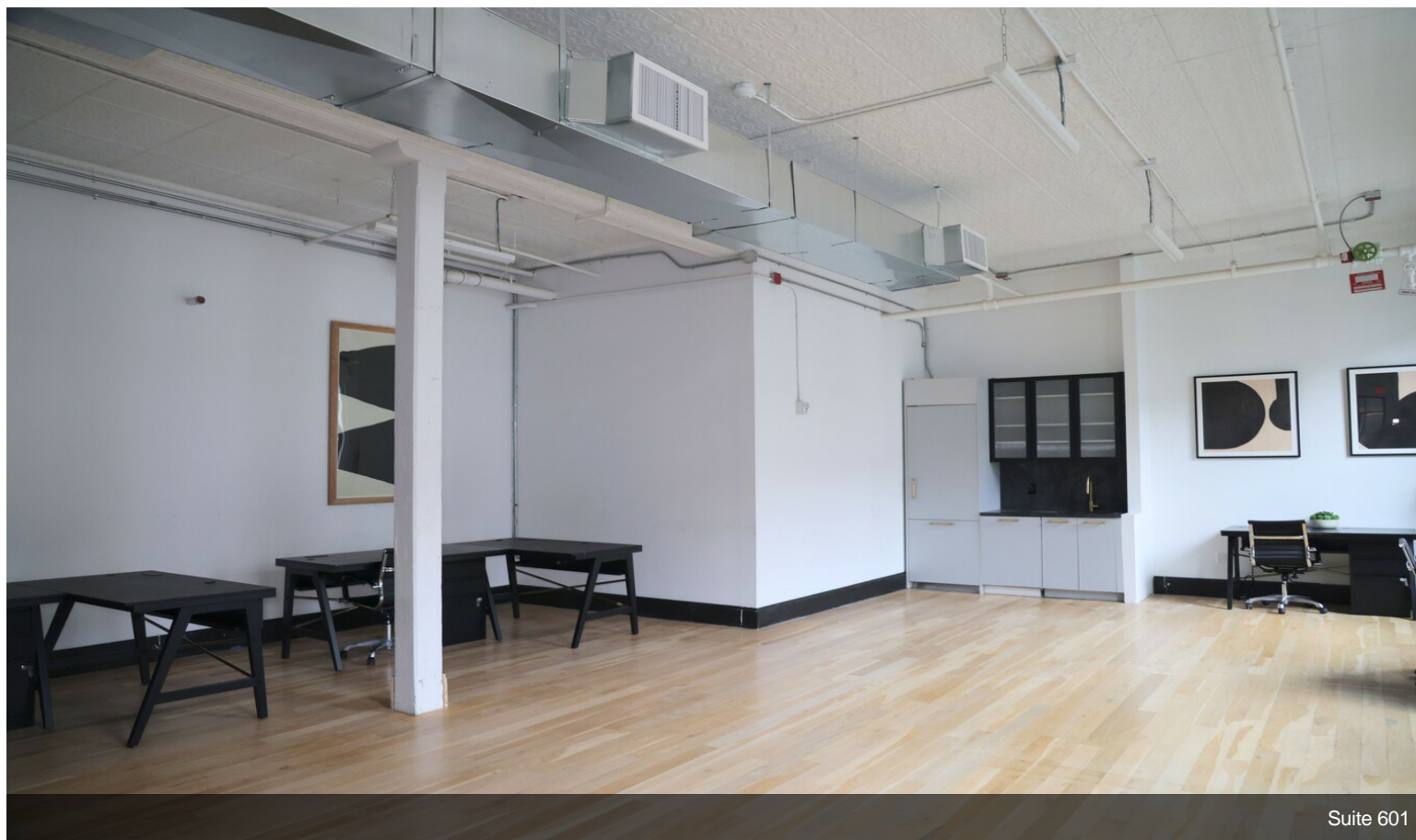
Lobby Elevator

Property Photos

6th Floor Suite 601
1,538 RSF

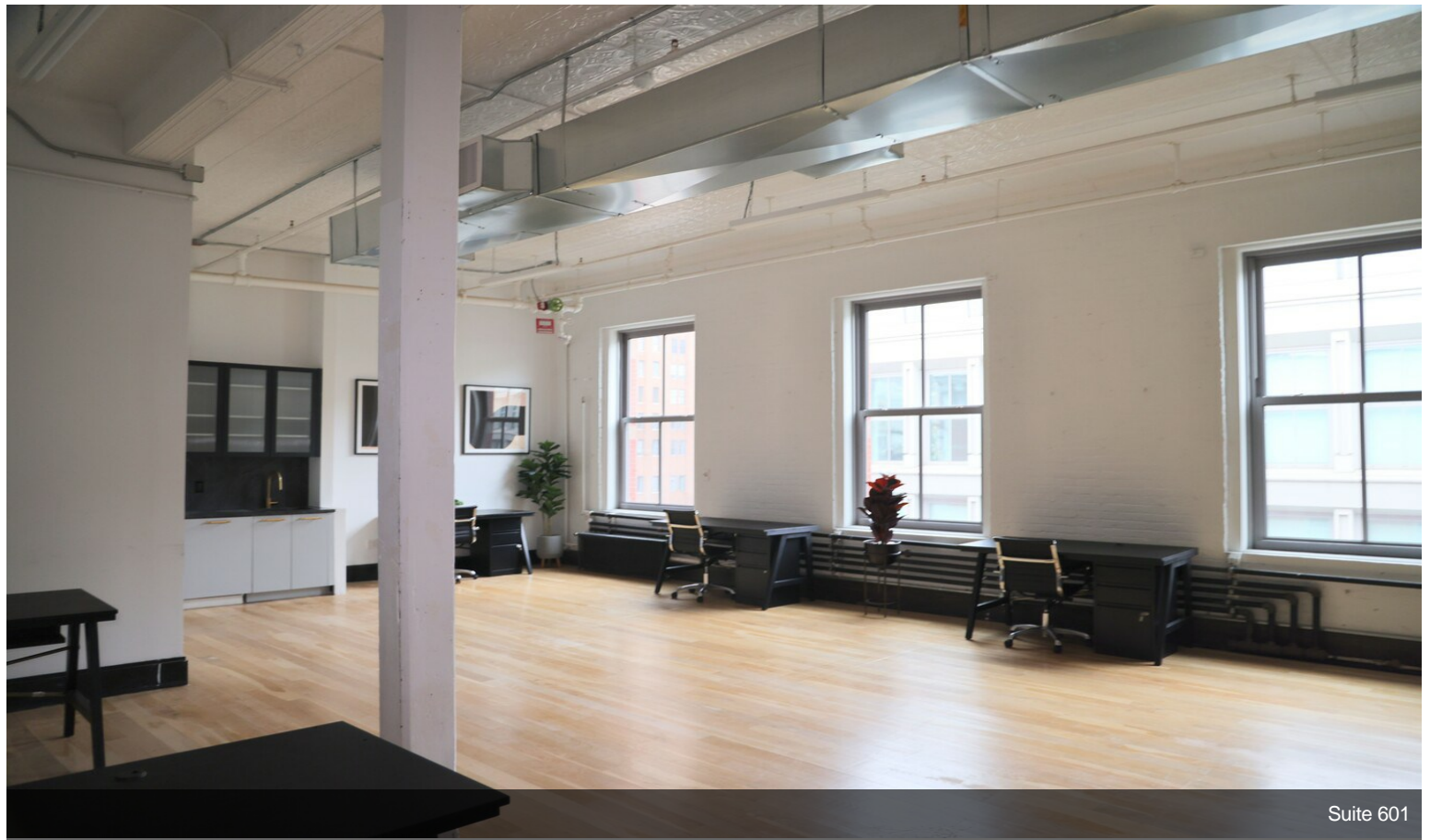


Suite 601 Floor Plan

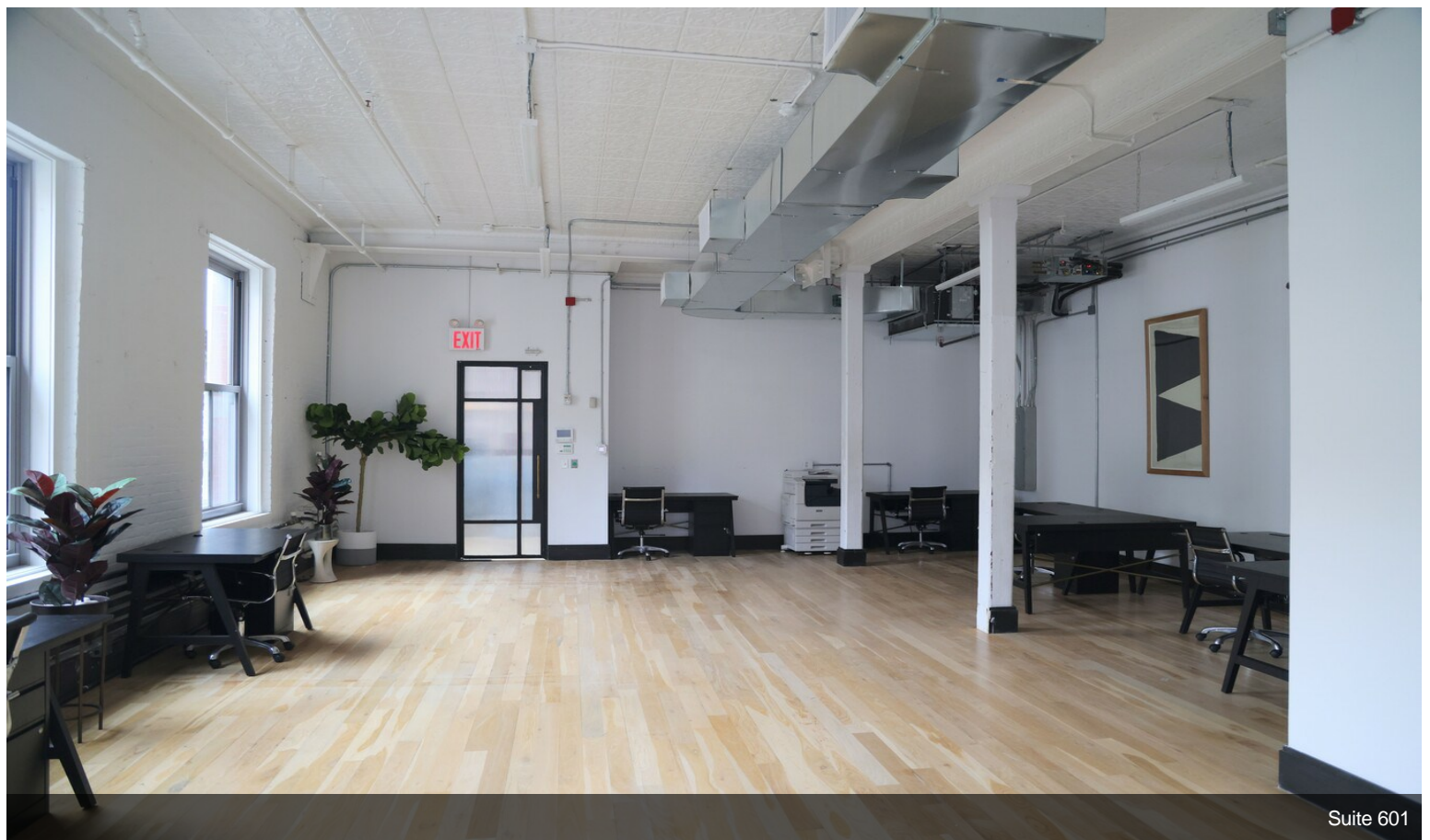


Suite 601

Property Photos

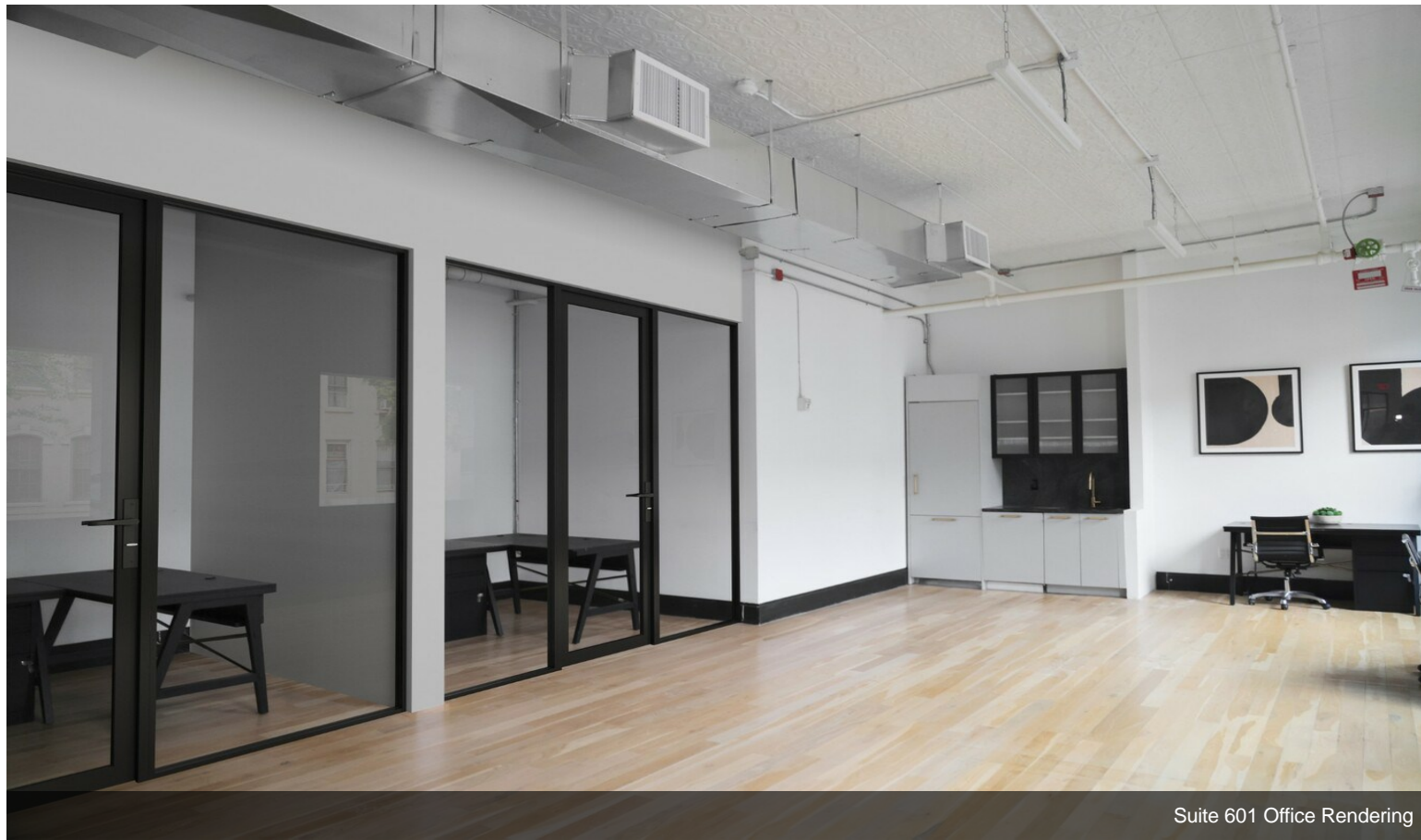


Suite 601

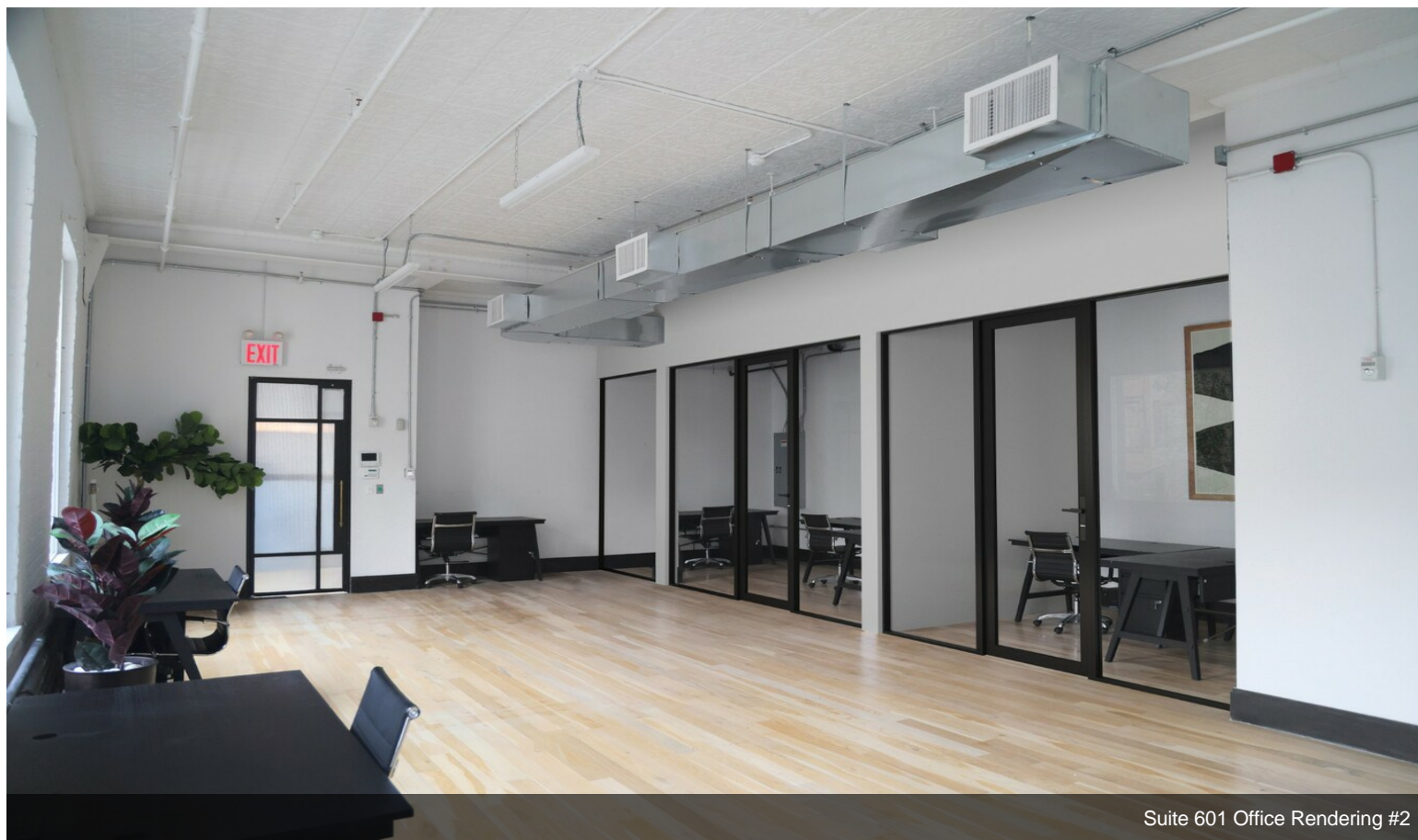


Suite 601

Property Photos



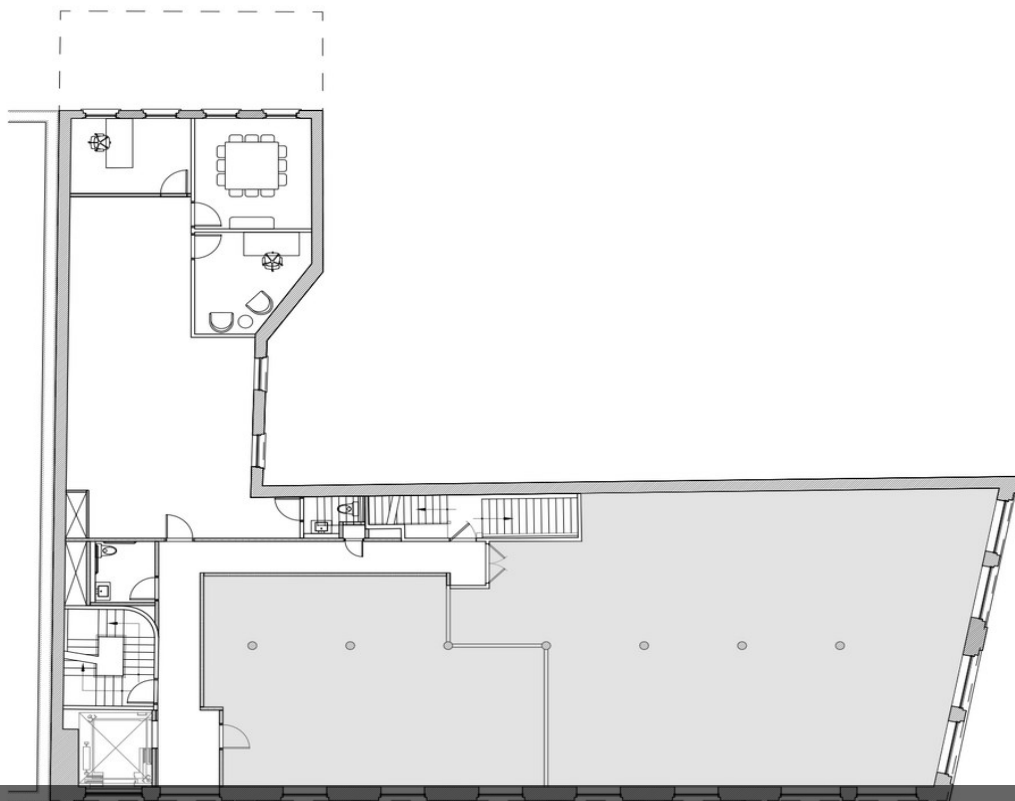
Suite 601 Office Rendering



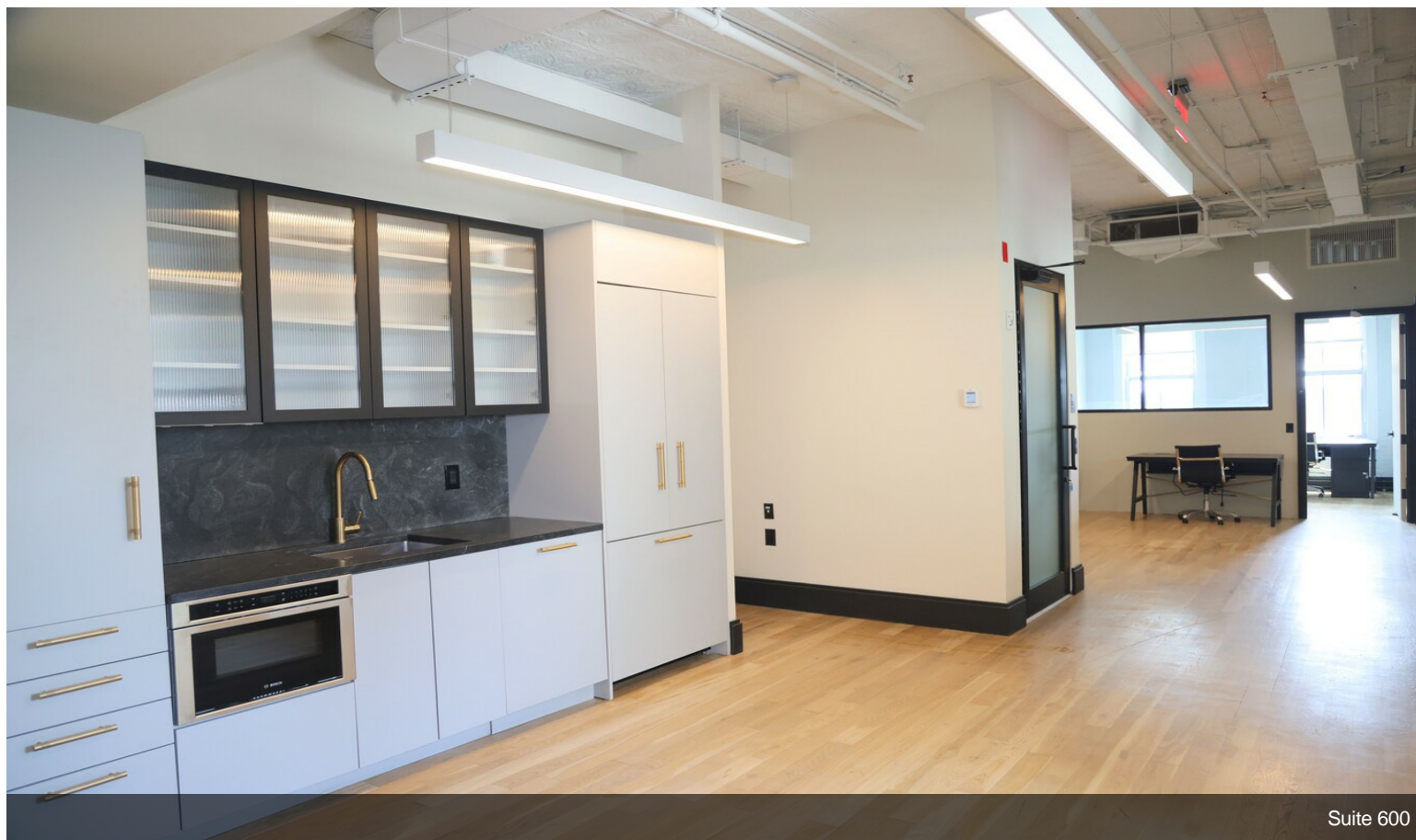
Suite 601 Office Rendering #2

Property Photos

6th Floor Suite 600
2,280 RSF

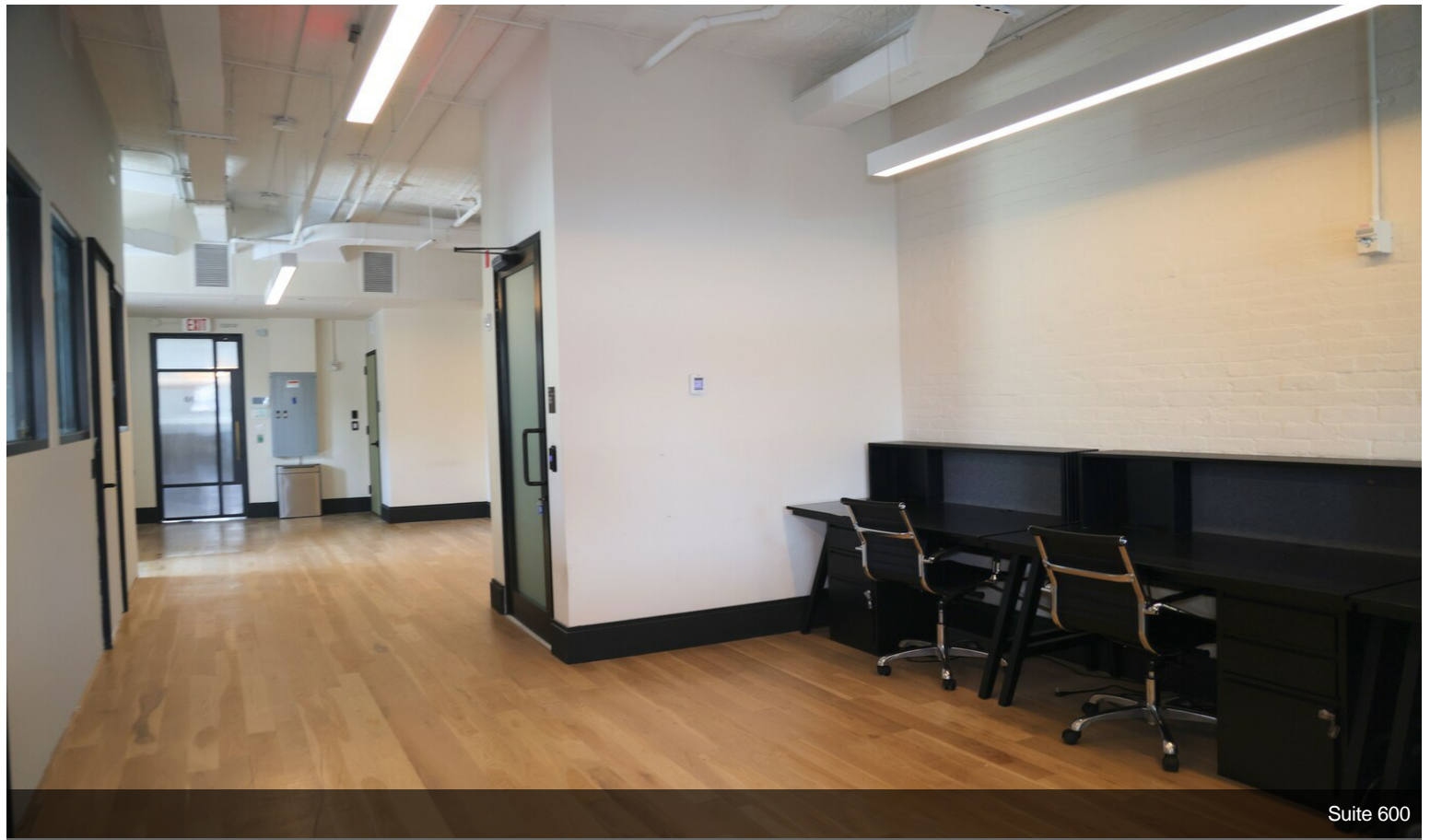


Suite 600 Floor Plan



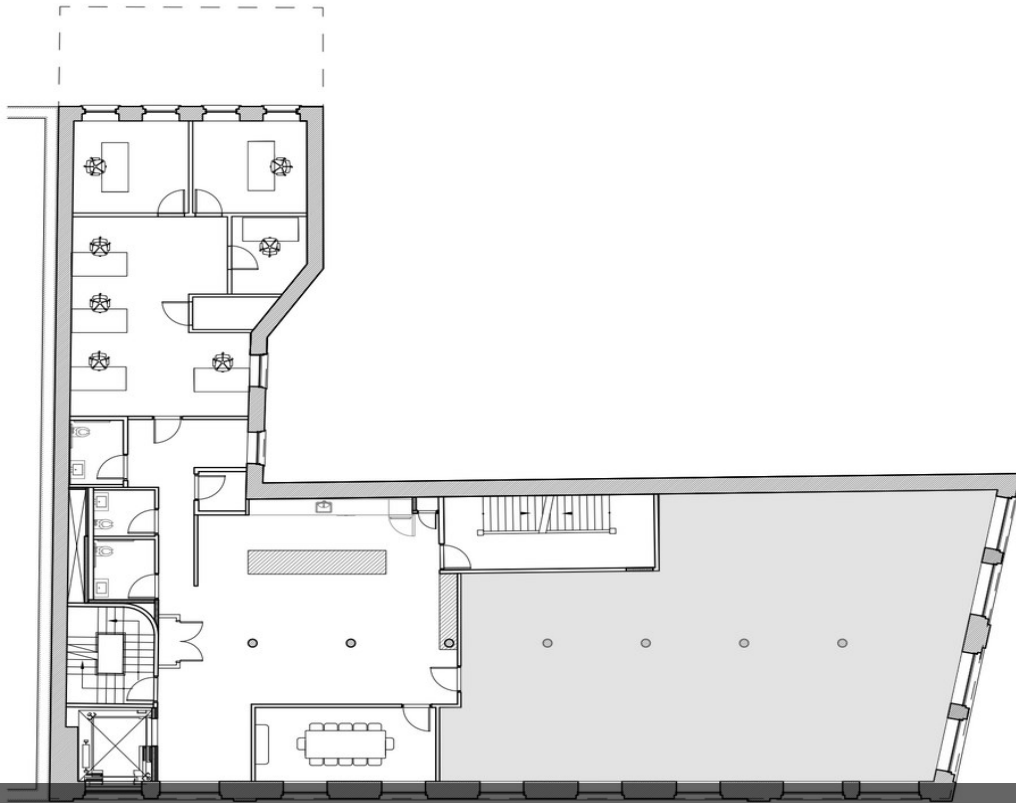
Suite 600

Property Photos

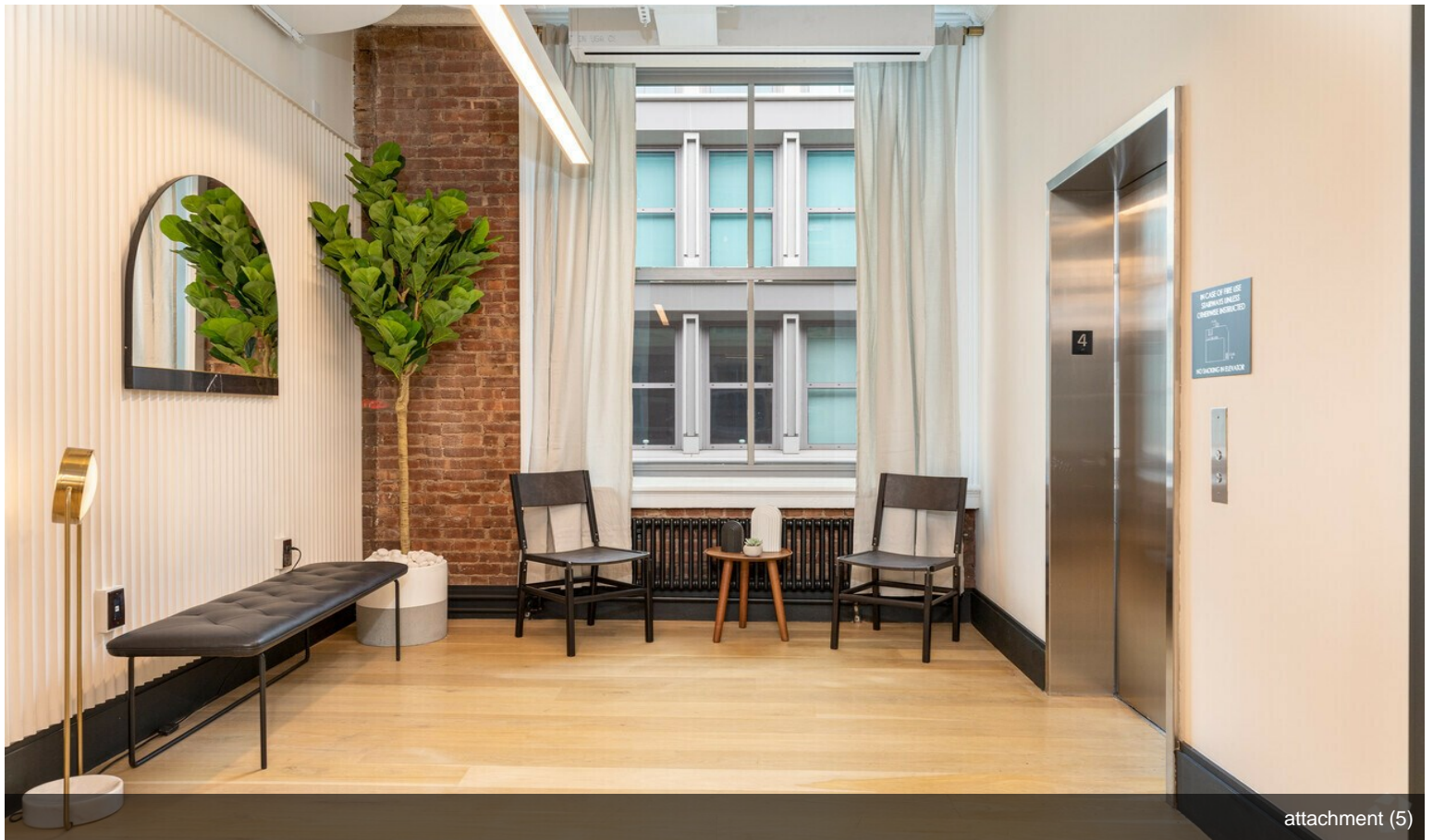


Property Photos

5th Floor Suite 501
3,911 RSF

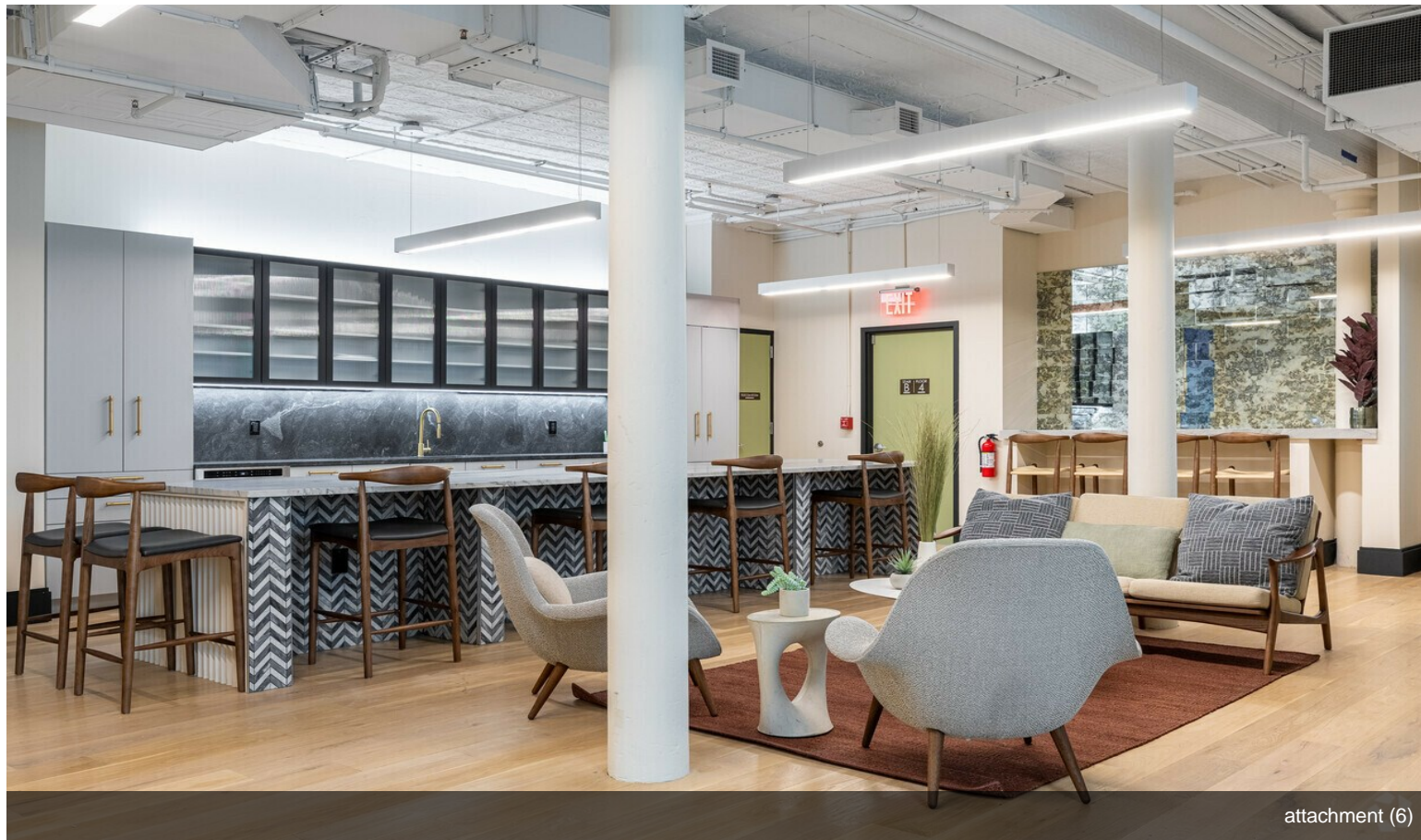


Suite 501 Floor Plan

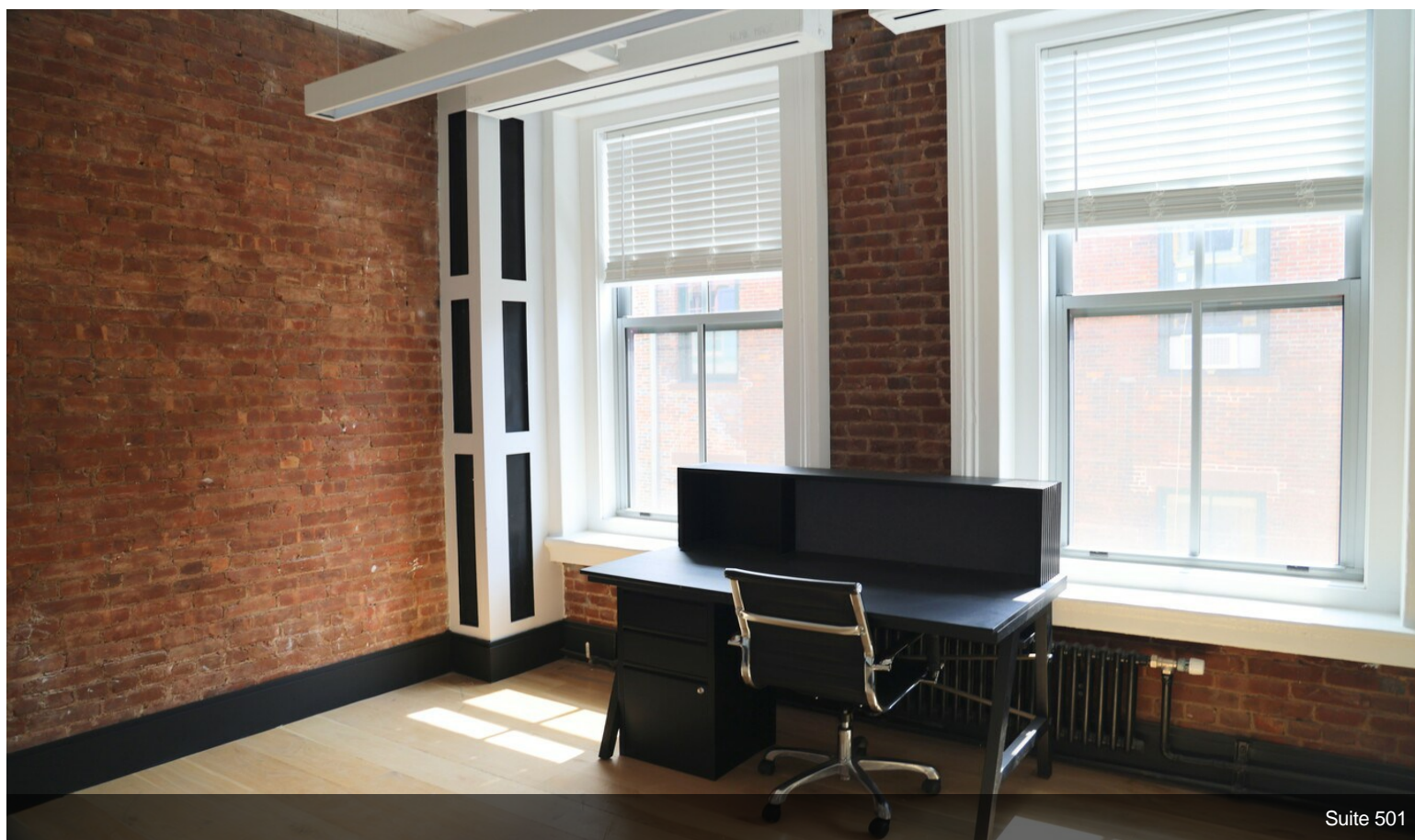


attachment (5)

Property Photos



attachment (6)



Suite 501

Property Photos

