

FOR LEASE | 1901 OLYMPIC BLVD

OFFICE SPACES IN WALNUT CREEK



Clayton Temple
Sales & Leasing Associate

925.296.3311

clayton.temple@tricommercial.com

LIC: #02006440



1901 OLYMPIC BLVD

OFFICE SPACE AVAILABLE
JUST OFF I-680 IN WALNUT CREEK

- Parking - 3 spaces / 1,000 sf
- Convenient access to freeway
- High visibility location
- Within walking distance to numerous retail and restaurant amenities in Downtown Walnut Creek
- 1901 Olympic Blvd. is a 23,000 square foot, three story office building located directly off the Interstate 680 Olympic Blvd. exit. This desirable location offers high visibility and convenient access from Highway 24 and Interstate 680. There are multitude of retail and restaurant amenities within walking distance including the newly developed Plaza Escuela Center, Broadway Plaza and Olympic Place.
- **Lease Rate: \$2.25/mo Full Service**



Demographics	1 Mi	2 Mi	3 Mi
Households	6,731	23,376	45,283
Population	14,287	48,868	96,313
Avg HH Income	\$95,546	\$102,891	\$107,102

Clayton Temple

925.296.3311

clayton.temple@tricommercial.com

LIC: #02006440

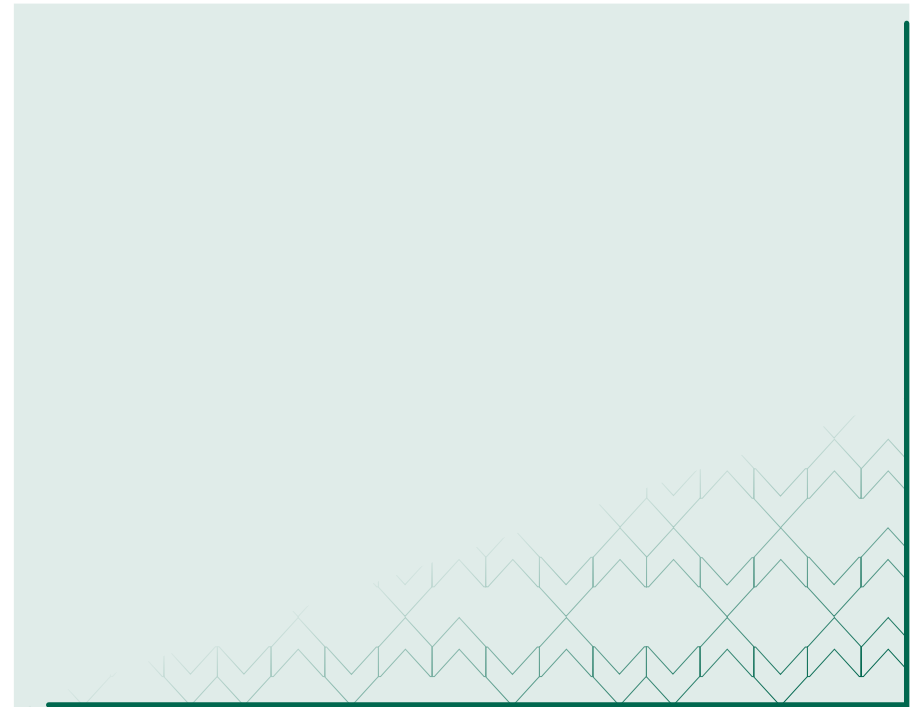
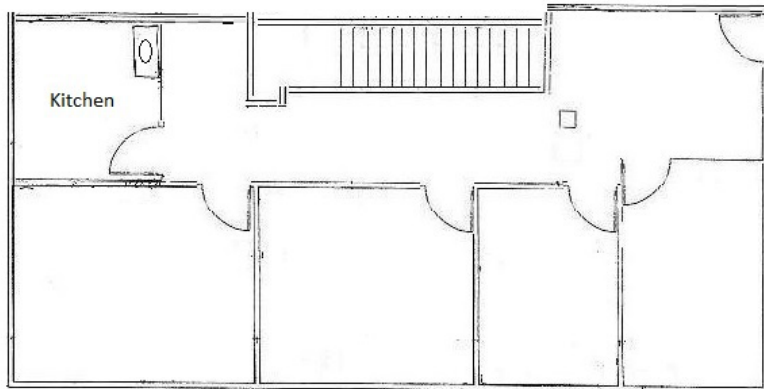


www.tricommercial.com

1901 OLYMPIC BLVD

OFFICE SPACE AVAILABLE
JUST OFF I-680 IN WALNUT CREEK

1901 Olympic Blvd ~ Suite 220
1,373 Rentable Square Feet



Clayton Temple

925.296.3311

clayton.temple@tricommercial.com

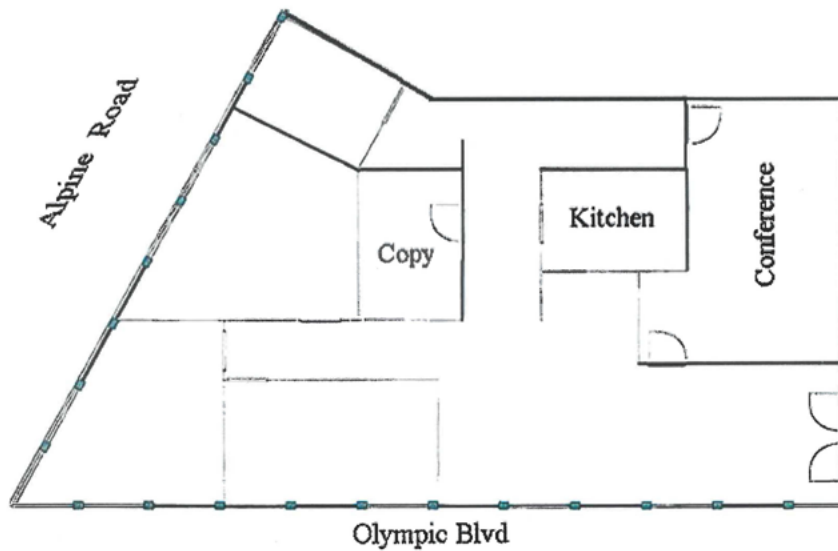
LIC: #02006440



www.tricommercial.com

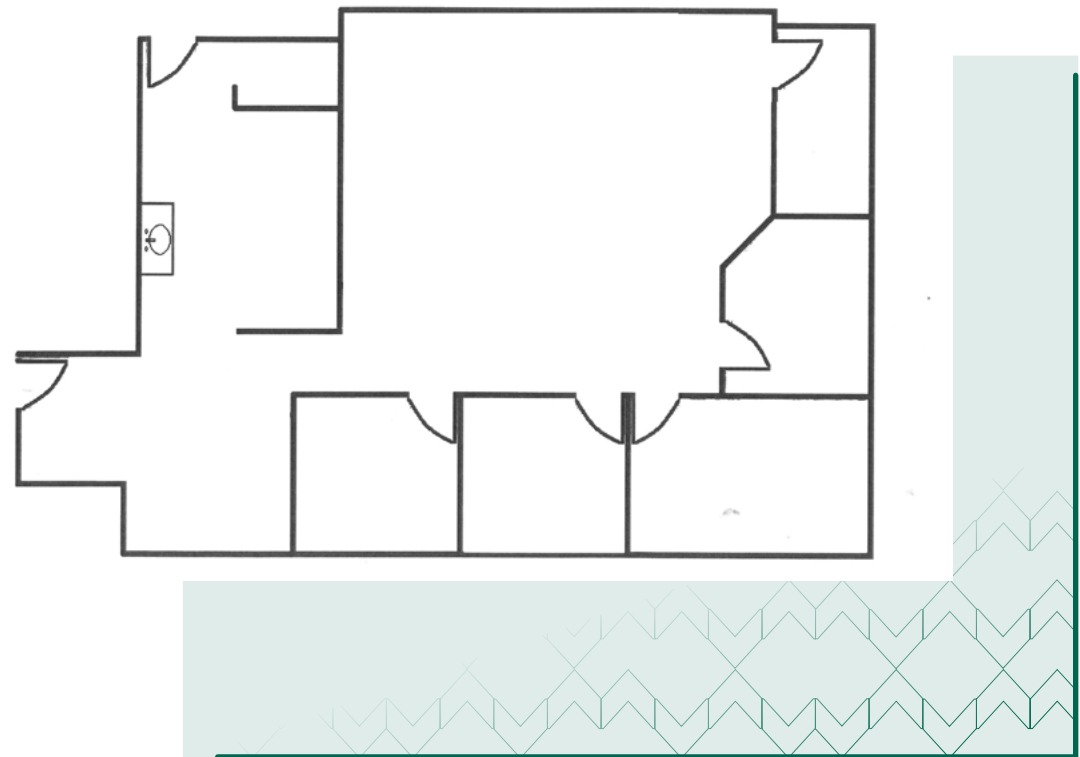
1901 OLYMPIC BLVD

OFFICE SPACE AVAILABLE
JUST OFF I-680 IN WALNUT CREEK



Suite 100
±2,190 RSF

1901 Olympic Blvd ~ Suite 300
2,103 RSF



Clayton Temple

925.296.3311

clayton.temple@tricommercial.com

LIC: #02006440

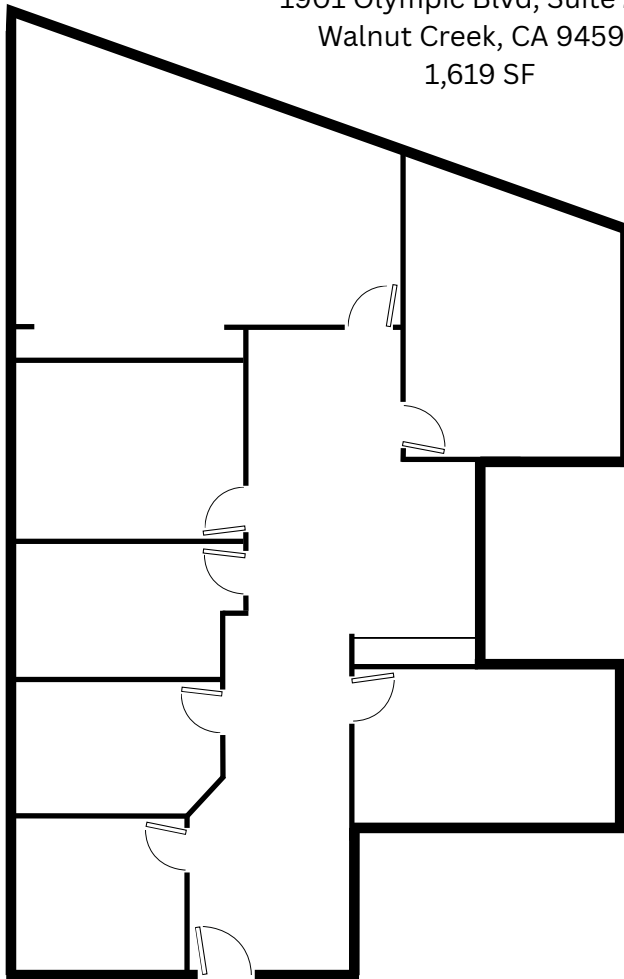


www.tricommercial.com

1901 OLYMPIC BLVD

**OFFICE SPACE AVAILABLE
JUST OFF I-680 IN WALNUT CREEK**

1901 Olympic Blvd, Suite 230
Walnut Creek, CA 94596
1,619 SF



not to scale



Clayton Temple

925.296.3311

clayton.temple@tricommercial.com

LIC: #02006440

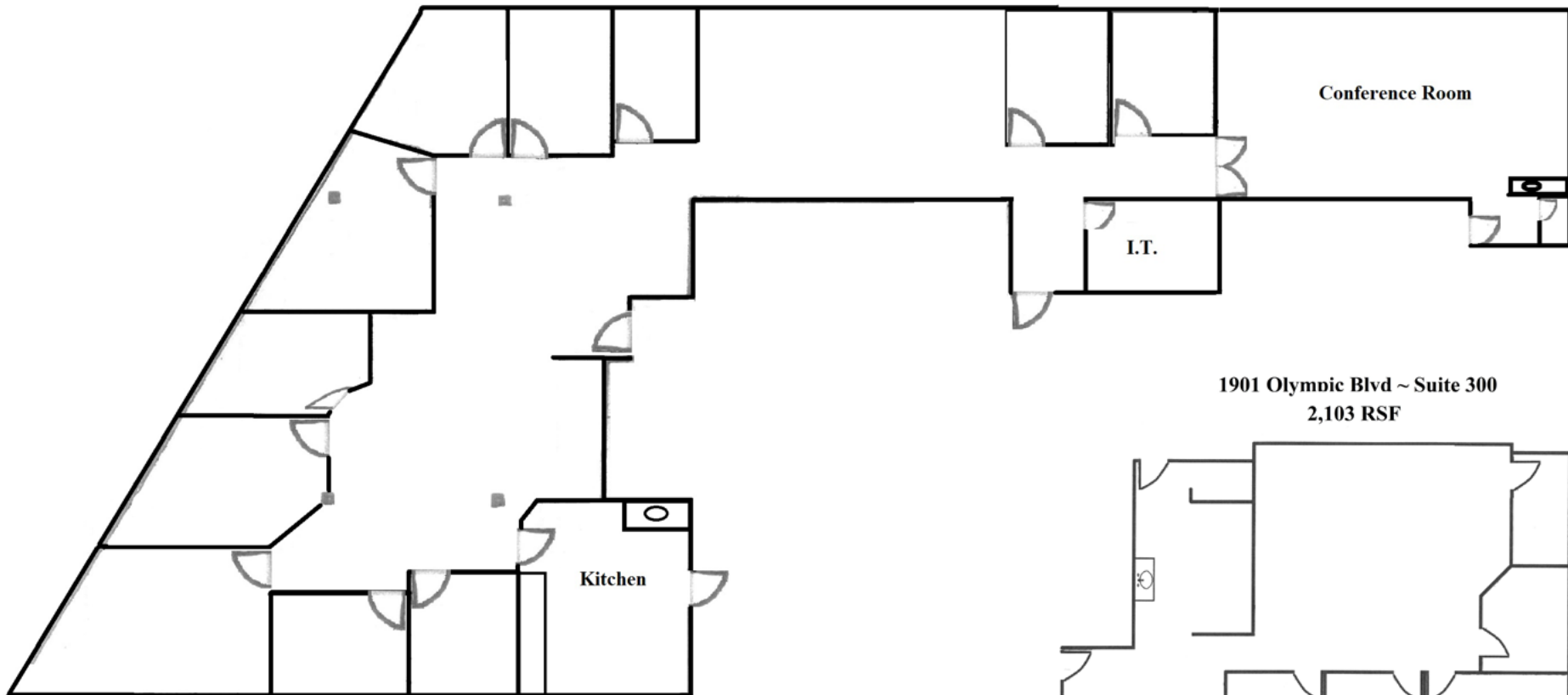


www.tricommercial.com

1901 OLYMPIC BLVD

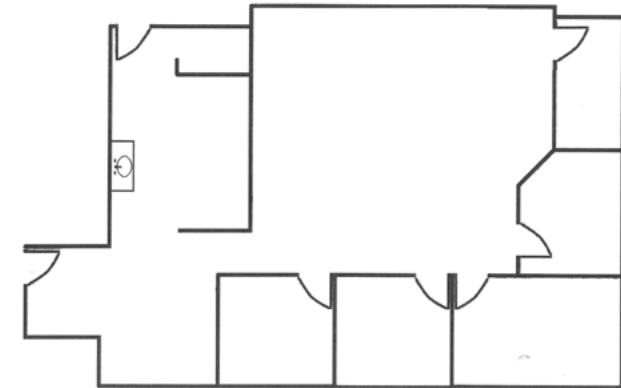
OFFICE SPACE AVAILABLE
JUST OFF I-680 IN WALNUT CREEK

Suite 320 - 5,602 SF*



*** Suites 300 & 320 can be easily
combined for ±7,705 SF**

1901 Olympic Blvd ~ Suite 300 2,103 RSF



Clayton Temple

925.296.3311

clayton.temple@tricommercial.com

LIC: #02006440



www.tricommercial.com