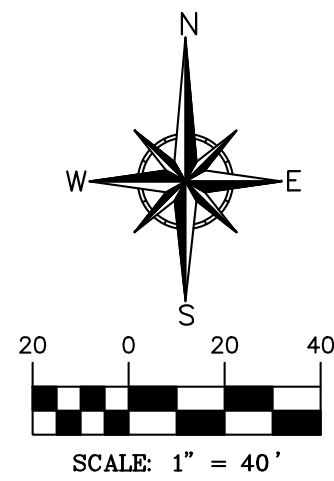


ABBREVIATIONS

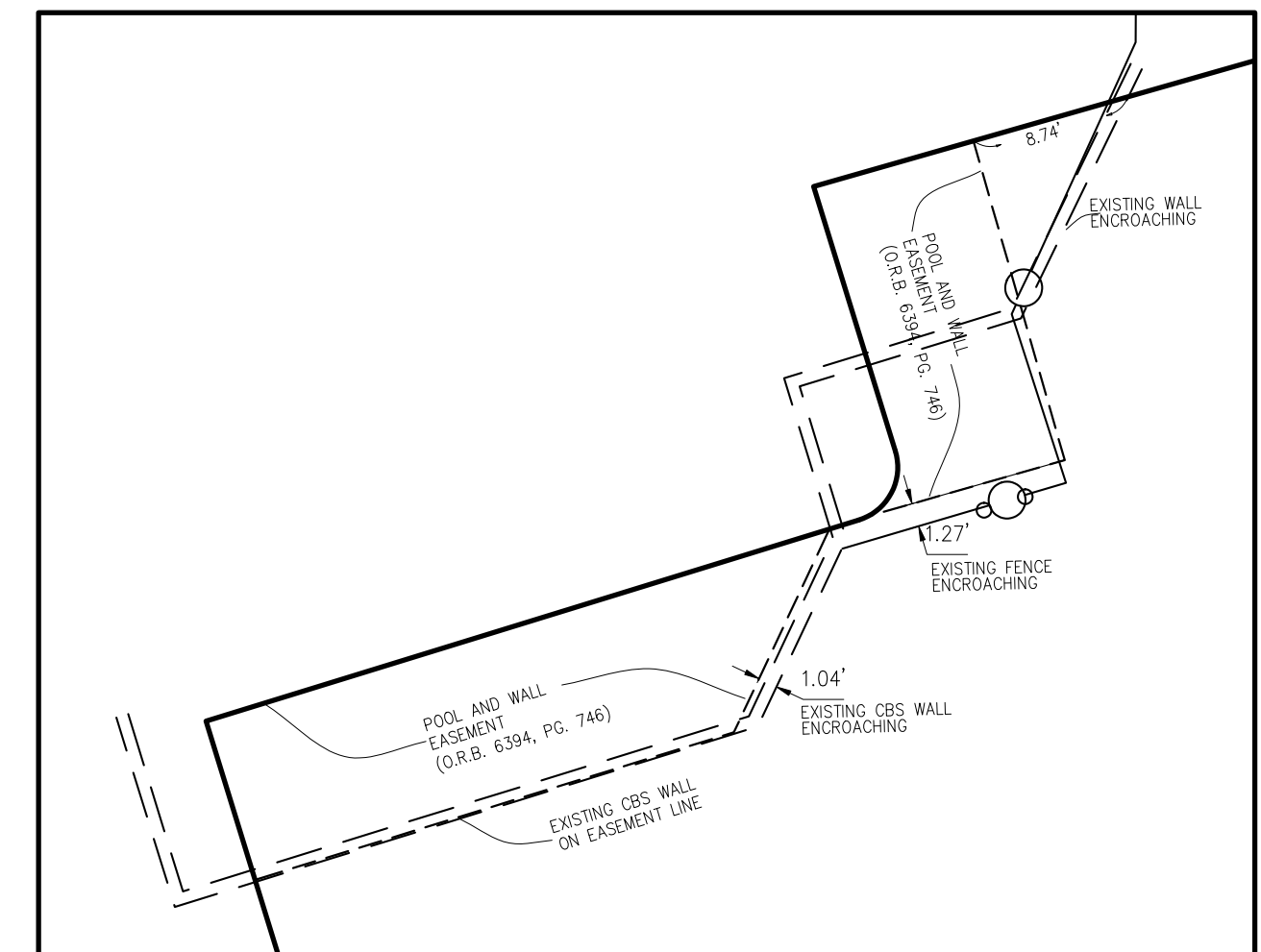
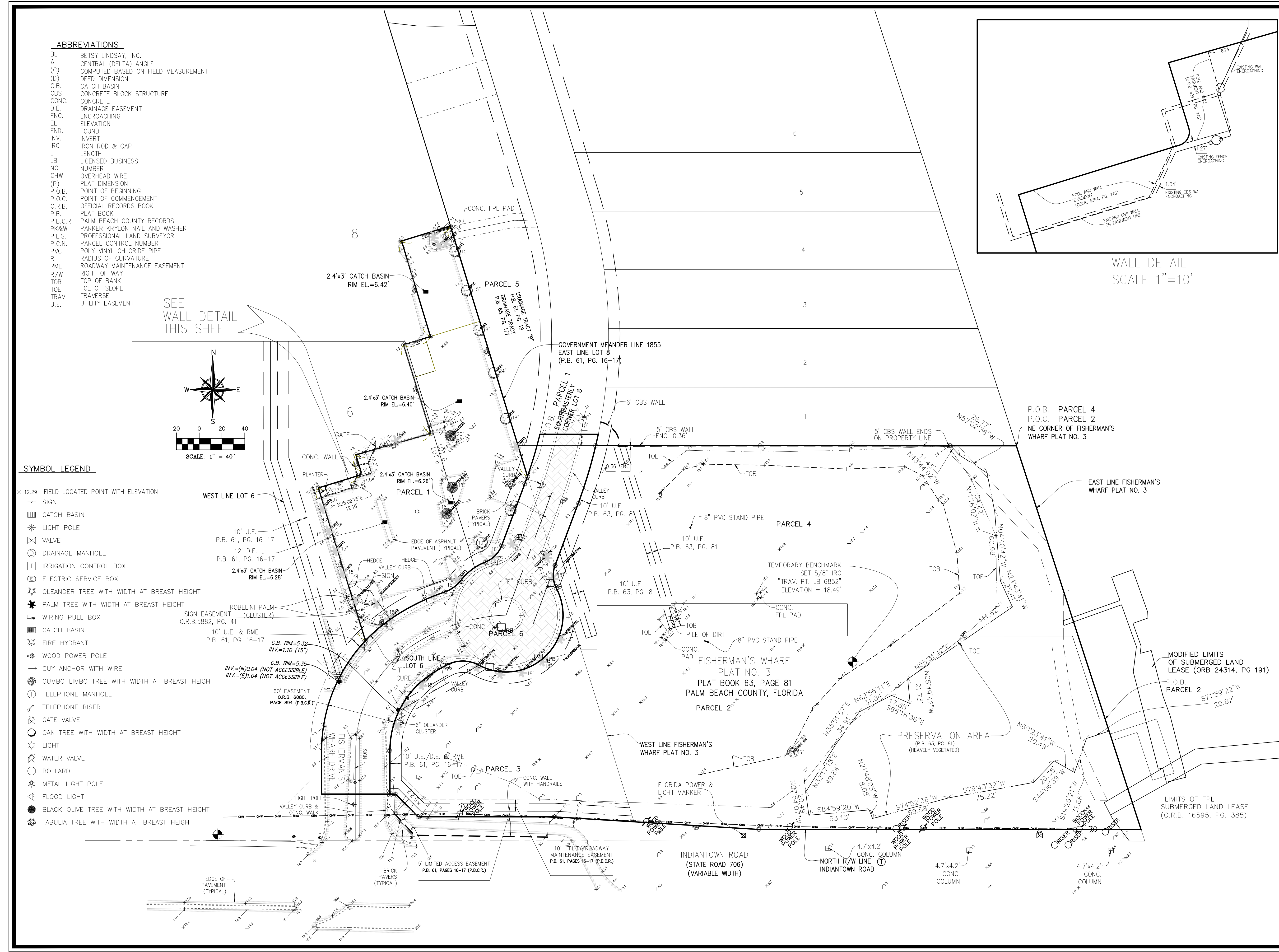
- BL BETSY LINDSAY, INC.
- Δ CENTRAL (DELTA) ANGLE
- (C) COMPUTED BASED ON FIELD MEASUREMENT
- (D) DEED DIMENSION
- C.B. CATCH BASIN
- CBS CONCRETE BLOCK STRUCTURE
- CONC. CONCRETE
- D.E. DRAINAGE EASEMENT
- ENC. ENCROACHING
- EL ELEVATION
- FND. FOUND
- INV. INVERT
- IRC IRON ROD & CAP
- L LENGTH
- LB LICENSED BUSINESS
- NO. NUMBER
- OHW OVERHEAD WIRE
- (P) PLAT DIMENSION
- P.O.B. POINT OF BEGINNING
- P.O.C. POINT OF COMMENCEMENT
- O.R.B. OFFICIAL RECORDS BOOK
- P.B. PLAT BOOK
- P.B.C.R. PALM BEACH COUNTY RECORDS
- PK&W PARKER KYRLON NAIL AND WASHER
- P.L.S. PROFESSIONAL LAND SURVEYOR
- P.C.N. PARCEL CONTROL NUMBER
- PVC POLY VINYL CHLORIDE PIPE
- R RADIUS OF CURVATURE
- RME ROADWAY MAINTENANCE EASEMENT
- R/W RIGHT OF WAY
- TOB TOP OF BANK
- TOE TOE OF SLOPE
- TRAV TRAVERSE
- U.E. UTILITY EASEMENT

SEE WALL DETAIL THIS SHEET



SYMBOL LEGEND

- X 12.29 FIELD LOCATED POINT WITH ELEVATION
- SIGN
- ▣ CATCH BASIN
- ⊙ LIGHT POLE
- ⊗ VALVE
- ⊙ DRAINAGE MANHOLE
- ⊞ IRRIGATION CONTROL BOX
- ⊞ ELECTRIC SERVICE BOX
- ⊗ OLEANDER TREE WITH WIDTH AT BREAST HEIGHT
- ⊗ PALM TREE WITH WIDTH AT BREAST HEIGHT
- ⊞ WIRING PULL BOX
- ▣ CATCH BASIN
- ⊗ FIRE HYDRANT
- ⊗ WOOD POWER POLE
- GUY ANCHOR WITH WIRE
- ⊗ GUMBO LIMBO TREE WITH WIDTH AT BREAST HEIGHT
- ⊞ TELEPHONE MANHOLE
- ⊞ TELEPHONE RISER
- ⊗ GATE VALVE
- ⊗ OAK TREE WITH WIDTH AT BREAST HEIGHT
- ⊙ LIGHT
- ⊗ WATER VALVE
- ⊙ BOLLARD
- ⊗ METAL LIGHT POLE
- ⊗ FLOOD LIGHT
- ⊗ BLACK OLIVE TREE WITH WIDTH AT BREAST HEIGHT
- ⊗ TABULIA TREE WITH WIDTH AT BREAST HEIGHT



B **BETSY LINDSAY, INC.**
 SURVEYING AND MAPPING
 7997 S.W. JACK JAMES DRIVE STUART, FLORIDA 34997
 (772)286-5753 (772)286-5933 FAX
 LICENSED BUSINESS NO. 6652

DATE	REVISIONS
4/27/15	EDIT AS PER CLIENT
5/03/16	UPDATE SURVEY
8/01/16	ADD PARCEL 6

DATE 03/04/2015
 SCALE 1"=40'
 FIELD BK. PBC 41 & 38
 DRAWN BY D.B.
 CHECKED BY E.A.L.

LOT 7, FISHERMAN'S WHARF, PHASE 1 & A PORTION OF
 FISHERMAN'S WHARF PLAT NO. 3 - PALM BEACH COUNTY, FL

BOUNDARY SURVEY
 EMALFARB INVESTMENTS

SHEET NO. 3
 OF 3 SHEETS
 PROJECT NO. 15-04