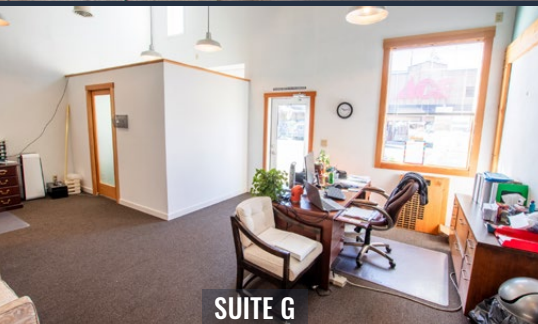


FOR LEASE

383-1,450 SF | \$1,350-\$3,250/MO. MG

Downtown Sisters Retail/Office Space

382 E Hood Ave., Sisters, OR 97759



SUITE G



SUITE F



COMMON AREA

PROPERTY DETAILS

Suite F:	383 SF – \$1,350/Mo. MG
Suite G:	1,450 SF – \$3,250/Mo. MG
Bldg. Size:	7,200 SF
Zoning:	DC (Downtown Commercial)
Parking:	Ample street parking

HIGHLIGHTS

- High profile retail building
- Suite F features an open work area with a kitchenette and in-suite restroom
- Suite G has three offices, open work area, kitchenette, and in-suite restrooms
- Access to common area
- Ideal for retail and office users
- Located in the heart of Downtown Sisters with excellent access to Hwy 20

Dan Kemp, CCIM | Emilio Tiscareno, Broker

600 SW Columbia St., Ste. 6100 | Bend, OR 97702

541.383.2444 | www.CompassCommercial.com

COMPASS
COMMERCIAL

REAL
ESTATE
SERVICES

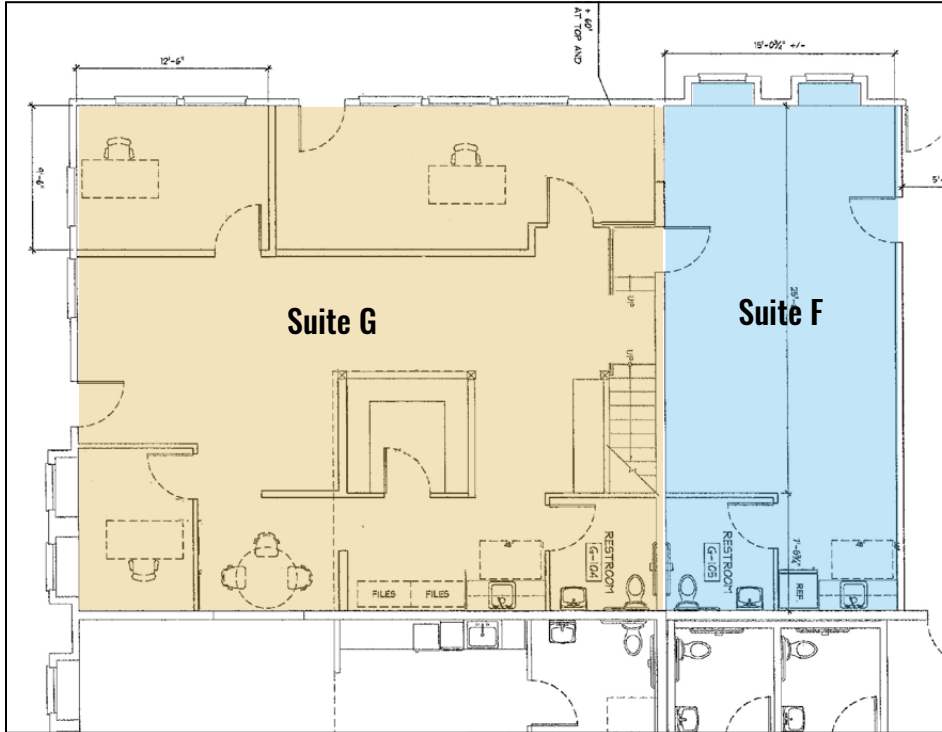
FOR LEASE

383-1,450 SF | \$1,350-\$3,250/MO. MG

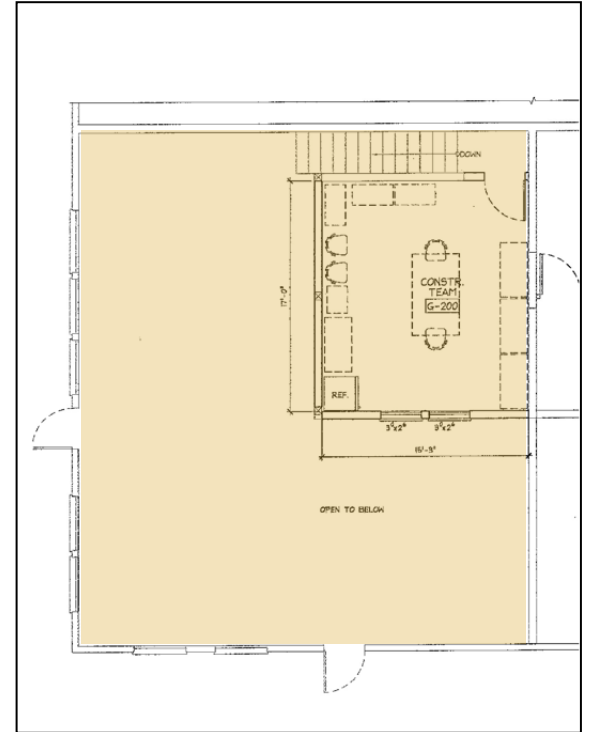
Downtown Sisters Retail/Office Space

382 E Hood Ave., Sisters, OR 97759

FLOOR PLAN



SUITE G MEZZANINE



Brokers are licensed in the state of Oregon. This information has been furnished from sources we deem reliable, but for which we assume no liability. This is an exclusive listing. The information contained herein is given in confidence with the understanding that all negotiations pertaining to this property be handled through Compass Commercial Real Estate Services. All measurements are approximate.



Dan Kemp, CCIM
Partner, Principal Broker
Cell 541.550.8413
dkemp@compasscommercial.com



Emilio Tiscareno
Broker
Cell 541.213.9640
etiscareno@compasscommercial.com

COMPASS
COMMERCIAL

REAL ESTATE
SERVICES