



2 OFFICES FOR LEASE IN DOWNTOWN

LEASE OVERVIEW

AVAILABLE | 2 OFFICES

LEASE PRICE | \$700 PER OFFICE

SQUARE FEET | 168-187 +/- SF EACH

ZONING | CENTRAL BUSINESS & HISTORIC DISTRICT

Great opportunity to lease an office on SW Broad Street in downtown Southern Pines. Two offices are available on the main level in this multi-tenanted building. Utilities included; tenants are responsible for their own internet. The property is within walking distance to local retail shops, unique dining, and the post office.

HOLLY BELL
NC BROKER
C: 910.690.1065
HOLLY@CSGNC.COM

CAROLINA SUMMIT GROUP
390 SW Broad Street, Suite B
Southern Pines, NC 28387
910.684.5353
carolinasummitgroup.com

GEORGE MANLEY
NC BROKER
C: 910.603.8395
GEORGE@CSGNC.COM

PHOTOS

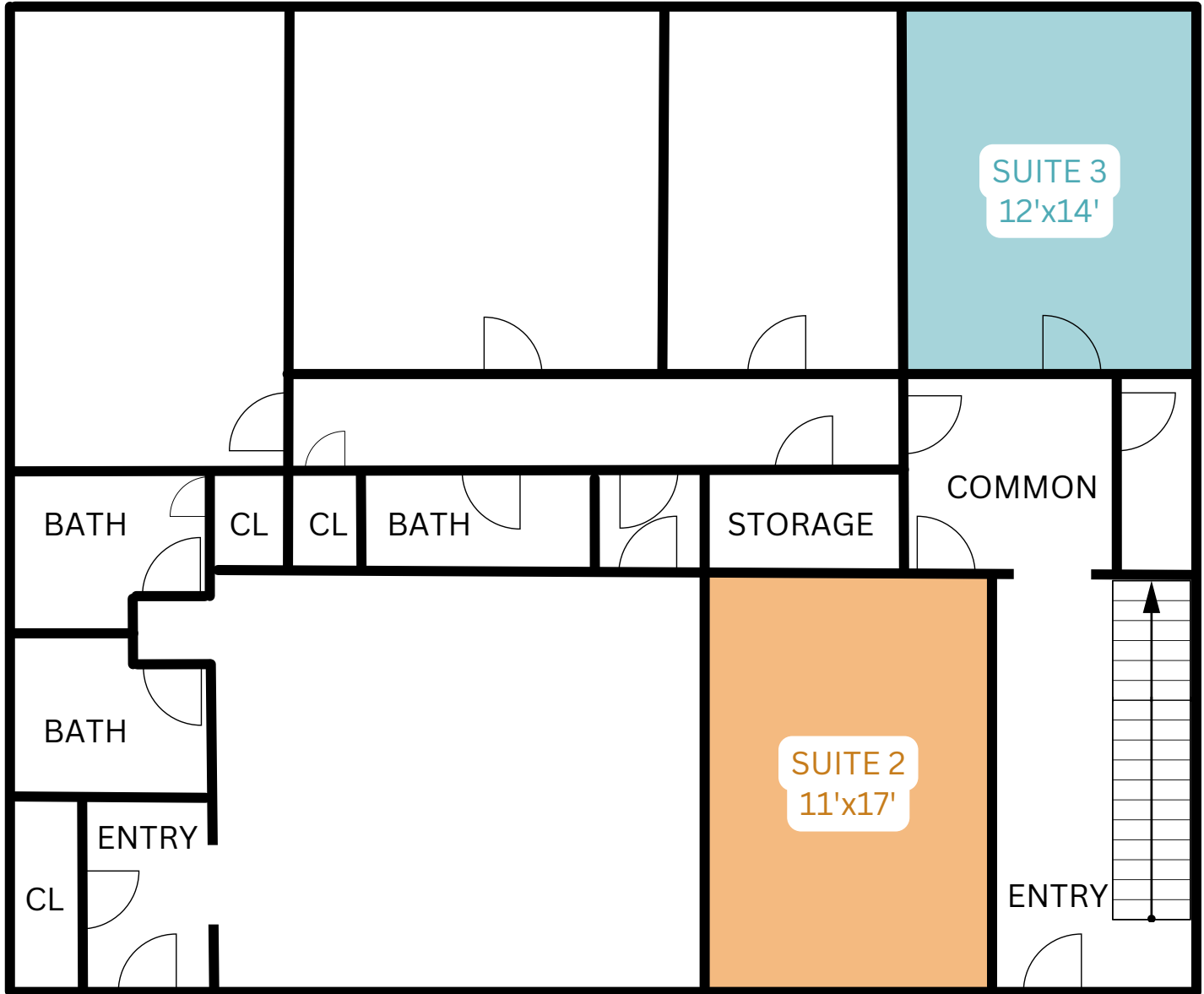


HOLLY BELL
NC BROKER
C: 910.690.1065
HOLLY@CSGNC.COM

CAROLINA SUMMIT GROUP
390 SW Broad Street, Suite B
Southern Pines, NC 28387
910.684.5353
carolinasummitgroup.com

GEORGE MANLEY
NC BROKER
C: 910.603.8395
GEORGE@CSGNC.COM

FLOOR PLAN



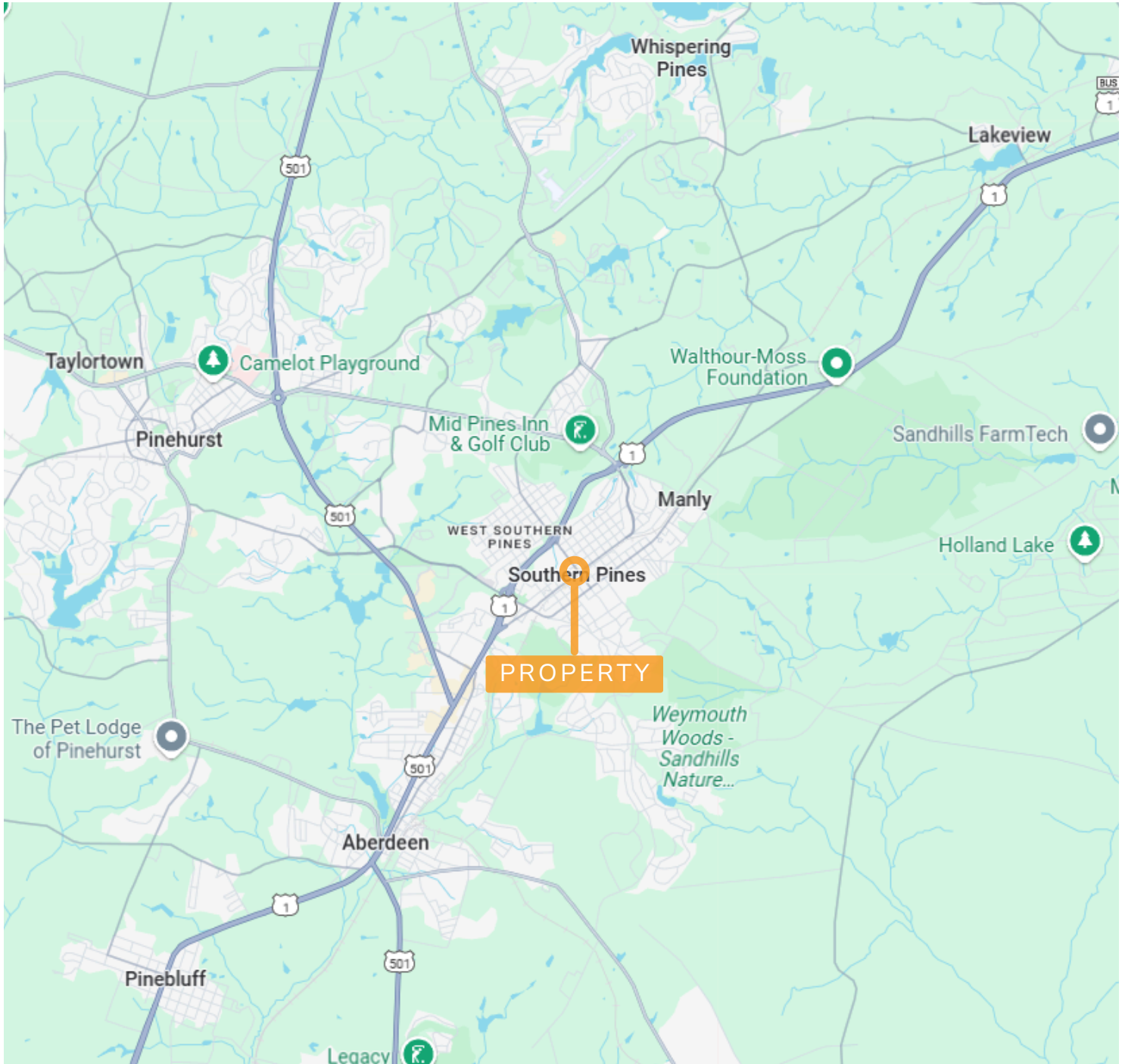
NOTE: Floor plan is for illustrative purposes only.
Actual dimensions & details may vary.

HOLLY BELL
NC BROKER
C: 910.690.1065
HOLLY@CSGNC.COM

CAROLINA SUMMIT GROUP
390 SW Broad Street, Suite B
Southern Pines, NC 28387
910.684.5353
carolinasummitgroup.com

GEORGE MANLEY
NC BROKER
C: 910.603.8395
GEORGE@CSGNC.COM

LOCATION MAP



HOLLY BELL
NC BROKER
C: 910.690.1065
HOLLY@CSGNC.COM

CAROLINA SUMMIT GROUP
390 SW Broad Street, Suite B
Southern Pines , NC 28387
910.684.5353
carolinasummitgroup.com

GEORGE MANLEY
NC BROKER
C: 910.603.8395
GEORGE@CSGNC.COM