

PROPERTY DETAILS

- Suite 5101: +/- 4,000 SF
- Office: +/- 1,200 SF
- Rental Rate From: \$21.00 NNN + \$7.74 CAM (est. 2026)
- 1 Grade Level Door
- 1 Dock High Door
- 21' ceiling height
- Parking: +/- 2.43 / 1,000 SF
- Zoning: I-1 (Light Industrial)
- Strategically located just east of I-75, with convenient access to I-595, the Florida Turnpike, and I-95.

ABOUT PROPERTY



PRICE
\$21.00 PSF (NNN)



YEAR BUILT
2000



AVAILABLE SF
4,000 SF



PARKING
+/- 2.43 / 1,000 SF



LOCATION
Sunrise, FL

For more information:

Keith R. Graves, CCIM, SIOR

Daniel Forman

Jonathan Thiel

954.652.2031 | Kgraves@Bergercommercial.Com

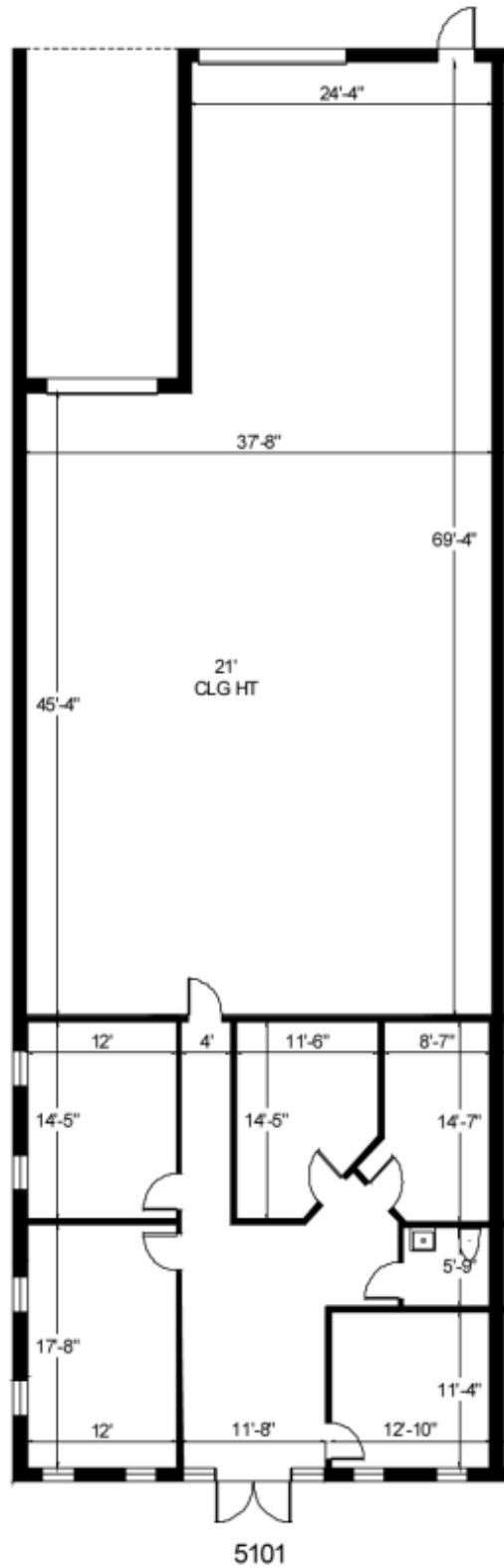
954.652.2004 | Dforman@Bergercommercial.Com

954.652.2020 | Jthiel@Bergercommercial.Com

bergercommercial.com



COMMERCIAL BROKERAGE AND PROPERTY MANAGEMENT



For more information:

Keith R. Graves, CCIM, SIOR

Daniel Forman

Jonathan Thiel

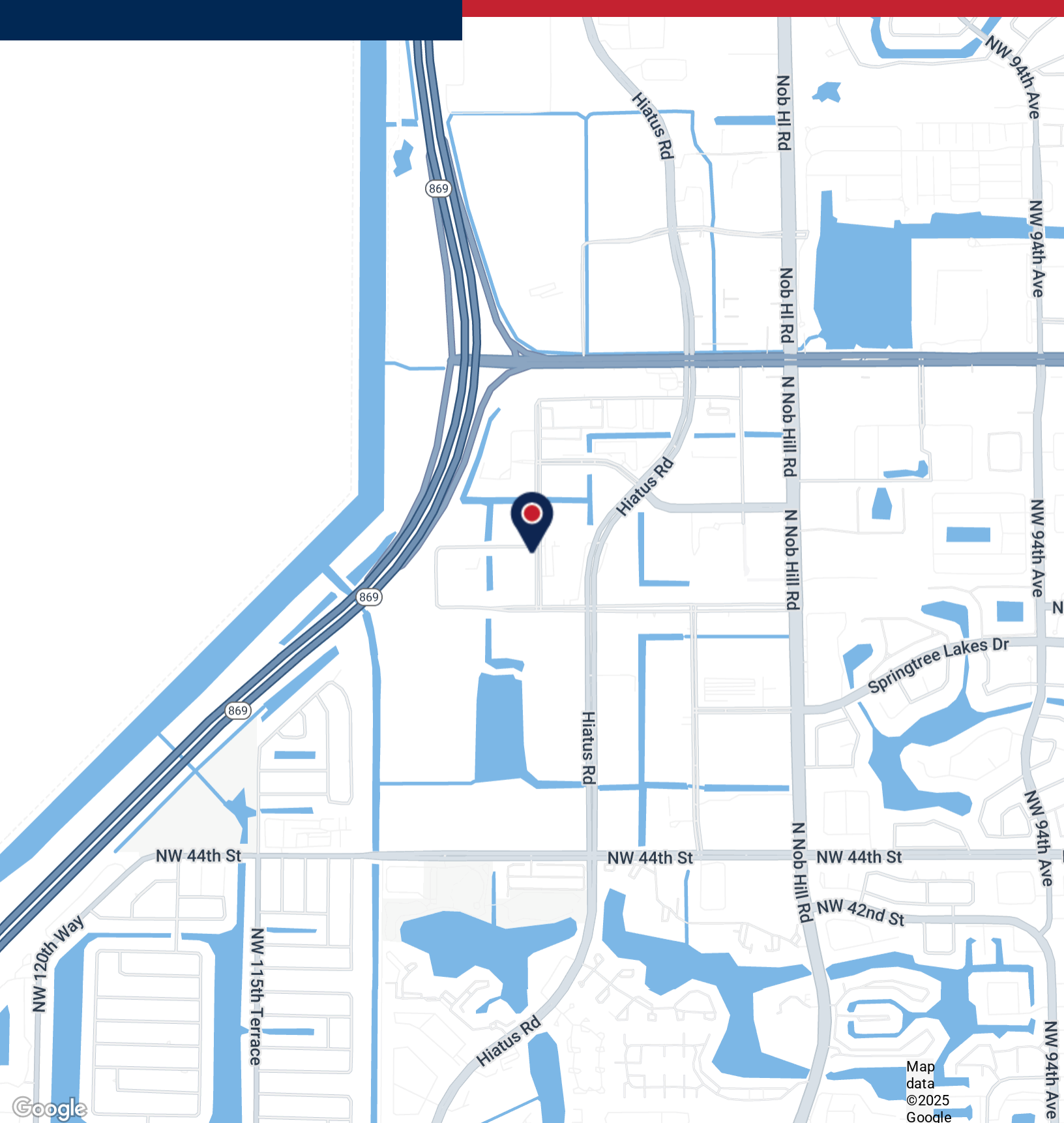
954.652.2031 | Kgraves@Bergercommercial.Com

954.652.2004 | Dforman@Bergercommercial.Com

954.652.2020 | Jthiel@Bergercommercial.Com

bergercommercial.com





Map data ©2025 Google

For more information:

Keith R. Graves, CCIM, SIOR

Daniel Forman

Jonathan Thiel

954.652.2031 | Kgraves@Bergercommercial.com

954.652.2004 | Dforman@Bergercommercial.com

954.652.2020 | Jthiel@Bergercommercial.com

bergercommercial.com

