



50.47 Acres I35W, Argyle, TX

PROPERTY DETAILS

- ✓ 3120' of I35 Road Frontage
- ✓ Zoned PD for Retail or Commercial Use
- ✓ Hard Corner at Crawford Rd.
- ✓ Argyle Water Available

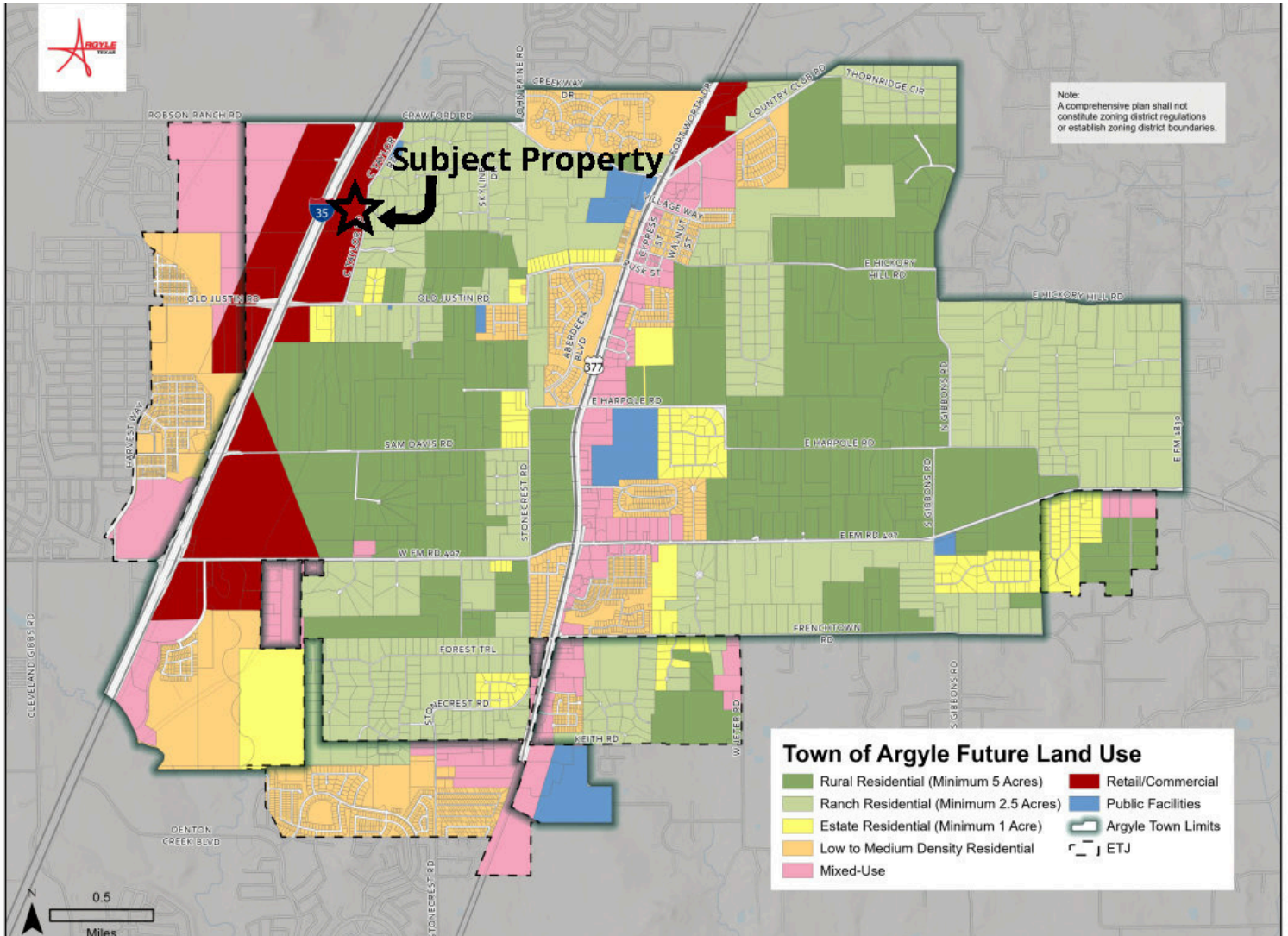
OFFERING SUMMARY

Sale Price: \$21,985,298
Lot Size: ±50.47 Acres
Price/sqft: \$10.00

NEWLAND
REAL ESTATE



Website: northtexasrealestate.com

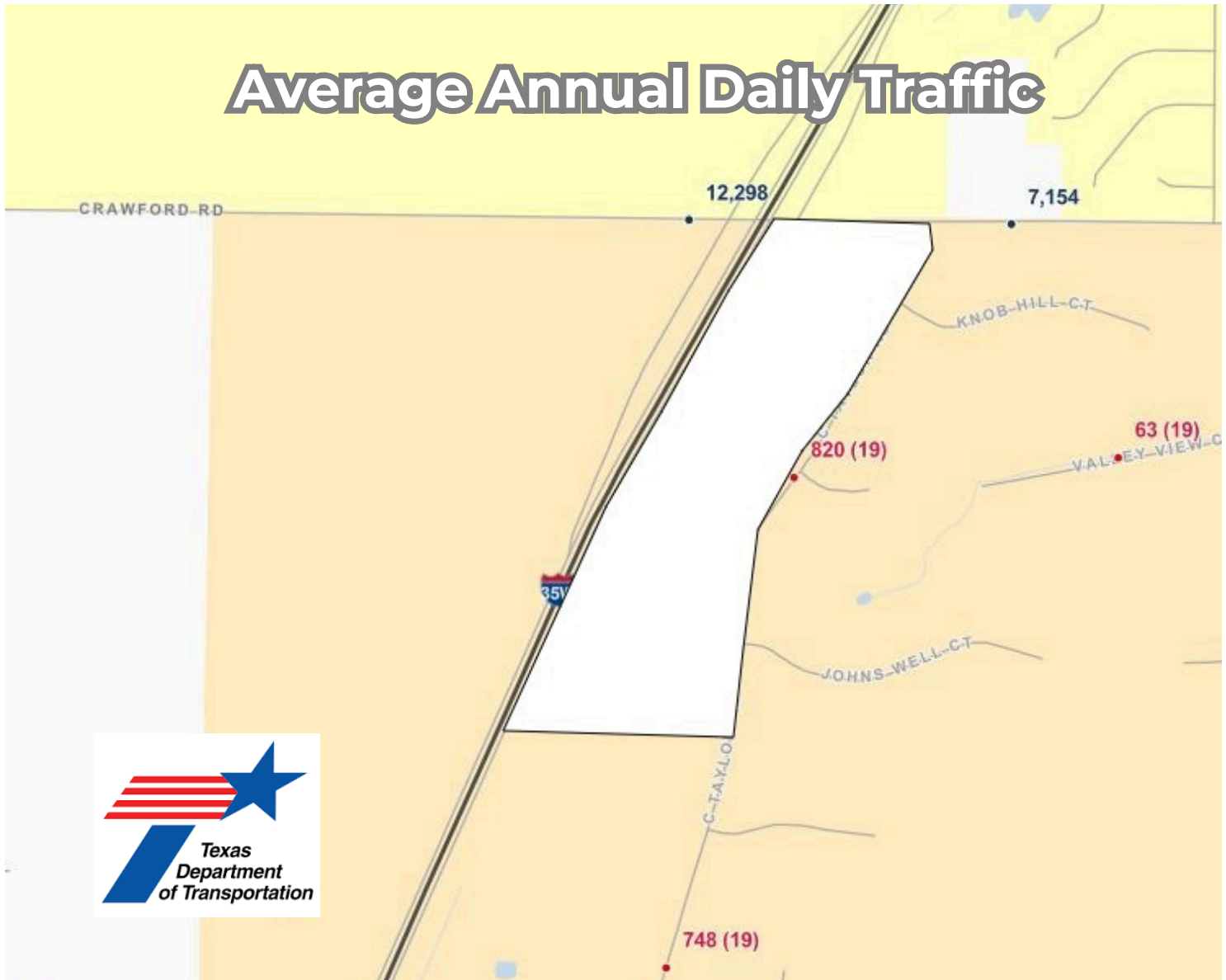


50.47 Acres I35W, Argyle, TX

- ✓ Zoned PD-1 for Retail or Commercial Use
- ✓ Argyle ISD



Average Annual Daily Traffic



50.47 Acres I35W, Argyle, TX

STREET	TRAFFIC (AADT)	YEAR
Crawford Rd	12,298	2023





50.47 Acres I35W, Argyle, TX

Located in a strategic area, of high growth, in one of the fastest growing counties in the USA.



Contact:
Everette Newland
940-565-8326