



**AVAILABLE  
FOR LEASE**

**\$14 SF**

**Contact:**

**Alex Topalidis**

Cell: 484-473-5358

Office: 610-359-9700

atopalidis@capitalcomre.com

## OWNER/USER INVESTMENT PROPERTY FOR SALE



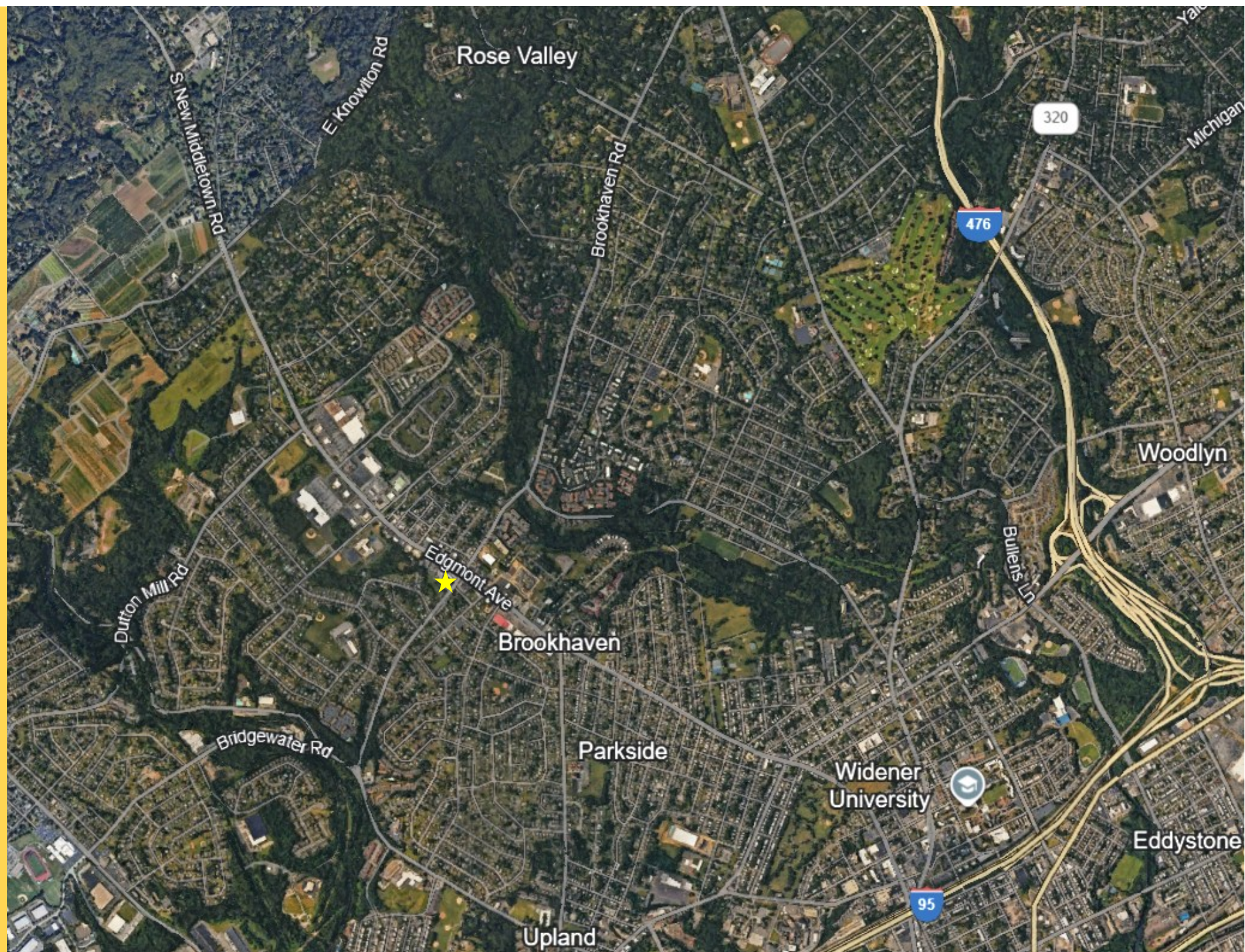
**LOCATION: 4106-4114 Edgmont Avenue, Brookhaven, PA 19015**

### PROPERTY HIGHLIGHTS:

- ◆ 2 UNITS AVAILABLE: 4112: 900 SF; 4114: 900 SF
- ◆ HIGH VISIBILITY IN THE HEART OF BROOKHAVEN
- ◆ RIGHT OFF BROOKHAVEN RD.
- ◆ DEMOGRAPHICS WITHIN 3 MI: POPULATION +/- 112,549 & AHI \$92,806
- ◆ +/- 40 PARKING SPACES
- ◆ 19,609 COMBINED ADT

The information above has been obtained from sources believed reliable. While we do not doubt its accuracy, we have not verified it and make no guarantee, warranty, or representation about it. It is Buyer/Lessee responsibility to independently confirm its accuracy and completeness. This is not intended to solicit another Broker's listing. Some properties may be in cooperation with another broker.





The information above has been obtained from sources believed reliable. While we do not doubt its accuracy, we have not verified it and make no guarantee, warranty, or representation about it. It is Buyer/Lessee responsibility to independently confirm its accuracy and completeness. This is not intended to solicit another Broker's listing. Some properties maybe in cooperation with another broker.