



RANCHO MARBELLA CENTER

30900-30950 RANCHO VIEJO RD | SAN JUAN CAPISTRANO, CALIFORNIA



Dan O'Hare
T: 949-510-0920
dohare@stonewood.net

Mark Mallars
T: 714-928-5987
mmallars@stonewood.net

For Further
Information
Contact Us

Premium Office & Medical Suites in San Juan Capistrano

Discover a professional campus designed for success, located immediately adjacent to the prestigious Marbella Country Club. Rancho Marbella Center offers an exceptional environment for businesses seeking quality, convenience, and style.

Key features:

- High-End Finishes: Quality interiors throughout, with select suites featuring kitchens & private balconies
- Flexible Suite Sizes: Wide range of suite sizes
- Elevator Served—Ensuring easy movement for staff & visitors
- Ample Parking: Reserved covered & surface parking options
- Storage: On-site storage units available for added flexibility
- Freeway Access: Effortless access to Interstate 5 via Ortega Highway or Junipero Serra Road, connecting you to the heart of Orange County
- Amenity Rich Location: Nearby restaurants, financial, and transportation services

Elevate your business presence at Rancho Marbella Center—where professionalism meets convenience.



Property Highlights



Dan O'Hare
T: 949-510-0920
dohare@stonewood.net

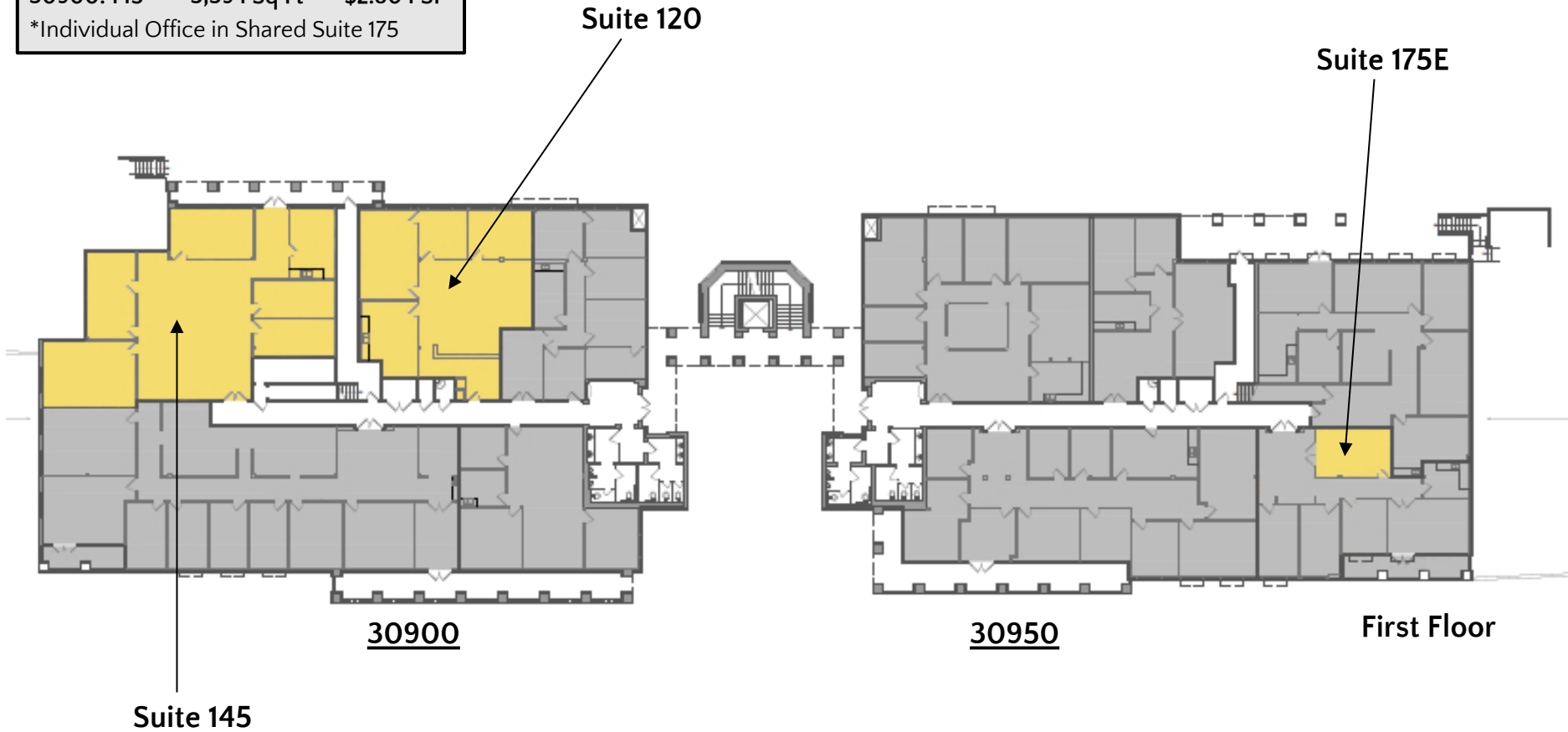
Mark Mallars
T: 714-928-5987
mmallars@stonewood.net

For Further
Information
Contact Us

Available Spaces – First Floor

Suite	Size	Rent PSF
30950: 175E*	416 Sq Ft	\$3.50 PSF
30900: 120	2,008 Sq Ft	\$2.80 PSF
30900: 145	3,394 Sq Ft	\$2.80 PSF

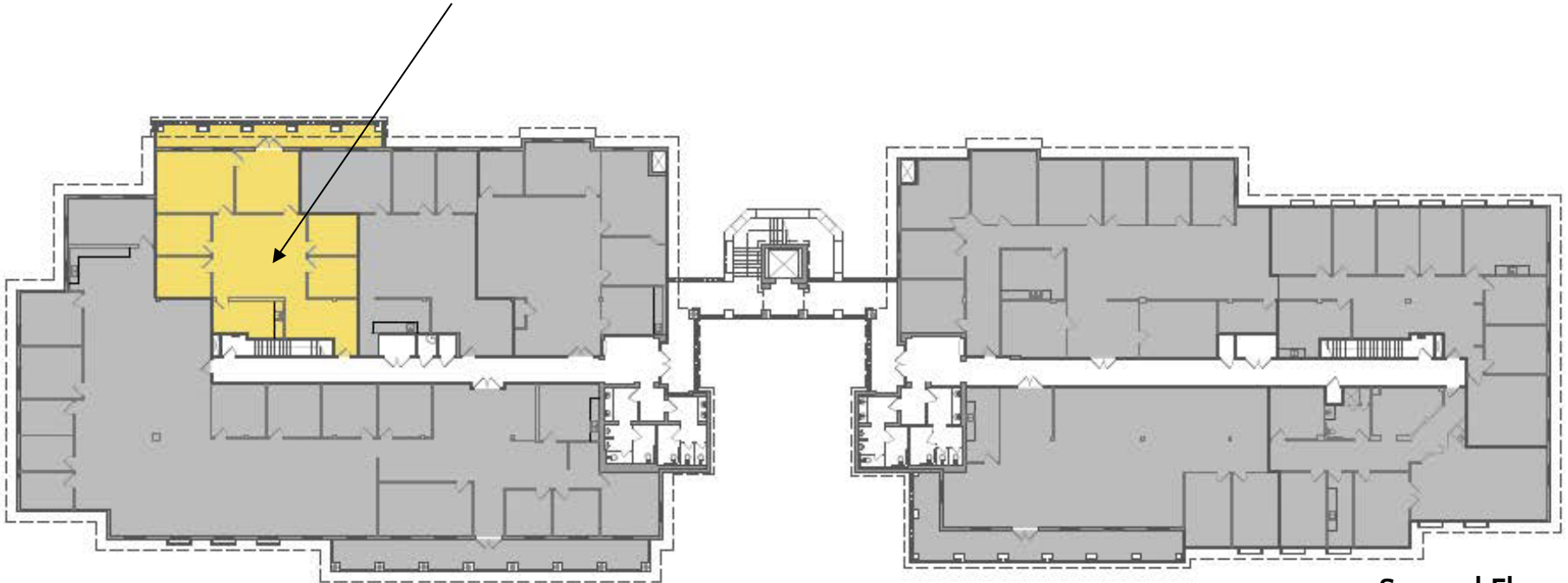
*Individual Office in Shared Suite 175



Available Spaces – Second Floor

Suite	Size	Rent PSF
30900: 265	1,992 Sq Ft	\$2.80 PSF

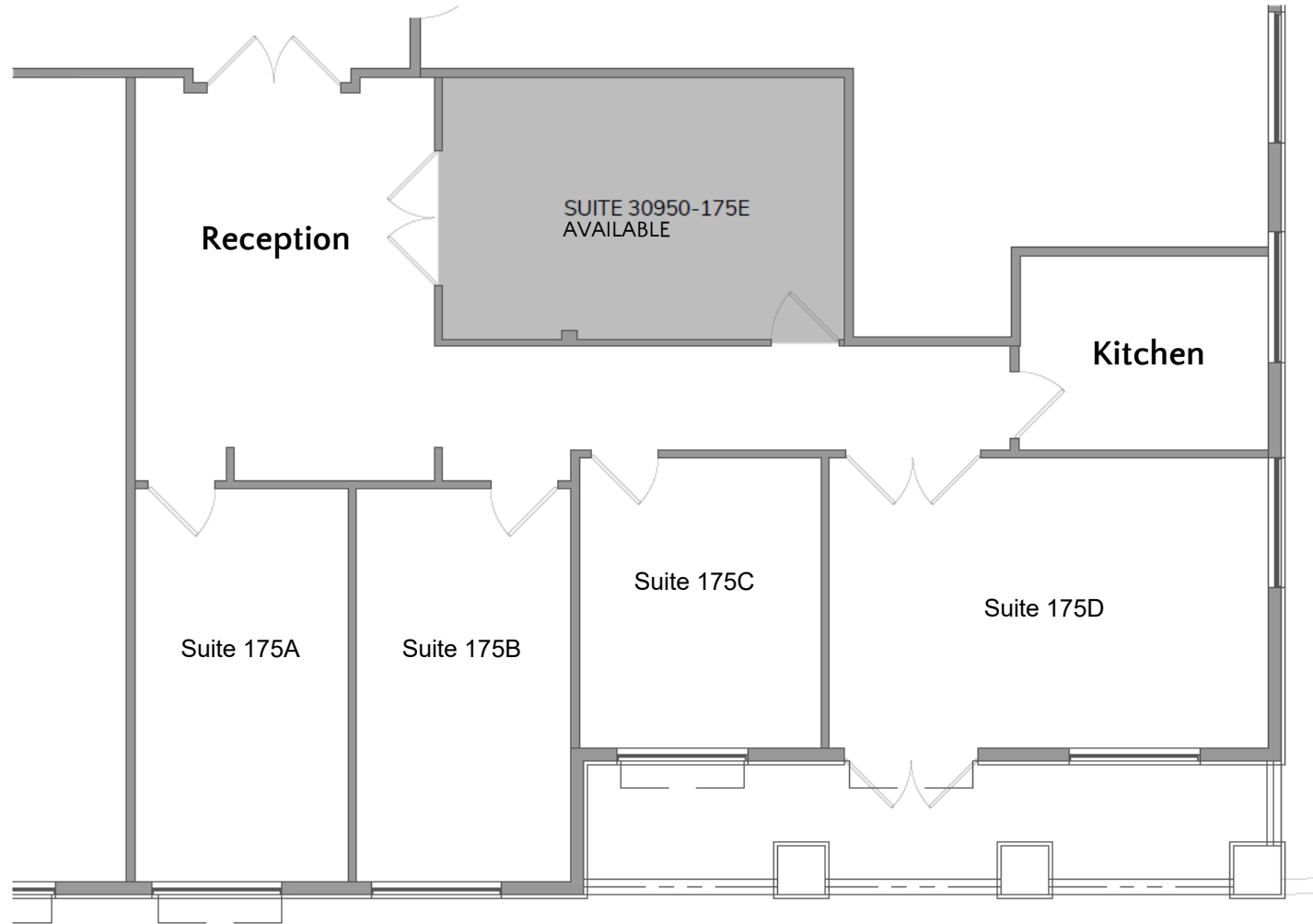
Suite 265



Second Floor

Suite 175E

- 416 Sq Ft
- \$3.50 PSF
- Each tenant splits the kitchen and reception area space (factored into monthly rent)



Suite 265

- 1,992 Sq Ft
- \$2.80 PSF



Suite 120

- 2,008 Sq Ft
- \$2.80 PSF



Suite 145

- 3,394 Sq Ft
- \$2.80 PSF

