

# ASHBY SQUARE

NEW BYHALIA, COLLIERVILLE, TN 38017

# FOR LEASE



## LOCATION DESCRIPTION

New development on the northeast corner of New Byhalia Road and Maynard Way in Collierville, Tennessee

## PROPERTY HIGHLIGHTS

- Ashby Square is a new community development that will include commercial and residential spaces to create a place where residents can Live, Work, and Play
- 33,200 SF of retail space For Lease
- Retail buildings available offering 5,000 SF, 10,400 SF and 12,800 SF
- Adjacent to a proposed 200 unit multifamily complex
- Traffic Count: New Byhalia Rd 34,591 AADT



DEMOGRAPHICS	1 MILE 3 MILES 5 MILES		
	Population	5,120	45,720
Daytime Population	10,354	44,820	67,190
Households	1,764	16,199	25,045
Average HH Income	\$157,802	\$161,096	\$176,821



**ROBERT SLOAN**

robert.sloan@tscg.com  
901.334.5703

**DANNY BURING**

danny.buring@tscg.com  
901.334.5701

**JOHN GREEN<sup>SM</sup>  
COMMERCIAL**

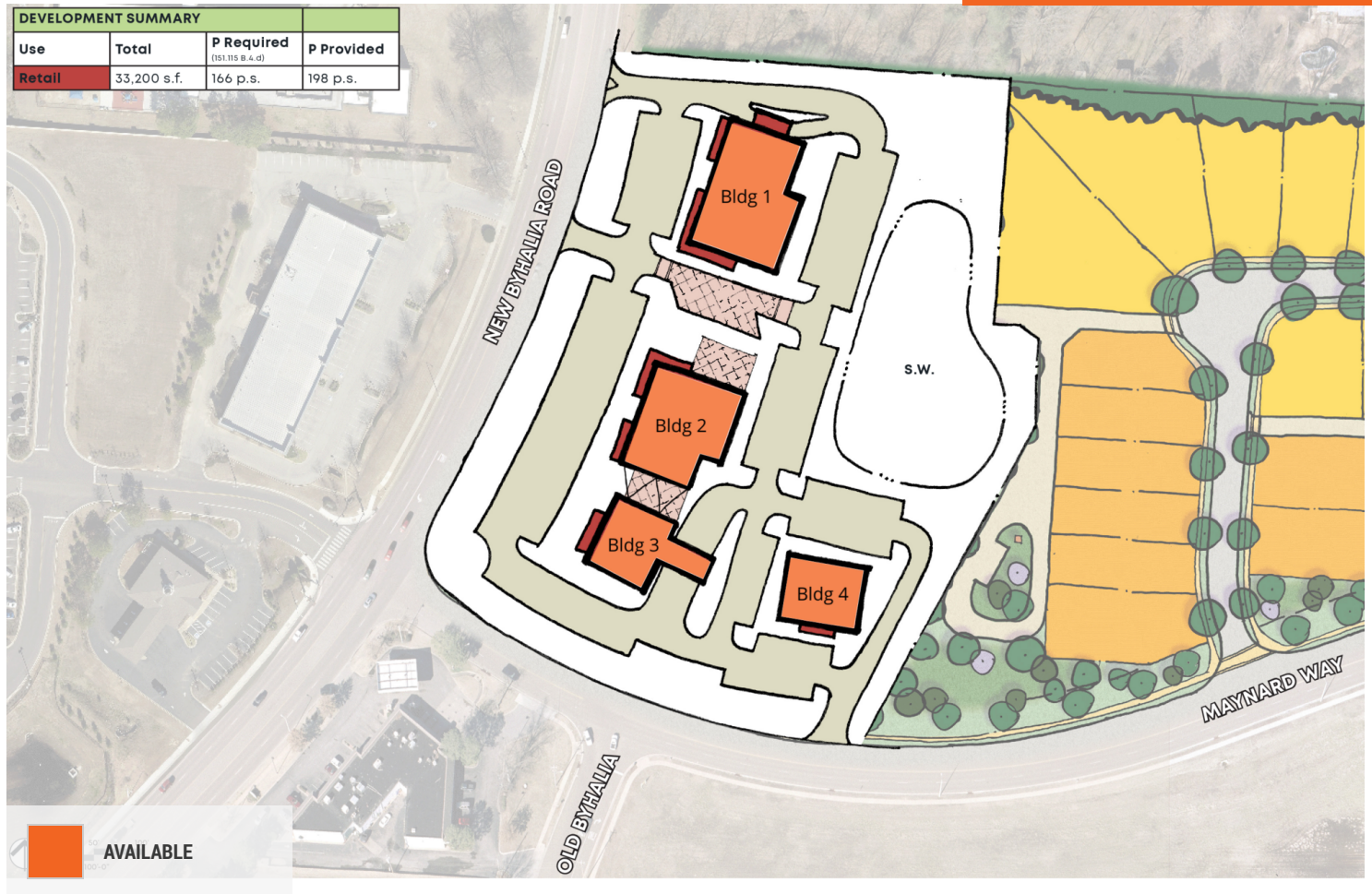
Jim Gannaway  
jgannaway@johnngreen.com  
901.494.3169



# ASHBY SQUARE

NEW BYHALIA, COLLIERVILLE, TN 38017

## FOR LEASE



SUITE	TENANT NAME	SPACE SIZE
Bldg 1	Available	12,800 SF
Bldg 2	Available	10,400 SF
Bldg 3	Available	5,000 SF
Bldg 4	Available	5,000 SF



**ROBERT SLOAN**  
robert.sloan@tscg.com  
901.334.5703

**DANNY BURING**  
danny.buring@tscg.com  
901.334.5701

**JOHN GREEN<sup>SM</sup>**  
**COMMERCIAL**  
Jim Gannaway  
jgannaway@johngreen.com  
901.494.3169