



CAMCO BUILDING

1106 East 6600 South, Murray, UT 84121

PROPERTY DESCRIPTION:

- Beautiful Free Standing Office Building
- 6.4 / 1,000 Parking Ratio
- Easy Freeway Access
- Split-Level Modern Design
- Kitchen, Conference Rooms, Offices
- 0.61 Acre Lot Situated along Little Cottonwood Creek
- Great for Independent Business Looking for a Presence

LEASE RATE:

\$17.00 SF/yr (NNN)

PROPERTY DETAILS:

7,784 SF

MICHAEL FERRO

801.554.3002
ferro@iproperties.com

NICO PRISKOS

801.413.8902
nico@iproperties.com

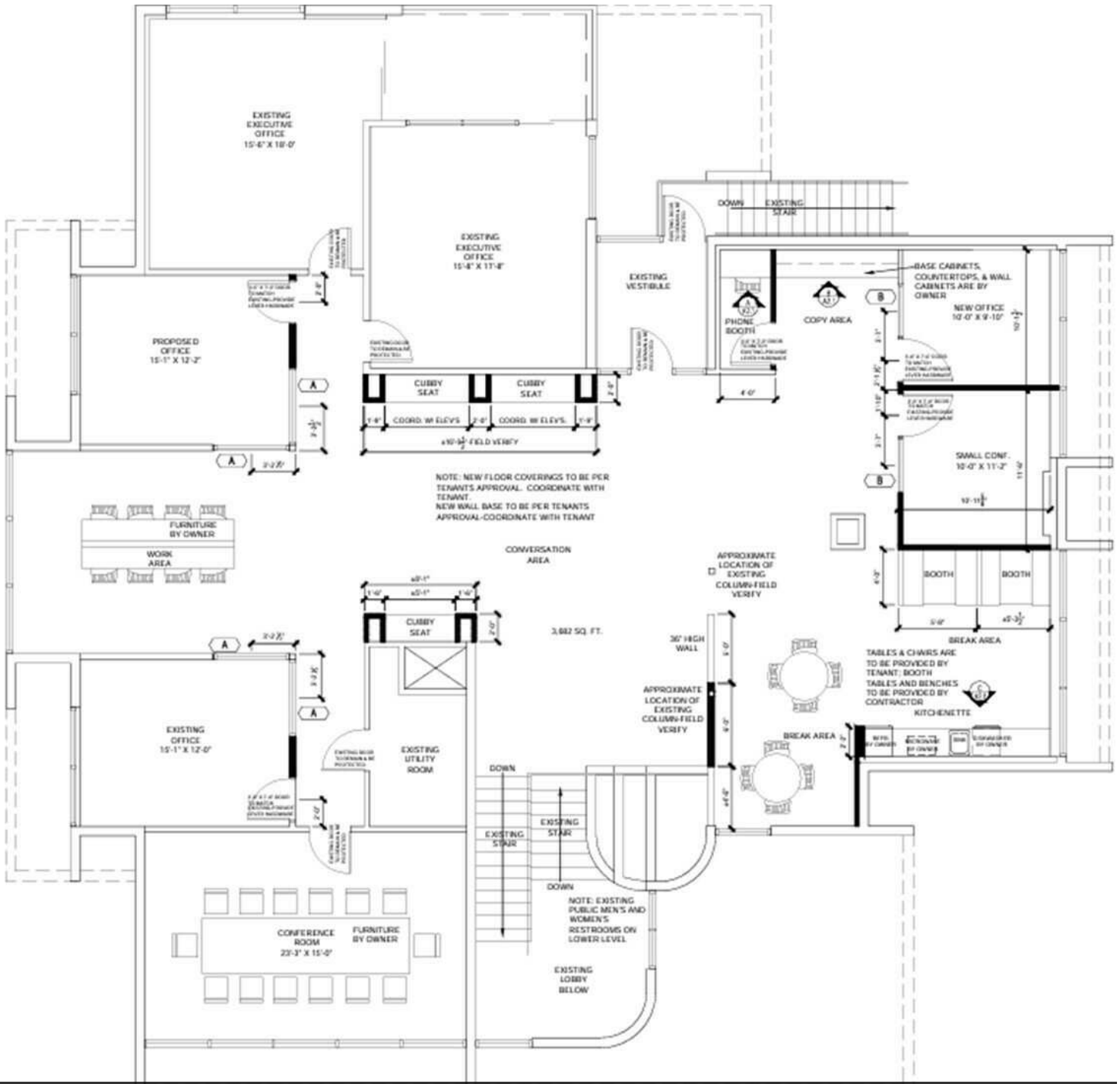
51 East 400 South Suite 210
Salt Lake City, UT 84111
801.355.0600 | iproperties.com



MICHAEL FERRO
801.554.3002
ferro@iproperties.com

NICO PRISKOS
801.413.8902
nico@iproperties.com

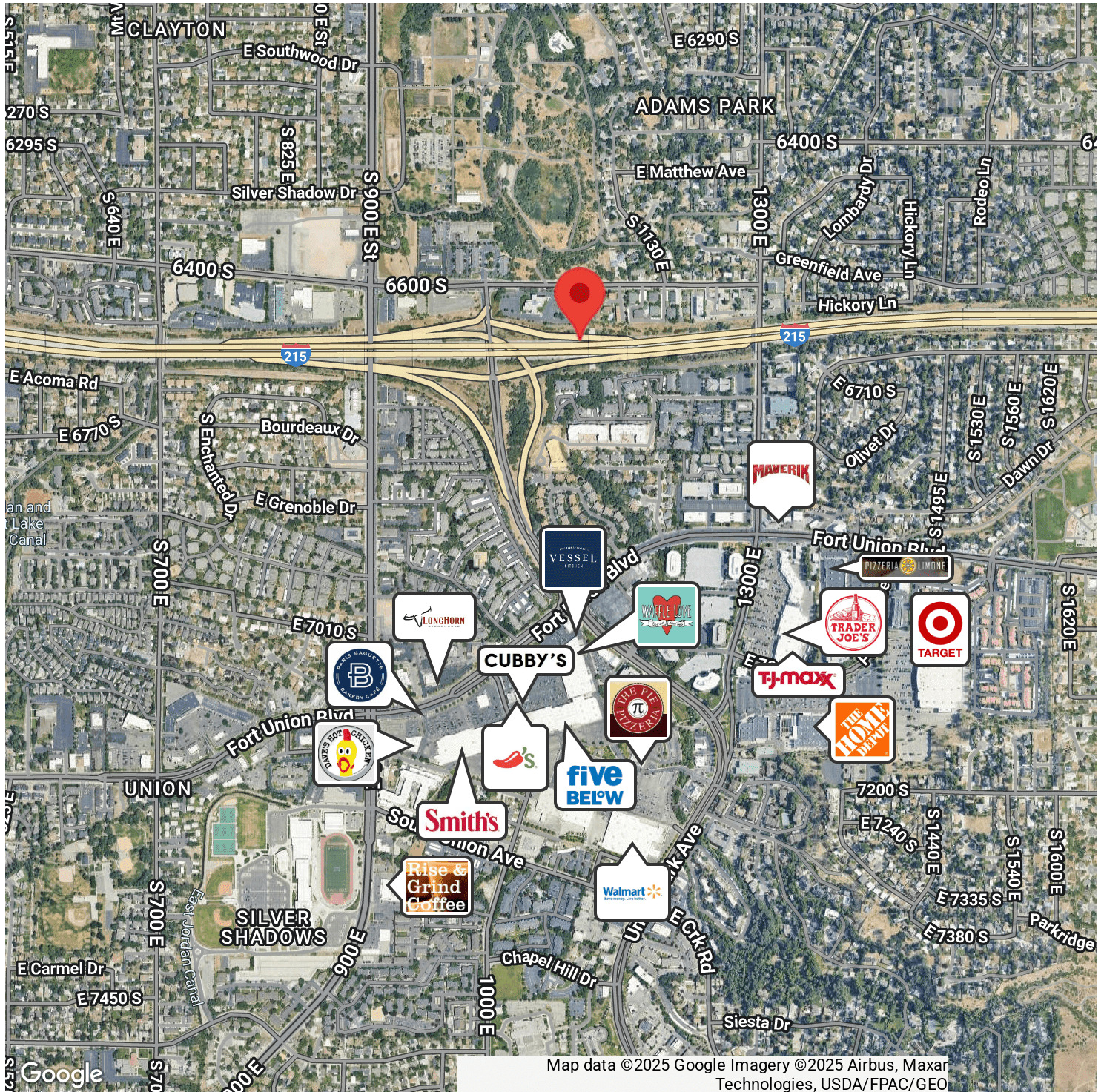
51 East 400 South Suite 210
Salt Lake City, UT 84111
801.355.0600 | iproperties.com



Main Level Floor Plan

MICHAEL FERRO **NICO PRISKOS**
801.554.3002 801.413.8902
ferro@iproperties.com nico@iproperties.com

51 East 400 South Suite 210
Salt Lake City, UT 84111
801.355.0600 | iproperties.com



MICHAEL FERRO

801.554.3002

ferro@iproperties.com

NICO PRISKOS

801.413.8902

nico@iproperties.com

51 East 400 South Suite 210
Salt Lake City, UT 84111
801.355.0600 | iproperties.com