

FOR LEASE

1,252 SF OFFICE



216 W 7TH NORTH ST, SUMMERVILLE, SC 29483

Harbor
COMMERCIAL PARTNERS

216 W 7TH NORTH ST, Summerville, SC 29483

PROPERTY DESCRIPTION

216 W 7th N Street is a 1,252 SF free-standing office/retail in Summerville. The property is zoned Neighborhood Mixed-Use. Ideal for professional services, offices, small shops, and some retail that is convenient and within walking distance of neighborhoods.

OFFERING

SIZE	LEASE RATE	LEASE TYPE	AVAILABLE
1,252 SF	\$2,300/ Month	NNN	Now



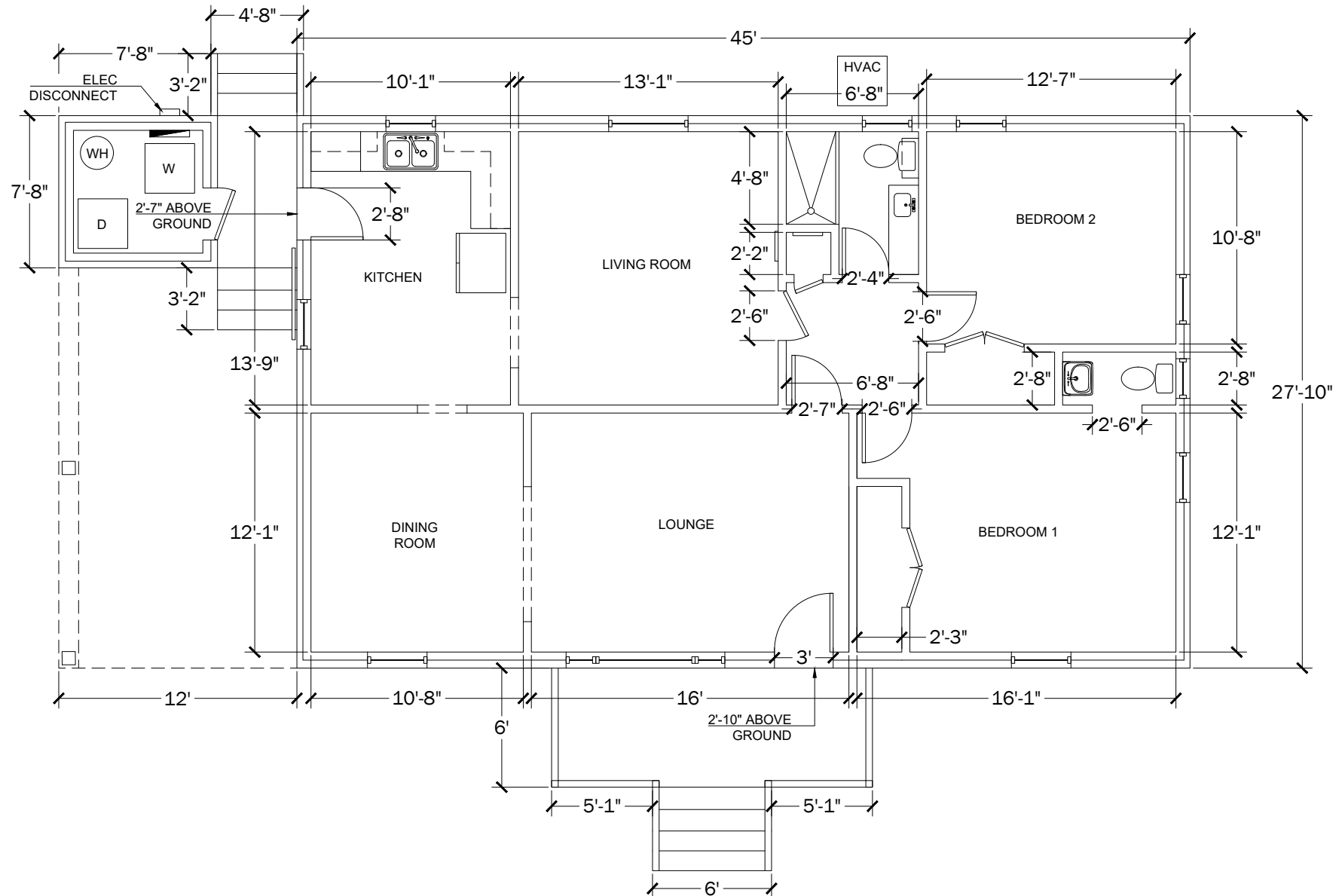
PROPERTY SPECS

AVAILABLE SF	1,252 SF
LEASE TYPE	NNN
YEAR BUILT	1960
TAX ID/APN	130-15-12-001
ZONING	N-MX_SV
MUNICIPALITY	Town of Summerville
COUNTY	Dorchester
OFFICE TYPE	Mixed Use
TRAFFIC COUNT	16,910 VPD



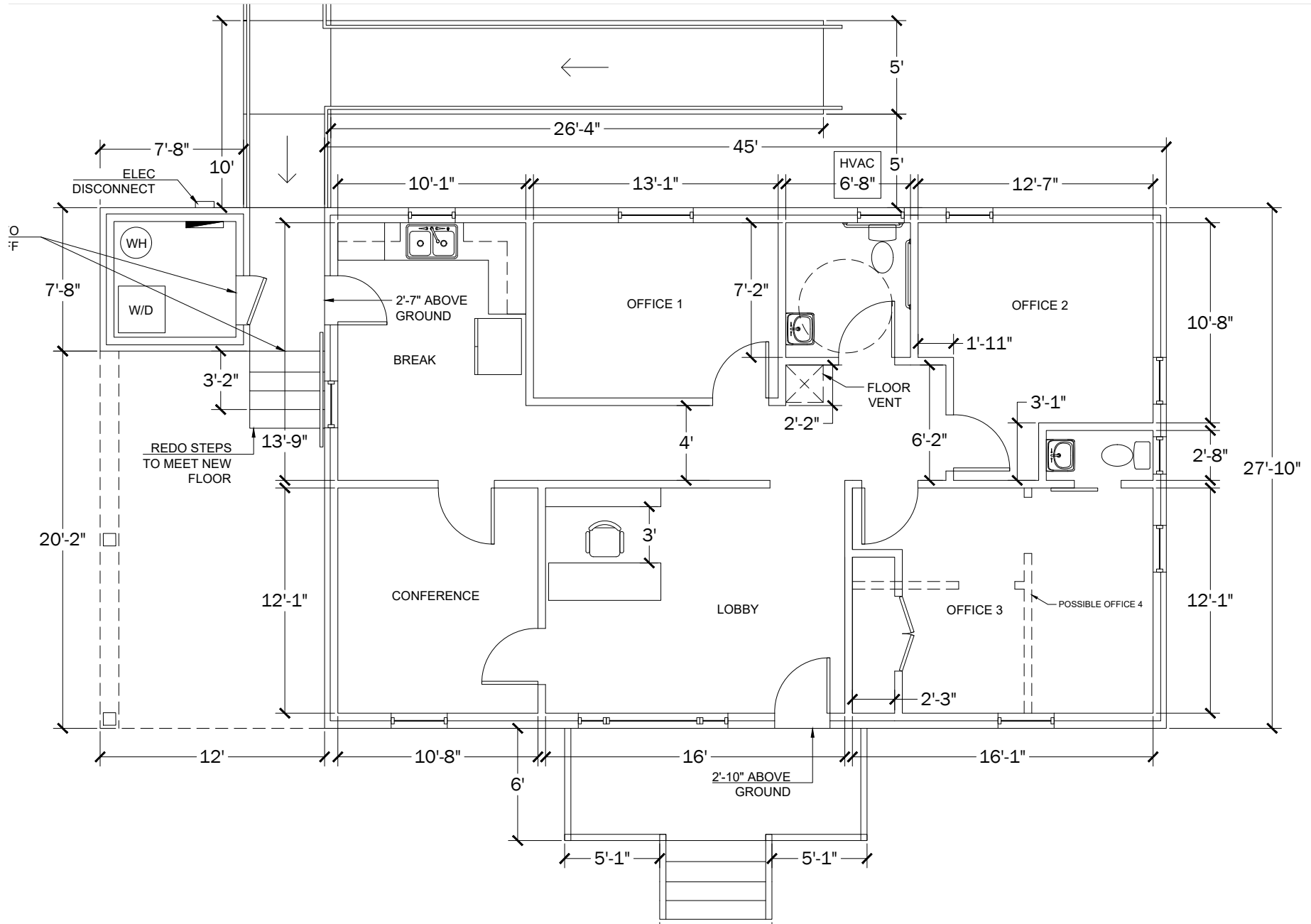
216 W 7TH NORTH ST, Summerville, SC 29483





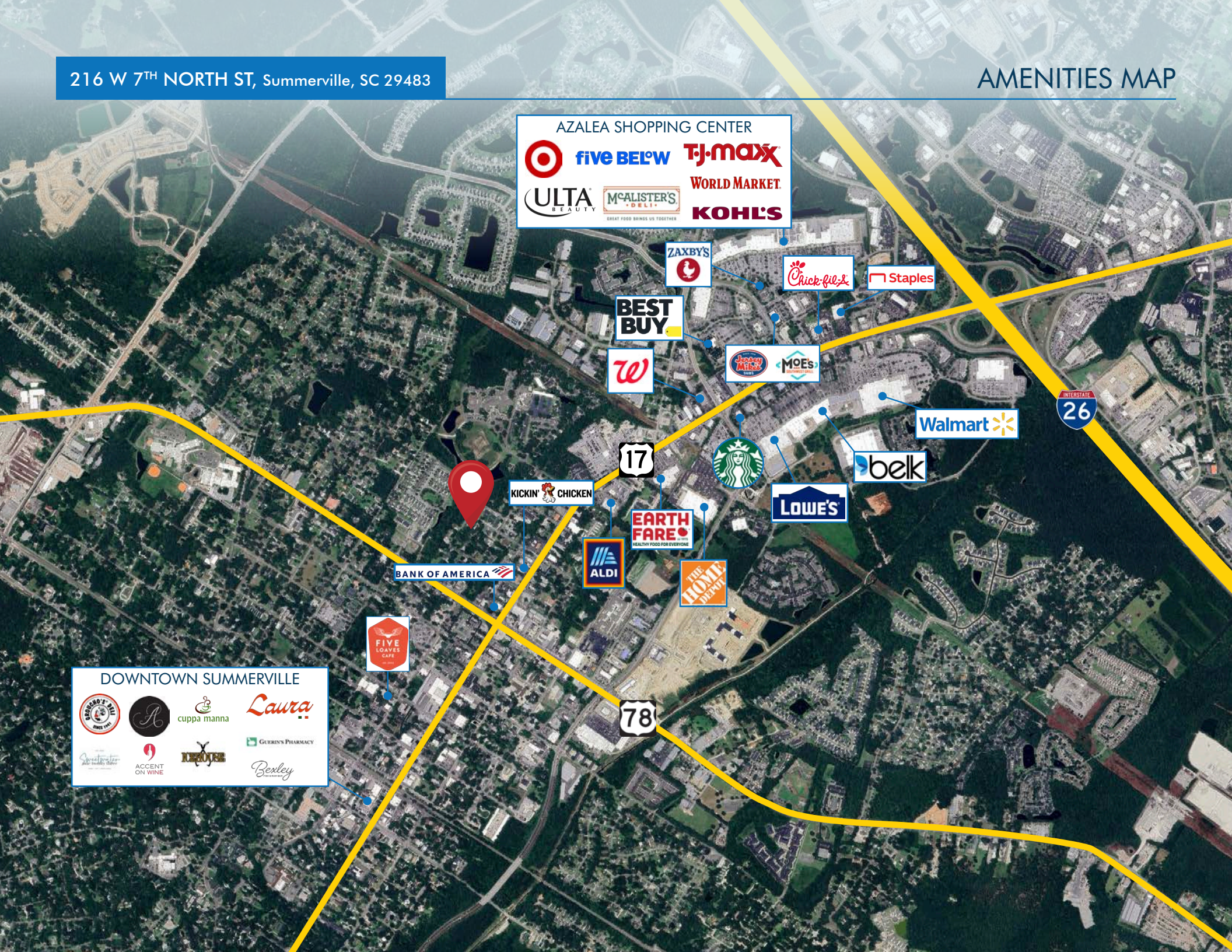
PROPOSED FLOOR PLAN

216 W 7TH NORTH ST, Summerville, SC 29483



216 W 7TH NORTH ST, Summerville, SC 29483

AMENITIES MAP



AZALEA SHOPPING CENTER



five BELOW



WORLD MARKET



KOHL'S



DOWNTOWN SUMMERVILLE



cuppa manna

Laura



Bexley

DEMOGRAPHICS

216 W 7TH NORTH ST, Summerville, SC 29483

One mile

Three mile

Five mile



POPULATION

7,525

44,985

126,969



TOTAL BUSINESSES

1,058

2,340

4,371



MEDIAN AGE

40.7

39.4

38



MEDIAN HOUSEHOLD INCOME

\$71,538

\$79,167

\$79,981



LEASING CONTACT:

Taylor Sekanovich

Senior Associate

843.812.8407

taylor.sekanovich@harborcommercialpartners.com

Harbor
COMMERCIAL PARTNERS

harborcommercialpartners.com