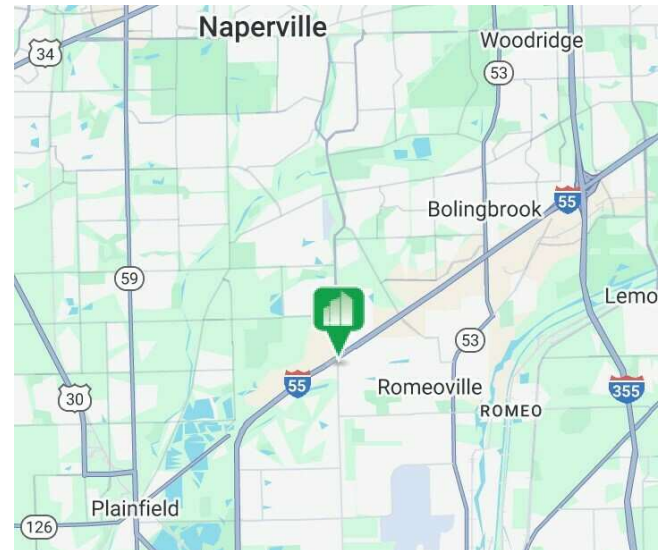
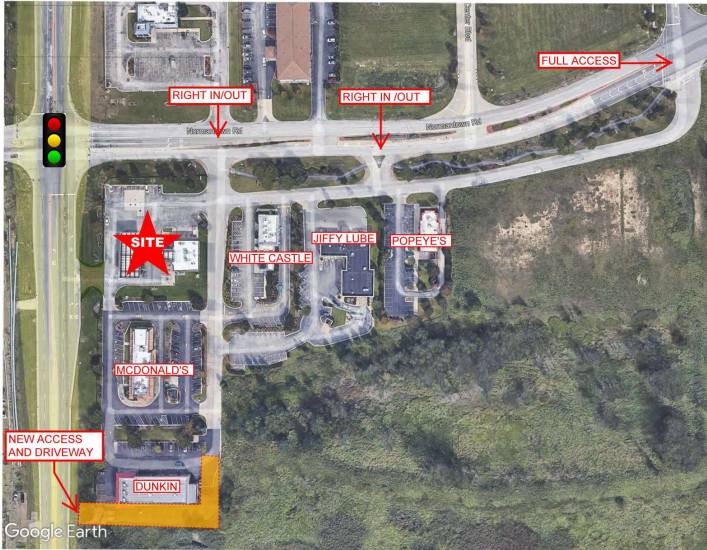


Retail Property For Lease



679 N WEBER RD

ROMEOVILLE, IL 60446



**OFFERING SUMMARY**

Available SF: 2,940 SF

Lease Rate: \$32.00 SF/yr (NNN)

Lot Size: 1.34 Acres

Year Built: 1997

Zoning: C

**PROPERTY HIGHLIGHTS**

- Excellent Weber Road frontage, close to I-55 interchange
- Signalized hard corner of Weber Rd and Normantown Rd.
- High visibility and traffic counts
- Adjacent to McDonald's

**LOCATION OVERVIEW**

Join area retailers including McDonald's, Dunkin, White Castle, Popeye's, Grease Monkey and more. Across from new development with QuikTrip.

**DEMOGRAPHICS**

	1 MILE	5 MILES	10 MILES
Total Households	2,159	52,003	254,158
Total Population	5,280	158,775	704,962
Average HH Income	\$81,447	\$115,269	\$110,915

