

8150

SIERRA COLLEGE BLVD.
Roseville, CA

8150

8150

Edward Jones

PROFESSOR
JOHN HENDERSON

BEZ LAW FIRM, P.C.
COMMERCIAL REAL ESTATE

JERDE
WWW.JERDECRE.COM

JOSIE JERDE

lic. 01344316

(916) 849-1514

josie@jerdecre.com

8150 SIERRA COLLEGE BLVD.

JERDE

RE/MAX COMMERCIAL
2998 DOUGLAS BLVD., SUITE 125,
ROSEVILLE, CA 95661

WWW.JERDECRE.COM

JOSIE JERDE

lic. 01344316

(916) 849-1514

josie@jerdecre.com

THE INFORMATION CONTAINED IN THIS COMMUNICATION IS STRICTLY CONFIDENTIAL. THIS INFORMATION HAS BEEN OBTAINED FROM SOURCES BELIEVED TO BE RELIABLE BUT HAS NOT BEEN VERIFIED. NO WARRANTY OR REPRESENTATION, EXPRESS OR IMPLIED, IS MADE AS TO THE CONDITION OF THE PROPERTY OR PROPERTIES REFERENCED HEREIN OR AS TO THE ACCURACY OR COMPLETENESS OF THE INFORMATION CONTAINED HEREIN, AND SAME IS SUBMITTED SUBJECT TO ERRORS, OMISSIONS, CHANGE OF PRICE, RENTAL OR OTHER CONDITIONS, WITHDRAWAL WITHOUT NOTICE, AND TO ANY SPECIAL LISTING CONDITIONS IMPOSED BY THE PROPERTY OWNER(S). ANY PROJECTIONS, OPINIONS OR ESTIMATES ARE SUBJECT TO UNCERTAINTY AND DO NOT SIGNIFY CURRENT OR FUTURE PROPERTY PERFORMANCE.



THE BUILDING

SIGNAGE
AVAILABLE

40+
NEARBY AMENITIES

PROFESSIONAL
FINISHES

AMPLE
PARKING

8150 Sierra College Blvd. is a two story premier office building located in Roseville, CA. It is located near the corner of the high traffic intersection of Douglas Blvd. and Sierra College Blvd. The building is a short drive to and from Interstate 80 and offers ample parking in front of the building as well as on the side and rear, providing easy access for employees and visitors. The property is of modern construction featuring professional interior finishes throughout the common area lobbies, hallways, and restrooms. Abundant amenities nearby include a variety of dining options and professional amenities for your day-to-day business needs.



PROPERTY INFO

ADDRESS: 8150 SIERRA COLLEGE BLVD.,
ROSEVILLE, CA 95661

DATE AVAILABLE: AVAILABLE NOW
BASE RENT: CALL FOR PRICING

EXCELLENT WINDOW LINES WITH NATURAL LIGHT
HIGH-END FINISHES THROUGHOUT THE COMMON AREAS
LOCATED IN THE HIGHLY DESIRED ROSEVILLE MARKET



8150 SIERRA COLLEGE BLVD.





BUILDING LOCATION

MODERN
CONVENIENCES

40+
NEARBY AMENITIES

THRIVING
ECONOMIC HUB

100
RESTAURANTS

Nestled in Placer County, Roseville, California, offers a compelling blend of comfortable living, a thriving job market, and easy access to everything you need. Whether you're a young professional starting a career, a family looking for a safe and nurturing environment, or a retiree seeking an active lifestyle, Roseville promises a place to call home that fulfills your aspirations. Roseville boasts a dynamic and diverse economy. The city is a hub for healthcare, technology, construction, and education, offering a wealth of employment opportunities. With a highly skilled workforce and a commitment to innovation, Roseville attracts top companies, fostering a thriving job market for professionals across various industries. Roseville is a food paradise. From upscale restaurants to casual cafes and hidden culinary gems, Roseville caters to every palate.

THE ROSEVILLE SUBMARKET

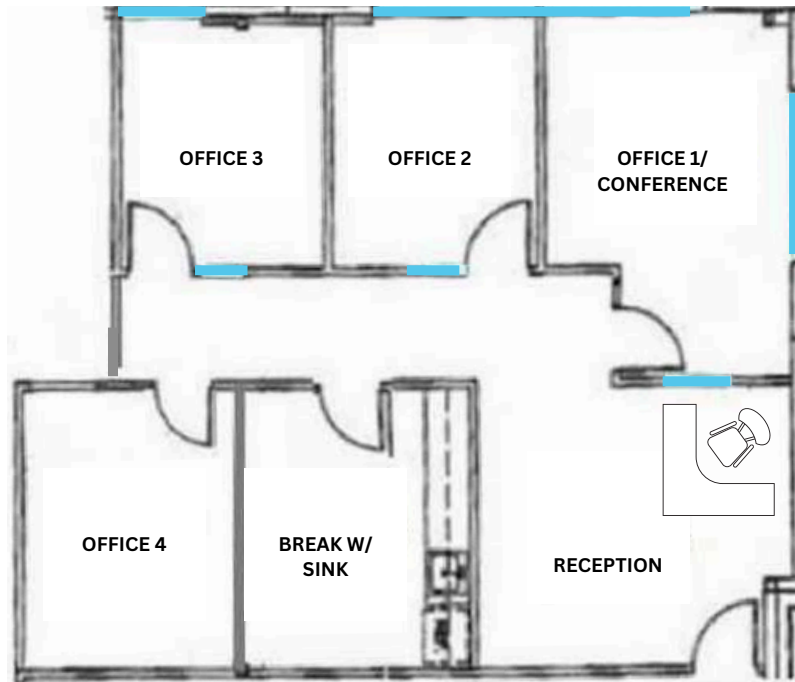
Roseville's strategic location connects you to everything you need. Enjoy the benefits of a growing city while remaining close to the excitement of Sacramento, just a short drive away. Easy access to major highways allows for effortless exploration of the surrounding areas, making weekend getaways and regional adventures a breeze. Roseville caters to those who enjoy staying active. Numerous fitness centers, yoga studios, and sports facilities offer a variety of ways to stay in shape. Community events like charity walks and runs promote a healthy lifestyle and a sense of camaraderie. Roseville, California offers more than just a place to live; it offers a thriving community where you can establish your roots, pursue your career aspirations, and raise a family in a safe and nurturing environment.



SUITE 250-A

+/- 1,200 SF

*READY FOR OCCUPANCY



JOSIE JERDE

lic. 01344316
(916) 849-1514

josie@jerdecre.com

 GLASS LINE





NEARBY AMENITIES

Popular amenities near 8150 Sierra College Blvd. (PARTIAL LIST)



