

For Lease

Vineland Business Center

Orlando, FL 32811



**AVISON
YOUNG**

Sean DuPree, CCIM
Senior Vice President
407.440.6662
sean.dupree@avisonyoung.com

Lisa Bailey, SIOR
Principal
407.440.6645
lisa.bailey@avisonyoung.com

avisonyoung.com



Introduction

Located at 3712-3728 Vineland Road, this multi-tenant grade-level industrial building benefits from a prime position just north of the intersection of Vineland Road and Conroy Road at I-4 and is located within the third largest industrial submarket in the region. The 36,585 SF± property offers exceptional accessibility and visibility within the heart of Orlando's bustling commercial corridor. With excellent connectivity to I-4, Florida's Turnpike, and the 408 Expressway, this property ensures quick access to most of the Metro Orlando area.

PROPERTY HIGHLIGHTS

GRADE LEVEL DOORS: 12'X12'

ZONING: I-P (CITY OF ORLANDO)

CLEAR HEIGHT: 16'-20'

YEAR BUILT: 1984

PARKING RATIO: 1.63/1,000

**CONSTRUCTION: CONCRETE BLOCK
& METAL**



Nearby Amenities

Vineland Business Center
Office/Industrial Space For Lease
3712-3728 Vineland Road
Orlando, Florida 32811



**AVISON
YOUNG**

Sean DuPree, CCIM
Senior Vice President
407.440.6662
sean.dupree@avisonyoung.com

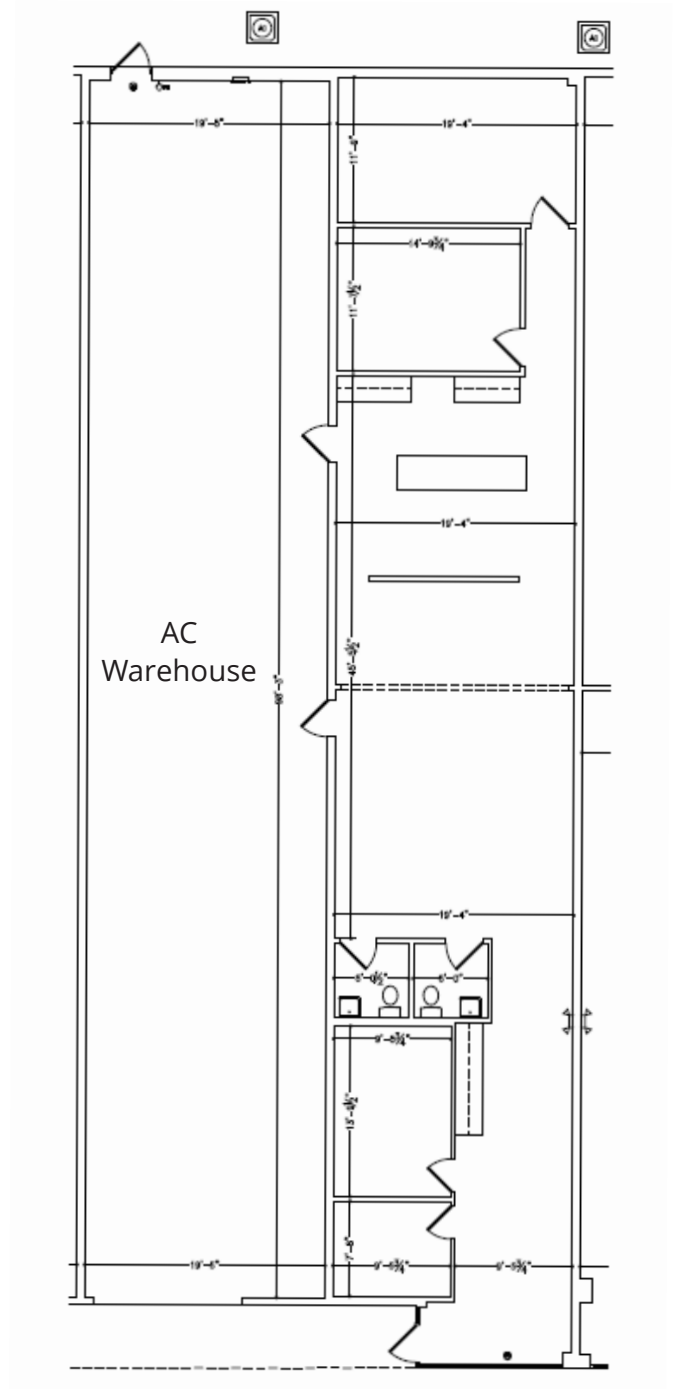
Lisa Bailey, SIOR
Principal
407.440.6645
lisa.bailey@avisonyoung.com

avisonyoung.com

Floorplans

Vineland Business Center
Office/Industrial Space For Lease
3712-3728 Vineland Road
Orlando, Florida 32811

Vineland Business Center
Unit 4
4,065± sf
Office/Warehouse Space



**AVISON
YOUNG**

Sean DuPree, CCIM
Senior Vice President
407.440.6662
sean.dupree@avisonyoung.com

Lisa Bailey, SIOR
Principal
407.440.6645
lisa.bailey@avisonyoung.com

avisonyoung.com