

MEDICAL
OFFICE
SPACE

FOR
SUBLEASE



TRANSWESTERN

REAL ESTATE
SERVICES

7400 Fannin St

Houston, TX 77054

SUITE 1050



Building Features:

- Situated on METRORail Red line, a North-South light rail that connects the TMC to Downtown Houston and NRG Park
- Class A medical/office tower
- Accessible by Hwy 288, Interstate 69 and Loop 610
- Access to Memorial Hermann Hospital via skybridge
- On-site pharmacy

Availability:

Suite 1050 - 12,075 SF

Lease Rate:

Contact Broker

Lease Expiration:

September 2028



Sandra Wolters

Senior Associate

832.671.7717

Sandra.Wolters@transwestern.com

The information provided herein was obtained from sources believed reliable; however, Transwestern makes no guarantees, warranties or representations as to the completeness of accuracy thereof. The presentation of this property is submitted subject to errors, omissions, change of price or conditions, prior to sale or lease, or withdrawal without notice. Copyright © 2023 Transwestern.

7400 Fannin St

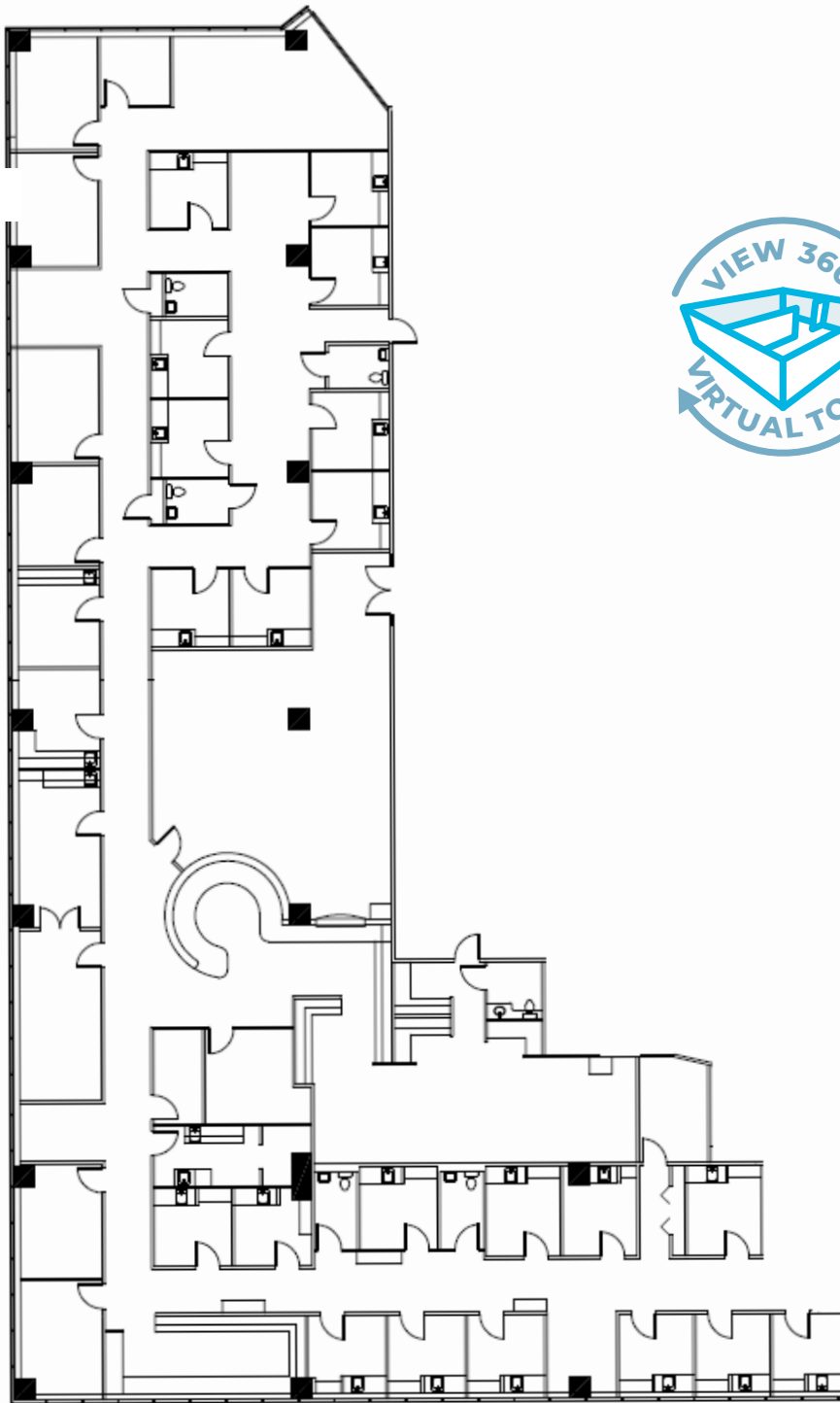
Houston, TX 77054

Sublease
Suite 1050 | 12,075 SF



TRANSWESTERN

REAL ESTATE
SERVICES



Sandra Wolters
Senior Associate
(713) 231-1581
Sandra.Wolters@transwestern.com

The information provided herein was obtained from sources believed reliable; however, Transwestern makes no guarantees, warranties or representations as to the completeness of accuracy thereof. The presentation of this property is submitted subject to errors, omissions, change of price or conditions, prior to sale or lease, or withdrawal without notice. Copyright © 2023 Transwestern.