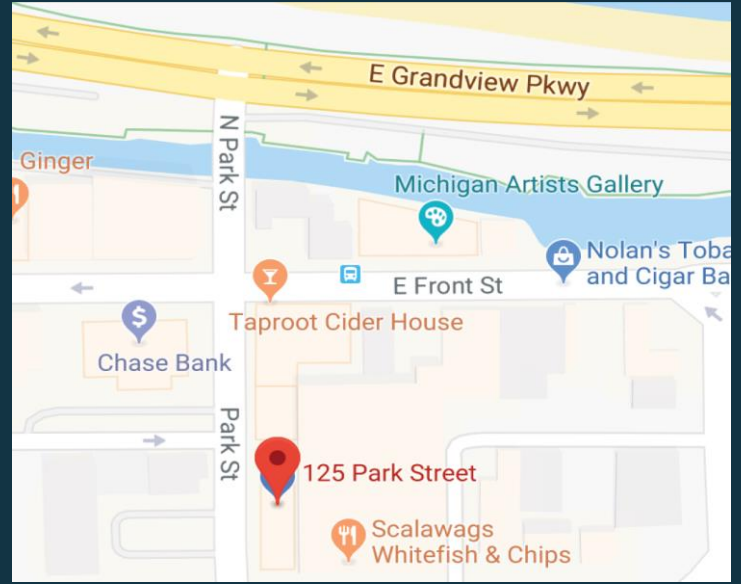




**SNOWDEN**  
C o m p a n i e s

Available for Lease  
125 S Park Street  
Traverse City, MI 49684



## Available for Lease

Suite #270 1482 sq. ft. 2nd Floor Office

Class "A" office space in a prime downtown location

Highly visible & centrally located  
near shops, theatres, dining, banks,  
the courthouse, &  
the Park Place Hotel

Adjacent to the Hardy Parking Deck

*For questions, please contact:*

Jerry Snowden  
at 231.932.1700 ext 230 or via cell 231.632.6007

[jsnowden@snowdencompanies.com](mailto:jsnowden@snowdencompanies.com)

125 Park St. Suite 290  
Traverse City, MI 49684

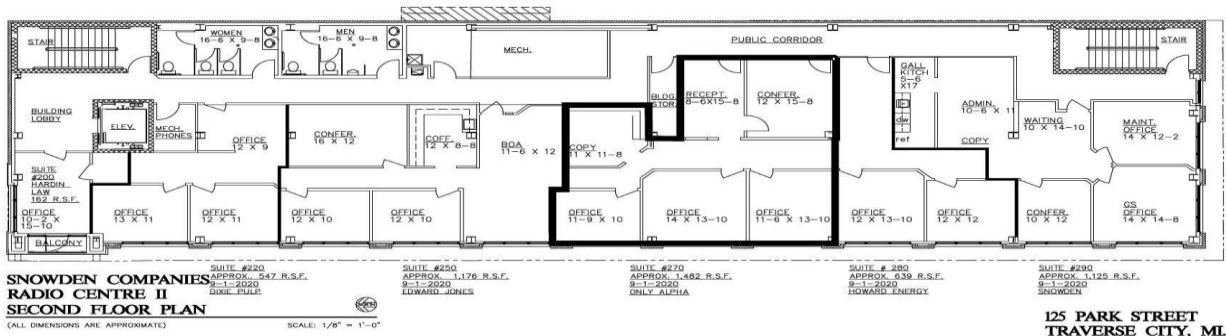
[www.snowdencompanies.com](http://www.snowdencompanies.com)

# Radio Centre II

125 Park St is a Class "A" office building located in the heart of downtown Traverse City immediately adjacent to a 529-vehicle parking deck.

In addition to its superior location, the building offers the following:

- High profile corporate image close to restaurants, banks, shops, courthouse, Park Place Hotel, Grand Traverse Bay
- Individual after-hours entry code access with remote visitor telecom system
- Remote-monitored heating and cooling for trouble-free temperature control
- Deluxe suite entry package: 10-light cherrywood doors; side lights; brass hardware; parabolic lighting
- Professional lobby with local artwork and live plants
- Wonderful views, many windows, and plenty of natural light
- Full sprinkle fire protection system with visual and audible fire alarm
- Electronic security with mag locks at all access points
- On-site management; 24-hour on-call service
- Cable and/or fiberoptic internet available
- ADA compliant. Handicap accessible
- Optional reserved parking



Suite 270  
 Approx. 1,482 RSF

