

HUNTWOOD BUSINESS CENTER

30964-30998 HUNTWOOD AVENUE | HAYWARD, CA

**LEE &
ASSOCIATES**
COMMERCIAL REAL ESTATE SERVICES



EXCLUSIVE AGENTS:

Wesley Dolan, Associate

E \\ wdolan@lee-associates.com

P \\ 510.903.7609 | LIC# 02129144

Nathan Vance, Principal

E \\ nvance@lee-associates.com

P \\ 510.907.3021 | LIC# 02039163

Lee & Associates Oakland Commercial Real Estate \ 555 12th Street, Suite 1725, Oakland, CA 94607 \ www.lee-associates.com

All information furnished regarding property for sale, rental or financing is from sources deemed reliable, but no warranty or representation is made to the accuracy thereof and same is submitted to errors, omissions, change of price, rental or other conditions prior to sale, lease or financing or withdrawal without notice. No liability of any kind is to be imposed on the broker herein.

HUNTWOOD BUSINESS CENTER

30964-30998 HUNTWOOD AVENUE | HAYWARD, CA



<i>BUILDING</i>	<i>UNIT</i>	<i>SF</i>	<i>OFFICE</i>	<i>LEASE RATE</i>	<i>OPEX</i>
BLDG 1 - 30998	#105	2,250±	10%	\$1.40/SF, NNN	\$0.52/SF
BLDG 1 - 30998	#109	986±	100%	\$1.70/SF, NNN	\$0.52/SF
BLDG 2 - 30982	#203	2,250±	10%	\$1.40/SF, NNN	\$0.52/SF
BLDG 3 - 30970	#306	1,212±	10%	\$1.40/SF, NNN	\$0.52/SF
BLDG 3 - 30970	#307	1,364±	10%	\$1.40/SF, NNN	\$0.52/SF
BLDG 3 - 30970	#309	1,212±	10%	\$1.40/SF, NNN	\$0.52/SF

CURRENT AVAILABILITIES:

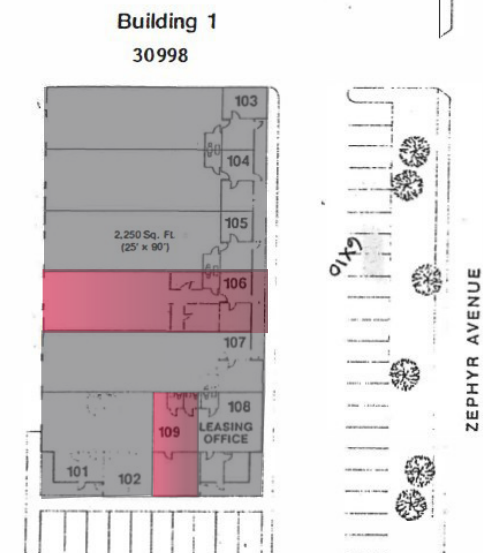
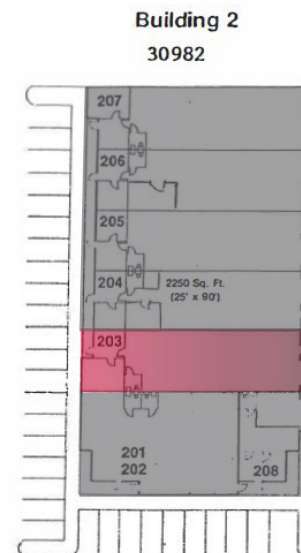
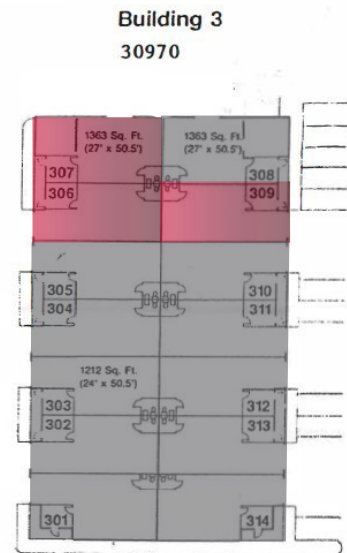
986± SF - 2,250± SF



AVAILABLE



OCCUPIED



HUNTWOOD AVENUE

ZEPHYR AVENUE

HUNTWOOD BUSINESS CENTER

30964-30998 HUNTWOOD AVENUE | HAYWARD, CA

30998 #105 - 2,250± SF

- 2,250± SF Warehouse Space
- 10% Office
- Reception Area
- 1 Private Office
- 1 Restroom
- 1 Drive-In Door
- Lease Rate: \$1.40/SF, NNN + \$0.52/SF, Opex
- Available Immediately



EXCLUSIVE AGENTS:

Wesley Dolan, Associate

E \\ wdolan@lee-associates.com

P \\ 510.903.7609 | LIC# 02129144

Nathan Vance, Principal

E \\ nvance@lee-associates.com

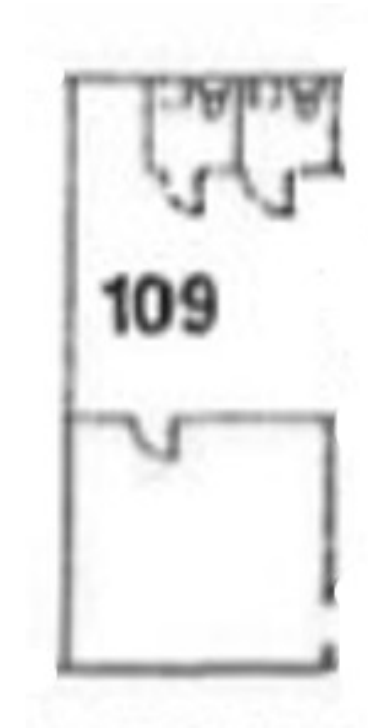
P \\ 510.907.3021 | LIC# 02039163

HUNTWOOD BUSINESS CENTER

30964-30998 HUNTWOOD AVENUE | HAYWARD, CA

30998 #109 - 986± SF

- 986± SF Office Space
- 100% Office
- Reception Area
- 4 Private Offices
- 1 Restroom
- Lease Rate: \$1.70/SF, NNN + \$0.52/SF, Opex
- Available: 12/1/2025



EXCLUSIVE AGENTS:

Wesley Dolan, Associate

E \\ wdolan@lee-associates.com

P \\ 510.903.7609 | LIC# 02129144

Nathan Vance, Principal

E \\ nvance@lee-associates.com

P \\ 510.907.3021 | LIC# 02039163

HUNTWOOD BUSINESS CENTER

30964-30998 HUNTWOOD AVENUE | HAYWARD, CA

30982 #203 - 2,250± SF

- 2,250± SF Warehouse Space
- 10% Office
- Reception Area
- 1 Private Office
- 1 Restroom
- 1 Drive-In Door
- Lease Rate: \$1.40/SF, NNN + \$0.52/SF, Opex
- Available: 12/1/2025



EXCLUSIVE AGENTS:

Wesley Dolan, Associate

E \\ wdolan@lee-associates.com

P \\ 510.903.7609 | LIC# 02129144

Nathan Vance, Principal

E \\ nvance@lee-associates.com

P \\ 510.907.3021 | LIC# 02039163

HUNTWOOD BUSINESS CENTER

30964-30998 HUNTWOOD AVENUE | HAYWARD, CA

30970 #306 - 1,212± SF

- 1,212± SF Warehouse Space
- 10% Office
- Reception Area
- 1 Private Office
- 1 Restroom
- 1 Drive-In Door
- Lease Rate: \$1.40/SF, NNN + \$0.52/SF, Opex
- Available Immediately



EXCLUSIVE AGENTS:

Wesley Dolan, Associate

E \\ wdolan@lee-associates.com

P \\ 510.903.7609 | LIC# 02129144

Nathan Vance, Principal

E \\ nvance@lee-associates.com

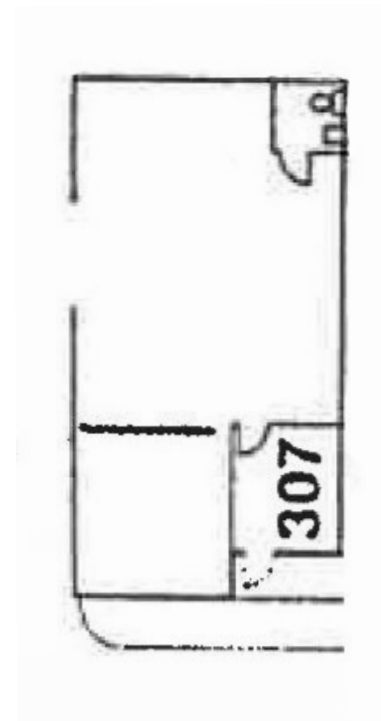
P \\ 510.907.3021 | LIC# 02039163

HUNTWOOD BUSINESS CENTER

30964-30998 HUNTWOOD AVENUE | HAYWARD, CA

30970 #307 - 1,364± SF

- 1,364± SF Warehouse Space
- 10% Office
- Reception Area
- 1 Restroom
- 1 Drive-In Door
- Lease Rate: \$1.40/SF, NNN + \$0.52/SF, Opex
- Available: 12/1/2025



EXCLUSIVE AGENTS:

Wesley Dolan, Associate

E \\ wdolan@lee-associates.com

P \\ 510.903.7609 | LIC# 02129144

Nathan Vance, Principal

E \\ nvance@lee-associates.com

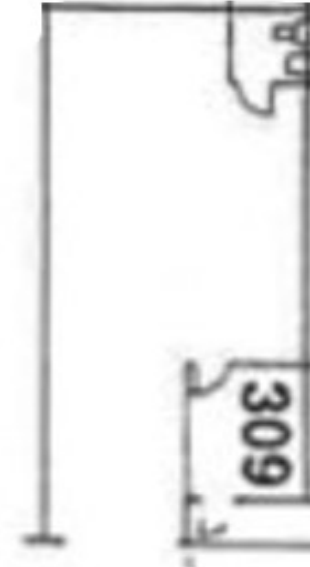
P \\ 510.907.3021 | LIC# 02039163

HUNTWOOD BUSINESS CENTER

30964-30998 HUNTWOOD AVENUE | HAYWARD, CA

30970 #309 - 1,212± SF

- 1,212± SF Warehouse Space
- 10% Office
- Reception Area
- 1 Restroom
- 1 Drive-In Door
- Lease Rate: \$1.40/SF, NNN + \$0.52/SF, Opex
- Available Immediately



EXCLUSIVE AGENTS:

Wesley Dolan, Associate

E \\ wdolan@lee-associates.com

P \\ 510.903.7609 | LIC# 02129144

Nathan Vance, Principal

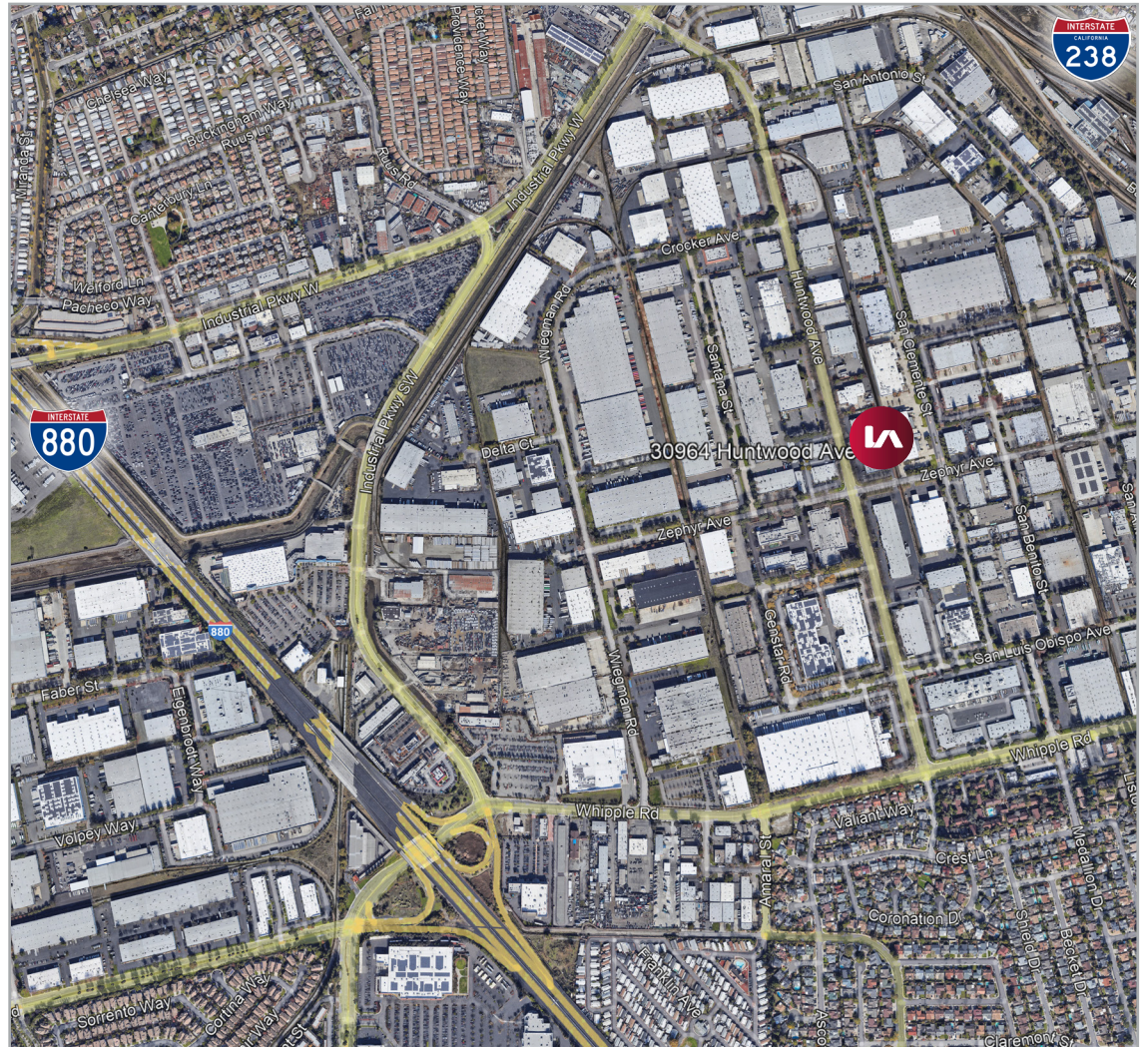
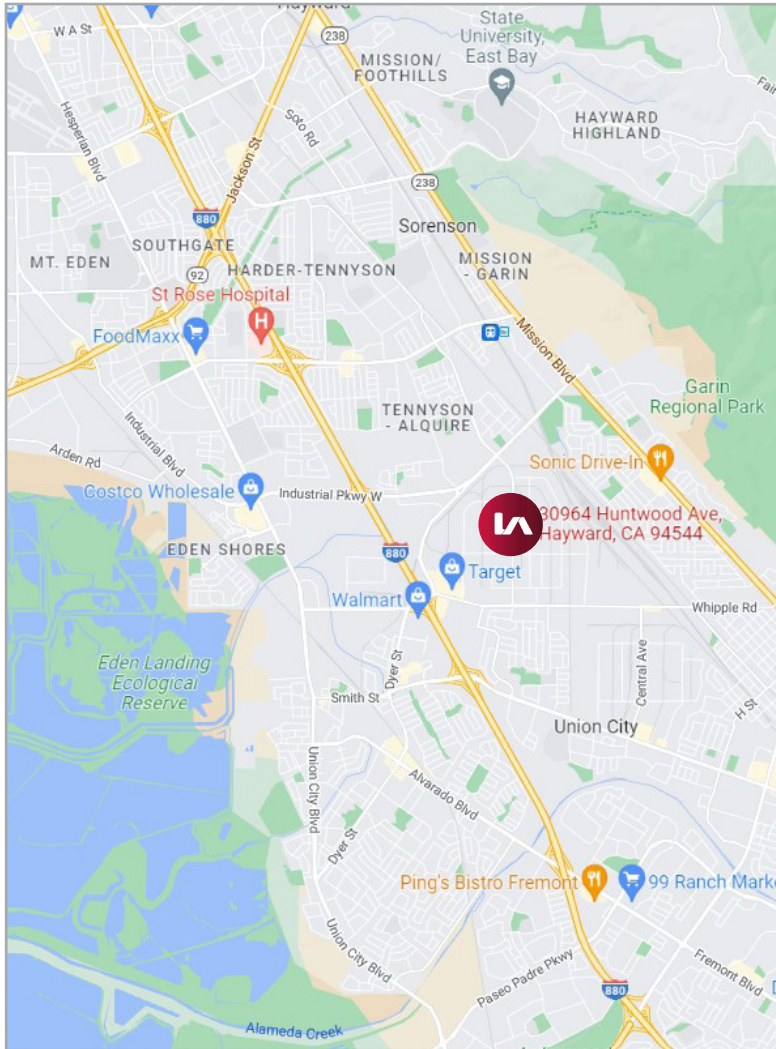
E \\ nvance@lee-associates.com

P \\ 510.907.3021 | LIC# 02039163

HUNTWOOD BUSINESS CENTER

30964-30998 HUNTWOOD AVENUE | HAYWARD, CA

LEE & ASSOCIATES
COMMERCIAL REAL ESTATE SERVICES



EXCLUSIVE AGENTS:

Wesley Dolan, Associate

E \\ wdolan@lee-associates.com

P \\ 510.903.7609 | LIC# 02129144

Nathan Vance, Principal

E \\ nvance@lee-associates.com

P \\ 510.907.3021 | LIC# 02039163

Lee & Associates Oakland Commercial Real Estate \ 555 12th Street, Suite 1725, Oakland, CA 94607 \ www.lee-associates.com

All information furnished regarding property for sale, rental or financing is from sources deemed reliable, but no warranty or representation is made to the accuracy thereof and same is submitted to errors, omissions, change of price, rental or other conditions prior to sale, lease or financing or withdrawal without notice. No liability of any kind is to be imposed on the broker herein.