



# 299 Forest Ave Paramus, NJ



**AVAILABLE IMMEDIATELY | MULTIPLE SUITES | BUSY MAIN ROAD**

**Prime Paramus location | Professional building with ample parking.**

**Greg Panayoti | 201.845.6606 | [GPanayoti@NIANationalRealty.com](mailto:GPanayoti@NIANationalRealty.com)**

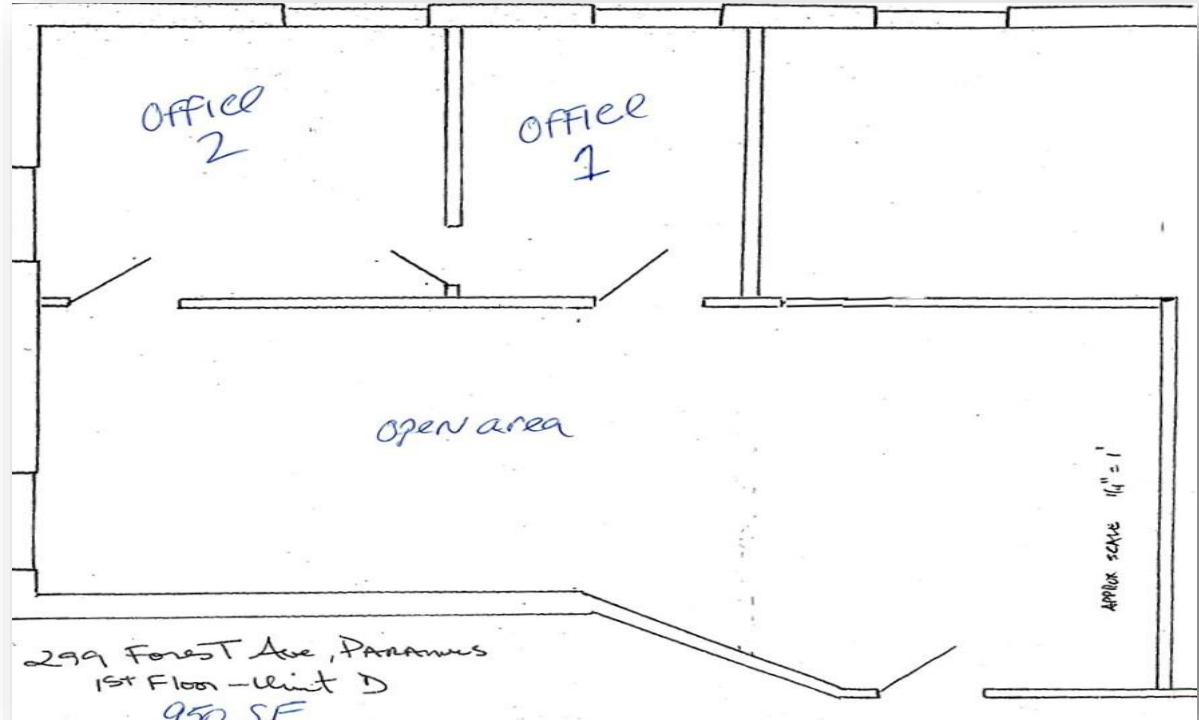
**NIA National Realty | 66 Route 17 North, Suite 900 | Paramus, NJ 07652 | 201.845.6606 | [www.NIANationalRealty.com](http://www.NIANationalRealty.com)**

**Subject to errors, omissions, changes, prior sale or withdrawal, all without notice.**

### Property Details

- SF Available: 950, 450 & 450
- Total SF: 13,000
- Ceiling Height: 10.0
- Zoning: Office / Medical / Professional
- Parking Spaces: 4/1,000
- HVAC: Included

**Call for pricing.**



Rare small professional building with 3 units available to occupy today. 1<sup>st</sup> floor is 950 SF with 2 offices and main reception area. Downstairs is 2 units 450 SF each (can be combined) w/windows providing good light plus new carpet and paint. Excellent Paramus location with ample parking at an affordable price.

Greg Panayoti | 201.845.6606 | [GPanayoti@NIANationalRealty.com](mailto:GPanayoti@NIANationalRealty.com)