

521 WEST 42ND STREET

BETWEEN 10TH & 11TH AVENUES | HELLS KITCHEN



521 WEST 42ND STREET

BETWEEN 10TH & 11TH AVENUES | HELLS KITCHEN

PROPERTY HIGHLIGHTS

- Former Medrite Urgent Care location — fully built-out, turnkey medical infrastructure in place
- Strong existing healthcare identity with established patient awareness and neighborhood recognition
- High-visibility frontage with prominent signage opportunity on a major corridor
- Efficient layout suitable for urgent care, outpatient, specialty medical, or wellness users
- Dense surrounding population with consistent foot traffic and strong daytime demand drivers
- Neighbors include:
CVS, Starbucks, Target, Success Academy, CUNY, Pod Hotel, Yotel, Chase, Dunkin', Gotham Market, Chez Josephine, Citibank, Javitts Center, Vivi Bubble Tea & more!

SIZE: 2,383 SF Ground Floor

FRONTAGE: 68'

CEILING HEIGHT: 12' 4"

POSSESSION: July 1, 2026

ASKING RENT: Upon Request

TRANSPORTATION: 



All information supplied in this marketing presentation and/or flyer is from sources deemed reliable and is furnished subject to errors, omissions, modifications, removal of listings from sale/lease and to any listing condition. Any square footage, dimensions, floor plans and/or technical data set forth are approximations and are subject to further elaboration/confirmation.

11TH AVENUE

10TH AVENUE

9TH AVENUE

WEST 47TH STREET

WEST 45TH STREET

WEST 43RD STREET

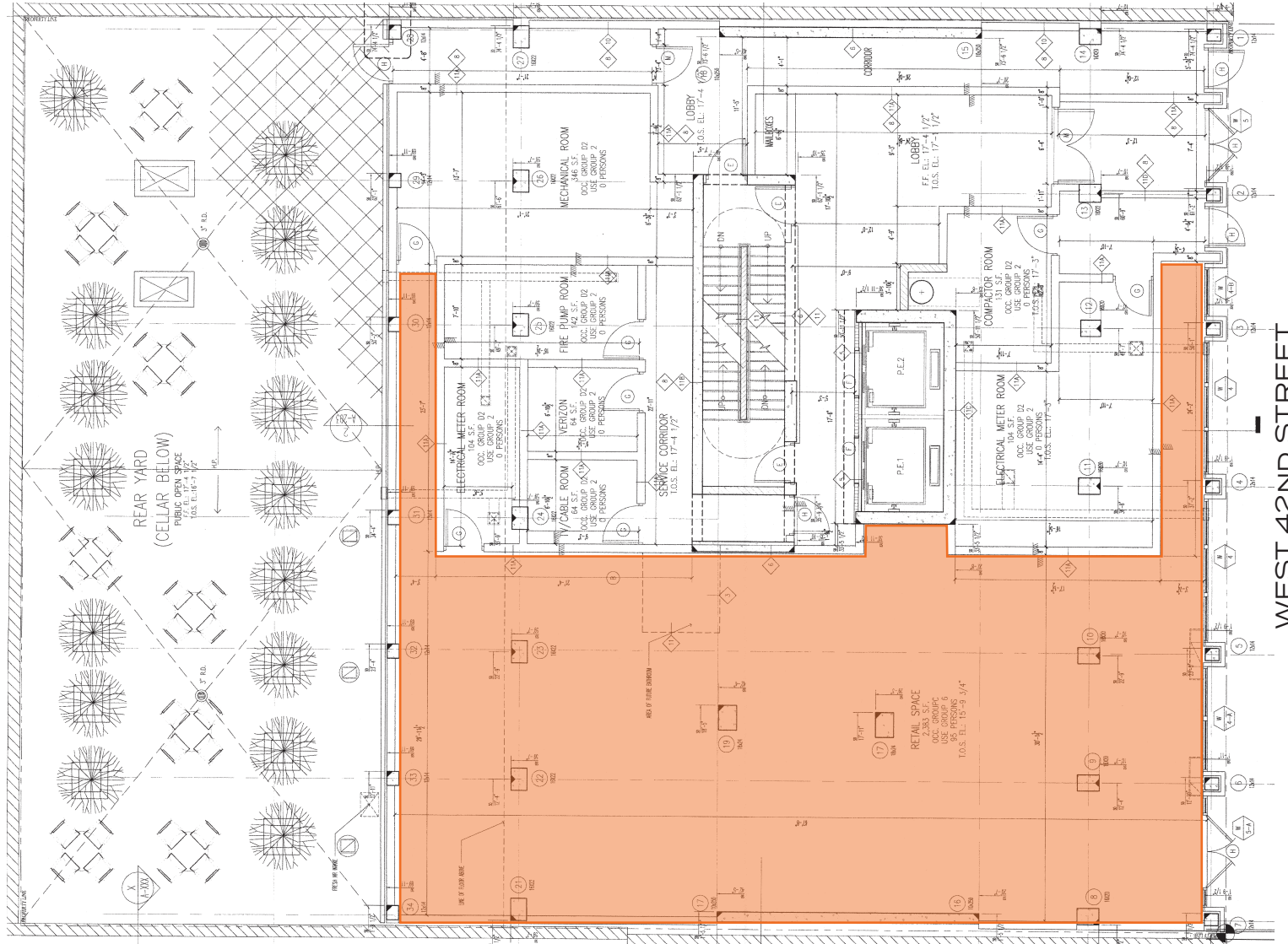
WEST 41ST STREET

WEST 39TH STREET

521 WEST 42ND STREET

BETWEEN 10TH & 11TH AVENUES | HELLS KITCHEN

FLOOR PLAN:
GROUND FLOOR - 2,383 SF



521 WEST 42ND STREET

BETWEEN 10TH & 11TH AVENUES | HELLS KITCHEN

FOR MORE INFORMATION,
PLEASE CONTACT:

DOV COLMAN

561.703.6314 | DColman@ksrny.com

MILES SABBAGH

646.894.3176 | Miles@ksrny.com

MARC SITT

917.757.8863 | MSitt@ksrny.com

