

The Right Places, The Right Spaces

SL

STRATEGIC
LOCATIONS



3128-3156 W 103rd St., Chicago, IL 60655

Divisible End-Cap Space in Jewel-Anchored Center



Divisible End-Cap for Lease



Address

3156 W 103rd St.,
Chicago, IL 60655

Availability

5,000 - 16,500 SF

NNN Sub- or Long Term Lease

- Former CVS end-cap space with Drive-Through
- Bring your ideas!
- 18' - 20' Ceiling Heights
- Jewel Co-tenancy
- Pylon sign on hard corner
- W. 103rd. St. 19,680 VPD
- S Kedzie Ave. 17,791 VPD

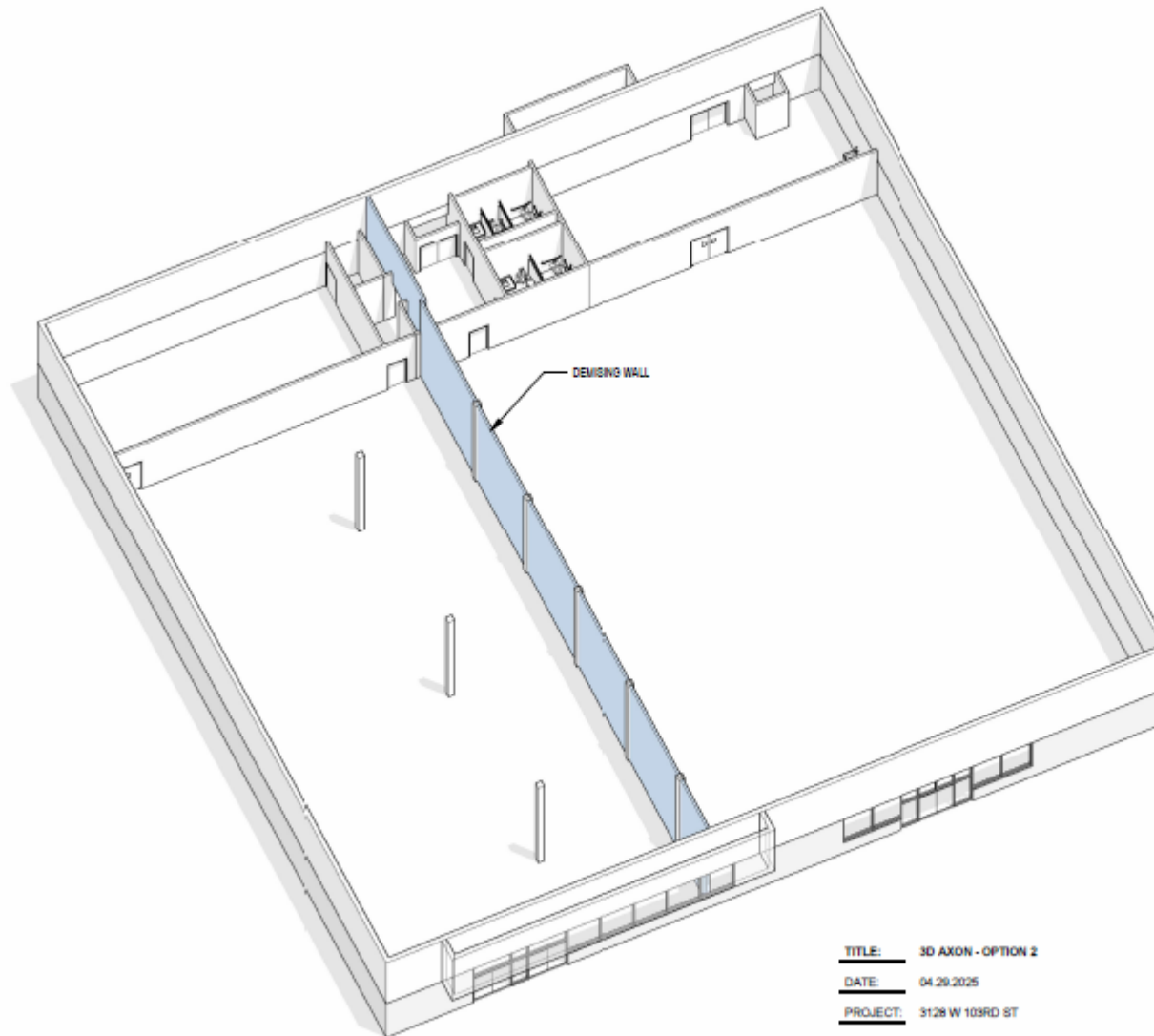


Site Visuals





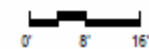
Division Options



TITLE: 3D AXON - OPTION 2
DATE: 04.29.2025
PROJECT: 3128 W 103RD ST
ADDRESS: 3128 W 103RD ST
CHICAGO, IL 60655

NOT FOR CONSTRUCTION

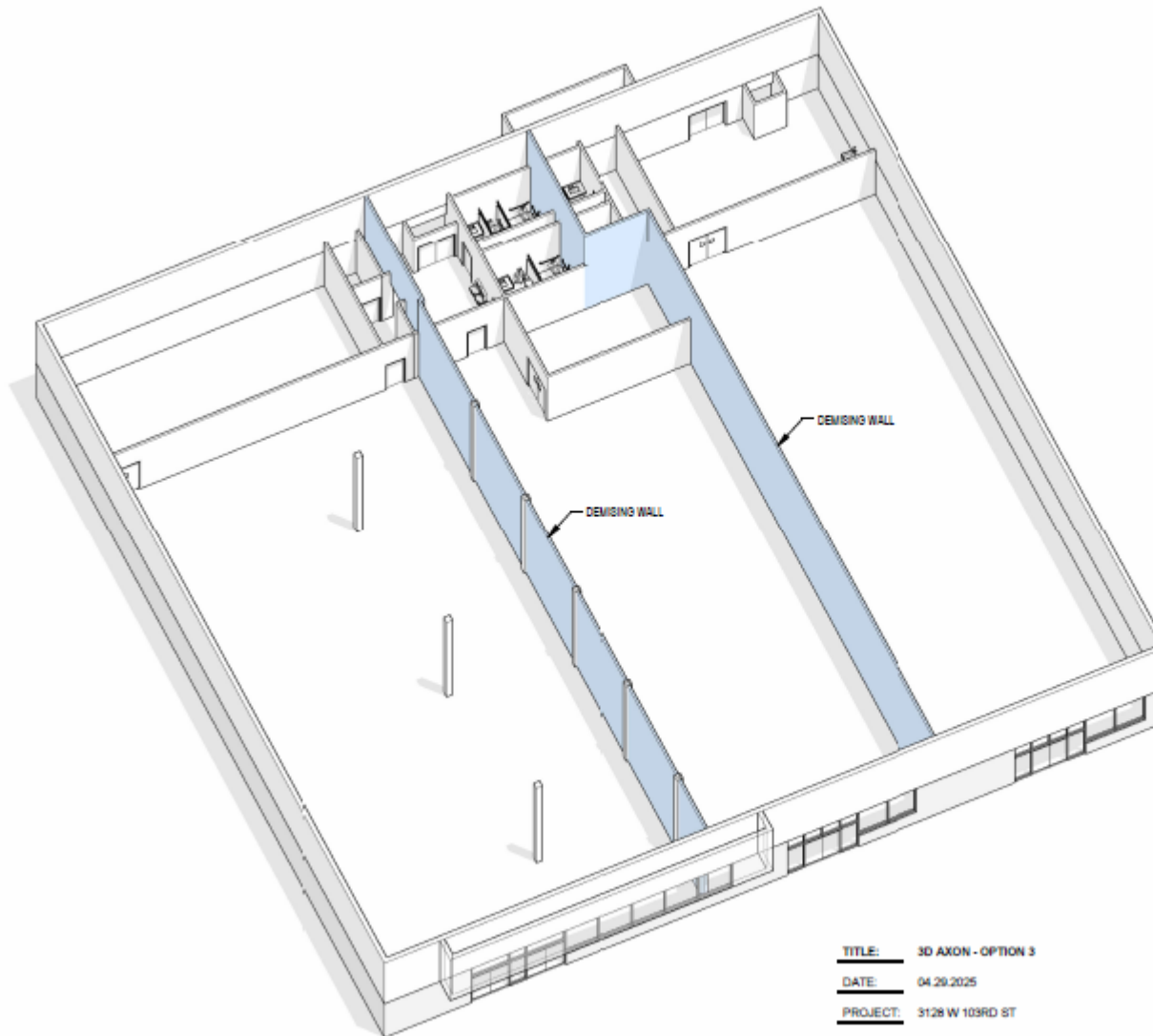
SCALE:
1/16" = 1'-0"



B.2



Site Visuals



TITLE: 3D AXON - OPTION 3
DATE: 04.29.2025
PROJECT: 3128 W 103RD ST
ADDRESS: 3128 W 103RD ST
CHICAGO, IL 60655

NOT FOR CONSTRUCTION

SCALE:
1/16" = 1'-0"



C.2

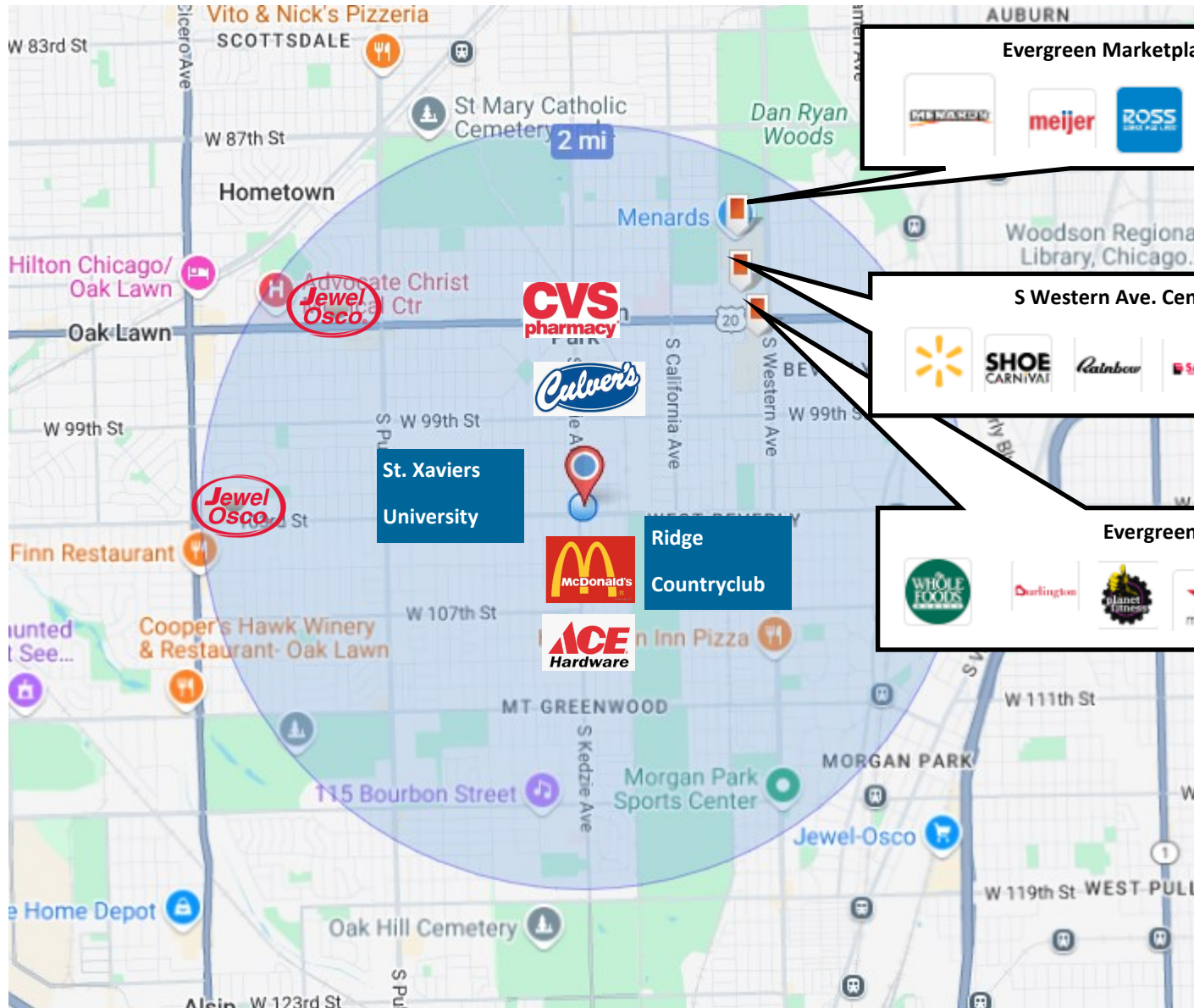


Demographics

<u>Demographics</u>	<u>1 Mile</u>	<u>3 Miles</u>	<u>5 Miles</u>
Population:	26,460	180,914	479,261
Households:	9,913	67,985	174,169
Average HH Income:	\$112,898	\$105,052	\$87,440.86



What's Nearby—2 Miles



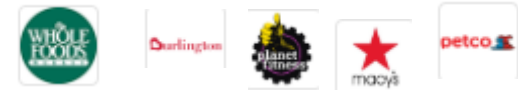
Evergreen Marketplace



S Western Ave. Center



Evergreen Plaza





Presented by

Abbey Associates, LLC

30 N. LaSalle Street, Suite 2120, Chicago, Illinois 60602

www.abbell.com

Tom Walsh

Partner/Managing Broker

tom@abbell.com

847-421-4882

Joe Sauer

President of Retail/Technology

joe@abbell.com

(312) 961-8748

The Right Places, The Right Spaces

Marketing Services by

www.strategic-locations.com



© 2024 Strategic Locations. All rights reserved. Strategic Locations provides market analysis, creative services, and tour packages to retailers and brokers nationwide. This information has been obtained from sources believed reliable but has not been verified for accuracy or completeness. You should conduct a careful, independent investigation of the property and verify all information. Any reliance on this information is solely at your own risk. All other marks displayed on this document are the property of their respective owners, and the use of such logos does not imply any affiliation with or endorsement. Photos are the property of their respective owners.