

# FOR LEASE

± 18,700 SF on ± 3.00 Acres | Industrial Service Facility



## 3910 E MCKINNEY STREET

DENTON, TEXAS 76208

**CHRIS WONG**

214.499.8741

[cwong@bradford.com](mailto:cwong@bradford.com)

**ANDREW CLARK**

972.834.9682

[aclark@bradford.com](mailto:aclark@bradford.com)

**LOGAN WEATHERFORD**

214.709.2208

[lweatherford@bradford.com](mailto:lweatherford@bradford.com)



# PROPERTY HIGHLIGHTS

3910 E MCKINNEY ST

DENTON | TX 76208



**± 3.00 Acres**



**2 Buildings**



**± 18,700 SF**

- ± 3,000 SF - Office
- ± 15,700 SF - Warehouse



**3 Grade-Level Doors**

- 12' W x 16' H



**16' 5" Clear Height**



**New LED Lights**



**Fully Fenced**

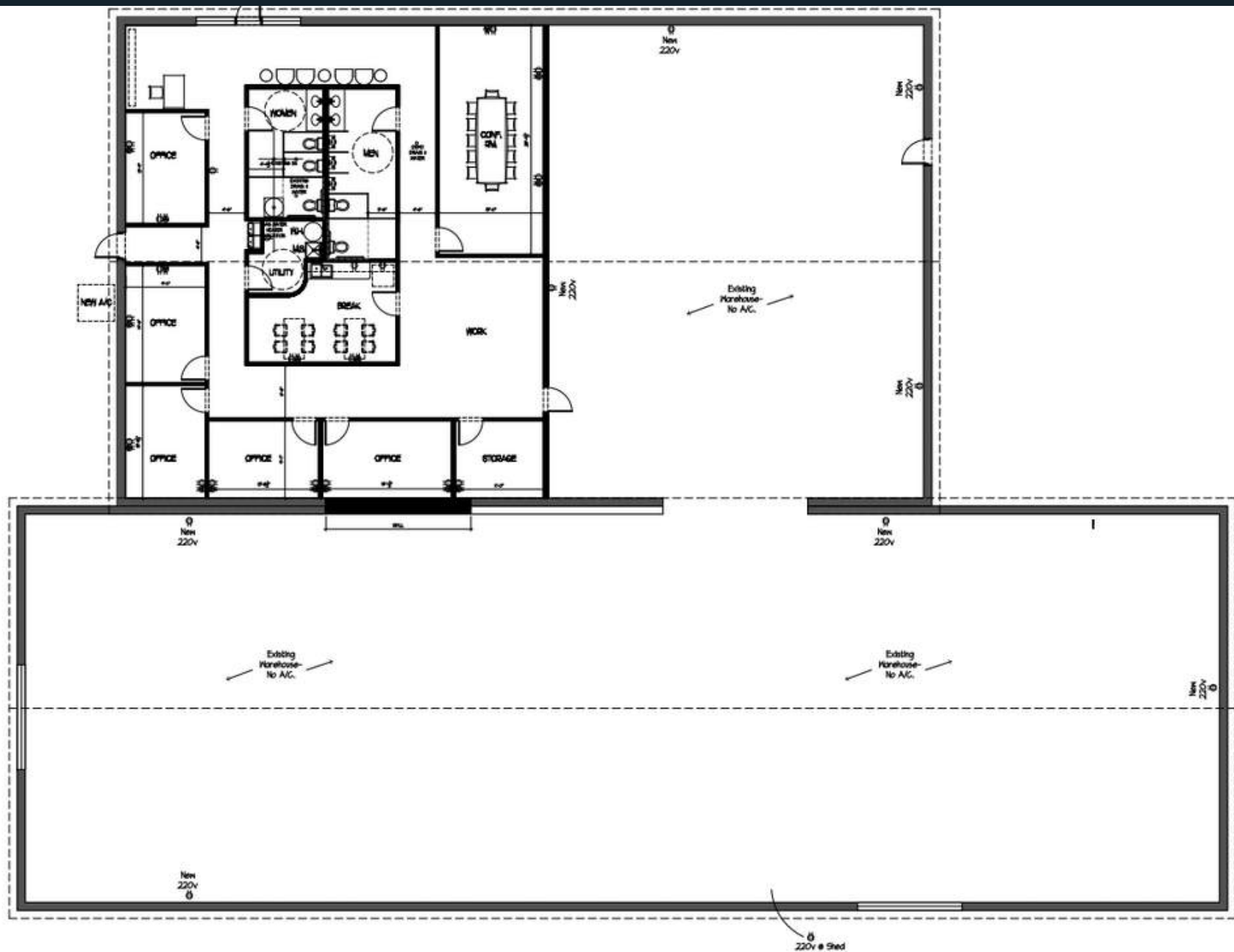


**SC - Suburban Corridor**



# FLOOR PLAN

3910 E MCKINNEY ST  
DENTON | TX 76208





# PROPERTY PICTURES

3910 E MCKINNEY ST

DENTON | TX 76208





# LOCATION OVERVIEW

3910 E MCKINNEY ST

DENTON | TX 76208



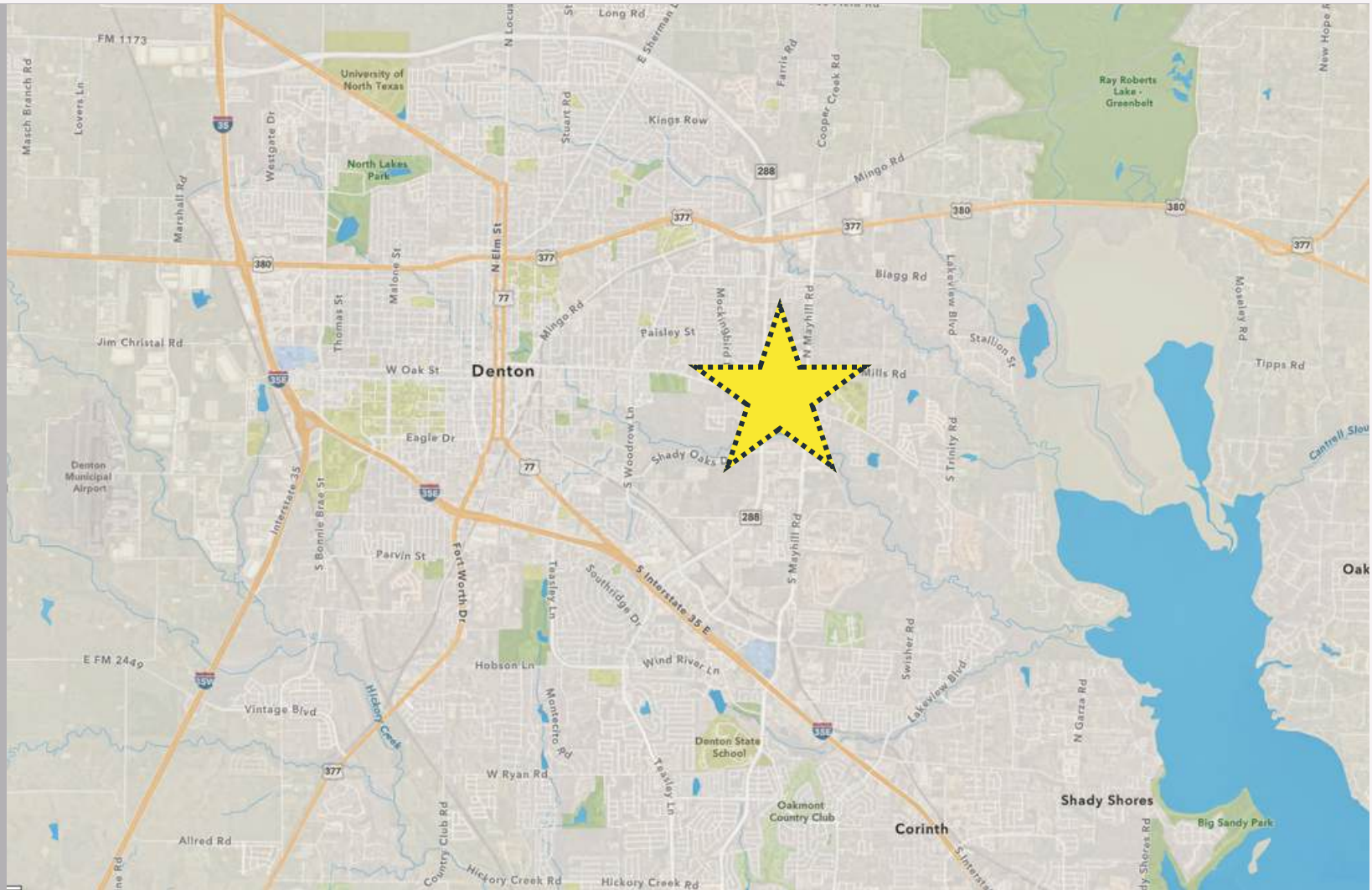
**11 Miles**  
Denton Airport



**3 Miles**  
Downtown  
Denton



**27 Miles**  
DFW Airport



*Situated near the intersection at E McKinney St and Mayhill Rd., the Property, benefits from its proximity to major interstates, such as 35E, downtown Denton, and residential rooftops, and growing population of ~ 160,000.*



The information contained herein was obtained from sources believed reliable; however, Bradford Companies makes no guarantees, warranties, or representation as to the completeness or accuracy thereof.



**3910 E MCKINNEY STREET**

DENTON, TEXAS 76208

**CHRIS WONG**

214.499.8741

cwong@bradford.com

**ANDREW CLARK**

972.834.9682

aclark@bradford.com

**LOGAN WEATHERFORD**

214.709.2208

lweatherford@bradford.com