



# SAN FRANCISCO EXECUTIVE PARK

150 EXECUTIVE PARK

250 EXECUTIVE PARK

**TCP**  
**TOUCHSTONE**  
COMMERCIAL PARTNERS  
[WWW.TCPRE.COM](http://WWW.TCPRE.COM)

**ZACH HAUPERT** [zhaupert@tcpre.com](mailto:zhaupert@tcpre.com)  
D 415.539.1121 | C 415.812.1219

**MICHAEL SANBERG** [msanberg@tcpre.com](mailto:msanberg@tcpre.com)  
D 415.539.1103 | C 415.697.6088

**TREVOR GUDIM** [trevor@tcpre.com](mailto:trevor@tcpre.com)  
D 415.539.1122 | C 858.922.2632



# SAN FRANCISCO EXECUTIVE PARK

## PROPERTY SUMMARY

### ADDRESS

150 - 250 Executive Park Boulevard  
San Francisco, CA 94134

### AVAILABLE SPACE

#### 250 EXECUTIVE PARK:

- Suite 4200: +/- 11,021 Square Feet
- Suite 4100: +/- 2,092 Square Feet
- Suite 4050: +/- 6,890 Square Feet
- Suite 4000: +/- 6,065 Square Feet
- Suite 3400: +/- 27,527 Square Feet
- Suite 3125: +/- 3,127 Square Feet
- Suite 2000: +/- 11,742 Square Feet
- Suite 1000: +/- 5,200 Square Feet

#### 150 EXECUTIVE PARK:

- Suite 4525: +/- 643 Square Feet
- Suite 4250: +/- 1,049 Square Feet
- Suite 4100: +/- 5,242 Square Feet
- Suite 4000: +/- 4,857 Square Feet
- Suite 3752: +/- 1,184 Square Feet
- Suite 3751: +/- 1,838 Square Feet
- Suite 3210: +/- 1,132 Square Feet
- Suite 2600: +/- 1,171 Square Feet
- Suite 2180: +/- 2,608 Square Feet

### RENTAL RATE

\$30 / Square Foot / Year, Industrial Gross



250 EXECUTIVE PARK (SUITE 4000)



150 EXECUTIVE PARK (SUITE 3000)

[CLICK TO VIEW FLOOR PLANS](#)



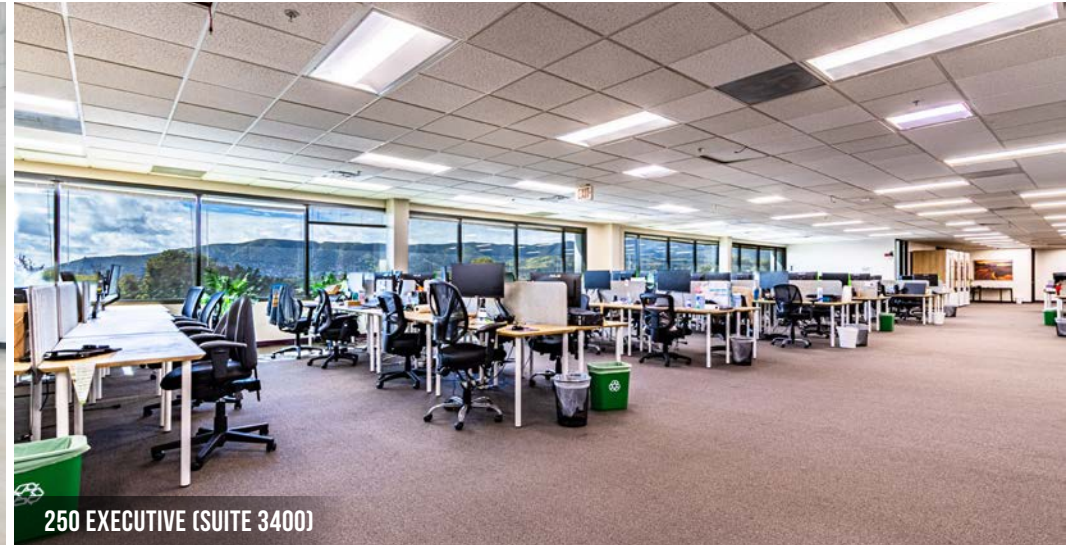
# SAN FRANCISCO EXECUTIVE PARK

## 150 - 250 EXECUTIVE PARK BOULEVARD

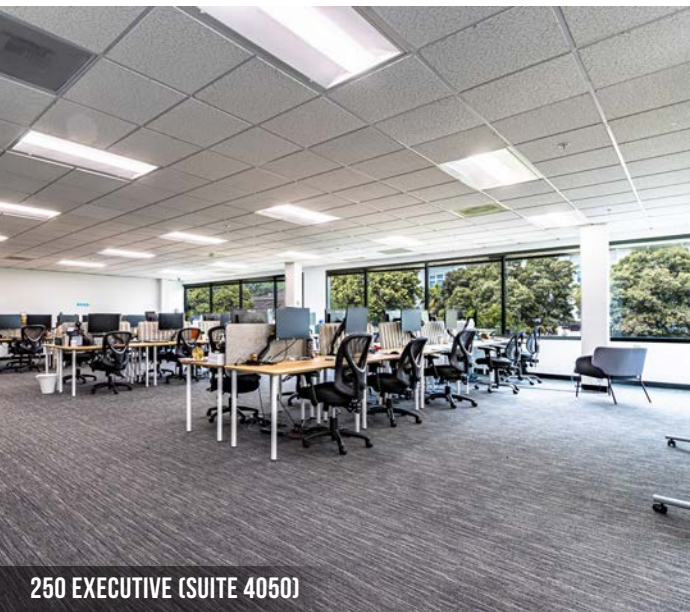
### SAN FRANCISCO, CA



250 EXECUTIVE (SUITE 4000)



250 EXECUTIVE (SUITE 3400)



250 EXECUTIVE (SUITE 4050)



250 EXECUTIVE (SUITE 4000)



250 EXECUTIVE (SUITE 4300)

**ZACH HAUPERT** zhaupert@tcpre.com  
D 415.539.1121 | C 415.812.1219

**MICHAEL SANBERG** msanberg@tcpre.com  
D 415.539.1103 | C 415.697.6088

**TREVOR GUDIM** trevor@tcpre.com  
D 415.539.1122 | C 858.922.2632



# SAN FRANCISCO EXECUTIVE PARK

## 150 - 250 EXECUTIVE PARK BOULEVARD

### SAN FRANCISCO, CA



150 EXECUTIVE (SUITE 3000)



150 EXECUTIVE (LOBBY)



150 EXECUTIVE (SUITE 3790)



150 EXECUTIVE (SUITE 4525)



150 EXECUTIVE (SUITE 3000)

**ZACH HAUPERT** zhaupert@tcpre.com  
D 415.539.1121 | C 415.812.1219

**MICHAEL SANBERG** msanberg@tcpre.com  
D 415.539.1103 | C 415.697.6088

**TREVOR GUDIM** trevor@tcpre.com  
D 415.539.1122 | C 858.922.2632



**SAN FRANCISCO  
EXECUTIVE PARK**

**150 - 250 EXECUTIVE PARK BOULEVARD**

**SAN FRANCISCO, CA**

**San Francisco's Premier Waterfront Office Campus**



**FREE PARKING**



**NEIGHBORING  
PARK WITH TRAILS**



**FREE BART &  
CALTRAIN SHUTTLE**



**WALK TO  
CALTRAIN**



**MINUTES TO  
AIRPORT**



**ON-SITE CAFE**



**BEST VALUE FOR  
TURNKEY SPACE**



**FREE CONFERENCE  
ROOM**



**5 MINUTES TO DOWNTOWN  
SAN FRANCISCO**



**BAY VIEWS**

**ZACH HAUPERT** zhaupert@tcpre.com  
D 415.539.1121 | C 415.812.1219

**MICHAEL SANBERG** msanberg@tcpre.com  
D 415.539.1103 | C 415.697.6088

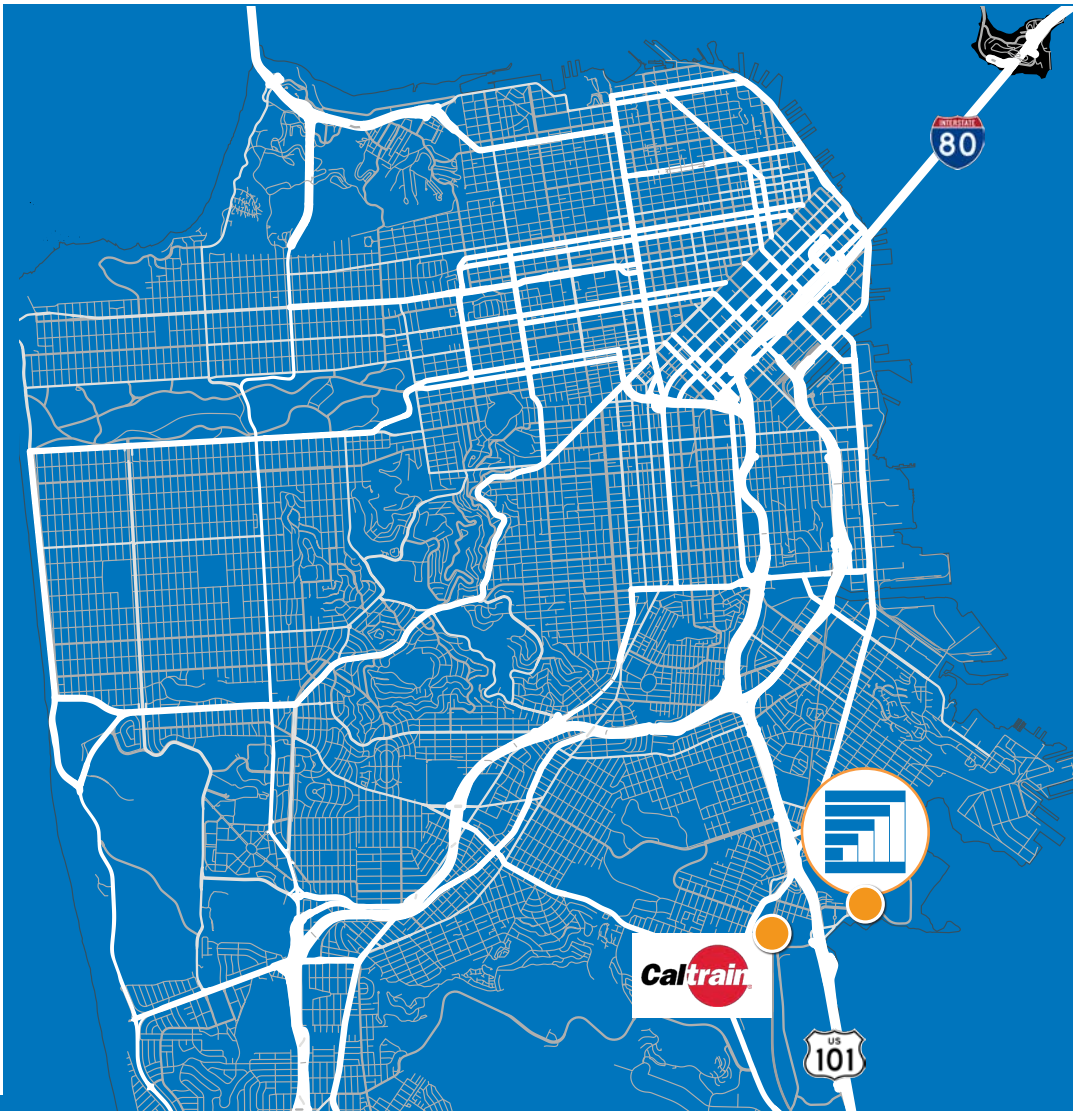
**TREVOR GUDIM** trevor@tcpre.com  
D 415.539.1122 | C 858.922.2632



# SAN FRANCISCO EXECUTIVE PARK

150 - 250 EXECUTIVE PARK BOULEVARD

SAN FRANCISCO, CA



## A Commuter's Paradise



**FREE**  
ON-SITE  
PARKING



**13 MIN**  
WALK TO BAYSHORE  
CALTRAIN STATION



**FREE**  
BART & CALTRAIN  
SHUTTLE

**ZACH HAUPERT** zhaupert@tcpre.com  
D 415.539.1121 | C 415.812.1219

**MICHAEL SANBERG** msanberg@tcpre.com  
D 415.539.1103 | C 415.697.6088

**TREVOR GUDIM** trevor@tcpre.com  
D 415.539.1122 | C 858.922.2632



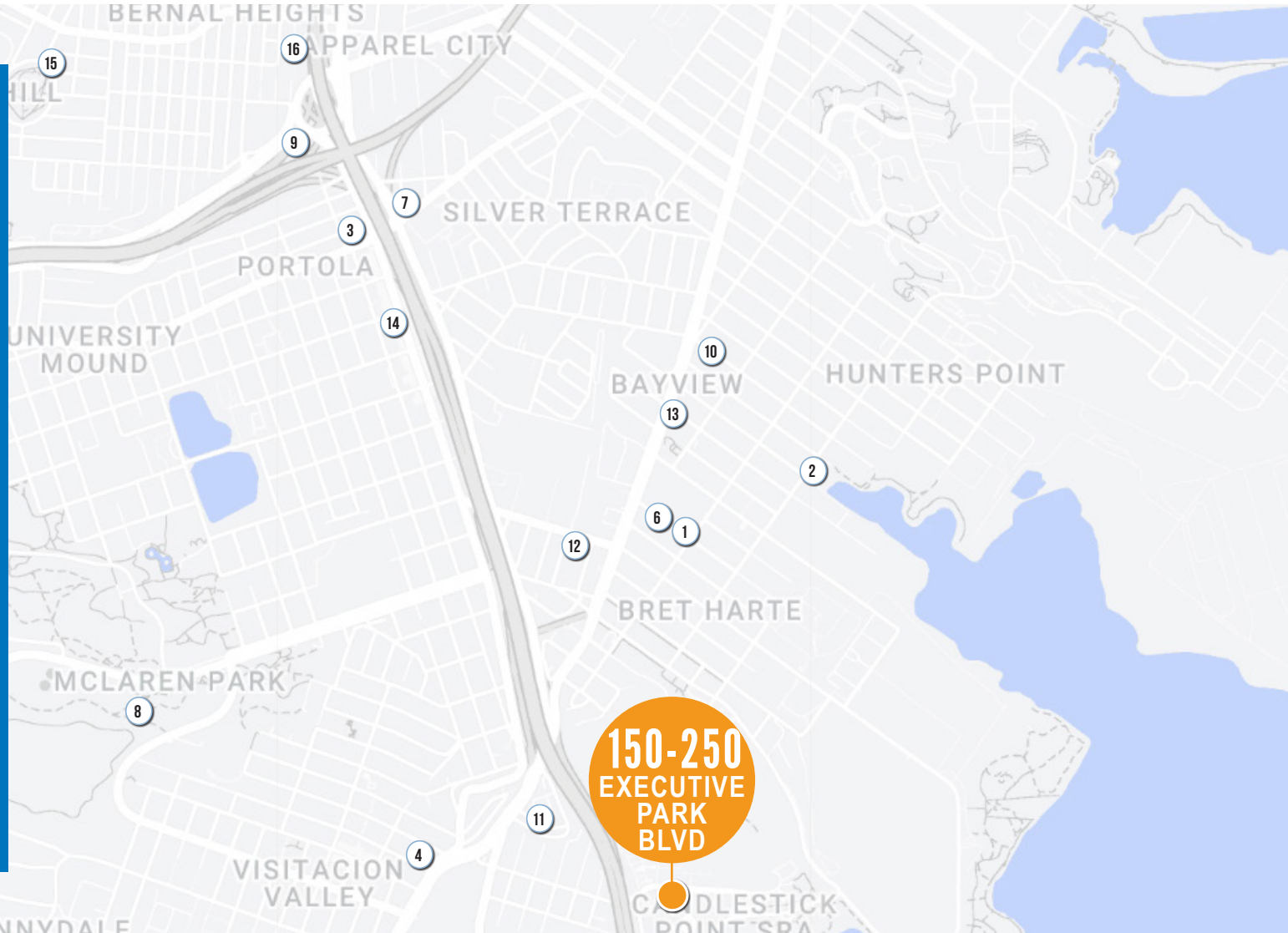
# SAN FRANCISCO EXECUTIVE PARK

## 150 - 250 EXECUTIVE PARK BOULEVARD

### SAN FRANCISCO, CA

### NEARBY AMENITIES

- 1..... Marthita's
- 2..... City Lunch Restaurant
- 3..... Ling Ling Cuisine
- 4..... San Marcos
- 5..... Cow Palace Arena
- 6..... Laughing Monk Brewery
- 7..... Shell
- 8..... McLaren Park
- 9..... Alameny Farmer's Market
- 10..... McDonald's
- 11..... Bayside Cafe
- 12..... B&J Burgers
- 13..... Craftsmen and Wolves Den
- 14..... Breakfast at Tiffany's
- 15..... Pinhole Coffee
- 16..... Barebottle Brewing Company



**ZACH HAUPERT** zhaupert@tcpere.com  
D 415.539.1121 | C 415.812.1219

**MICHAEL SANBERG** msanberg@tcpere.com  
D 415.539.1103 | C 415.697.6088

**TREVOR GUDIM** trevor@tcpere.com  
D 415.539.1122 | C 858.922.2632



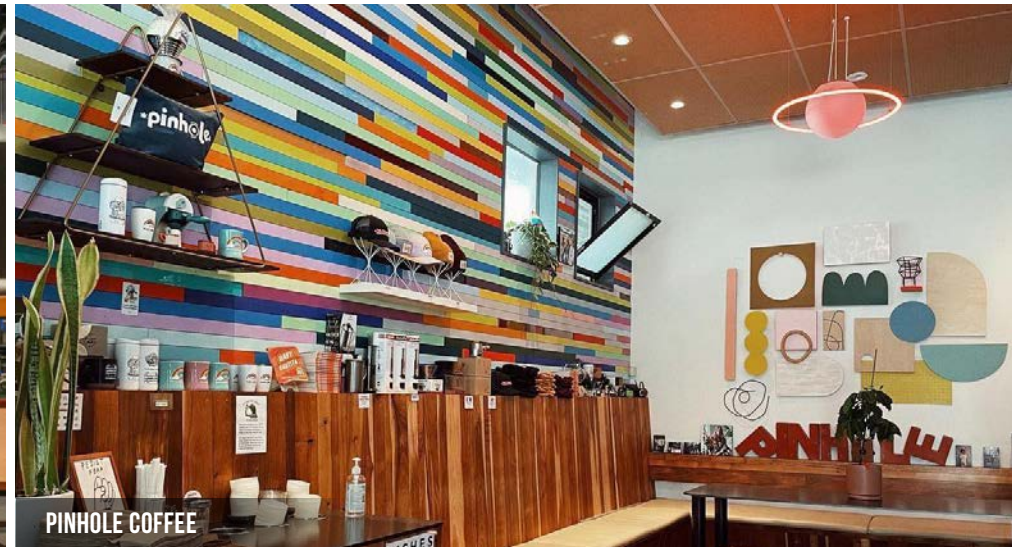
# SAN FRANCISCO EXECUTIVE PARK

150 - 250 EXECUTIVE PARK BOULEVARD

SAN FRANCISCO, CA



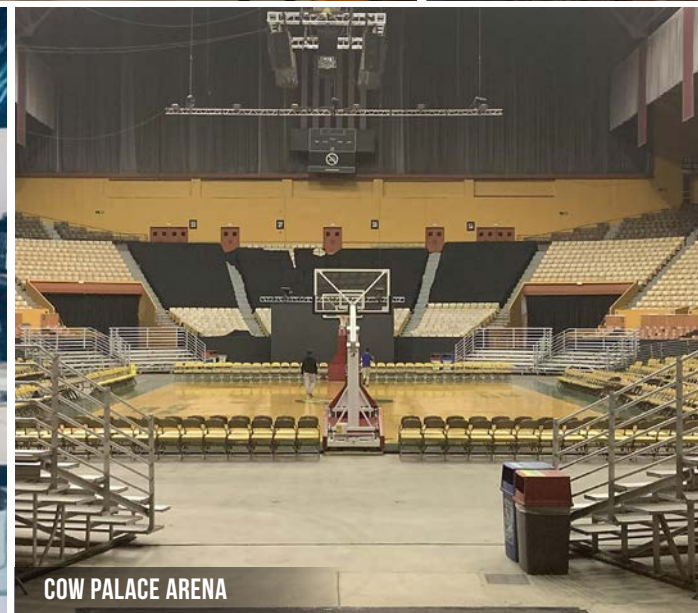
BAREBOTTLE BREWING



PINHOLE COFFEE



CRAFTSMEN & WOLVES DEN



COW PALACE ARENA



MCLAREN PARK

**ZACH HAUPERT** zhaupert@tcpre.com  
D 415.539.1121 | C 415.812.1219

**MICHAEL SANBERG** msanberg@tcpre.com  
D 415.539.1103 | C 415.697.6088

**TREVOR GUDIM** trevor@tcpre.com  
D 415.539.1122 | C 858.922.2632





# SAN FRANCISCO EXECUTIVE PARK

**TCP**  
**TOUCHSTONE**  
COMMERCIAL PARTNERS

Corp. Lic. 01112906  
www.tcpre.com

**ZACH HAUPERT**

D 415.539.1121 C 415.812.1219  
zhaupert@tcpre.com DRE # 01822907

**MICHAEL SANBERG**

D 415.539.1103 C 415.697.6088  
msanberg@tcpre.com DRE # 01930041

**TREVOR GUDIM**

D 415.539.1122 C 858.922.2632  
trevor@tcpre.com DRE # 01979980

This document has been prepared by Touchstone Commercial Partners for advertising and general information only. Touchstone Commercial Partners makes no guarantees, representations or warranties of any kind, expressed or implied, regarding the information including, but not limited to, warranties of content, accuracy and reliability. Any interested party should undertake their own inquiries as to the accuracy of the information. Touchstone Commercial Partners excludes unequivocally all inferred or implied terms, conditions and warranties arising out of this document and excludes all liability for loss and damages arising there from. This publication is the copyrighted property of Touchstone Commercial Partners and/or its licensor(s). ©2024. All rights reserved.