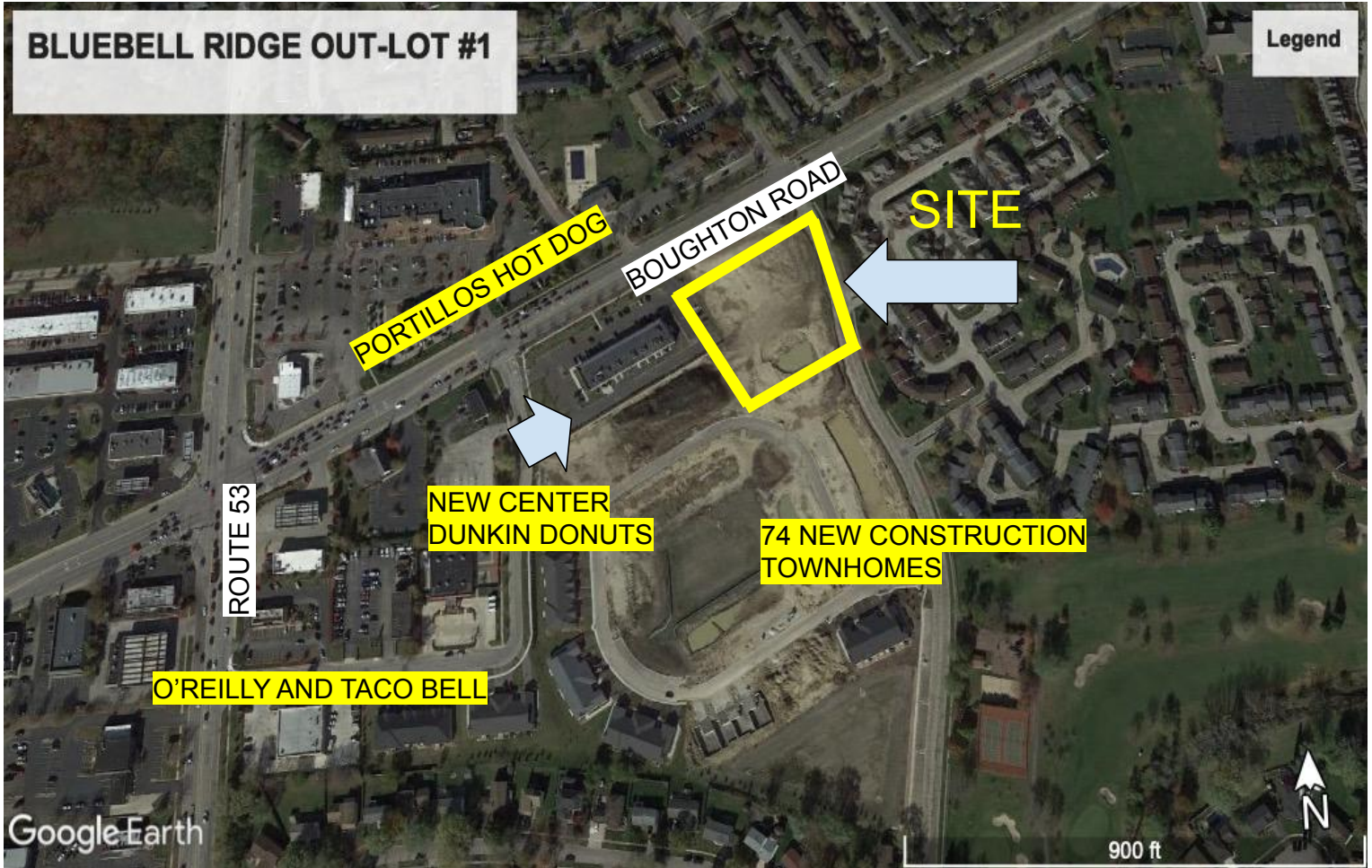


# SWC BOUGHTON RD. & FALCONRIDGE WAY BOLINGBROOK IL 60440



**PRIME COMMERCIAL LAND (2.018 ACRES) LOCATED ON THE SOUTHWEST CORNER OF BOUGHTON RD. AND FALCONRIDGE WAY. LIGHTED INTERSECTION WITH DAILY TRAFFIC COUNTS OF 31,500 VEHICLES PER DAY (IDOT). THIS SITE IS PART OF A MIXED USE DEVELOPMENT WITH (79) RESIDENTIAL TOWNHOMES AND (2) COMMERCIAL OUT-LOTS.**

CONTACT TIM OLSICK

OLSICK REALTY, INC

CELL: (630) 947-6854

LOCKPORT, IL

EMAIL: [TIMOLSICK@GMAIL.COM](mailto:TIMOLSICK@GMAIL.COM)