

+/- 3,104 SF MEDICAL/OFFICE FOR LEASE



1412 SE 14TH ST

Bentonville, AR 72712



VIDEO

PROPERTY DESCRIPTION

Seize this unparalleled opportunity to position your business at the gateway to the 350-acre Walmart World Headquarters in one of the fastest growing markets in the country. This high exposure property sits directly across from the main south entrance fronting a 6-lane highway with over 34,000 VPD ideal for capitalizing on the influx of professionals, visitors, and corporate executives. The +/- 3,104 SF commercial building that sits on +/- 0.46 acres is a rare and unmatched chance to secure a high-profile property in this booming business district. Perfect for investors or owner operators looking to leverage this prime location and Bentonville's explosive growth.

OFFERING SUMMARY

Lease Rate:	\$36.00 SF/yr (Absolute Net)
Available SF:	3,104 SF
Lot Size:	0.46 Acres
Building Size:	3,104 SF

DEMOGRAPHICS	0.25 MILES	0.5 MILES	1 MILE
Total Households	201	754	2,770
Total Population	450	1,708	5,773
Average HH Income	\$74,876	\$70,506	\$66,285

We obtained the information above from sources we believe to be reliable. However, we have not verified its accuracy and make no guarantee, warranty or representation about it. It is submitted subject to the possibility of errors, omissions, change of price, rental or other conditions, prior sale, lease or financing, or withdrawal without notice. We include projections, opinions, assumptions or estimates for example only, and they may not represent current or future performance of the property. You and your tax and legal advisors should conduct your own investigation of the property and transaction.

SALMONSEN GROUP

Executive Broker
O: 479.231.1355
C: 479.330.1250
sgrleadmanager@gmail.com
AR #EB00066512

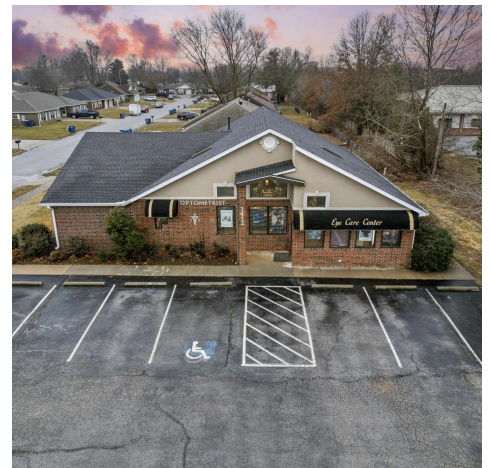
KW COMMERCIAL
201 SW 14th St.
Suite 203
Bentonville, AR 72712

Each Office Independently Owned and Operated salmonsengroup.com

+/- 3,104 SF MEDICAL/OFFICE FOR LEASE

1412 SE 14TH ST

Bentonville, AR 72712



We obtained the information above from sources we believe to be reliable. However, we have not verified its accuracy and make no guarantee, warranty or representation about it. It is submitted subject to the possibility of errors, omissions, change of price, rental or other conditions, prior sale, lease or financing, or withdrawal without notice. We include projections, opinions, assumptions or estimates for example only, and they may not represent current or future performance of the property. You and your tax and legal advisors should conduct your own investigation of the property and transaction.

SALMONSEN GROUP
Executive Broker
O: 479.231.1355
C: 479.330.1250
sgrleadmanager@gmail.com
AR #EB00066512

KW COMMERCIAL
201 SW 14th St.
Suite 203
Bentonville, AR 72712

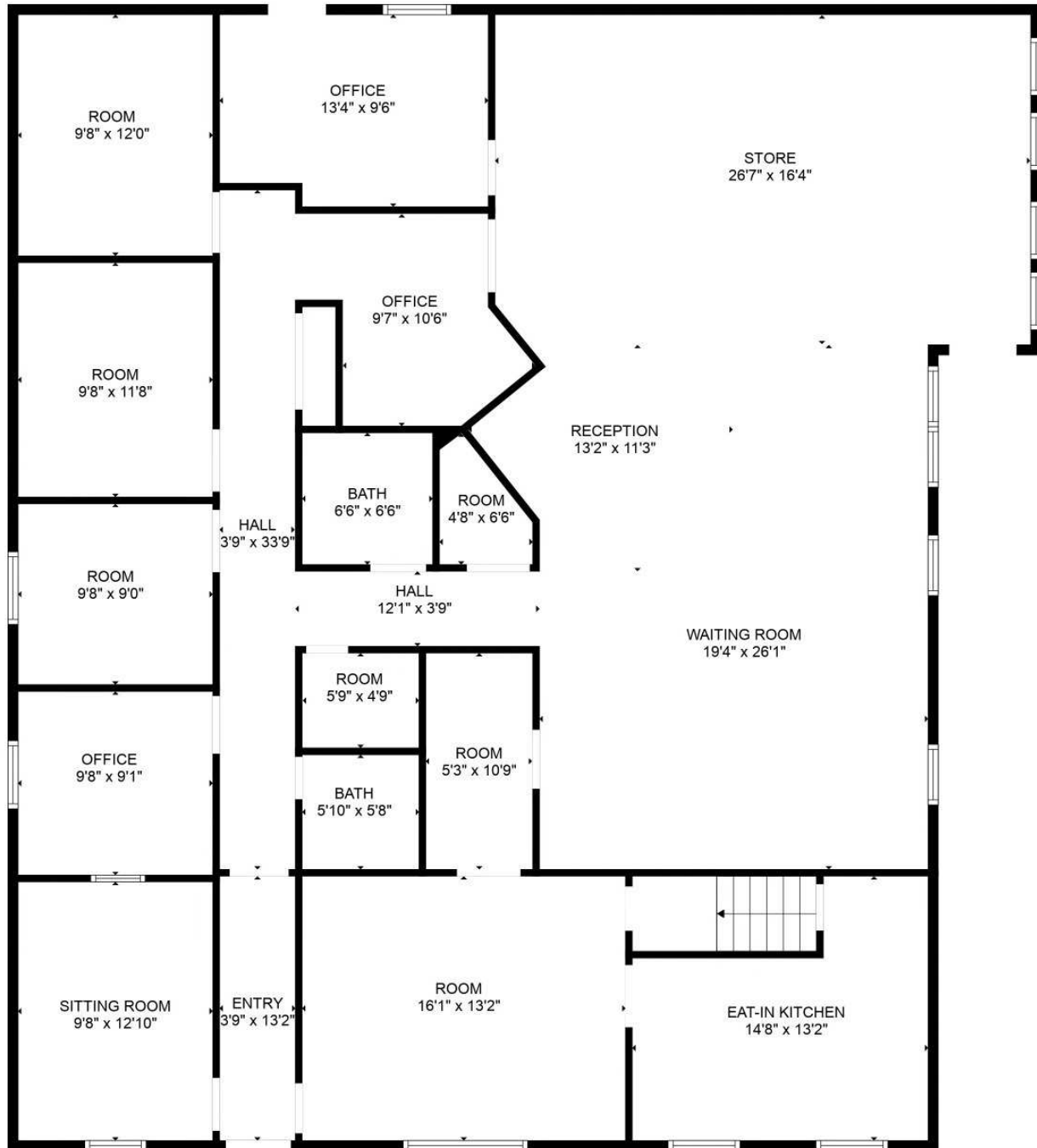
Each Office Independently Owned and Operated salmonsengroup.com

+/- 3,104 SF MEDICAL/OFFICE FOR LEASE



1412 SE 14TH ST

Bentonville, AR 72712



We obtained the information above from sources we believe to be reliable. However, we have not verified its accuracy and make no guarantee, warranty or representation about it. It is submitted subject to the possibility of errors, omissions, change of price, rental or other conditions, prior sale, lease or financing, or withdrawal without notice. We include projections, opinions, assumptions or estimates for example only, and they may not represent current or future performance of the property. You and your tax and legal advisors should conduct your own investigation of the property and transaction.

SALMONSEN GROUP
Executive Broker
O: 479.231.1355
C: 479.330.1250
sgrleadmanager@gmail.com
AR #EB00066512

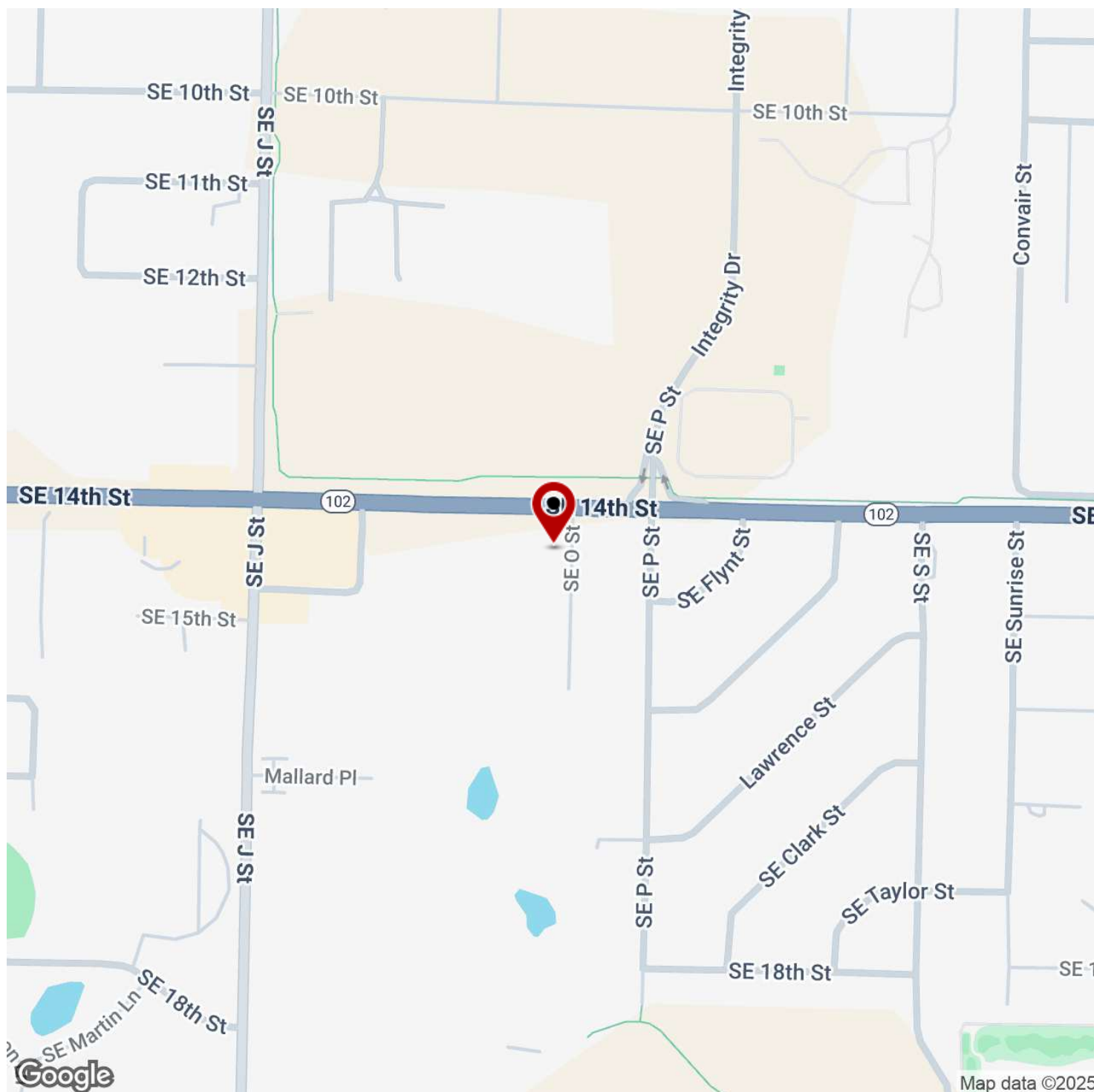
KW COMMERCIAL
201 SW 14th St.
Suite 203
Bentonville, AR 72712

Each Office Independently Owned and Operated salmonsengroup.com

1412 SE 14TH ST



KW
COMMERCIAL



SALMONSEN GROUP
Executive Broker
O: 479.231.1355
C: 479.330.1250
sgrleadmanager@gmail.com
AR #EB00066512

KW COMMERCIAL
201 SW 14th St.
Suite 203
Bentonville, AR 72712

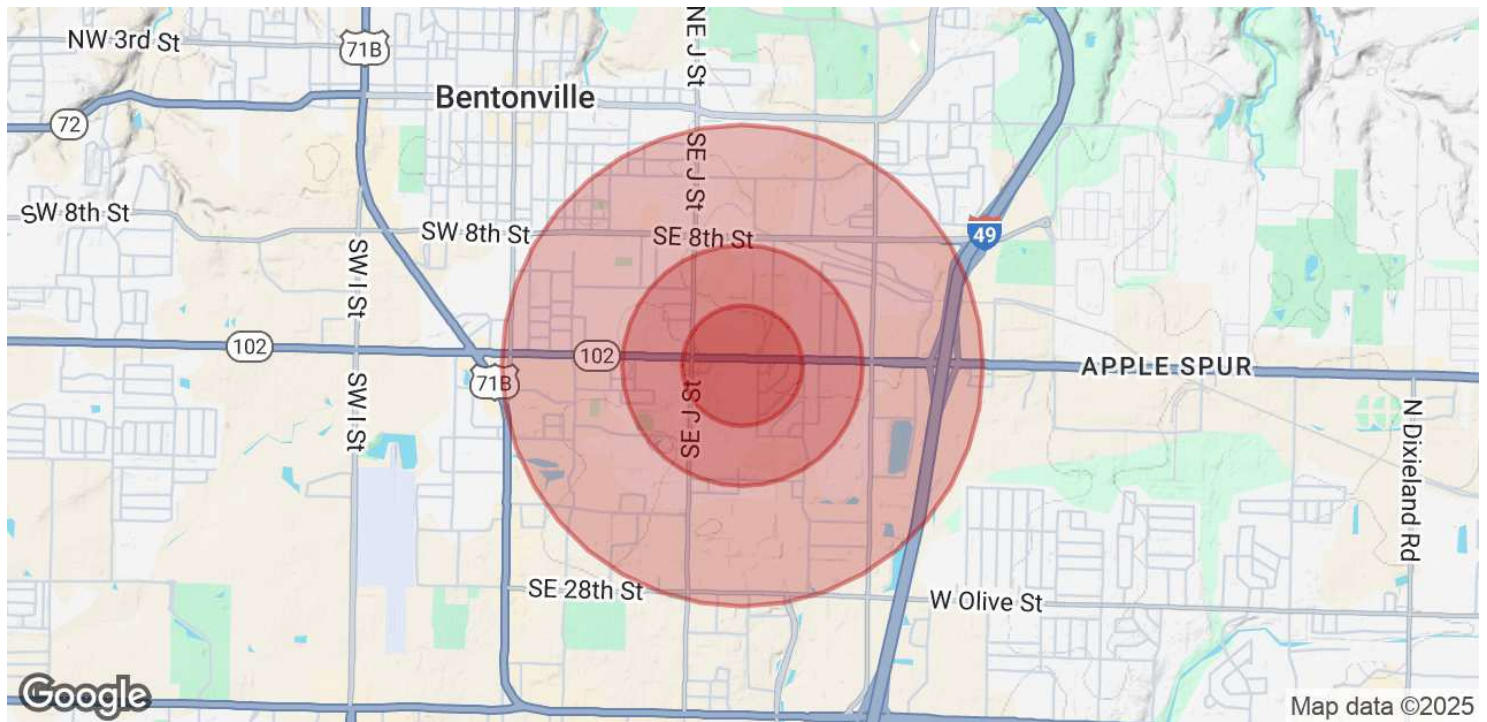
Each Office Independently Owned and Operated salmonsengroup.com

+/- 3,104 SF MEDICAL/OFFICE FOR LEASE



1412 SE 14TH ST

Bentonville, AR 72712



POPULATION	0.25 MILES	0.5 MILES	1 MILE
Total Population	450	1,708	5,773
Average Age	32.6	31.6	31.6
Average Age (Male)	32.6	31.5	30.8
Average Age (Female)	32.7	31.8	33.6

HOUSEHOLDS & INCOME	0.25 MILES	0.5 MILES	1 MILE
Total Households	201	754	2,770
# of Persons per HH	2.2	2.3	2.1
Average HH Income	\$74,876	\$70,506	\$66,285
Average House Value	\$179,541	\$181,529	\$182,353

2020 American Community Survey (ACS)

We obtained the information above from sources we believe to be reliable. However, we have not verified its accuracy and make no guarantee, warranty or representation about it. It is submitted subject to the possibility of errors, omissions, change of price, rental or other conditions, prior sale, lease or financing, or withdrawal without notice. We include projections, opinions, assumptions or estimates for example only, and they may not represent current or future performance of the property. You and your tax and legal advisors should conduct your own investigation of the property and transaction.

SALMONSEN GROUP
Executive Broker
O: 479.231.1355
C: 479.330.1250
sgrleadmanager@gmail.com
AR #EB00066512

KW COMMERCIAL
201 SW 14th St.
Suite 203
Bentonville, AR 72712

Each Office Independently Owned and Operated salmonsengroup.com