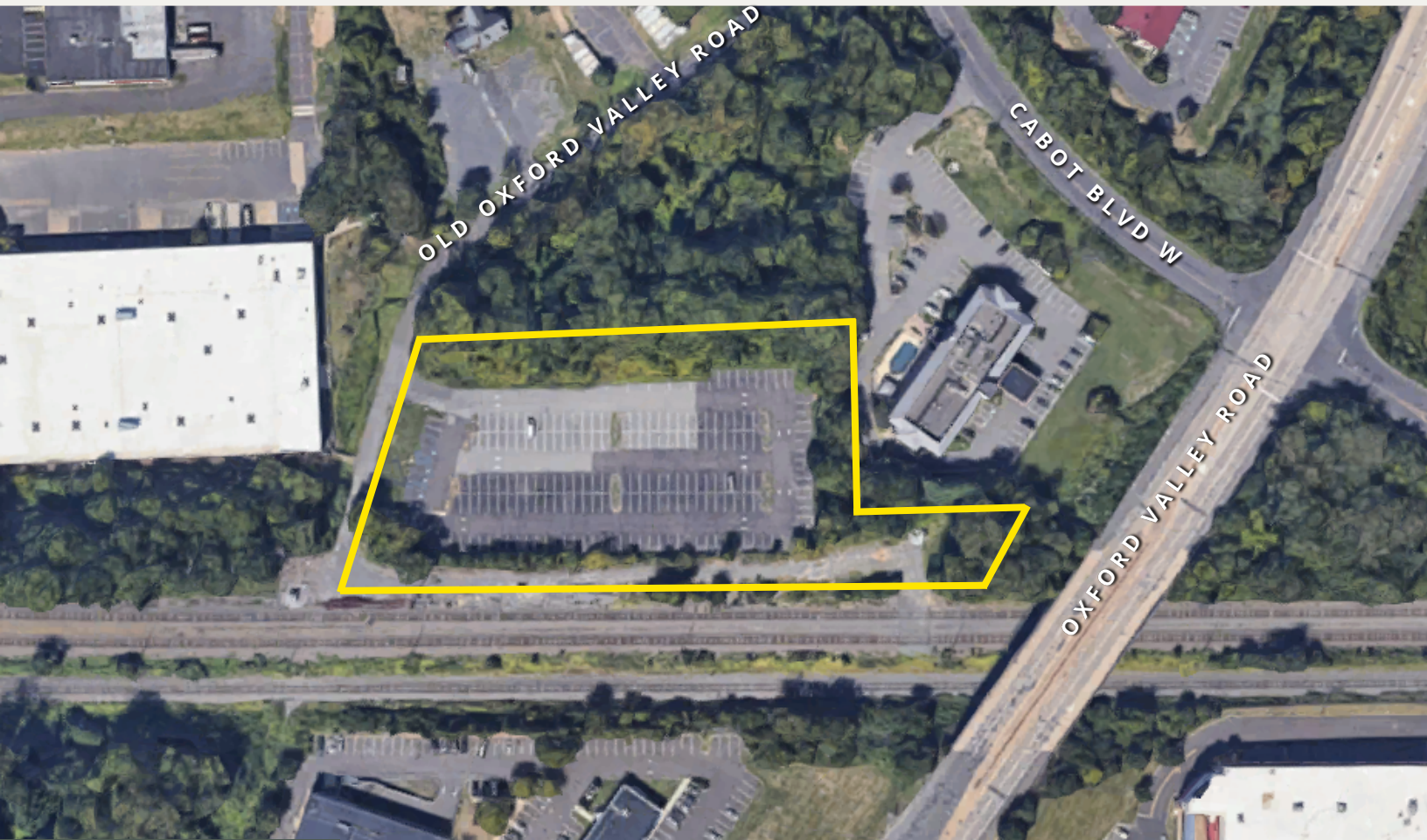


IOS LOT AVAILABLE

BUCKS COUNTY BUSINESS PARK
LANGHORNE, PA



PROPERTY HIGHLIGHTS

MICHAEL BORSKI, SR.
MBORSKI@FLYNNCO.COM
215-561-6565 X 120

PATRICK GILMORE, SIOR
PGILMORE@FLYNNCO.COM
215-561-6565 X 122



Parcel #: 13-003-009-001



Lot Size: 3.17 Acres
Approximately 2+ Acres Paved/Lit



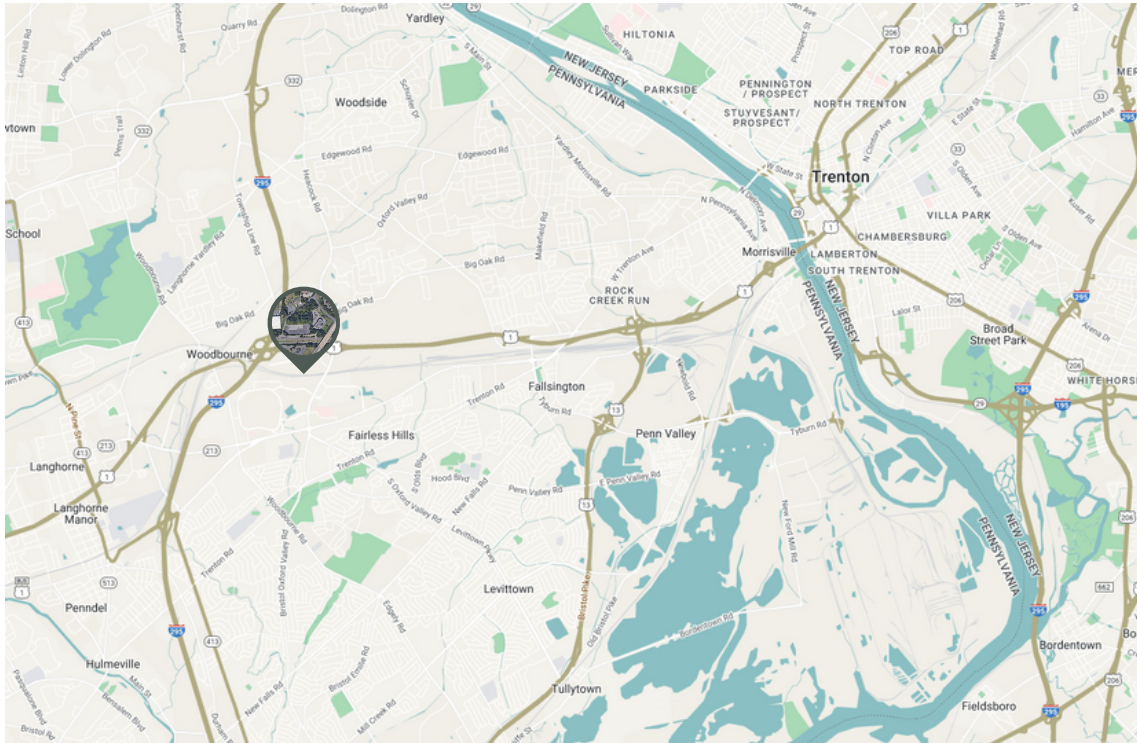
Location: Just off Intersection of I-295 & Oxford Valley Road,
Within minutes of Route 2 and 10 minutes of PA Turnpike

The
Flynn
Company

THE FLYNN COMPANY

WWW.FLYNNCO.COM | 1621 WOOD STREET, PHILADELPHIA, PA 19103 | 215.561.6565

LOCATION



ACCESSIBILITY

Trenton- Morrisville Bridge	7.6 miles
Route 1	0.8 miles
I-295	1.6 miles
Route 13	4.9 miles
New York	73.0 miles
Center City Philadelphia	27.6 miles

**FOR MORE INFORMATION
PLEASE CONTACT
THE FLYNN COMPANY**

MICHAEL BORSKI, SR.
MBORSKI@FLYNNCO.COM
215-561-6565 X 120

PATRICK GILMORE, SIOR
PGILMORE@FLYNNCO.COM
215-561-6565 X 122