

RETAIL/RESTAURANT/MEDICAL

BRUCKNER COMMONS

Located at 1910 Story Avenue, on the southeast corner of White Plains Road

SOUNDVIEW

BRONX | NY

Up to
1,675 SF
Ground Floor

3,164 SF
Second Floor
For Lease



ARTIST'S RENDERING

RIPCO
REAL ESTATE

SPACE DETAILS

LOCATION

Southeast corner of White Plains Road

SIZE

Ground Floor

Space 15 1,675 SF

Second Floor

Space 204 3,164 SF

POSSESSION

Immediate

RENT

Upon Request

NEIGHBORS

Marshalls, Old Navy, Gap, Jimmy Jazz, Five Below, ALDI (coming soon), and Lot-Less (coming soon)

CO-TENANTS

Target (coming soon), ShopRite, Burlington, Smashburger, City Jeans, Boston Market, T-Mobile, AT&T, Dime Bank, MadRag, Snipes, Urban Eyes, Crab Du Jour (coming soon), Phenix Salons (coming soon), CityMD (coming soon), Avalon Nails, JAGOne (coming soon), and SalonCentric (coming soon)

COMMENTS

First ShopRite in the Bronx

110,000 VPD via Bruckner Expressway and Bruckner Boulevard

25,000 VPD via White Plains Road

1,091 free parking spaces

Target opening a 140,000 SF store in 2025

TRANSPORTATION

2021 Ridership Report

Bx36



Annual 3,831,479

Weekday 12,044

Weekend 14,054

Bx5



Annual 1,504,881

Weekday 4,661

Weekend 5,867

Bx39

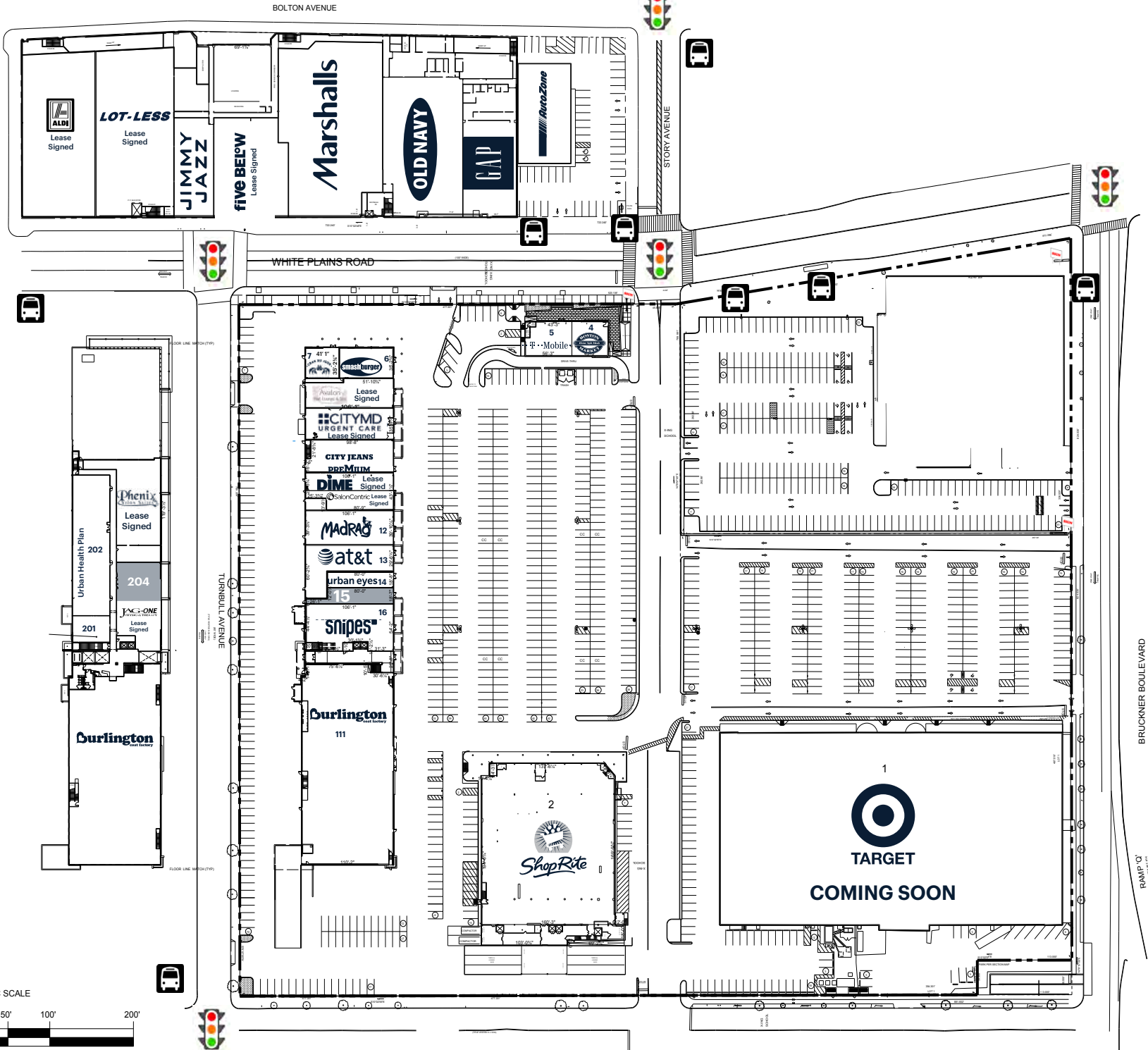
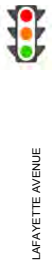


Annual 2,535,430

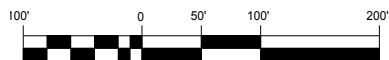
Weekday 7,787

Weekend 10,195

SITE PLAN



GRAPHIC SCALE



BRUCKNER BOULEVARD

RAMP 'Q'

ALDI
Lease Signed

LOT-LESS
Lease Signed

JIMMY JAZZ

FIVE BELOW
Lease Signed

Marshall's

OLD NAVY

GAP

AutoZone

Urban Health Plan 202

Phenix
Lease Signed

204

JAC-O-ONE
Lease Signed

201

Durlington

Smart Burger

Awalon
Lease Signed

CITYMD URGENT CARE
Lease Signed

CITY JEANS

PREMIUM

DIME
Lease Signed

Madrag

at&t

urban eyes14

15

snipes™

16

Burlington
111

2

ShopRite

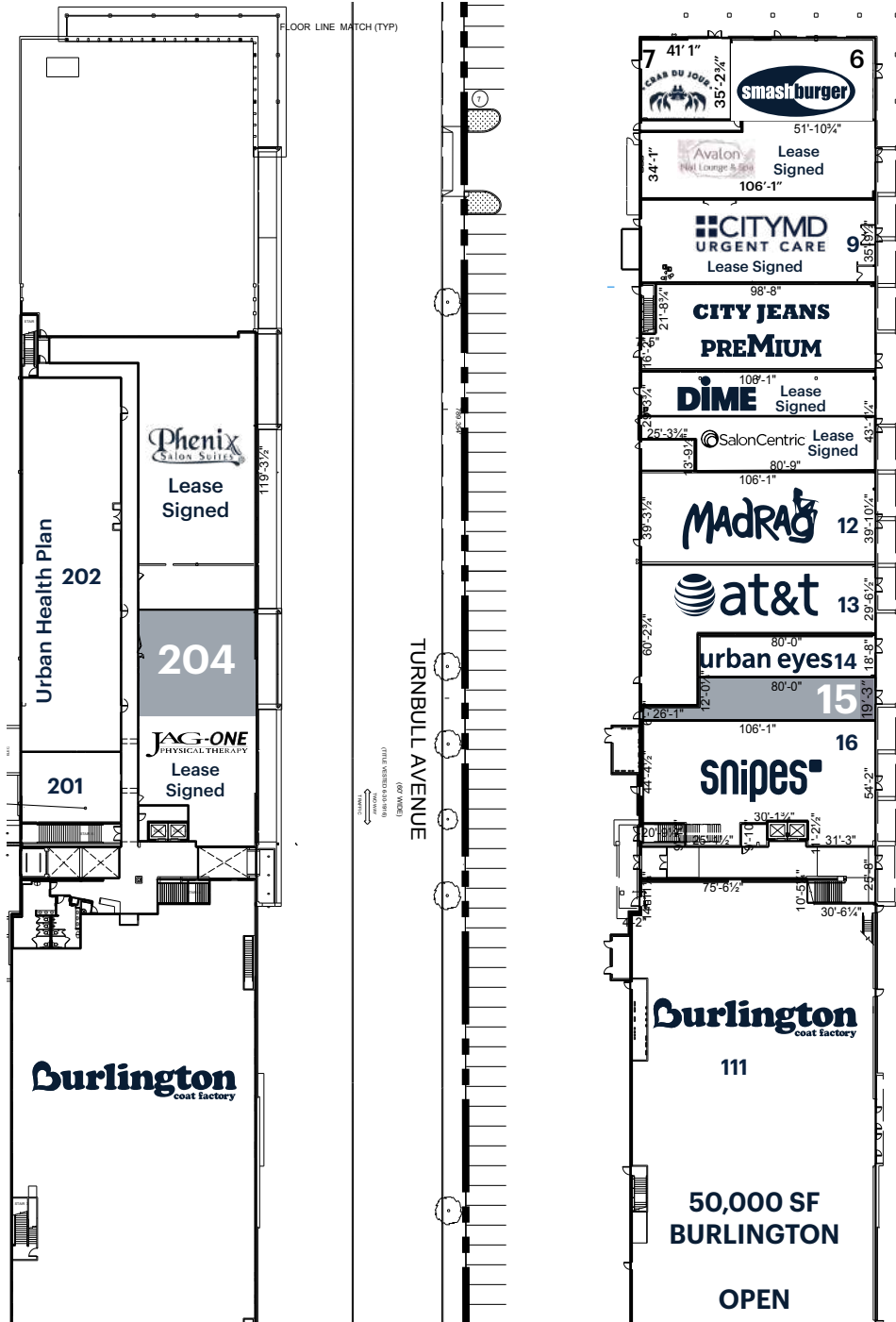
1



TARGET

COMING SOON

LEASING PLAN



AVAILABLE SPACES	
SPACE	SF
15	1,675
LEVEL 2	
204	3,164

AREA RETAIL



CONTACT EXCLUSIVE AGENTS

CHRIS WALTHER

cwalther@ripcony.com
718.233.6565

BEN WEINER

bweiner@ripcony.com
718.233.6565

MILES MAHONY

mmahony@ripcony.com
718.233.6565

RIPCO
REAL ESTATE

32 Court Street
10th Floor
Brooklyn, NY 11201
718.233.6565

Please visit us at ripcony.com for more information

This information has been secured from sources we believe to be reliable, but we make no representations as to the accuracy of the information. References to square footage are approximate. Buyer must verify the information and bears all risk for any inaccuracies.