



M E R I D I A N

147 S. CHERRY STREET, SUITE 200 | WINSTON-SALEM, NC 27101 | P 336.722.1986 | F 336.723.3173 | MERIDIANREALTY.COM

Office | Retail Complex

8030 North Point Boulevard

Winston-Salem, NC 27106



Office/retail complex is on approximately 1.34± acres at the corner of North Point Boulevard and Providence Lane. Attractive brick and stucco building. Excellent ingress/egress and large parking lot. 1,196± sf available.

For more information:

Jesse H. Jarrell, CCIM

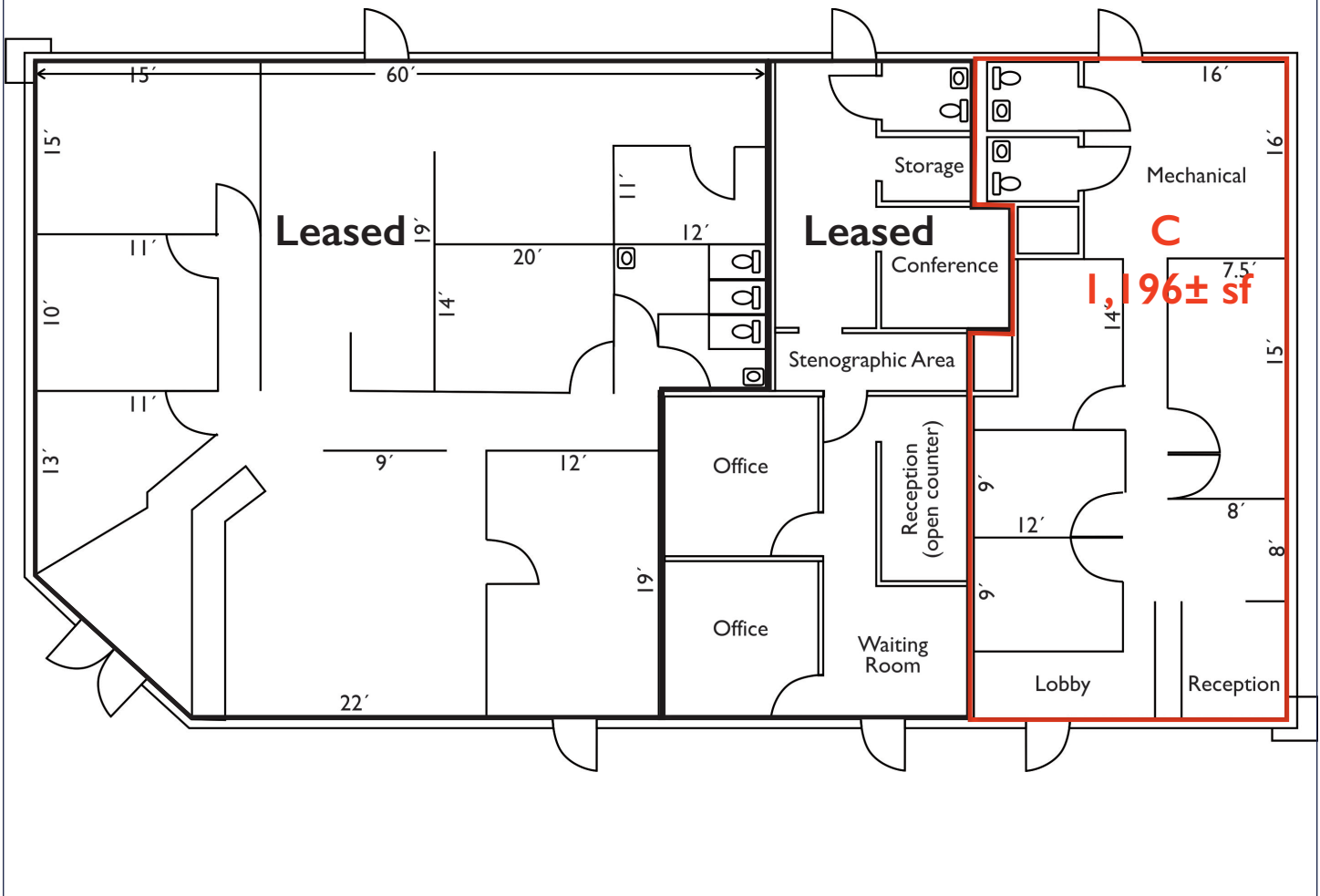
jjarrell@meridianrealty.com

336.480.2324

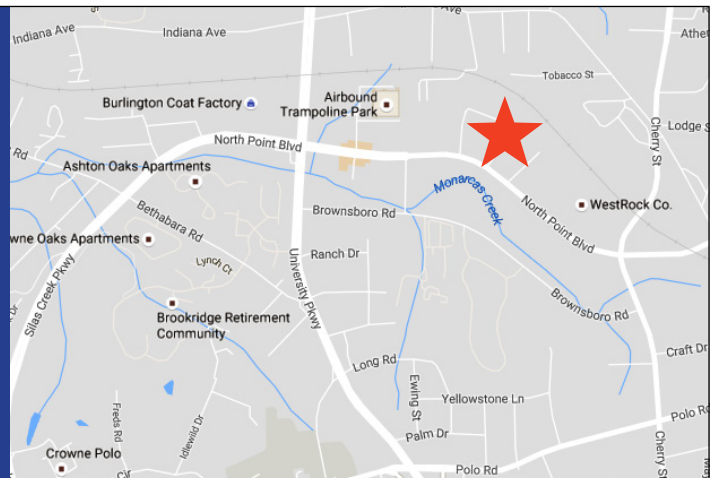
FOR LEASE: \$1,500 Per Month

WWW.MERIDIANREALTY.COM

Floor Plan



- 1,196± sf available
- Excellent visibility on high traffic road
- Ample parking Tenant pays utilities and janitorial
- Lease Rate: \$1,500 per month



No warranty or representation (express or implied) is made as to the accuracy or completeness of the information set forth herein. All information is submitted subject to errors, omissions, change of price, prior lease or sale, and withdrawal without notice. All marketing material produced by the Meridian Realty Group is proprietary. Any reproduction is expressly prohibited.



THE MERIDIAN REALTY GROUP | 147 S. CHERRY STREET, SUITE 200 | WINSTON-SALEM, NC 27101

P 336.722.1986 | F 336.723.3173

WWW.MERIDIANREALTY.COM