



FOR SALE

WALNUT CREEK ACADEMY

1751 N. WALNUT CREEK DRIVE
MANSFIELD, TX 76063

WALNUT CREEK ACADEMY

1751 N. WALNUT CREEK DRIVE
MANSFIELD, TX 76063



PROPERTY SUMMARY

This property presents a great opportunity for various uses such as a charter school, day care facility, church, or other retail purposes. With a dedicated playground already on the premises, the property is well-suited for institutions that cater to educational or community-oriented activities. Additionally, there is available land for potential expansion, allowing flexibility for future growth and development.

WALNUT CREEK ACADEMY

1751 N. WALNUT CREEK DRIVE
MANSFIELD, TX 76063

PROPERTY HIGHLIGHTS

± 4.00 ACRES

**20,105 SQUARE FEET
MAIN BUILDING**

**C-2 ZONING
ACRES**

**50 PARKING SPACES
SURFACED**

**±35K VEHICLES PER DAY
HARD CORNER**



PROPERTY VIDEO
CLICK TO VIEW





PROPERTY DETAILS



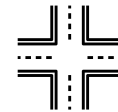
GREAT OPPORTUNITY FOR
CHARTER SCHOOL, DAY CARE,
CHURCH OR OTHER RETAIL USE



PLAYGROUND ON PREMISES



ADDITIONAL LAND FOR
EXPANSION



SIGNALIZED INTERSECTION
SWC OF DEBBIE & WALNUT CREEK



CURRENTLY USED AS A SCHOOL



WALNUT CREEK ACADEMY

1751 N. WALNUT CREEK DRIVE
MANSFIELD, TX 76063

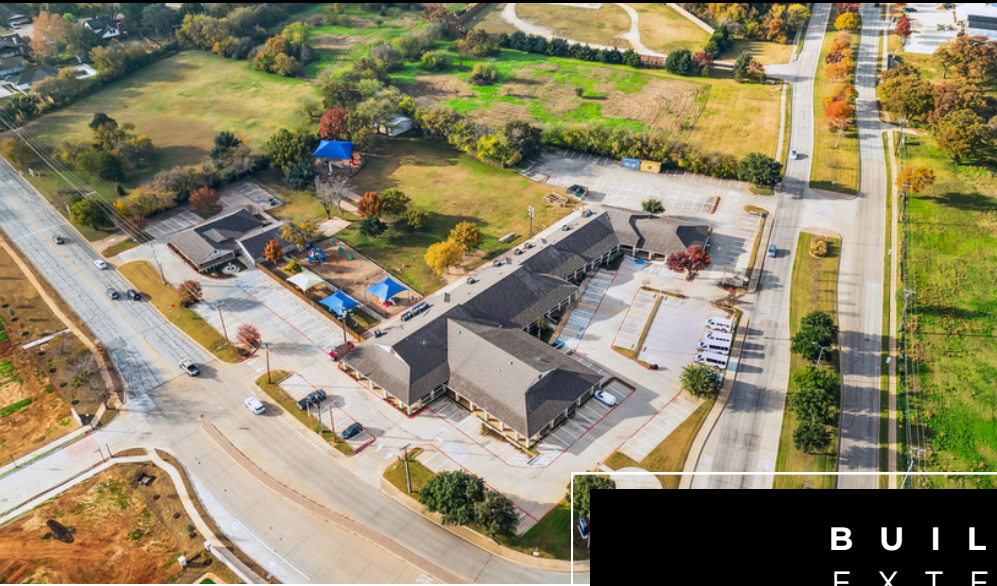


BUILDING EXTERIOR



WALNUT CREEK ACADEMY

1751 N. WALNUT CREEK DRIVE
MANSFIELD, TX 76063



BUILDING
EXTERIOR

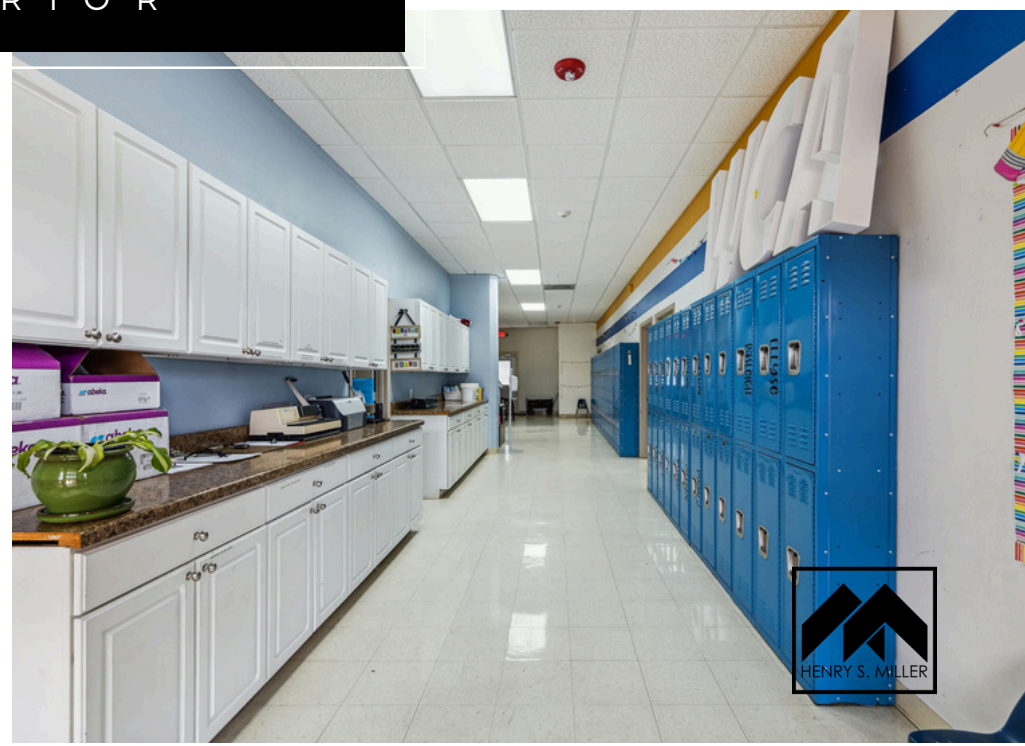
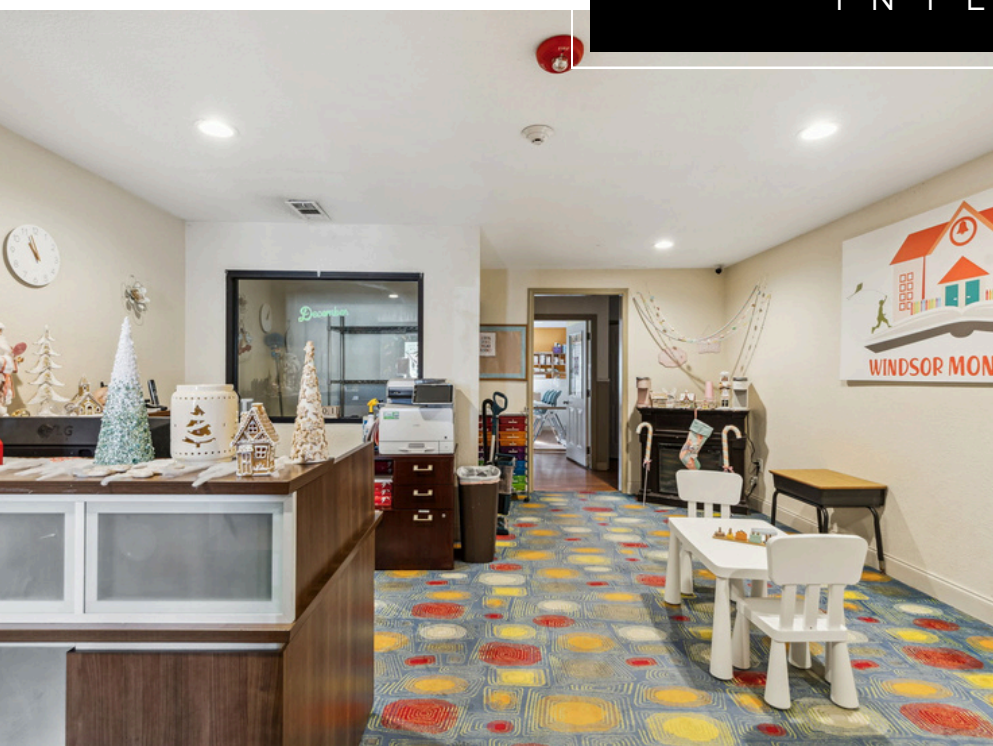


WALNUT CREEK ACADEMY

1751 N. WALNUT CREEK DRIVE
MANSFIELD, TX 76063



BUILDING INTERIOR



WALNUT CREEK ACADEMY

1751 N. WALNUT CREEK DRIVE
MANSFIELD, TX 76063



BUILDING INTERIOR



WALNUT CREEK ACADEMY

1751 N. WALNUT CREEK DRIVE
MANSFIELD, TX 76063



BUILDING INTERIOR

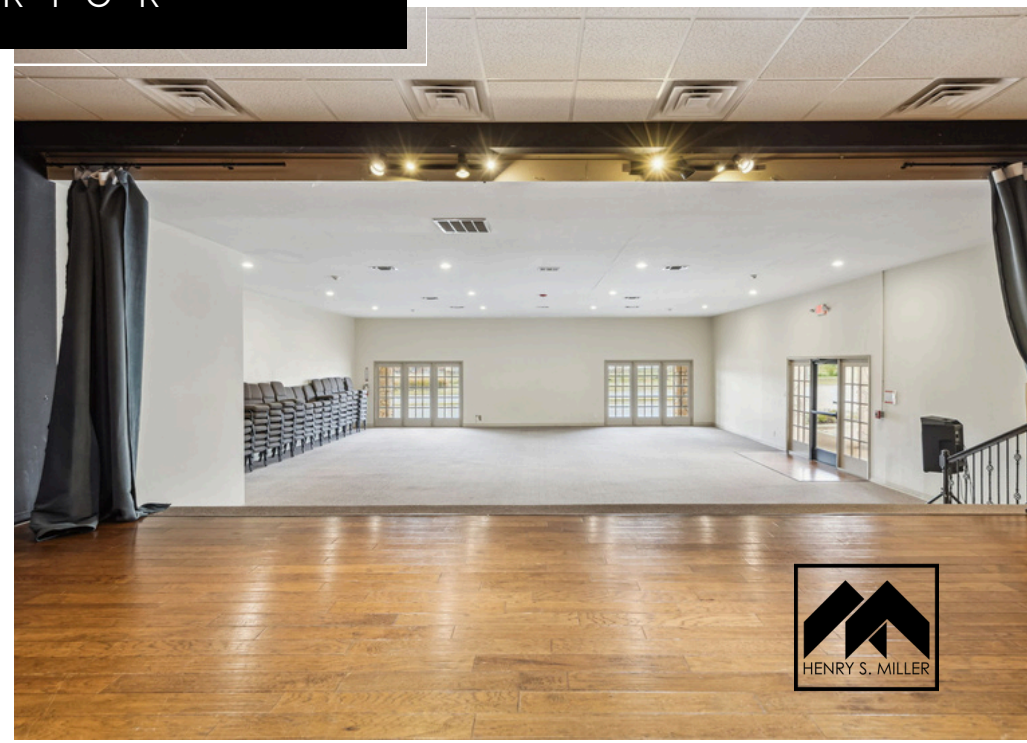


WALNUT CREEK ACADEMY

1751 N. WALNUT CREEK DRIVE
MANSFIELD, TX 76063



BUILDING INTERIOR

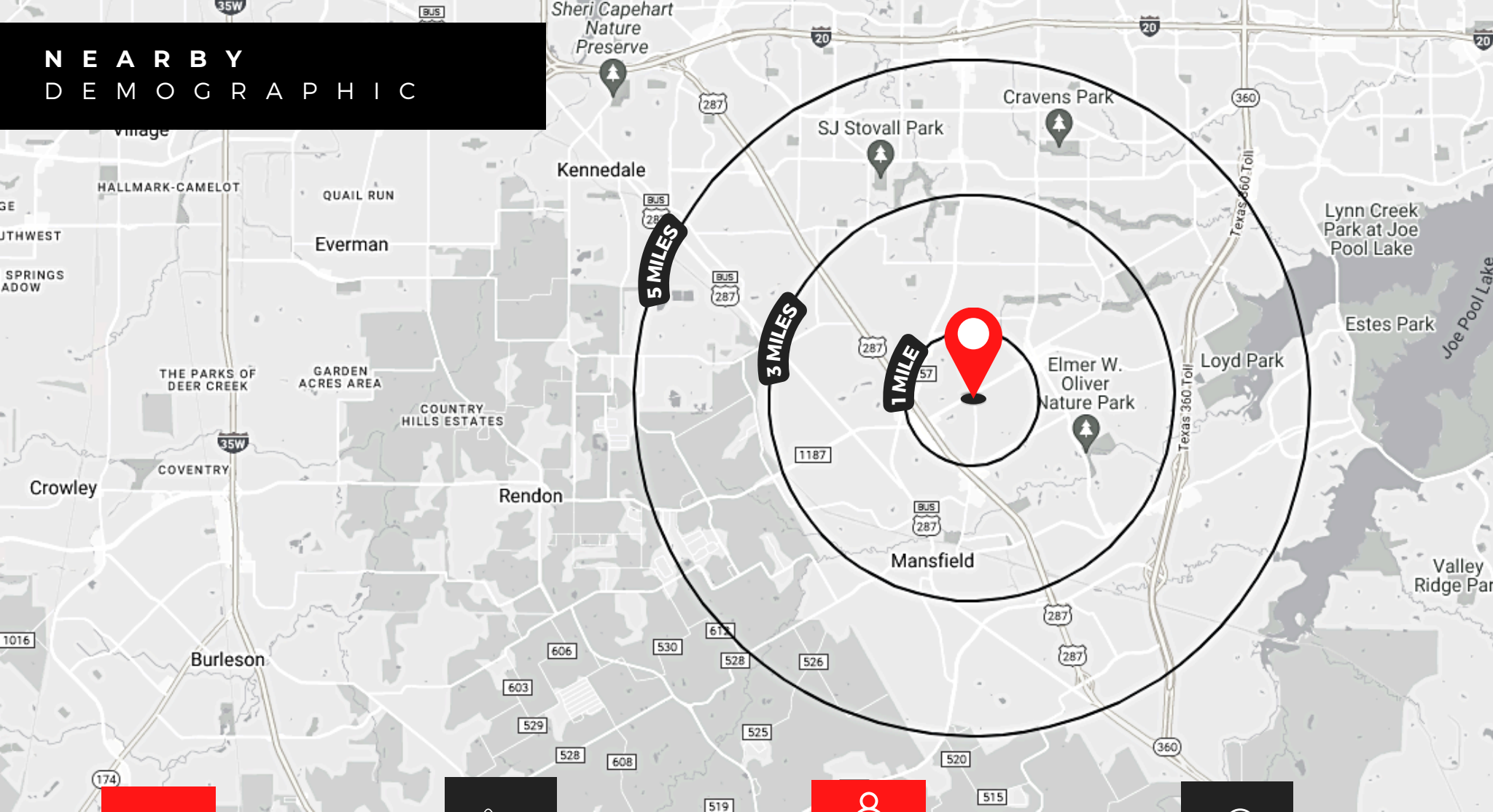


WALNUT CREEK ACADEMY

1751 N. WALNUT CREEK DRIVE
MANSFIELD, TX 76063



NEARBY DEMOGRAPHIC



2025 Population

1 MILES	11,980
3 MILES	93,256
5 MILES	216,288



2025 Households

1 MILES	4,026
3 MILES	30,858
5 MILES	71,485



2025 Population By Age (0-10)

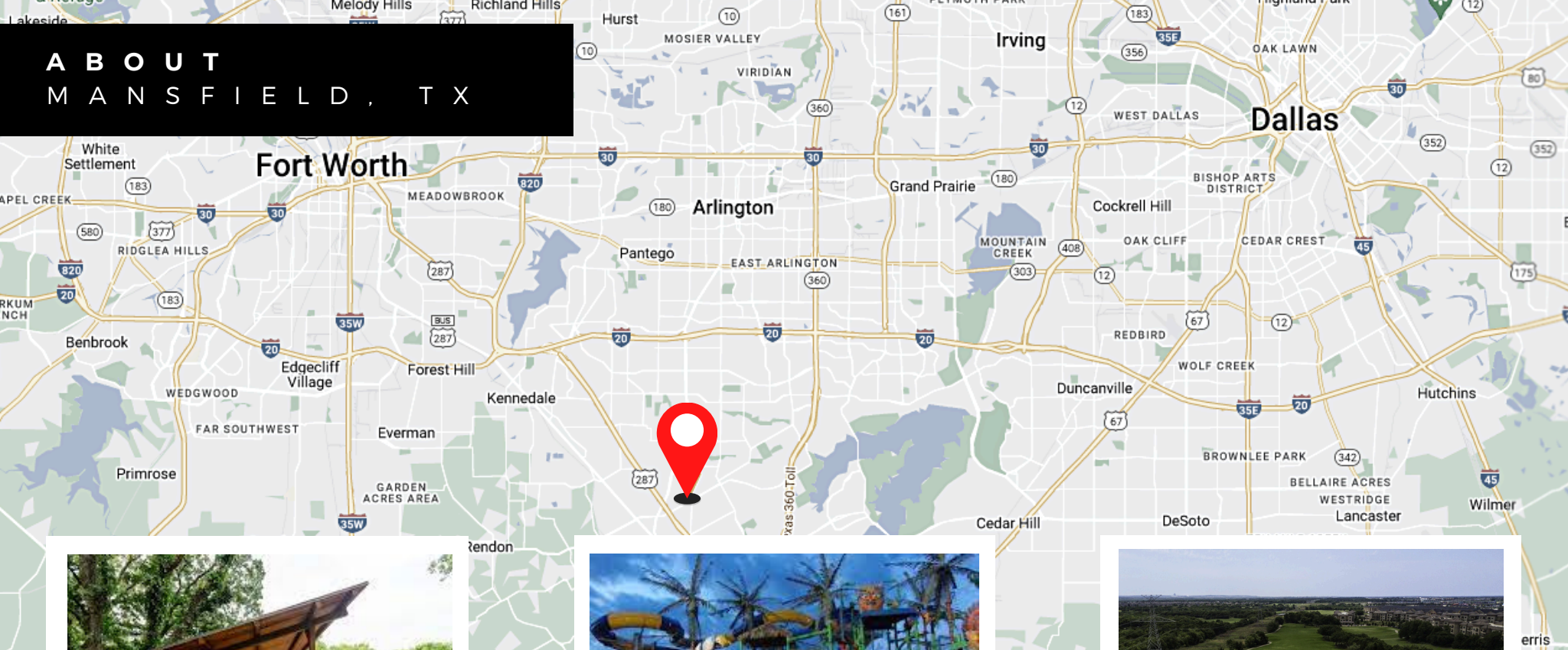
1 MILES	11.8%
3 MILES	12.5%
5 MILES	13.1%



2025 Average Household Income

1 MILES	\$163,237
3 MILES	\$147,560
5 MILES	\$143,518

ABOUT MANSFIELD, TX



ELMER W. OIVER NATURE PARK



HAWAIIAN FALLS WATERPARK



MANSFIELD NATIONAL GOLF CLUB

Mansfield, situated in the U.S. state of Texas, is a suburban city within the Dallas-Fort Worth metroplex area. Predominantly located in Tarrant County, it also has small portions in Ellis and Johnson counties. Positioned approximately 30 miles from Dallas, 20 miles from Fort Worth, and adjacent to Arlington, Mansfield provides a convenient location. A short drive from the Arlington entertainment district, downtown Fort Worth, and DFW Airport, Mansfield offers a blend of small-town hospitality and charm, providing visitors a refreshing change of pace from the urban tourist destinations of the DFW area.



C O N T A C T U S

PHILLIP STRENGTH

VICE PRESIDENT

(972) 386-1445 Direct

(214) 316-0067 Mobile

pstrength@henrysmiller.com

HENRY S. MILLER BROKERAGE, LLC

5151 Belt Line Road, Suite 900

Dallas, Texas 75254

www.henrysmiller.com

NOTICE & DISCLAIMER: The enclosed information is from sources believed to be reliable, but Henry S. Miller Brokerage, LLC has not verified the accuracy of the information. Henry S. Miller Brokerage, LLC makes no guarantee, warranty or representation as to the information, and assumes no responsibility for any error, omission or inaccuracy. The information is subject to the possibility of errors, omissions, changes of condition, including price or rental, or withdrawal without notice. Any projections, assumptions or estimates are for illustrative purposes only. Recipients should conduct their own investigation.

