

# Commercial Leasing Opportunity JUDGE REALTY



## **The 912 Apartments**

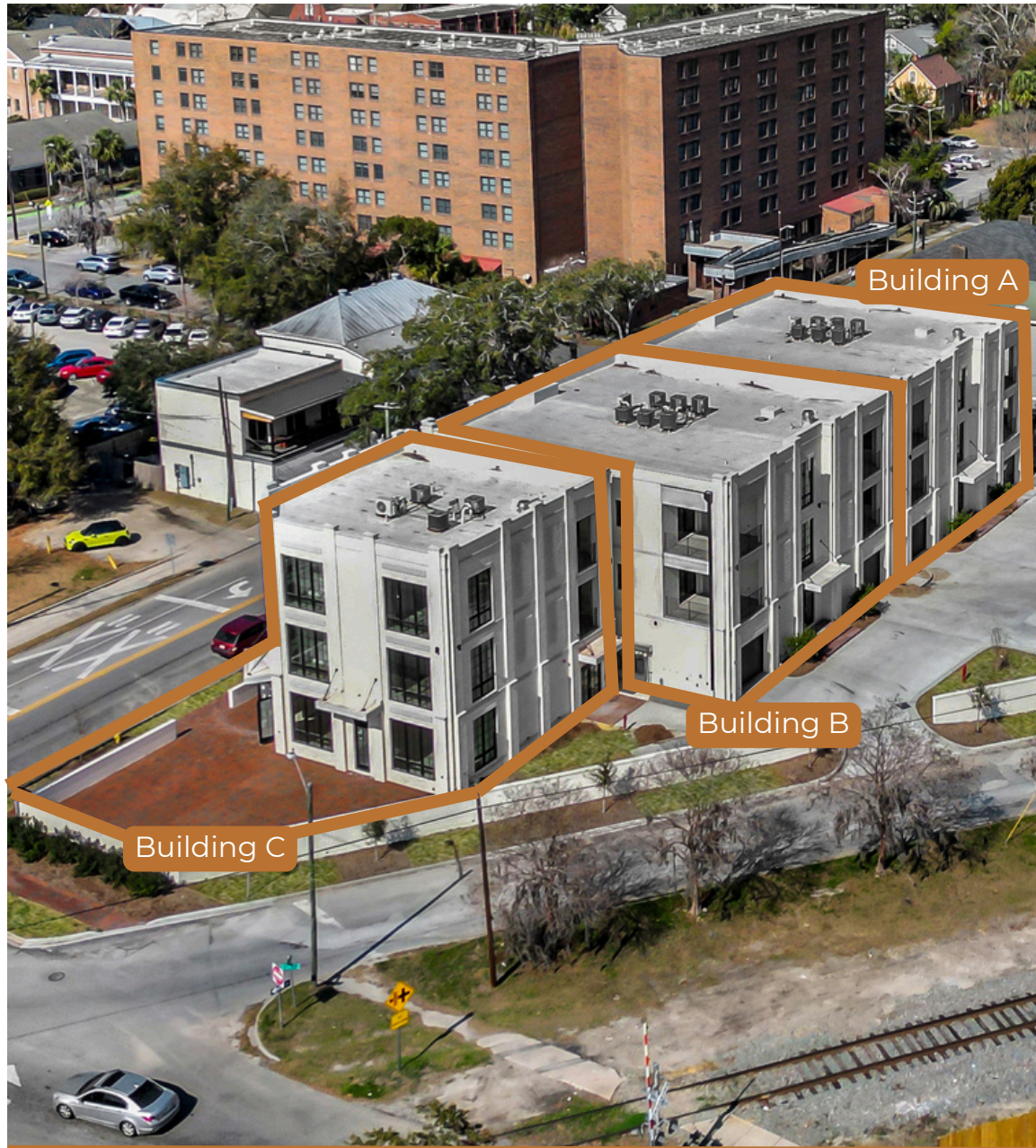
Brand New Commercial Units

in the heart of Midtown

912.236.1000 | [info@judgerealty.com](mailto:info@judgerealty.com) | [the912apartments.com](http://the912apartments.com)



# PROPERTY OVERVIEW



## Commercial space opportunity

- 5 Commercial Units Available
- Street facing frontage
- Easy off street parking for guest
- Unit C includes outdoor patio space and a prime corner location
- Mixed-use development
- Commercial units for retailers, offices, or eateries, these versatile commercial spaces.
- The upper floors consist of 10 residential units, offering modern living with a blend of comfort and convenience.
- Situated in the Starland District, residents and businesses will enjoy easy access to local amenities.

# BUILDINGS A & B

Retail/Office

\$4,500 Monthly NNN



- 1,200-2,400 SF
- Inviting courtyard area
- Frontage on Habersham Street
- Easy access to parking

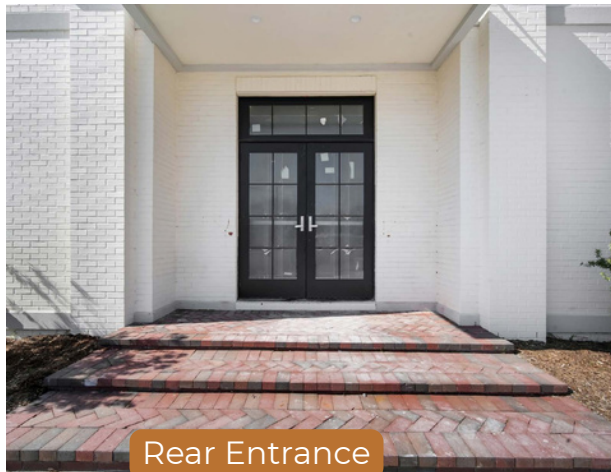


# BUILDINGS A&B

Common Areas/Exteriors



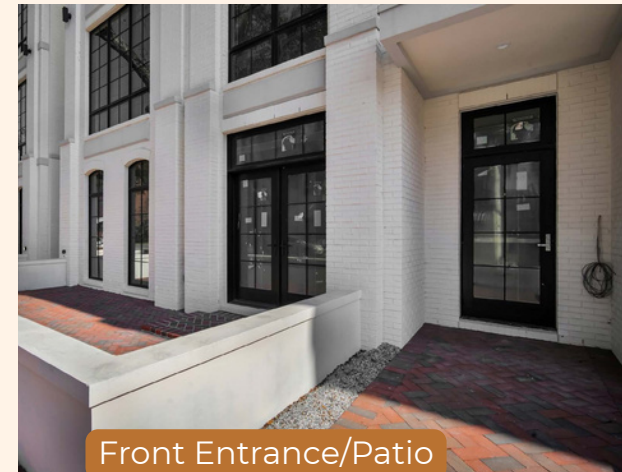
Rear Common Area Entrance



Rear Entrance



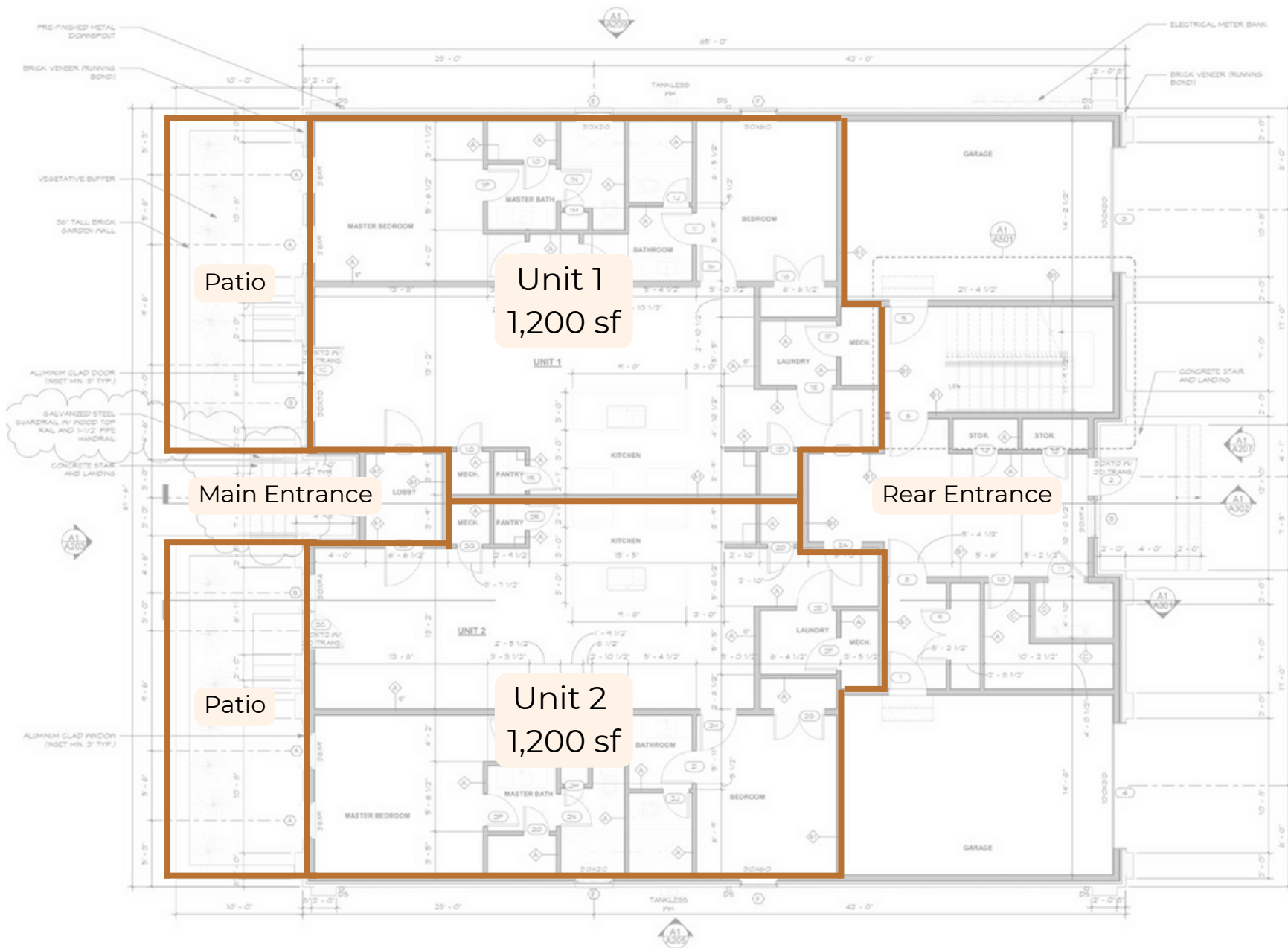
Front Common Area Entrance



Front Entrance/Patio

# FLOOR PLANS/BUILDINGS A & B

Office/Retail



# BUILDING C

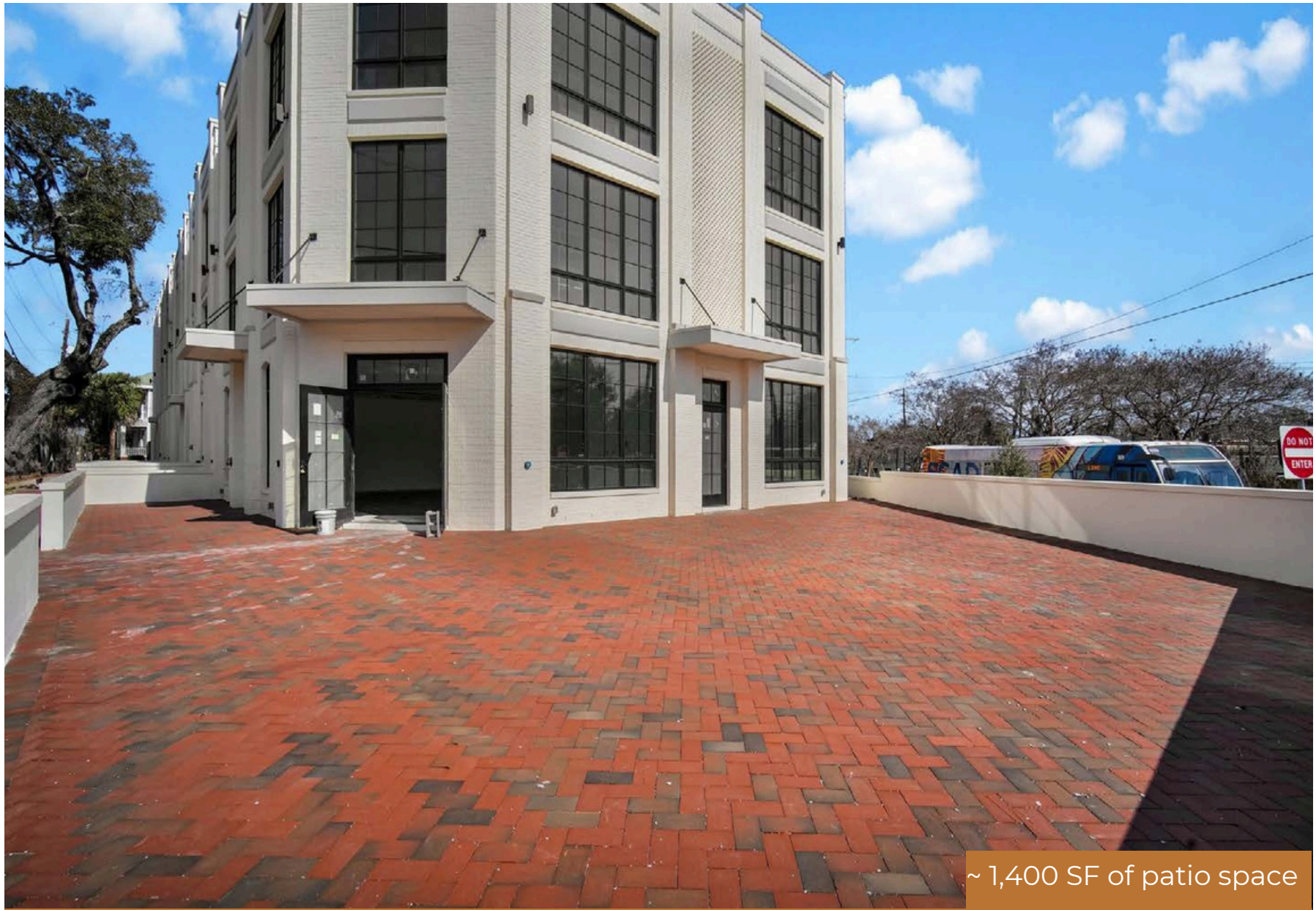
\$8,500 Monthly NNN



- 1,334 SF restaurant space
- Additional 1,400 SF of patio space
- Frontage on the corner of Habersham and 37th Street - high traffic area
- Currently a vanilla shell - blank slate for a variety of concepts

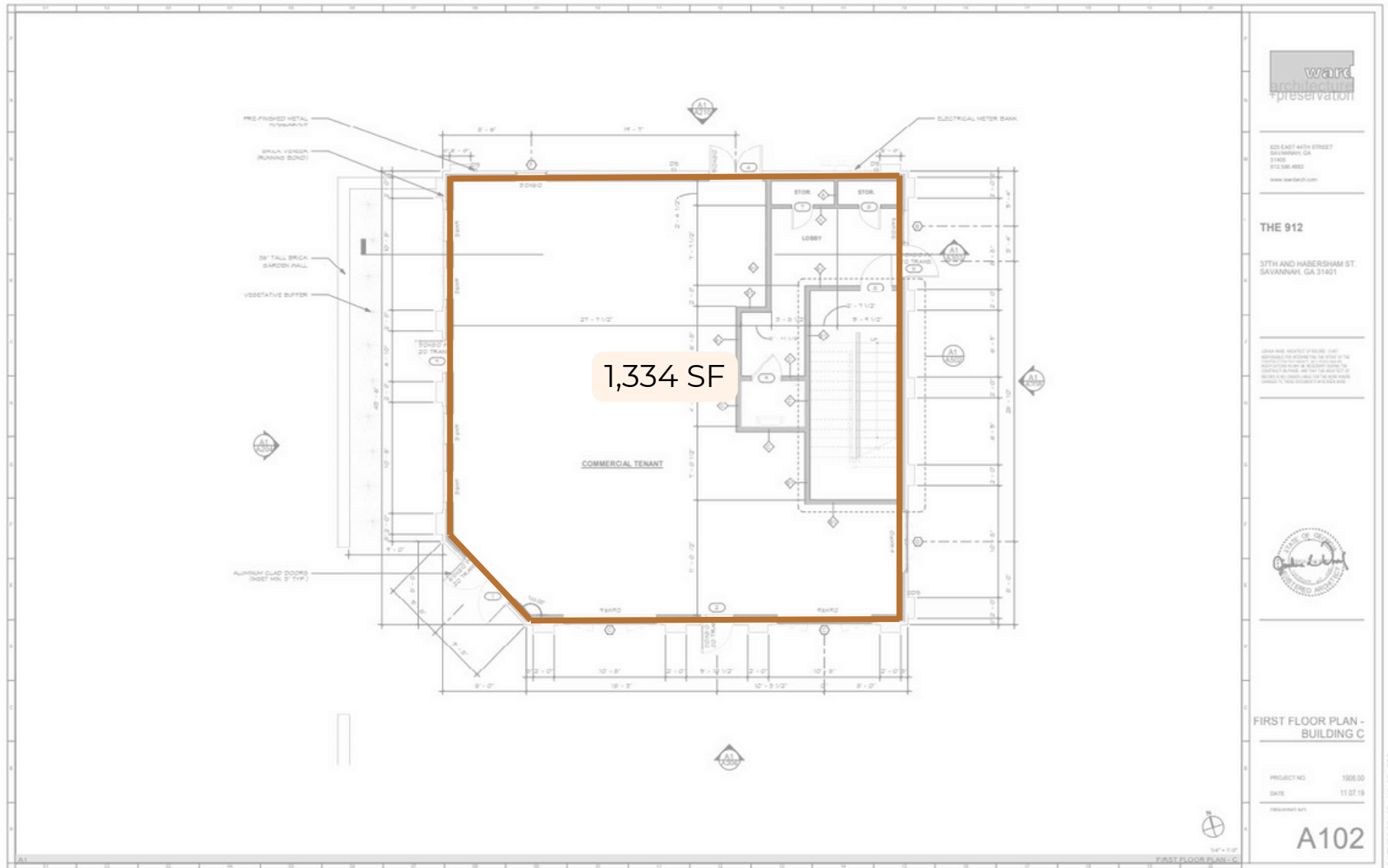


# BUILDING C



~ 1,400 SF of patio space

# FLOOR PLANS/BUILDING C









# SURROUNDING ATTRACTIONS



Common Thread



Late Air



The Vault Kitchen and Market







912.236.1000 | [info@judgerealty.com](mailto:info@judgerealty.com) | [judgerealty.com](http://judgerealty.com)



Lori Judge  
CEO  
cell: 912-484-1514  
[lori@judgerealty.com](mailto:lori@judgerealty.com)



Alex Hansbarger  
Commercial Leasing and Sales  
cell: 912-509-2108  
[alex@judgerealty.com](mailto:alex@judgerealty.com)

