

# 1380 SOUTH ZACK HINTON PARKWAY

MCDONOUGH,  
GA 30253

Industrial Property For Sale

**BRYAN MARSHBURN, SIOR, CCIM**  
Senior Vice President  
404.942.2044  
bmarshburn@kingindustrial.com

**King** Industrial  
Realty, Inc.

Industrial • Commercial • Investment  
404.942.2000 | [kingindustrial.com](http://kingindustrial.com)



FOR SALE  
9,950± SF



## PROPERTY HIGHLIGHTS

- 100% HVAC
- (4) 14'x12' Drive-In Doors
- 15' Clear Height
- Clear Span Building
- Flexible C-3 Zoning in City of McDonough
- Building can be Demised into 5 Suites
- Just Off Corner of Highway 155 and Racetrack Road
- 2.1± Miles to I-75 at Hwy 155/Exit 216
- 2 Additional Lots Totaling 2.78± Acres For Sale (1.1± & 1.67± acre lots)



# AERIAL PHOTO



Industrial • Commercial • Investment  
404.942.2000 | kingindustrial.com

**BRYAN MARSHBURN, SIOR, CCIM**

Senior Vice President

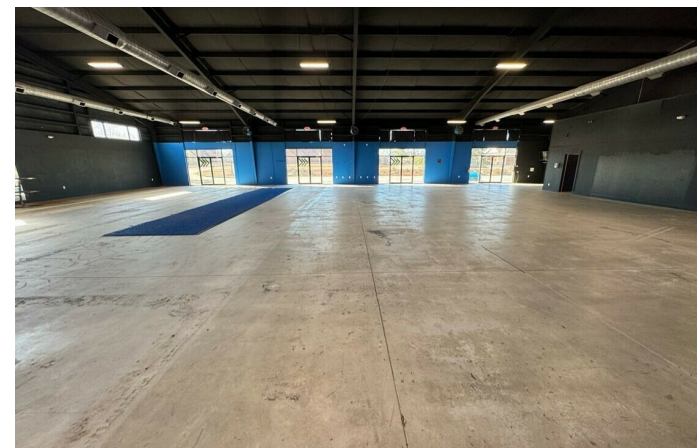
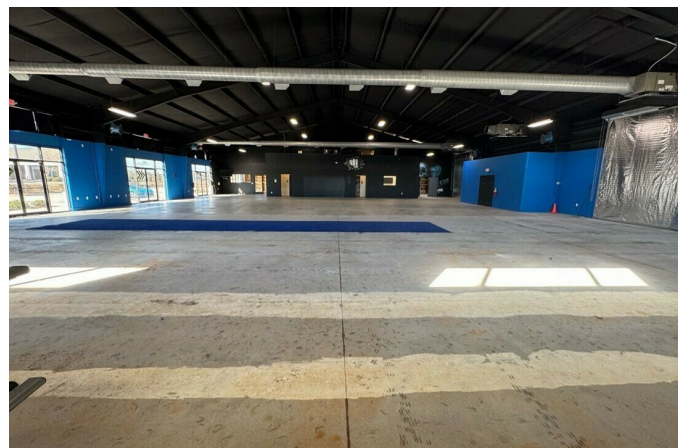
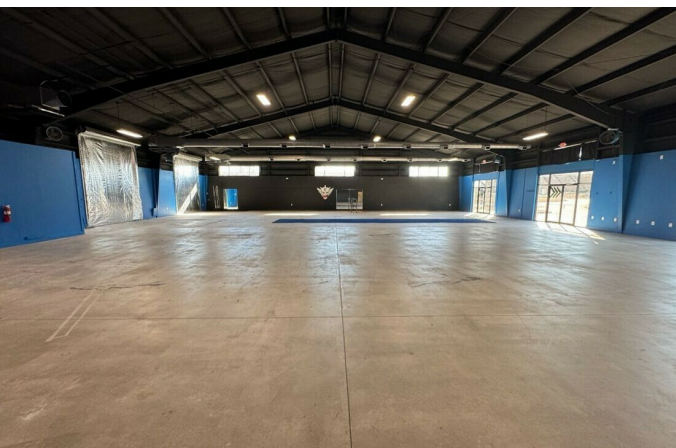
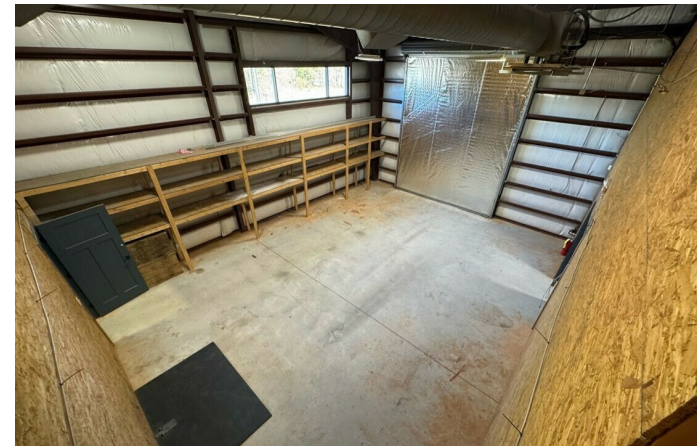
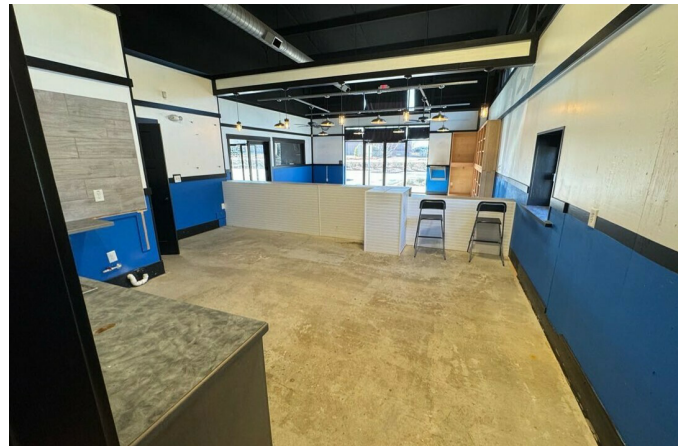
404.942.2044

bmarshburn@kingindustrial.com

*Every effort has been made to provide accurate information, but no liability is assumed for errors or omissions.*



# ADDITIONAL PHOTOS



**BRYAN MARSHBURN, SIOR, CCIM**

Senior Vice President

404.942.2044

bmarshburn@kingindustrial.com

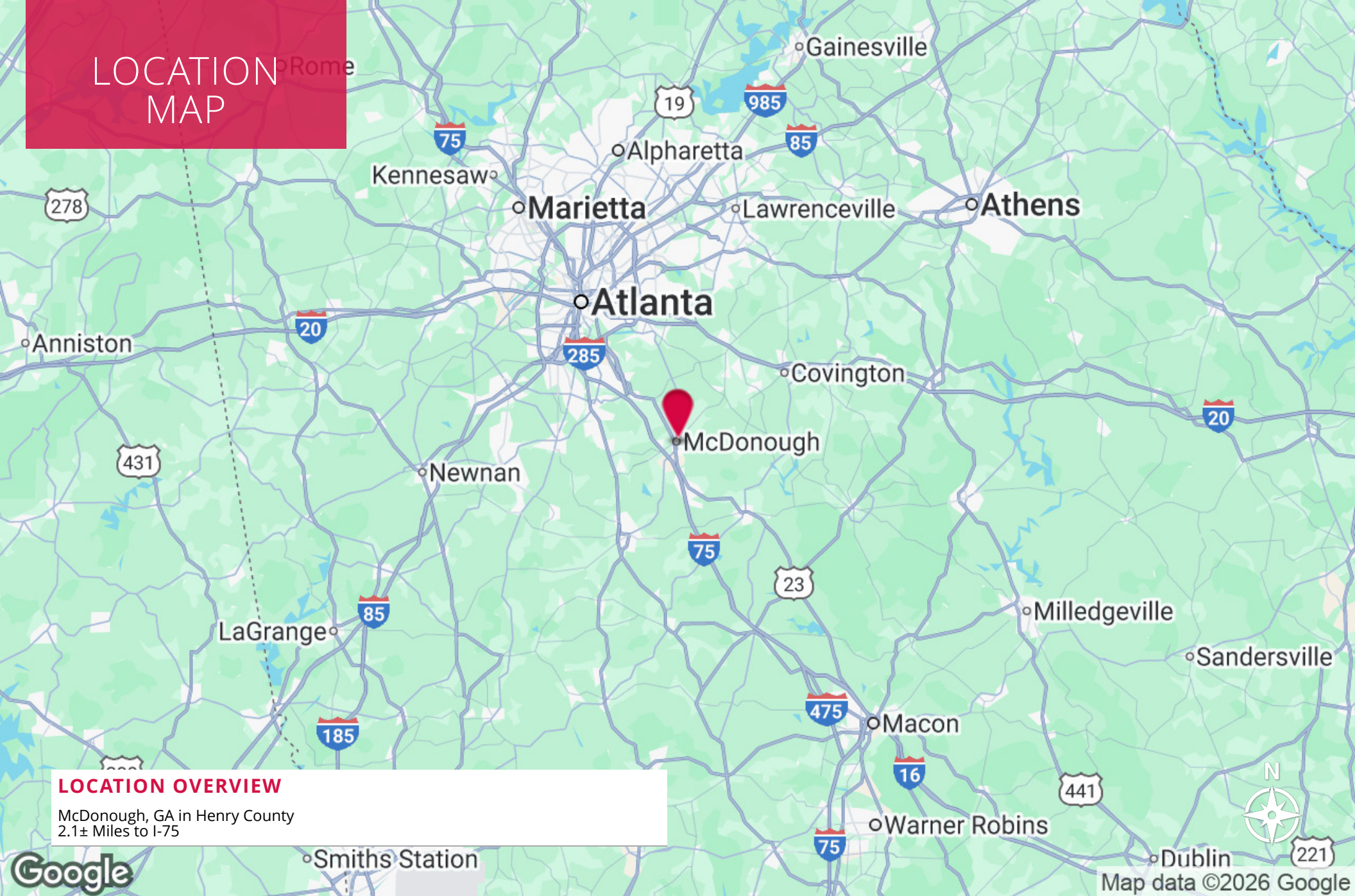
*Every effort has been made to provide accurate information, but no liability is assumed for errors or omissions.*

**King** Industrial  
Realty, Inc. **CORFAC**  
INTERNATIONAL

Industrial • Commercial • Investment  
404.942.2000 | kingindustrial.com



# LOCATION MAP



## LOCATION OVERVIEW

McDonough, GA in Henry County  
2.1± Miles to I-75

EXCLUSIVELY LISTED BY:

**BRYAN MARSHBURN, SIOR, CCIM**

*Senior Vice President*

[bmarshburn@kingindustrial.com](mailto:bmarshburn@kingindustrial.com)

404.942.2044

**King** Industrial  
Realty, Inc.

Industrial • Commercial • Investment  
404.942.2000 | [kingindustrial.com](http://kingindustrial.com)