

# FOR LEASE - REDEVELOPMENT

## Anadarko, OK 73005

730 W Petree Road, Anadarko, OK 73005

**4,480 SF Retail**  
**10,000 - 51,000 SF**



Phase 1



Phase 2

### Property Features

- Redevelopment of a former Walmart and grocery store in Anadarko, OK
- Join Dollar Tree, Variety Care, Security Finance, The Kiowa Tribe, T-Mobile and World Acceptance
- Anadarko is the county seat of Caddo County
- Site is situated between Walmart Super Center and the city
- Anadarko is the “Indian Capital of the Nation” with over 6 tribal communities

**Base Rent: Negotiable**  
**Estimated NNNs: \$2.99 psf**

### City of Anadarko (5 Mile Radius)

Population.....6,979  
 Average Household Income .....\$65,444

### Trade Area (20 Mile Radius)

Population.....44,545  
 Average Household Income .....\$76,394



FOR MORE INFORMATION:

Troy Humphrey

thumphrey@LRCRE.com

405-219-7500

114 N.W. 6<sup>th</sup> Street, Suite 206  
 Oklahoma City, OK 73102  
 Office: 405.231.5700  
 www.LRCRE.com

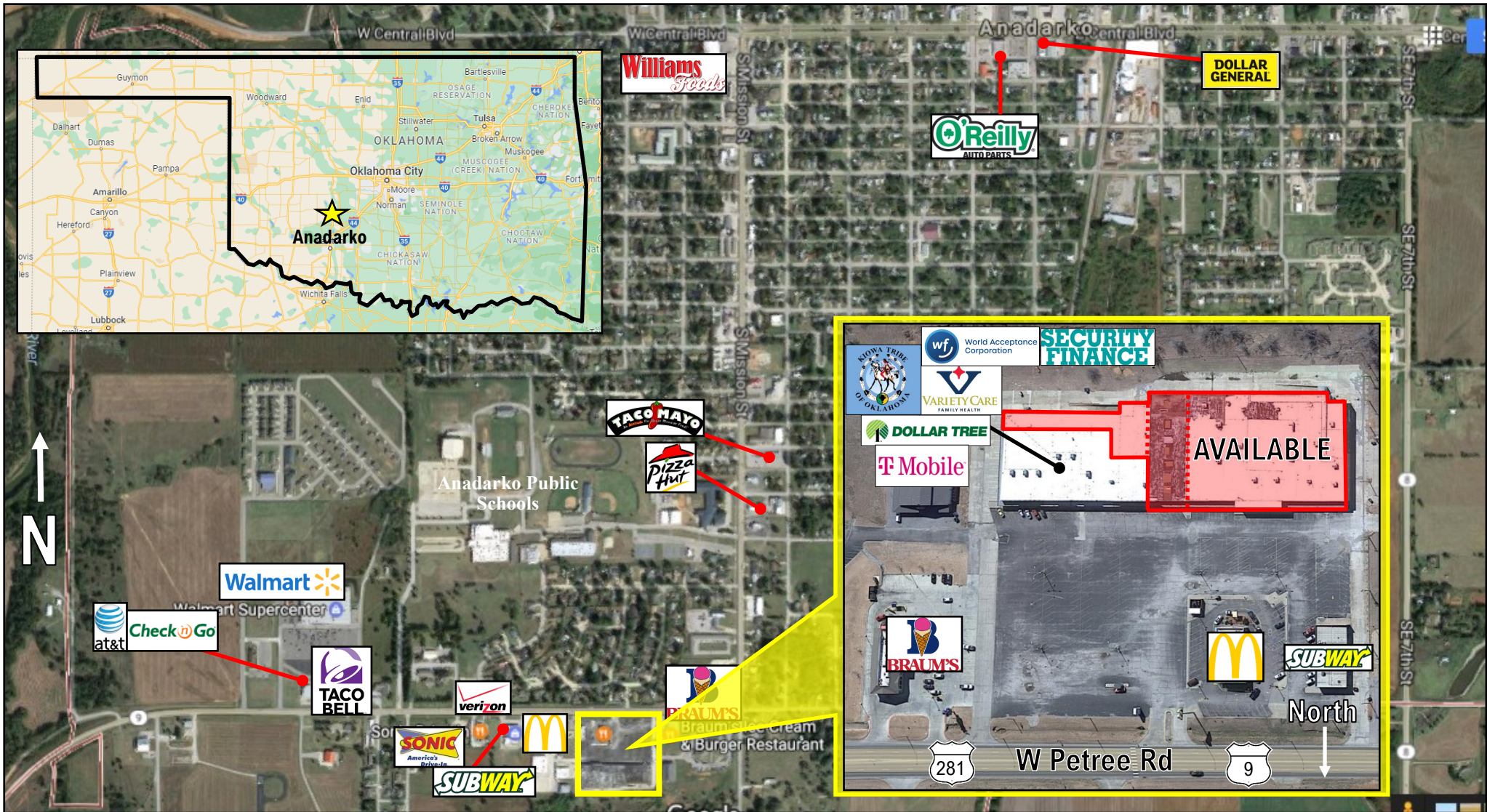
The information above is believed to be accurate and reliable but is not warranted and may change without notice. Land Run Commercial Real Estate Advisors, LLC makes no guarantees, warranties or representations about the property and recommends tenants independent investigation as to the accuracy thereof.

# FOR LEASE - REDEVELOPMENT

## Anadarko, OK 73005

730 W Petree Road, Anadarko, OK 73005

4,480 SF Retail  
10,000 - 51,000 SF



Troy Humphrey

FOR MORE INFORMATION:

thumphrey@LRCRE.com

405-219-7500

114 N.W. 6<sup>th</sup> Street, Suite 206  
Oklahoma City, OK 73102  
Office: 405.231.5700  
www.LRCRE.com

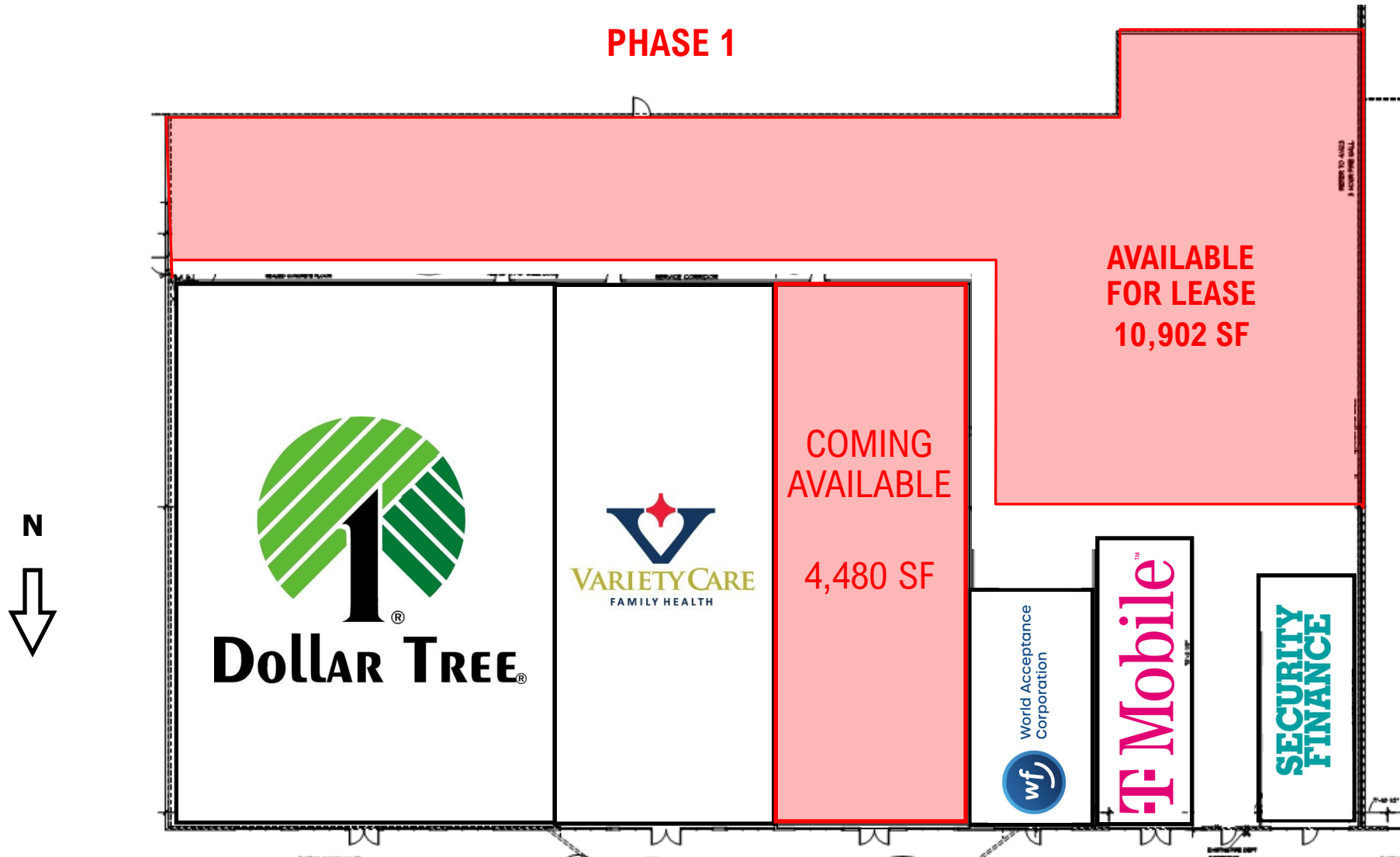
The information above is believed to be accurate and reliable but is not warranted and may change without notice. Land Run Commercial Real Estate Advisors, LLC makes no guarantees, warranties or representations about the property and recommends tenants independent investigation as to the accuracy thereof.

# FOR LEASE - REDEVELOPMENT

Anadarko, OK 73005

730 W Petree Road, Anadarko, OK 73005

4,480 SF Retail  
10,000 - 51,000 SF



FOR MORE INFORMATION:

Troy Humphrey

thumphrey@LRCRE.com

405-219-7500

114 N.W. 6<sup>th</sup> Street, Suite 206  
Oklahoma City, OK 73102  
Office: 405.231.5700  
www.LRCRE.com

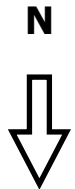
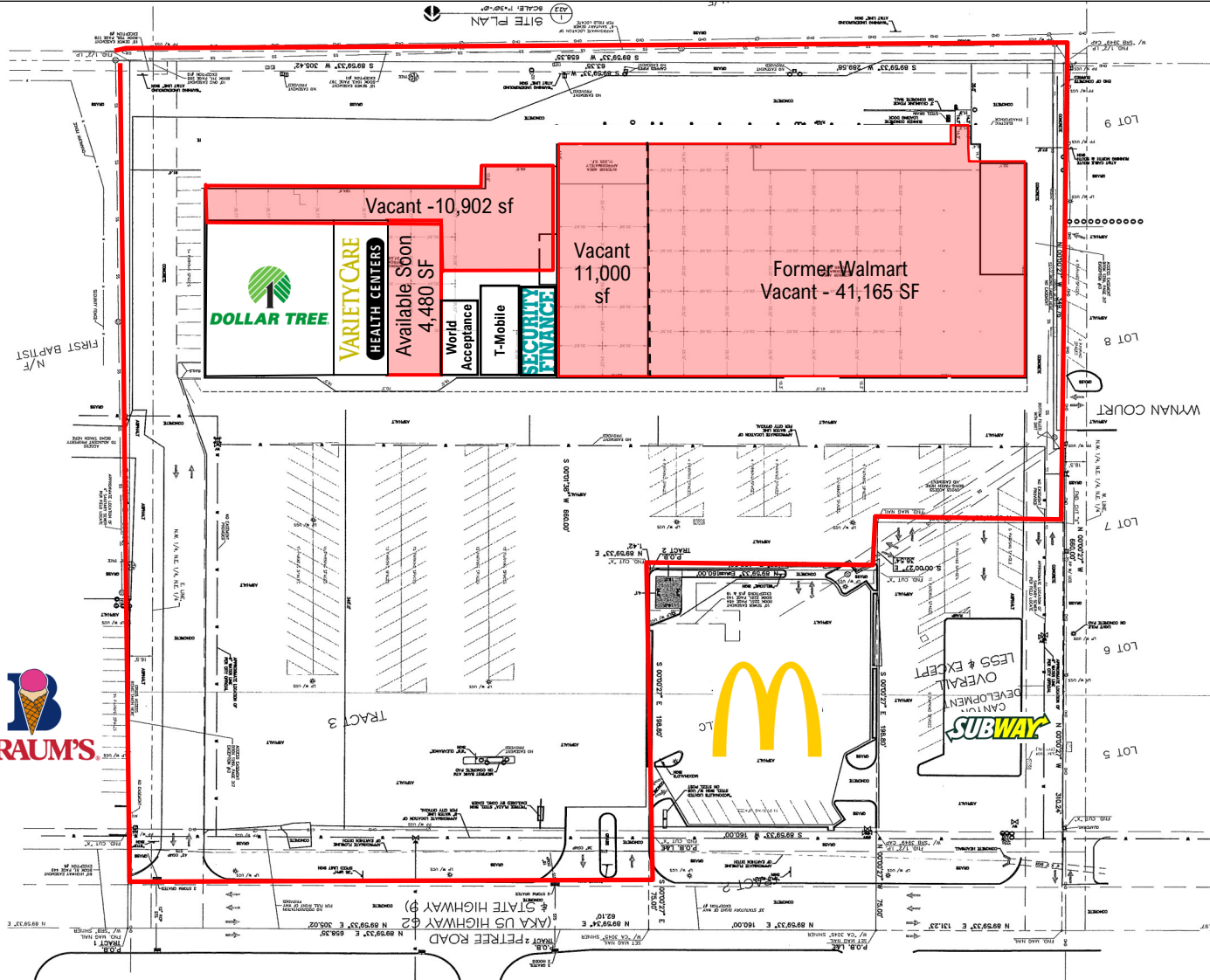
The information above is believed to be accurate and reliable but is not warranted and may change without notice. Land Run Commercial Real Estate Advisors, LLC makes no guarantees, warranties or representations about the property and recommends tenants independent investigation as to the accuracy thereof.

# FOR LEASE - REDEVELOPMENT

## Anadarko, OK 73005

730 W Petree Road, Anadarko, OK 73005

**4,480 SF Retail**  
**10,000 - 51,000 SF**



FOR MORE INFORMATION:

Troy Humphrey

thumphrey@LRCRE.com

405-219-7500

114 N.W. 6<sup>th</sup> Street, Suite 206  
Oklahoma City, OK 73102  
Office: 405.231.5700  
www.LRCRE.com

The information above is believed to be accurate and reliable but is not warranted and may change without notice. Land Run Commercial Real Estate Advisors, LLC makes no guarantees, warranties or representations about the property and recommends tenants independent investigation as to the accuracy thereof.