

OFFICE SPACE FOR LEASE



Property Highlights

±6,189 RSF available

Full floor tenancy with kitchen and server room

1 large conference room and 8 private offices

Ample open office area

Potential to split the space into 2 tenants

Building & monument signage

Located a block from City Hall, the post office, and Hampton Inn, and 3/4 mile to Daly City BART

For more leasing information contact

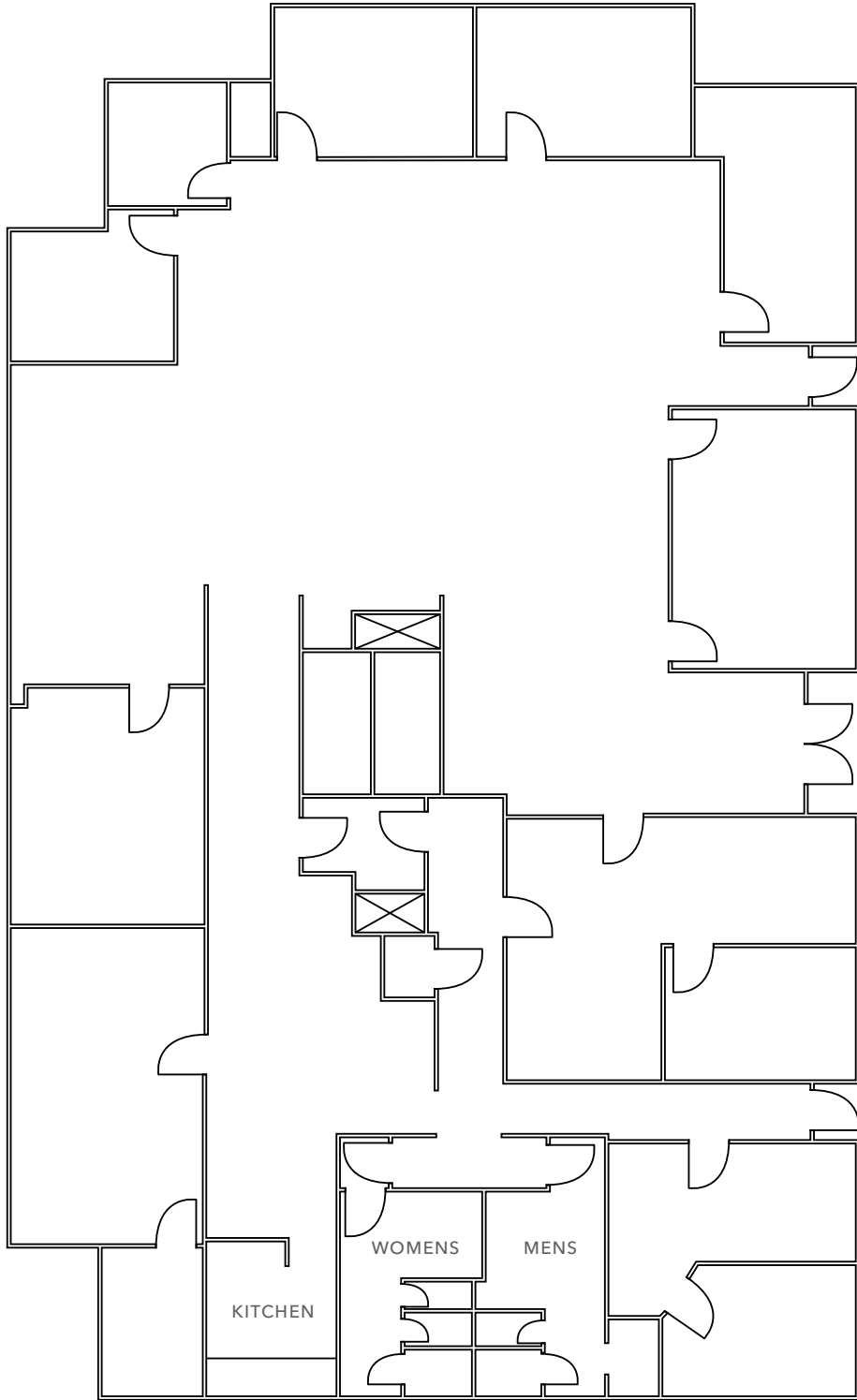
JOE CAMMARATA
Kidder Mathews
650.769.3516
joe.cammarata@kidder.com
LIC N° 01366451

NEIL COWPERTHWAIT
Lee Associates
415.302.6940
ncowperthwaite@lee-associates.com
LIC N° 01912683

KIDDER.COM

This information supplied herein is from sources we deem reliable. It is provided without any representation, warranty, or guarantee, expressed or implied as to its accuracy. Prospective Buyer or Tenant should conduct an independent investigation and verification of all matters deemed to be material, including, but not limited to, statements of income and expenses. Consult your attorney, accountant, or other professional advisor.

FLOOR PLAN



FLOOR PLAN
NOT TO SCALE

KIDDER.COM

This information supplied herein is from sources we deem reliable. It is provided without any representation, warranty, or guarantee, expressed or implied as to its accuracy. Prospective Buyer or Tenant should conduct an independent investigation and verification of all matters deemed to be material, including, but not limited to, statements of income and expenses. Consult your attorney, accountant, or other professional advisor.





±6,189 SF

AVAILABLE

\$1.85

LEASE RATE (GROSS PER FOOT)

14

PRIVATE PARKING SPACES



KIDDER.COM

This information supplied herein is from sources we deem reliable. It is provided without any representation, warranty, or guarantee, expressed or implied as to its accuracy. Prospective Buyer or Tenant should conduct an independent investigation and verification of all matters deemed to be material, including, but not limited to, statements of income and expenses. Consult your attorney, accountant, or other professional advisor.

