

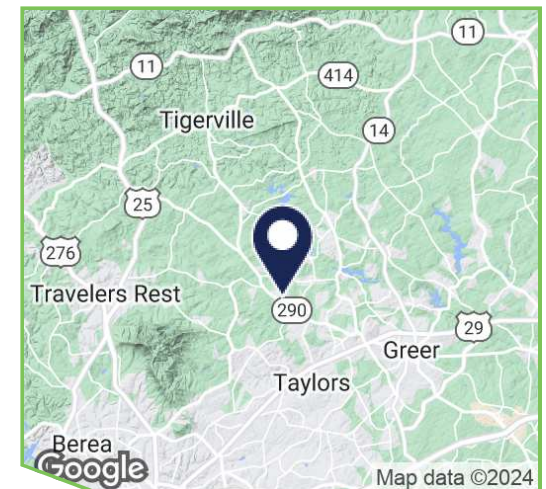
142-150 Edith Drive, Taylors, SC 29687

For Sale

\$585,000

Mobile Home Investment for Sale

- ±4.3 acre mobile home site
- 6 lots, currently 4 rented homes, 1 unrented home, and 1 empty pad
- Unzoned in Greenville County
- Each pad has separate water and electric meters and septic systems
- Two pads have natural gas
- Contact broker for income and expense information
- Owner financing available



**TRINITY
PARTNERS**

Grayson Burgess, CCIM, SIOR / 864.770.3288 / gburgess@trinity-partners.com

The information contained herein was obtained from sources believed reliable; however, Trinity Partners makes no guarantees, warranties, or representations as to the completeness or accuracy thereof. The presentation of this property is submitted subject to errors, omissions, changes of price or conditions prior to sale or lease, or withdrawal without notice.

1 N. MAIN STREET
GREENVILLE, SC 29601
TRINITY-PARTNERS.COM

142-150 Edith Drive, Taylors, SC 29687

For Sale
\$585,000



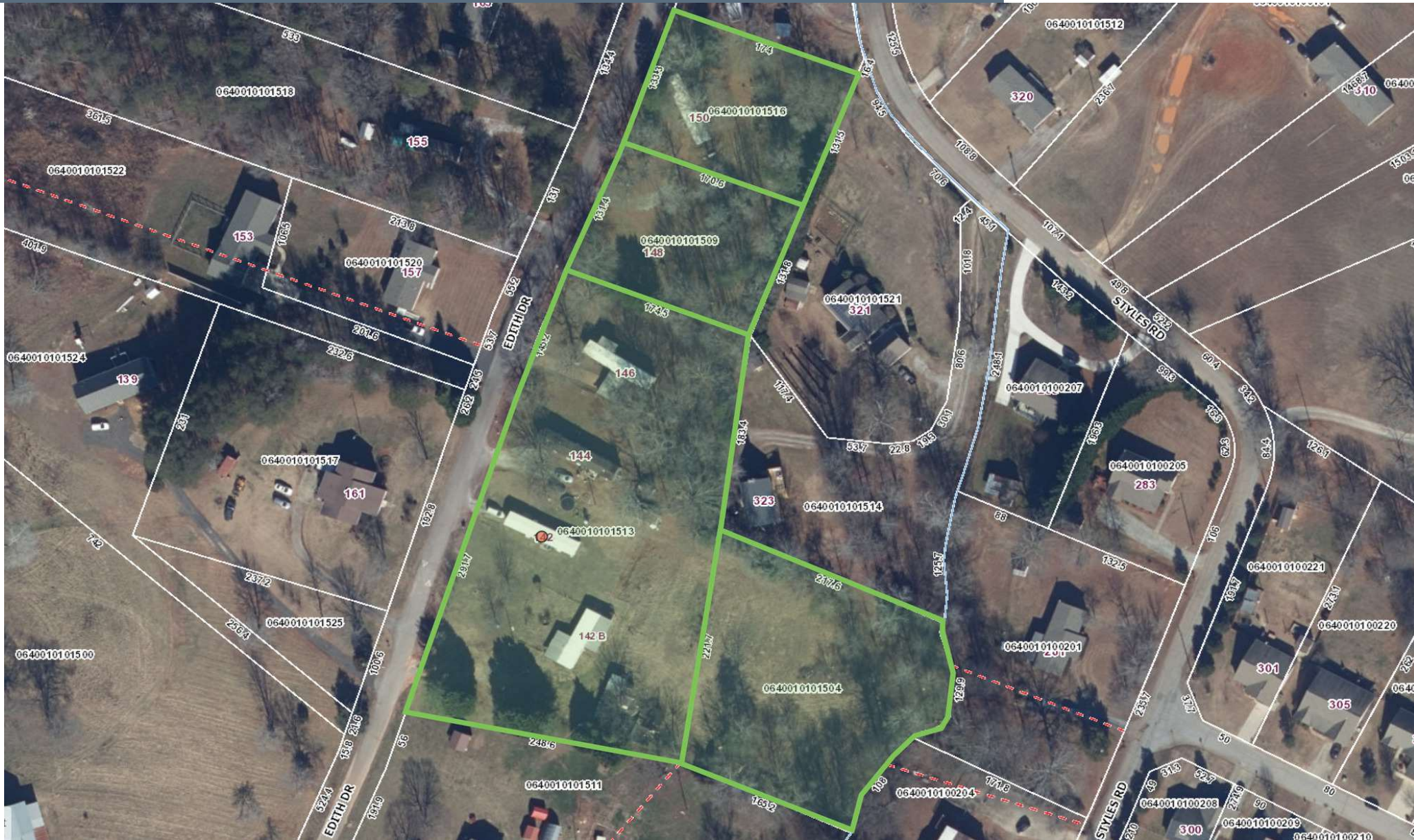
TRINITY
PARTNERS

Grayson Burgess, CCIM, SIOR / 864.770.3288 / gburgess@trinity-partners.com

1 N. MAIN STREET
GREENVILLE, SC 29601
TRINITY-PARTNERS.COM

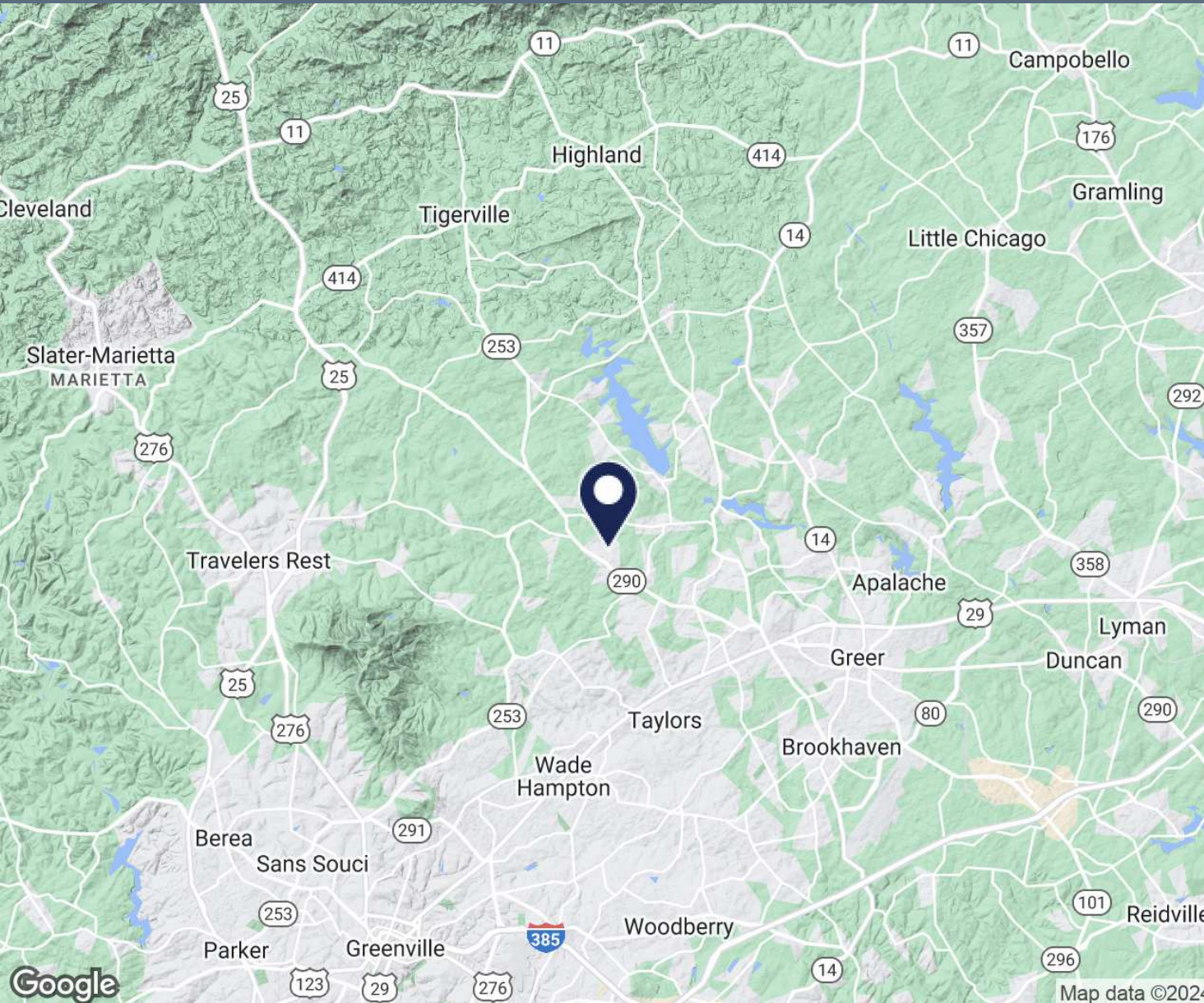
142-150 Edith Drive, Taylors, SC 29687

For Sale
\$585,000



142-150 Edith Drive, Taylors, SC 29687

For Sale
\$585,000

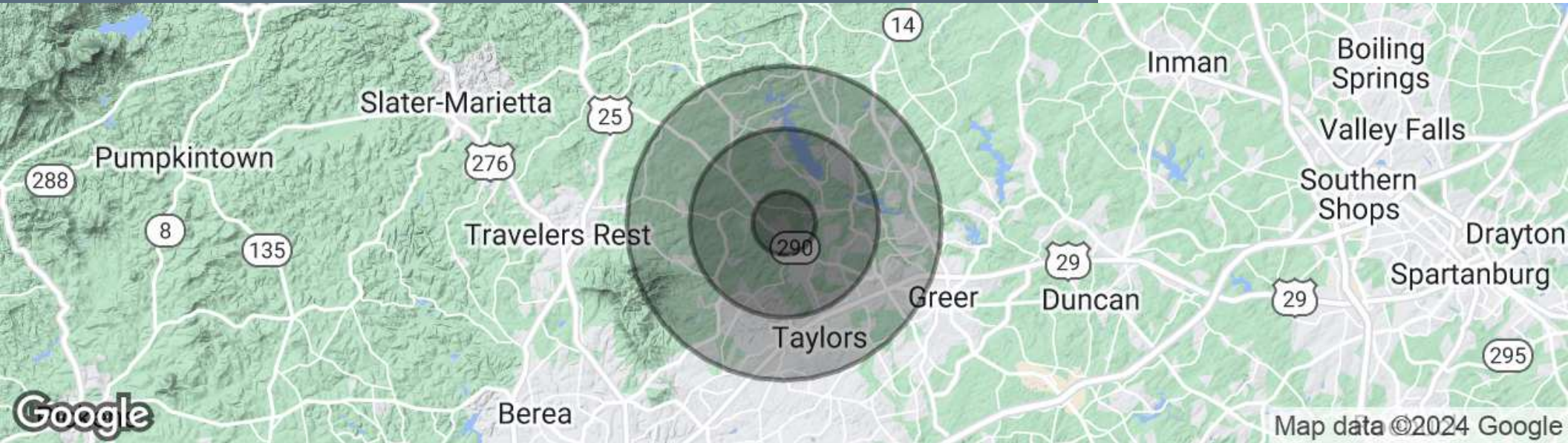


- 11 miles to Downtown Greenville
- 10 miles to Greenville-Spartanburg International Airport
- 10 miles to I-85



142-150 Edith Drive, Taylors, SC 29687

For Sale
\$585,000



Population

	1 Mile	3 Miles	5 Miles
Total Population	2,259	18,658	57,608
Average Age	40.3	43.2	42.9
Average Age (Male)	40.3	42.8	42.0
Average Age (Female)	39.7	42.3	43.0

Households & Income

	1 Mile	3 Miles	5 Miles
Total Households	887	7,615	24,032
# of Persons per HH	2.5	2.5	2.4
Average HH Income	\$84,218	\$79,460	\$75,613
Average House Value	\$169,433	\$202,075	\$196,135

** Demographic data derived from 2020 ACS - US Census*