



VALUE INDUSTRIAL PARTNERS, LLC

Industrial Real Estate Investment, Brokerage and Management

477 W. Wrightwood Avenue, Elmhurst, Illinois 60126 TEL: 630-333-1900 FAX: 630-333-1910

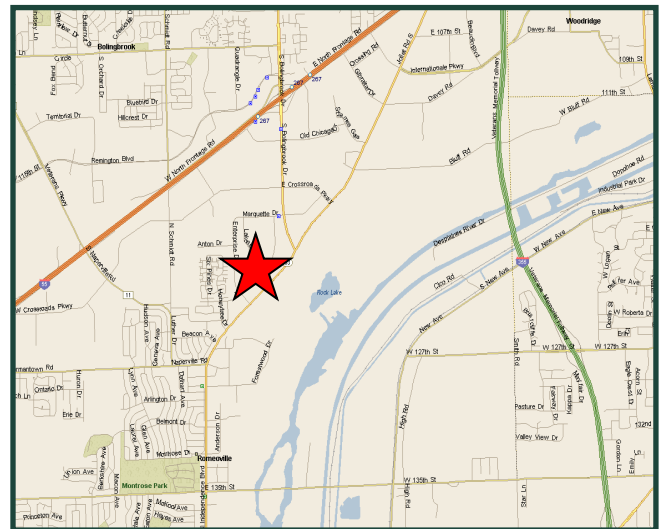


1201 Naperville Drive Romeoville, Illinois

FOR LEASE 11,200 SF

Building Specifications

Available Size	11,200 SF
Building Size:	36,092 SF
Office:	1,200 SF
Ceiling Height:	18'
Loading:	1 Exterior Dock 1 Drive-in Door
Power:	200 Amps, 120/208 Volts
Heat:	Gas
Real Estate Taxes	Included with Current Stop
Operating Expenses	Included with Current Stop



For Further Information, Please Contact:

Brian P. Gedvilas, Director of Leasing
bgedvilas@valueindustrialpartners.com

Brian M. Liston, Principal
bliston@valueindustrialpartners.com

TEL: 630-333-1900 FAX: 630-333-1910

Comments

- Professionally owned and managed
- Minutes to I-55 and I-355 via Rt. 53 or Joliet Rd.

ownership interest in this property.
in status, or withdrawal without notice.

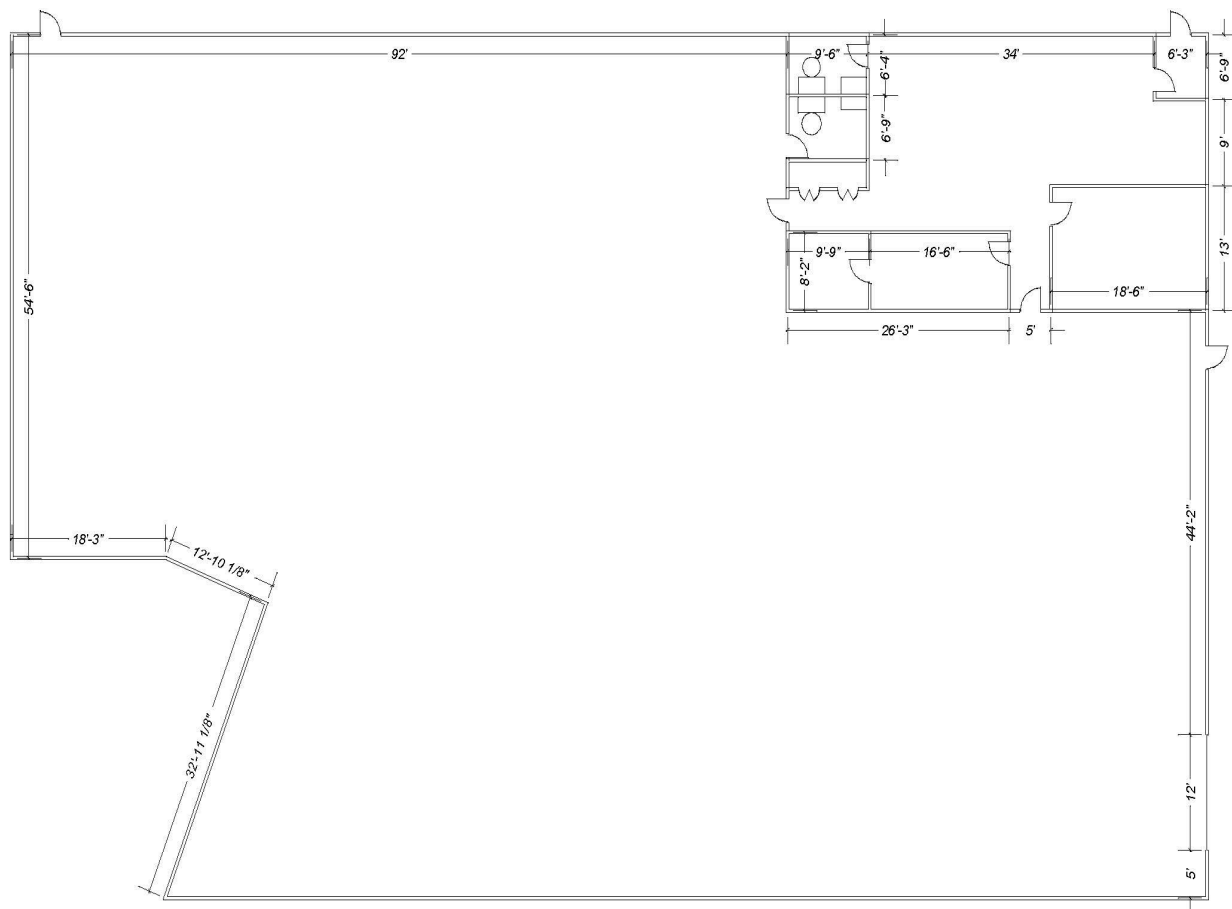


VALUE INDUSTRIAL PARTNERS, LLC

Industrial Real Estate Investment, Brokerage and Management

477 W. Wrightwood Avenue, Elmhurst, Illinois 60126 TEL: 630-333-1900 FAX: 630-333-1910

LAYOUT



FOR ILLUSTRATION PURPOSES ONLY. DIMENSIONS TO BE CONFIRMED.

Officers of the firm have an ownership interest in this property.
Submitted subject to error, change in status, or withdrawal without notice.