



**FOR LEASE**

# Parkview Place Building

101 East Broadway  
Eugene OR 97401

**\$1.00 PER SQUARE FOOT | FULLY SERVICED**

- Prime downtown location at Oak Street & Broadway
- 1,326 rentable square feet on the Garden Level
- \$1.00 per square foot per month, full service

**Evans  
Elder  
Brown &  
Seubert**

COMMERCIAL REAL ESTATE

## CONTACT

**Jeff Elder**

jeff@eebcre.com

**Ashley Elder**

ashley@eebcre.com

**(541) 345-4860**

Licensed in the State of Oregon.

# Garden Level Floor Plan

101 East Broadway  
Eugene OR 97401

Evans  
Elder  
Brown &  
Seubert

COMMERCIAL REAL ESTATE

## CONTACT

**Jeff  
Elder**

jeff@eebcre.com

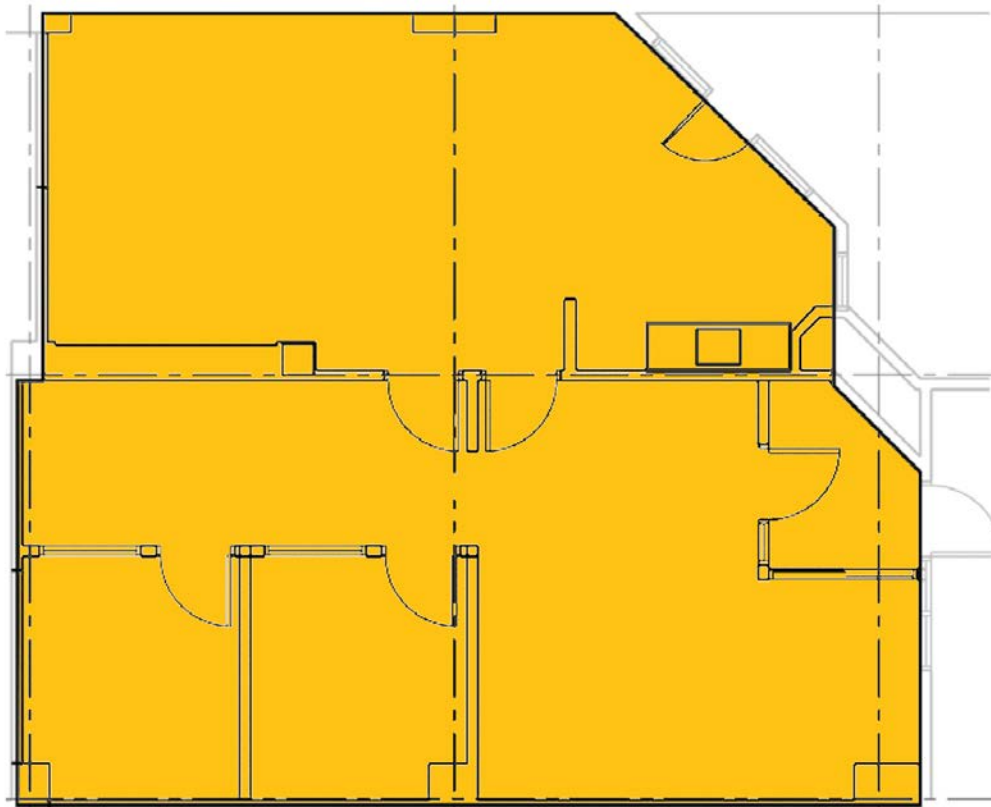
**Ashley  
Hope  
Elder**

ashley@eebcre.com

**(541) 345-4860**

101 East Broadway  
Suite #101  
Eugene, OR 97401

Licensed in the  
State of Oregon.



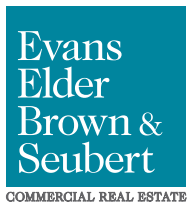
## Downtown Offices

**1,326 RENTABLE SQUARE FEET**

- Two private offices
- Large conference room
- Kitchenette

# Location

101 East Broadway  
Eugene OR 97401



## CONTACT

**Jeff Elder**  
jeff@eebcre.com

**(541) 345-4860**

**Ashley Hope Elder**  
ashley@eebcre.com

**(541) 345-4860**