

7849 Harrison Ave
Cincinnati, OH 45002



For Lease

Up to 7,650 SF with +/- 16.5 acres available



+/- 12.5 Acres

LEASED

2.5 Acres Available

Jeff Kroeger, CCIM, SIOR
Senior Vice President
+1 513 562 2215
jeffrey.kroeger@colliers.com

Chuck Ackerman, CCIM, SIOR
Senior Vice President
+1 513 562 2266
chuck.ackerman@colliers.com

Bill Keefer, SIOR
Senior Vice President
+1 513 562 2235
bill.keefers@colliers.com

Colliers | Greater Cincinnati
425 Walnut St, Suite 1200
Cincinnati, Ohio 45202
+1 513 562 2213

3-BAY MAINTENANCE FACILITY AVAILABLE (DRIVE-THRU CAPABILITY)

4,750 SF with +/- 3 Acres

Additional +/- 8
Acres Available



LEASED



Total SF	4,750 SF
Acreage	+/- 3 Acres Included Additional +/- 8 acres available at \$3,000/AC/MO
Loading	Four 14'x16' drive-in doors (Drive-thru capability)
Office	2 private offices
Availability	Immediately
Notes	<ul style="list-style-type: none">• Restroom• Automatic gate• Additional acreage available at \$3,000/AC/MO (See page 6)

+/- 8 ACRES AVAILABLE

+/- 8 Acres Available (Divisible)



\$3,000/AC/MO Modified Gross



Acreage

+/- 8 Acres available (divisible)

Notes

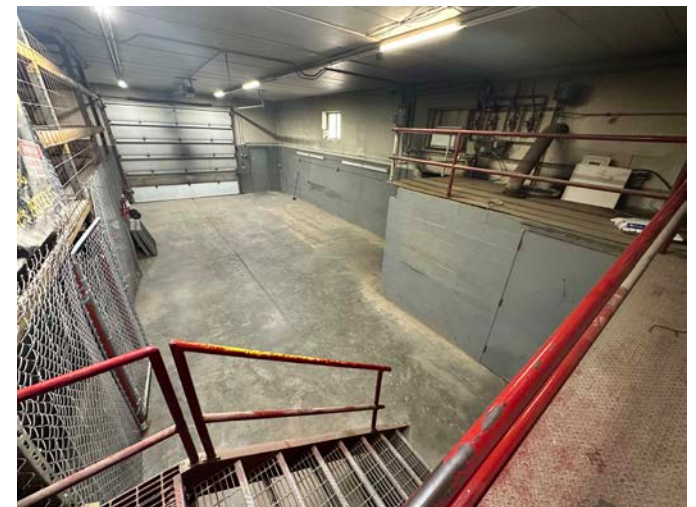
- Additional 2.5 acres available at \$3,000/AC/MO (see page 6)

TWO-STORY SCALE BUILDING AVAILABLE

4,500 SF with +/- 2.23 Acres



\$6,000/MO Modified Gross



Total SF	4,500 SF
Acreage	2.23 Acres Included Additional +/- 10.5 acres available at \$3,000/AC/MO
Loading	1 drive-in door
HVAC	Gas Heat
Note	Automatic gate
Availability	Immediately

SERVICE FACILITY



\$2,000/MO Modified Gross



Total SF	1,400 SF
Acreage	.5 Acres Included Additional +/- 10.5 acres available at \$3,000/AC/MO
Loading	1 drive-in door
Availability	Immediately
Note	Automatic gate

FRONT LOT



\$3,000/AC/MO Modified Gross



Acreage	2.5 Acres Available Additional +/- 8 acres available at \$3,000/AC/MO (see page 2)
Property	Fully fenced & lit
Note	Dolly pads installed

PROPERTY MAP



Maintenance Facility



+/- 8 Acres Available



+/- 8 Acres Available

Scale Building



Front Lot



2.5 Acres available