

INDUSTRIAL | FOR LEASE

35,700 SF on ±8.75 ACRES

115 ST. NICHOLAS AVE

SOUTH PLAINFIELD, NEW JERSEY



NAI James E. Hanson
COMMERCIAL REAL ESTATE SERVICES, WORLDWIDE

INSTITUTIONAL
SERVICES
GROUP

Christopher D. Todd, SIOR
Senior Managing Director
Institutional Services Group
201 488 5800 x117
ctodd@naihanson.com

Jordan W. Avanzato, SIOR
Senior Managing Director
Institutional Services Group
201 488 5800 x132
javanzato@naihanson.com

William Ericksen, SIOR, CCIM
Managing Director
Institutional Services Group
201 488 5800 x133
wericksen@naihanson.com

THE INFORMATION CONTAINED HEREIN HAS BEEN OBTAINED FROM SOURCES CONSIDERED TO BE RELIABLE, BUT NO GUARANTEE OF ITS ACCURACY IS MADE BY NAI JAMES E. HANSON.

PROPERTY OVERVIEW

115 ST. NICHOLAS AVE
SOUTH PLAINFIELD, NEW JERSEY

Highlights:

- Capital Improvements Underway:
Exterior/Interior Building Renovations
(lighting, paint, dock packages, roof replacements, paving improvements)
- Ingress/Egress on St. Nicholas Ave and/or Skyline Drive
- Abundant Parking & Outdoor Storage
- Ideal for Last Mile/Final Mile, 3PL, LTL, Fleet Storage & Maintenance, Warehousing
- M-3 Zoning

Building 1

- 20,000 SF Truck Terminal
- 34 Loading Docks (33 x 9' x 10',
1x 20' x 14') & 1 Drive-In Door
- 14' Clear
- 38.33' x 21.5' Column Spacing

Building 2

- 3,700 SF Maintenance Facility
- Three (3) 12' x 14' Grade Level Drive-In Doors
- 16' Clear

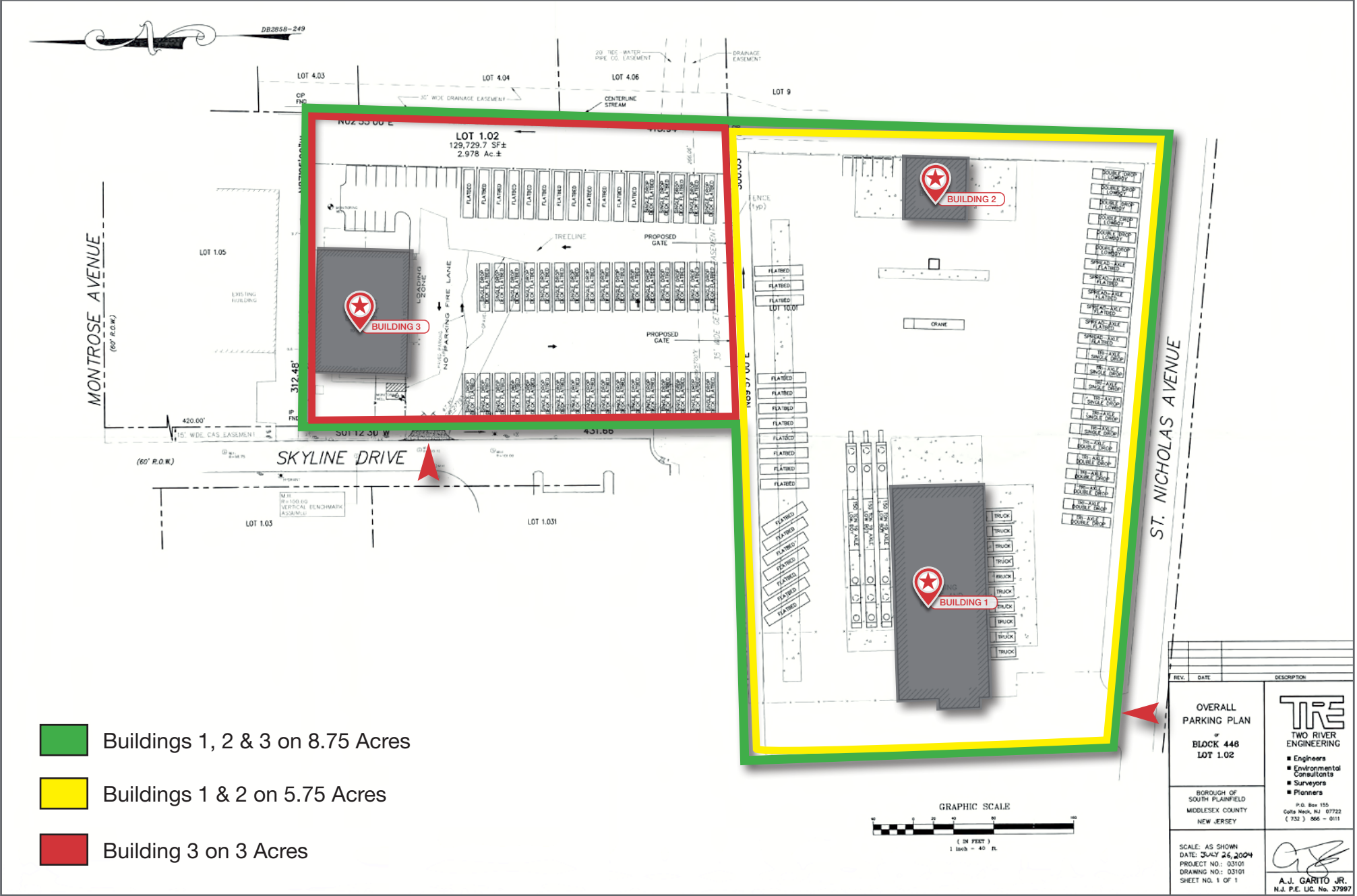
Building 3

- 12,000 SF Maintenance Facility
- Two (2) 25' x 14' drive-ins
- 14' Clear



POTENTIAL DIVISIONS

115 ST. NICHOLAS AVE
SOUTH PLAINFIELD, NEW JERSEY



LOCATION

115 ST. NICHOLAS AVE
SOUTH PLAINFIELD, NEW JERSEY

115 ST. NICHOLAS AVE

Proximity Highlights

- 1 Mile to Exits 4 & 5 on I-287
- 10 Miles to Exit 10 on the NJ Turnpike
- 15 Minutes to the Garden State Pkwy & Route 9

